

## 400 SERIES

### MOULDED WATER TRANSFER PUMPS CENTRIFUGAL PUMPS



#### FEATURES

- High grade corrosion resistant materials
- Award winning high flow impeller
- Wide model selection
- Inbuilt thermal overload
- Max. head - 26m
- Max. flow - 270lpm



#### APPLICATIONS

- Domestic, industrial or rural water transfer
- Typical uses include hose down, tank filling, general water transfer, hydroponics, sprinklers and garden watering
- Large range of applications due to wide range of models available

#### PUMP INFORMATION

Horizontal, single-stage, surface mounted centrifugal pump with closed impeller for pumping debris free water coupled to a cool running Totally Enclosed Fan Cooled 2 pole motor with thermal overload protection.

#### OPERATING CONDITIONS

Suitable for pumping clean non-aggressive liquids without solids or fibres in suspension.

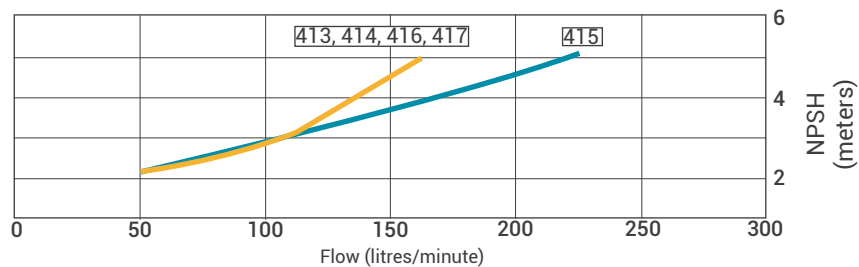
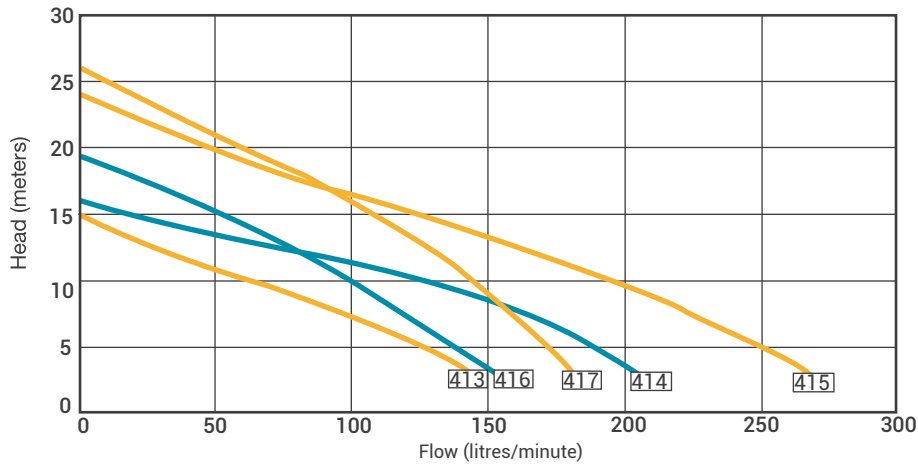
Fluid:	Water
Maximum water temperature:	70°C
Manimum water temperature:	1°C
Maximum ambient temperature:	55°C
Maximum working pressure:	410kPa

\* For liquids outside of this range please consult your local 43South representative for product suitability.

## 400 Series - Technical Data

### PERFORMANCE CURVE

### NPSHR



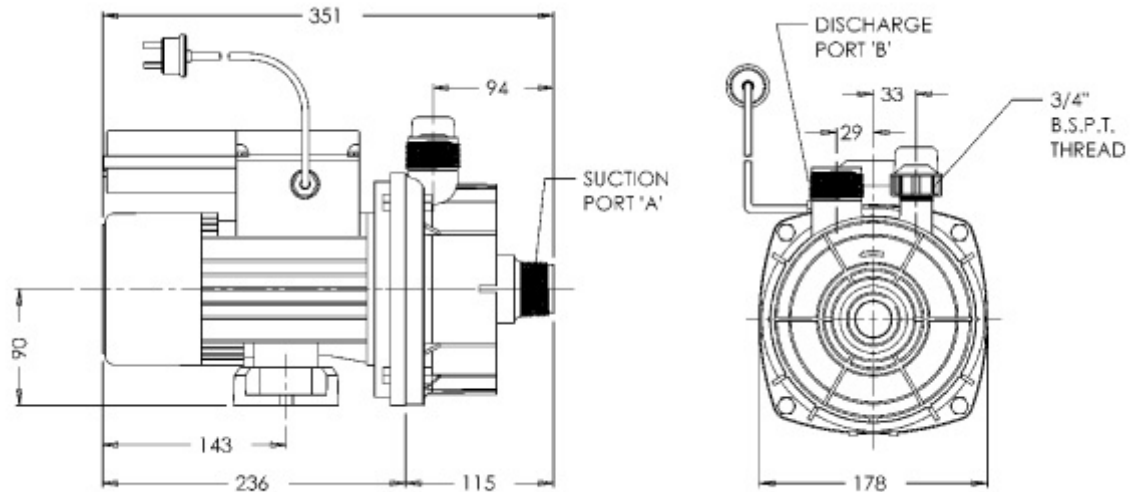
### ELECTRICAL DATA

Type	Type of current	Voltage ± 10%	Frequency Hz	Motor rating kW		RPM	Current ampere	Locked rotor current	Motor protection	Insulation class	IP rating
				P1	P2						
413	1-phase	230	50	0.4	0.375	2900	2.5 A	10 A	Auto	B	IP55
414	1-phase	230	50	0.55	0.375	2900	2.5 A	10 A	Auto	B	IP55
145	1-phase	230	50	0.75	0.7	2900	4.3 A	15 A	Auto	B	IP55
416	1-phase	230	50	0.55	0.39	2900	2.6 A	10 A	Auto	B	IP55
417	1-phase	230	50	0.75	0.67	2900	4.1 A	15 A	Auto	B	IP55

### PERFORMANCE

Type	P/No	Delivery head [m]	Capacity [litres per minute]					
			4	8	12	16	20	24
413	341300	Capacity [litres per minute]	133	90	41	-	-	-
414	341400		198	156	89	6	-	-
415	341500		257	217	173	108	51	-
416	341600		143	116	87	44	-	-
417	341700		176	158	132	102	61	18

## 400 Series- Technical Data



### DIMENSIONS

Type	Maximum L x W x H	Weight approx	Inlet	Pump outlet	Carton L x W x H	Packed weight
413	351 x 178 x 225 mm	7.3kg	1" BSP (male)	1" BSP (male)	375 x 190 x 275 mm	8.1kg
414	351 x 178 x 225 mm	8kg	1 1/4" BSP (male)	1 1/4" BSP (male)	375 x 190 x 275 mm	9.6kg
415	351 x 178 x 225 mm	9.7kg	1 1/4" BSP (male)	1 1/4" BSP (male)	375 x 190 x 275 mm	10.5kg
416	351 x 178 x 225 mm	8kg	1" BSP (male)	1" BSP (male)	375 x 190 x 275 mm	9.6kg
417	351 x 178 x 225 mm	9.6kg	1" BSP (male)	1" BSP (male)	375 x 190 x 275 mm	10.4kg

### PUMP CONSTRUCTION MATERIALS

Component	Material
Pump casing	20% Glass Filled ABS
Baffle	20% Glass Filled ABS
Priming cap	Polypropolene
Impeller	20% Glass Filled polycarbonate
Diffuser	Noryl
Shaft sleeve	Nylon
Seal flexible bellows	Nitrile
Seal stationary face	Ceramic
Seal rotating face	Carbon
Seal spring	304 Stainless Steel
Motor shaft	Mild Steel
O'Rings	Nitrile