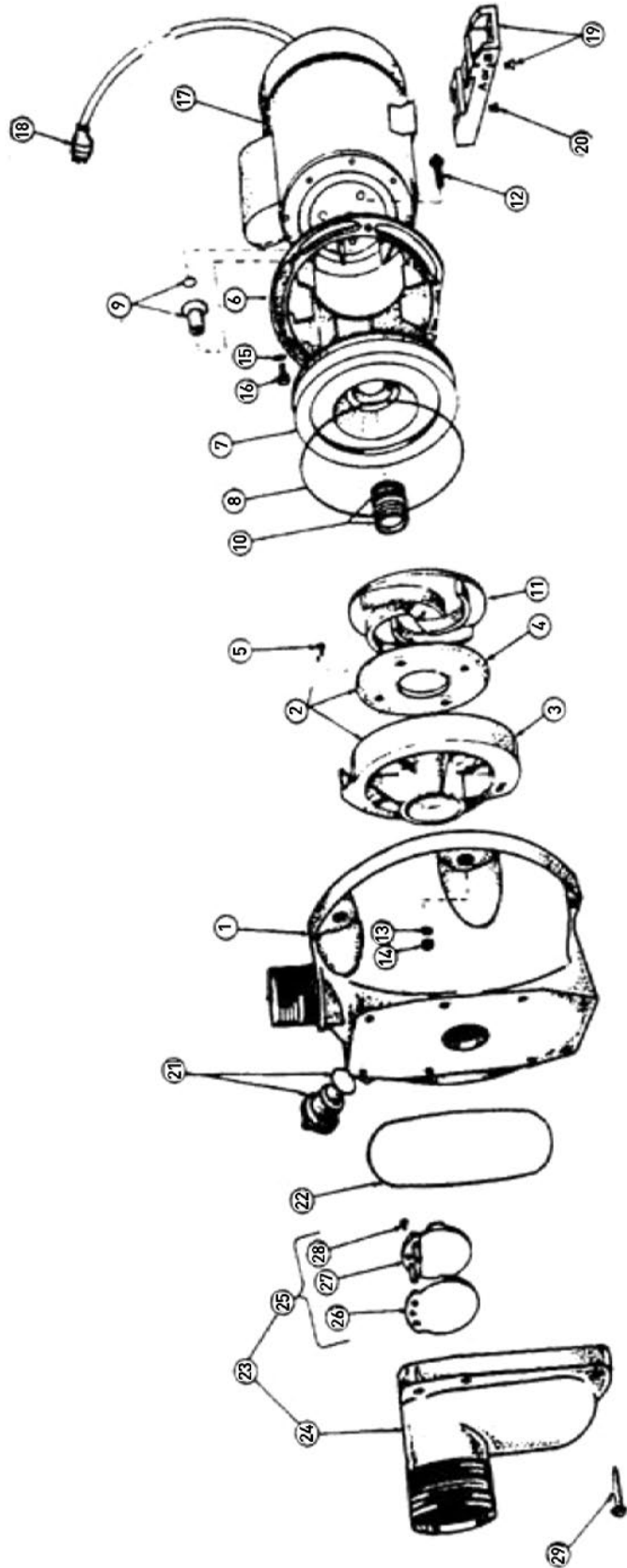


121 & 122 Ranges



Drawings are indicative only, product appearance may change slightly.

PARTS LIST TABLE

12 Range

MODEL PART NUMBER		121		122	
		312100		312200	
				312203	
REF NO.	DESCRIPTION	PART NO.		PART NO.	
1	CASING	301371	1PC	301371	1PC
2	DIFFUSER & WEARPLATE	-	1PC	800054	1PC
3	DIFFUSER	403471	1PC	401124	1PC
4	WEARPLATE	-	1PC	501720	1PC
5	SCREW WEARPLATE (PK 12)	-	4PC	800102K	4PC
6	YOKE	301180	1PC	301180	1PC
7	BAFFLE	410810	1PC	402301K	1PC
8	O'RING CASING	702184K	1PC	702184K	1PC
9	SHAFT SLEEVE KIT	801007K	1PC	801007K	1PC
10	SEAL KIT (INC. SEAL & 9)	800890K	1PC	800890K	1PC
	SEAL - MECHANICAL	-	1PC	-	1PC
	SEAL (PK 25)	800900	1PC	800900	1PC
11	IMPELLER - 1PH	403385	1PC	801229K	1PC
	IMPELLER - 3PH	-	1PC	801229k	1PC
12	COACH BOLT (PK 10)	800254	6PC	800254	6PC
13	WASHER (PK 20)	800151	6PC	800151	6PC
14	NUT (PK 12)	702025K	6PC	702025K	6PC
15	WASHER (PK 20)	800151	4PC	800151	4PC
16	SCREW (PK 10)	800097	4PC	800097	4PC
17	MOTOR - 1PH	800445	1PC	800445	1PC
	MOTOR - 3PH	-	1PC	800447	1PC
18	LEAD	608200K	1PC	608200K	1PC
21	PRIMING PLUG & O'RING	800017K	1PC	800017K	1PC
22	O'RING SUCTION	702187	1PC	702187	1PC
23	SUCTION FLANGE & CLACKER ASSY.	800255	1PC	800255	1PC
24	SUCTION FLANGE	-	1PC	-	1PC
25	CLASKER ASSY. (INC. 26 & 27)	800235	1PC	800235	1PC
26	CLACKER BOOT	-	1PC	-	1PC
27	CLACKER	-	1PC	-	1PC
28	SCREW CLACKER (PK 10)	800201	1PC	800201	1PC
29	SCREW FLANGE (PK 10)	800105	6PC	800105	6PC
NS	SHIM (PK 10)	800238	2PC	800238	2PC