



YOUR

MIA

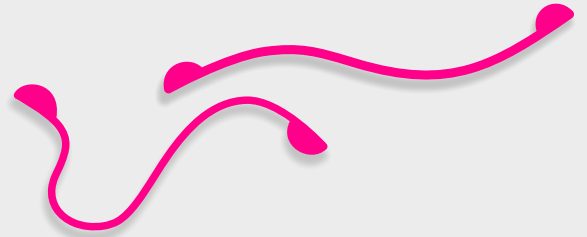
PRO LASHES

LASH LIFT SHIELDS
GUIDE



Mi!

*I am Indira, founder of
„MIA Pro Lashes“*



In 2023, we created special shields for lash lifting procedure. They gathered all my experience with complicated cases.



We live in Central Asia where tight growing-down lashes are not just complicated cases but there are 90% of clients.

It was difficult to get perfect lift result so as to do lash wrapping. The solution applying areas were driving me mad. However, in the end I developed the secret of perfect eyelash curls.



WHAT IS SILICONE?

28.0855	14
Si	
Silicon	
786.5	1.90



Silicone is an artificial material. By its elastic characteristics superior to rubber. It is used in producing household goods, children's toys and also in orthopedics and plastic surgery.



Silicone is a liquid in its initial and reminds jelly. We need to use catalyst in order to make it harden. The catalyst is a substance that helps to produce the reaction but it is not included into the final product.

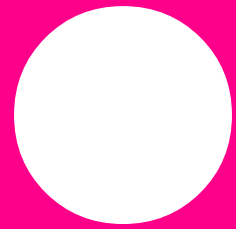
Cosmetology & food manufacturing silicone goods are made of platinum catalyst silicone. Silicone with tin catalyst (so called “tin catalyst”), is considered as quite dirty and toxic.



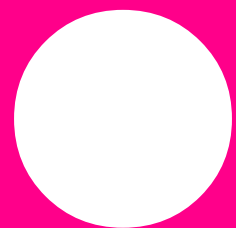
ALL MIA PRO LASHES products including lash-lifting shields are made from platinum catalyst silicone. Consequently, this fact differentiates our shields from shields of the Chinese market.



**DOUBT
WHAT KIND
OF SHIELDS
TO CHOOSE?**



**CHOOSE
A ROUND SHAPE.
IT`S THE BASIS!**



Clients come



hooded eyelid;

wide-row lashes;

down growing lashes;

**dawn-ward growing
outer corner of eyelashes.**

To leverage all the nuances we need a sufficient working surface area, and that is a circle. The working area of flat shields is not enough for complicated cases. See scheme bellow.

Working with flat shields

Down growing lashes

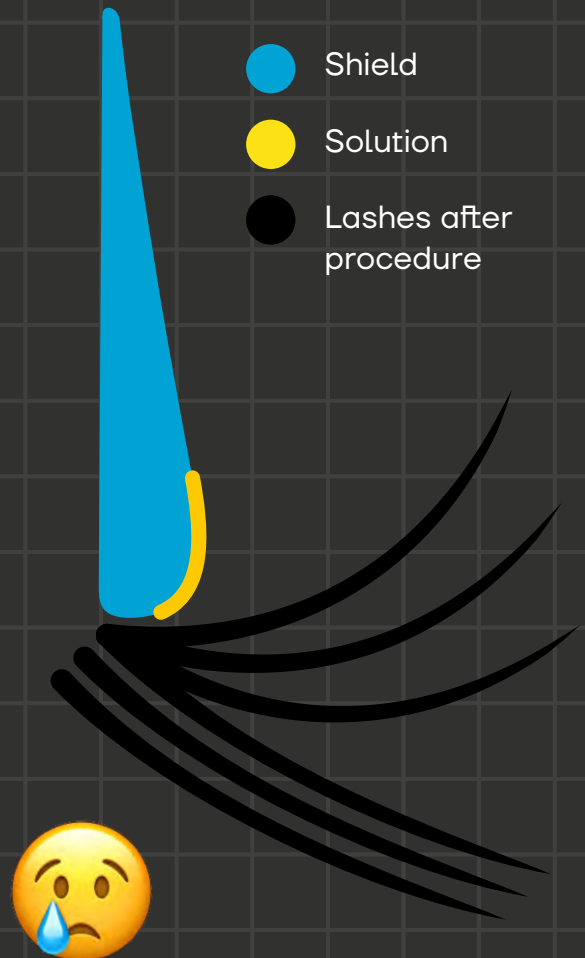
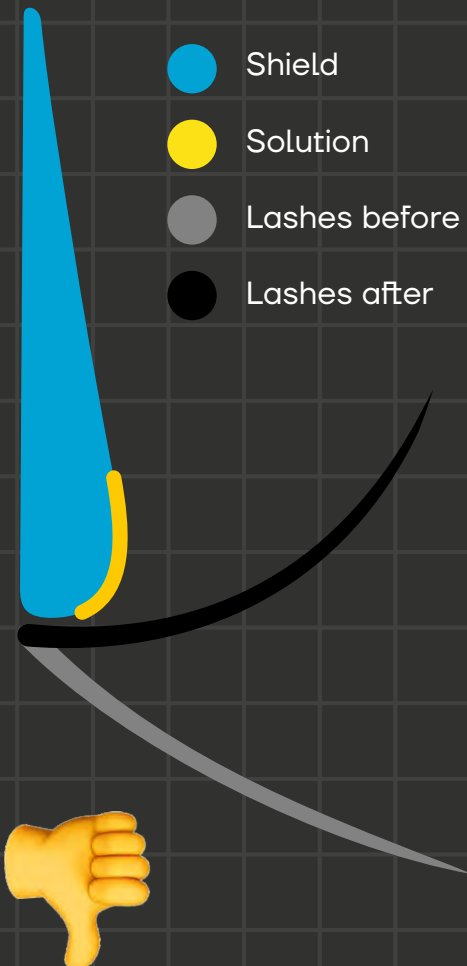


Wide-row lashes



- Shield
- Solution
- Lashes before
- Lashes after

- Shield
- Solution
- Lashes after procedure





SHIELDS BY MIA PRO LASHES

Petal – supporting part of the shield and protection of clients' eyelid

Smooth transition from apex to the petal

Apex – the highest point

Solution applying area

Classically regular circle



EXAMPLES OF OUR WORK

BEFORE



AFTER



PROCESS



CONVENTIONAL SCHEME OF APPLYING THE SOLUTION ON A SHIELD



Size of the shield:
M

Solution applying area:
before apex

EXAMPLES OF OUR WORK

BEFORE

AFTER



Size of the shield:

M



Solution applying area:

above apex

**CONVENTIONAL SCHEME
OF APPLYING THE SOLUTION
ON A SHIELD BY
MIA Pro Lashes**



ADVANTAGES OF MIA Pro Lashes LASH LIFT SHIELDS

Special geometry of the shields (see the diagram on the previous page) simplifies the process of lash wrapping on the shield.

The proper geometry in the inner and outer corners. Other shields are flat at the bridge of the nose or symmetrical narrow at the both sides.

The shape of the shields is proportional from size to size (not flat S or convex L in comparison with most of the shapes on the market).

Very soft outer corners provides maximum comfort to the client (no pressure, no discomfort).



WORK EXAMPLES

made by [@adelya_lami](#)

BEFORE



PROCESS



AFTER



CONVENTIONAL SCHEME OF APPLYING THE SOLUTION ON A SHIELD



Size of the shield:
S



Solution applying area:
before apex

ADVANTAGES OF MIA Pro Lashes LASH LIFT SHIELDS

**Suit for curls
and for spectacular
lifting.**

**Gently apply
without glue
even on complex
(Asian or age-related)
eyelid.**

**Made from
hypoallergenic
silicone.**

**Can be interchanged
left to right.**

MIA
PRO LASHES



WORK EXAMPLES

BEFORE

AFTER

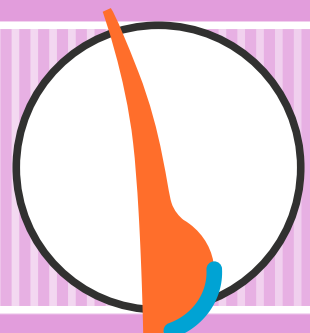


Size of the shield:
SM



Solution applying area:
1 mm above apex

**CONVENTIONAL SCHEME
OF APPLYING THE SOLUTION
ON A SHIELD BY
MIA Pro Lashes**



WORK EXAMPLES

BEFORE

AFTER



Size of the shield:

S



Solution applying area:

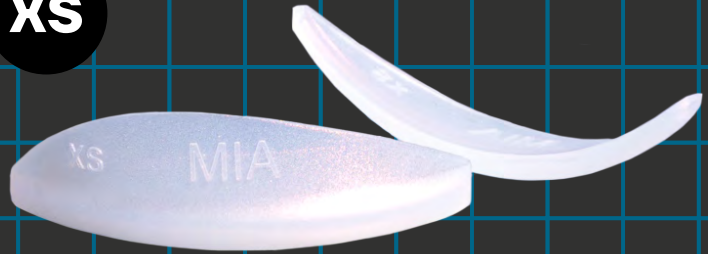
before apex

CONVENTIONAL SCHEME
OF APPLYING THE SOLUTION
ON A SHIELD BY
MIA Pro Lashes

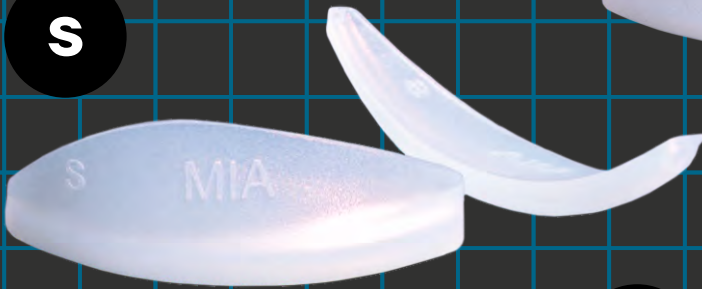


SIZE RANGE

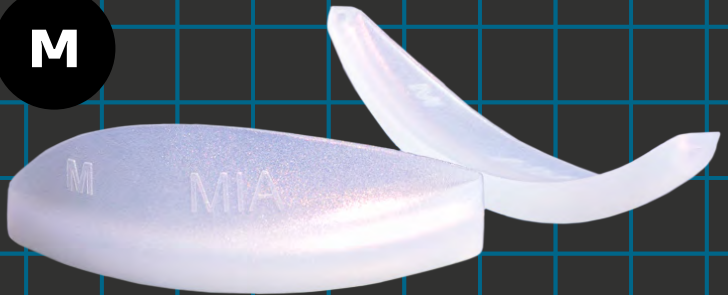
XS



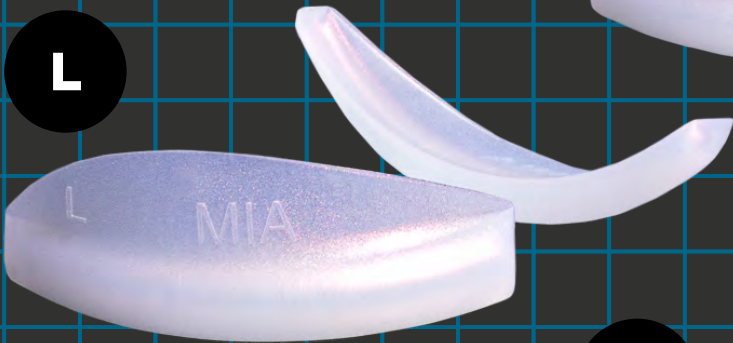
S



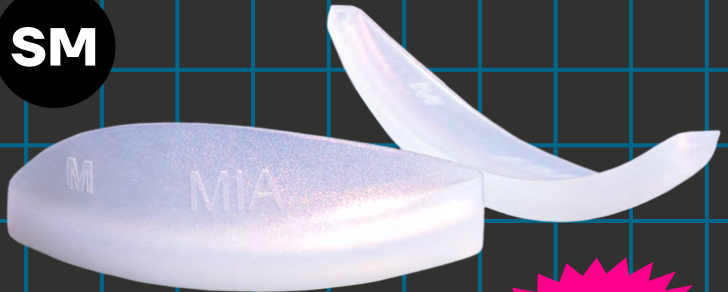
M



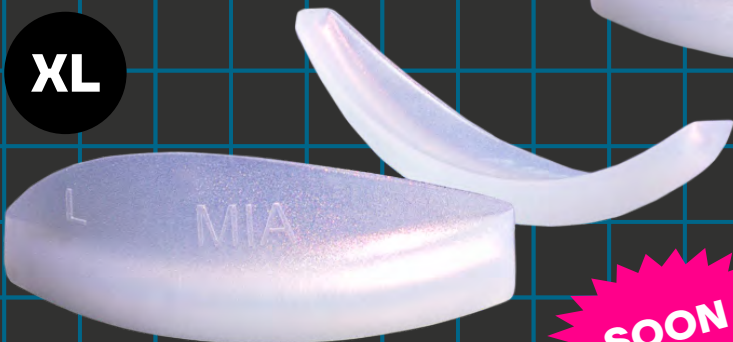
L



SM



XL



SOON

SOON

WORK EXAMPLES

BEFORE

AFTER



Size of the shield:

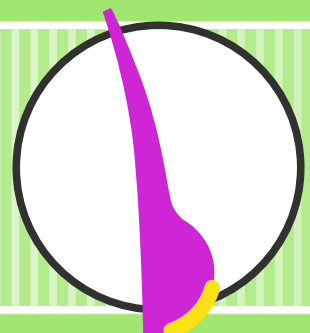
M



Solution applying area:

before apex

**CONVENTIONAL SCHEME
OF APPLYING THE SOLUTION
ON A SHIELD BY
MIA Pro Lashes**



WORK EXAMPLES

BEFORE

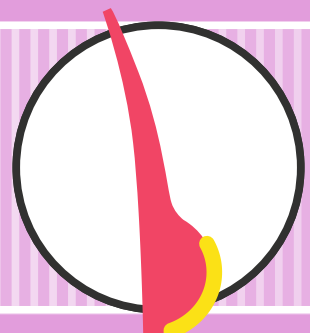
AFTER



Size of the shield:
M

Solution applying area:
2mm above apex

**CONVENTIONAL SCHEME
OF APPLYING THE SOLUTION
ON A SHIELD BY
MIA Pro Lashes**





CHOOSE YOUR COLOR!



MIA Pro Lashes shield sets are available in four colors: fuchsia, orange, black and pearl. The geometry of the shields is the same the difference is only in color.





CAN BE BOUGHT SEPARATELY



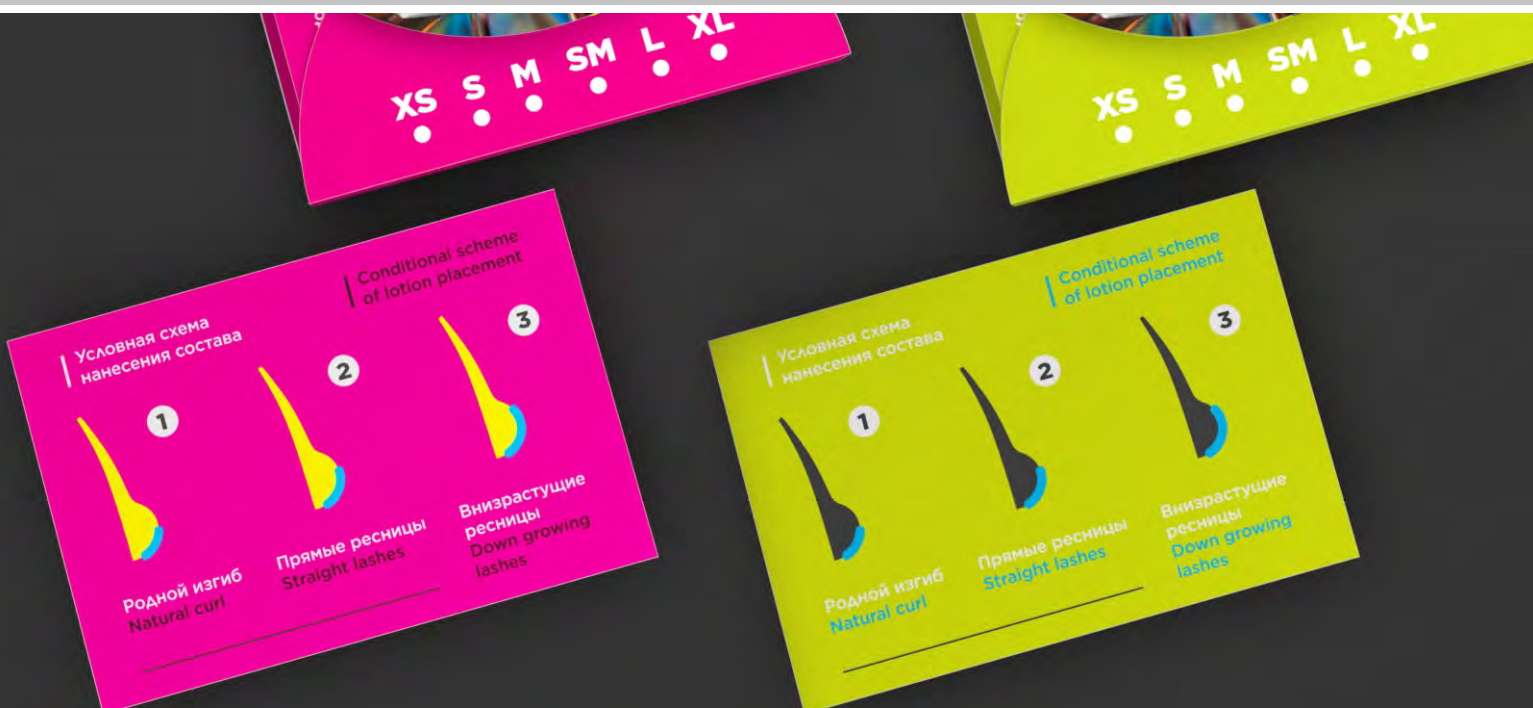
You can also get one pair of shields of any size in the following colors: fuchsia, orange, lime (not launched yet) or pearl.





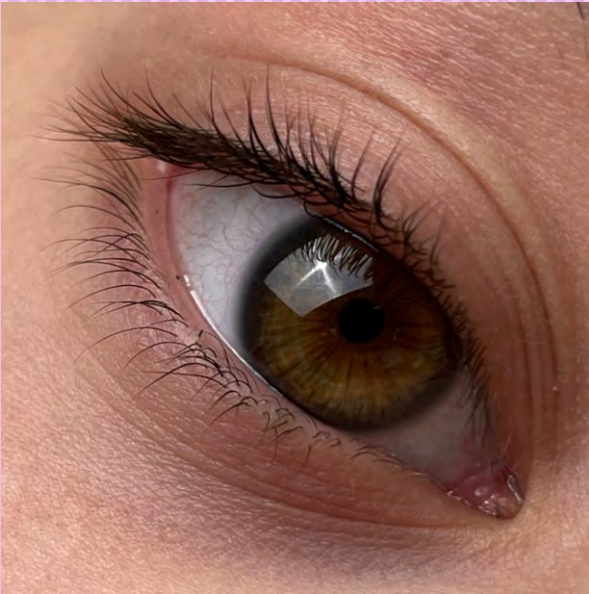
SOLUTION APPLYING ALGORITHMS ARE ALWAYS AT HAND

To make your work more comfortable and secure, we have placed helpful tips for zones of solution application to different types of lashes on the packaging.



WORK EXAMPLES

BEFORE



AFTER



PROCESS



CONVENTIONAL SCHEME OF APPLYING THE SOLUTION ON A SHIELD



Size of the shield:
M

Solution applying area:
1mm above apex



We have recently
released
LAMISTRIP.
This is a strip
for the perfect
contour of solutions.

MIA
PRO LASHES



LAMISTRIP –

**is for an ideal
smooth solution line
and awesome content!**

STAINING OF THE SHIELDS

Staining the silicone shields is an inevitable process that accompanies the procedure. Don't worry about it, since silicone shields, first of all are consumables. But some professionals stain silicone shields less often, than the other lamimakers. Why it happens this way? It's all about the work technique.

Here we discover the secrets of keeping the original color of the silicone shields last longer

1

During the tinting process we use 0,9 – 1,8% developer. Not higher!

2

We dilute the paint for 2-3 minutes before applying it to the eyelashes and ideally, we do it before removing the second solution.

3

Serum "Couture" from by Dottore lami (former Amica Lashes), that is added to the paint, really reduces the intensity of shields coloring (you only need one small drop of it).

4

After removing the silicone shields, wipe them down and put them in hot soapy water immediately.

5

Soaking the silicone shields in hydrogen peroxide or using dry heat makes the ingrained pigment lighter.

WORK EXAMPLES

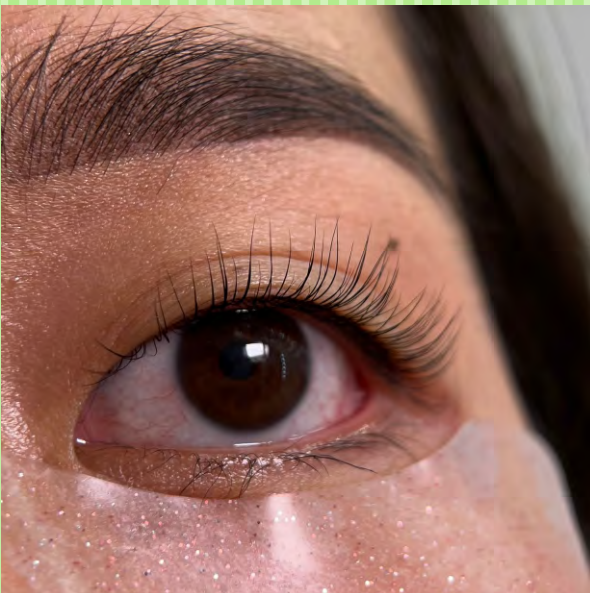
BEFORE



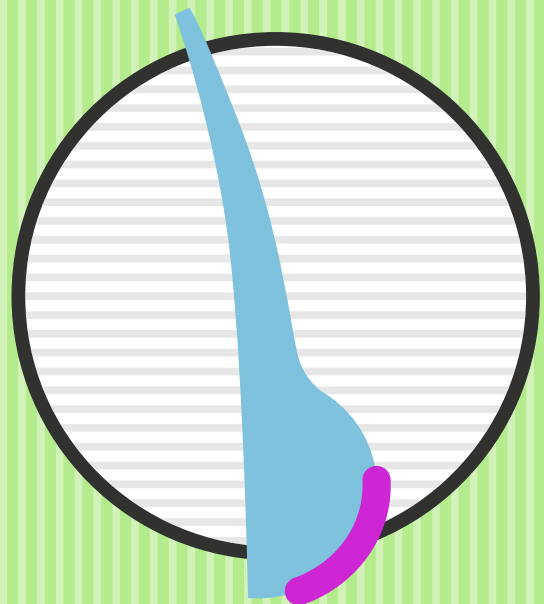
PROCESS



AFTER



CONVENTIONAL SCHEME OF APPLYING THE SOLUTION ON A SHIELD



Size of the shield:
XL



Solution applying area:
1mm above apex

DISINFECTION

MIA Pro Lashes pads can be sterilized in dry heat under 180°C during 1 hour, or soaked for 30 minutes in a solution of chlorhexidine or hydrogen peroxide, or in solutions specially prepared for disinfecting silicone (for example, InLei, Novel).



COMPENSATION

Compensation is the technique of holding or returning the eyelashes to the pad during the procedure. For a beautiful one-plane curve, the lashes must constantly remain on the silicone shield. If the eyelashes pop off during the second solution, sagging may form and there will be no uniform lifting effect.



After testing different geometric shapes, lengths and thicknesses, the MIA Pro Lashes shape was developed with an optimal fitting to eyelashes.



The internal and external corners of the compensators were worked out. A special tongue was invented for easy removal. Shapes are highlighted, so you won't get confused about right and left.

REVIEWS

14:14



I just want to thank you from the bottom of my heart

These are my favorites!

The most amazing shields in my life

I recommend them to all my students and clients.
They have already ordered.

I bought them about 3-4 mounts ago

Now, I don't work with other shields,
although I have a lot of expensive and cheap shields

O hug you tightly and thank you!!! 📄📄📄



Saya, lamimaker

REVIEWS

14:14



It is easy to place eyelashes on the shields. They are soft and have a beautiful color.

The silicone is very pleasant so the eyelashes stick themselves. In the area of the eyelashes tips, there is not a right angle, but a smooth descent. Due to this there no creases.



Kamila, lamimaker

REVIEWS

14:14



High-quality beautiful shields from packaging to small details. There is no any necessity to glue the shields to the eyelid using glue as they fit tightly. They are beautiful, nice curl, no sharp transitions and corners. Working with these shields is a pleasure.



Arailym, lamimaker

REVIEWS

14:14



They are incomparable, from the packaging to the shields themselves, after these you won't go back to others. It's such a delight. And the packaging, of course, is not important at all, but what a pleasure it is to unwrap it. They hold up well, very comfortable.



Hanna, lamimaker

REVIEWS

14:14



The pearl version the shields just blows your mind 🥰 In fact, they become colored and the alluring color makes you photograph 📷 them in different versions 🔥 🔥 🔥 Strongly recommend you to buy!

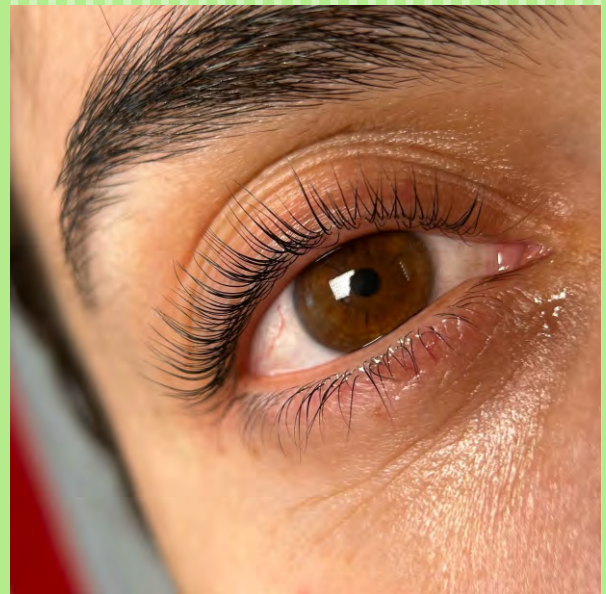


@lami.era, lamimaker

WORK EXAMPLES

BEFORE

AFTER

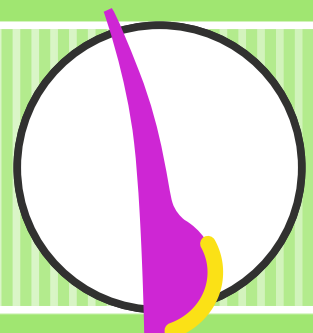


Size of the shield:
M



Solution applying area:
2mm above apex

CONVENTIONAL SCHEME
OF APPLYING THE SOLUTION
ON A SHIELD BY
MIA Pro Lashes



WORK EXAMPLES

BEFORE

AFTER



Size of the shield:

M



Solution applying area:

before apex

**CONVENTIONAL SCHEME
OF APPLYING THE SOLUTION
ON A SHIELD BY
MIA Pro Lashes**



*Do you want
to learn how to work
with complicated
eyelashes?*

*Come to the
online course
and get 10 % discount.*

PROMO CODE:
MIA10



MIA

PRO LASHES



[mia.prolashes](#)
[mia.lamishop](#)



[miaprolashes.com](#)



miaprolashes@gmail.com



[Kaspi.kz](#)



[OZON](#)

*Create
amazing curls!*

