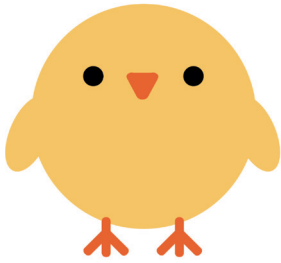
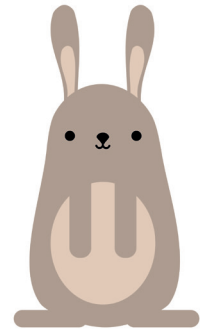


Easter Scavenger Hunt

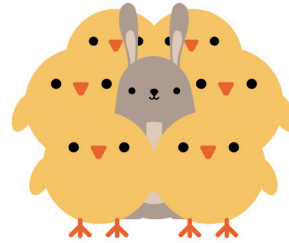
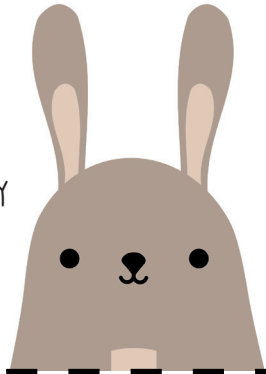


TO START YOUR
SEARCH, HERE'S
YOUR FIRST CLUE:
GO AND LOOK
INSIDE A
SHOE

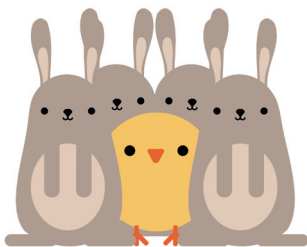
WHAT GOES BRRRUM
AND TRAVELS FAR?
YOUR NEXT CLUE IS
IN THE?



YOU'RE DOING
GREAT. DO YOU
WANT MORE?
GO AND CHECK BY
THE BACK DOOR

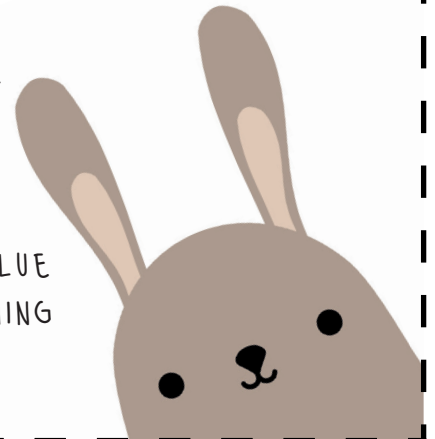


QUICKLY NOW,
YOU'LL HAVE TO
RUSH;
HEAD TO
WHERE YOU
KEEP YOUR
TOOTHBRUSH

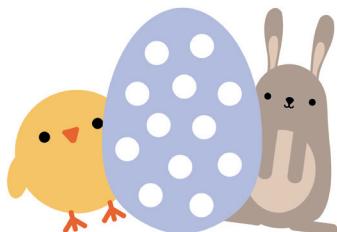


GETTING
CLOSE, YOU'LL
HAVE TO PEEP,
SOMEWHERE
WHERE YOU GO
TO SLEEP

LISTEN WELL
TO WHAT
YOU'RE
TOLD,
THE NEXT CLUE
IS IN SOMETHING
COLD



NEARLY
THERE YOU'LL
HAVE TO
THINK, THE
NEXT CLUE
IS BY THE
KITCHEN...?



YOUR VERY LAST
CLUE, YOU'RE
ALMOST A
WINNER. WHERE
DO YOU SIT
WHEN IT'S TIME
FOR DINNER?

