

Operation Guide

TOKUYAMA REBASE II

1 Removal of the dentures surface



2 Application of **ADHESIVE** and dry

Note: Use primer to Metal surface

Precious Metal

● **METALTITE**※

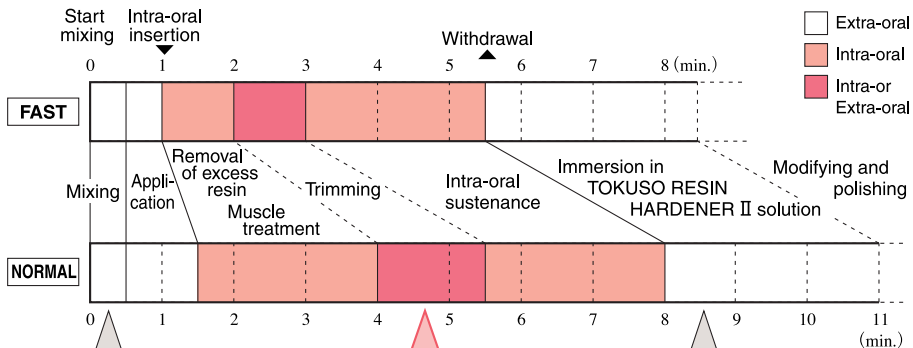
Non Precious Metal

● **TOKUSO REBASE MR BOND**※

※ Sold separately

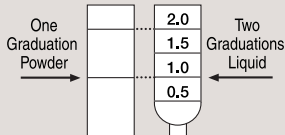
3 From mixing to polishing (Standard treatment time)

*Treatment time varies according to room temperature and powder-liquid ratio.



Standard Powder to Liquid Mixing Ratio

One Graduation Powder
Two Graduations Liquid



Partial denture and undercut

If the denture is a partial denture or the patient has an undercut, residual root, etc, remove the denture from the mouth and trim it extra-orally prior to final curing. Otherwise the denture may not be removed from the mouth.

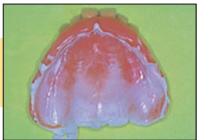
How to use TOKUSO RESIN HARDENER II

Dissolve 1 scoop of TOKUSO RESIN HARDENER II per 200mL of water (40-60°C (104-140°F)). Immerse the relined denture into the solution for more than 3 minutes.

Direction for use



1) Checking the occlusion



2) Checking the adaptation



3) Removal of the denture surface



4) Application of
ADHESIVE



5) Measuring -> Mixing ->
Application of the resin

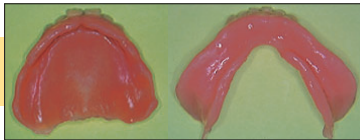


6) Insertion of the Denture ->
Removal of excess resin



7) Muscle treatment

(If there are same undercuts, remove the denture from patient's mouth for trimming after muscle treatment.)



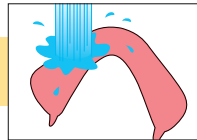
8) Intra-oral sustenance -> Withdrawal



9) Preparation of
RESIN HARDENER II
solution



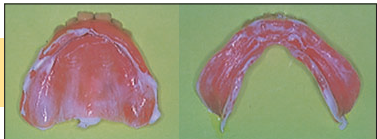
10) Immersion in
RESIN HARDENER II solution
(for more than 3minutes)



11) Rinsing and drying



12) Modifying and polishing



13) Checking the adaptation



14) Occlusal adjustments

Completion