

YAMAHACHI New Hard Acrylic Resin Teeth have arrived!!!



# CROWN NS

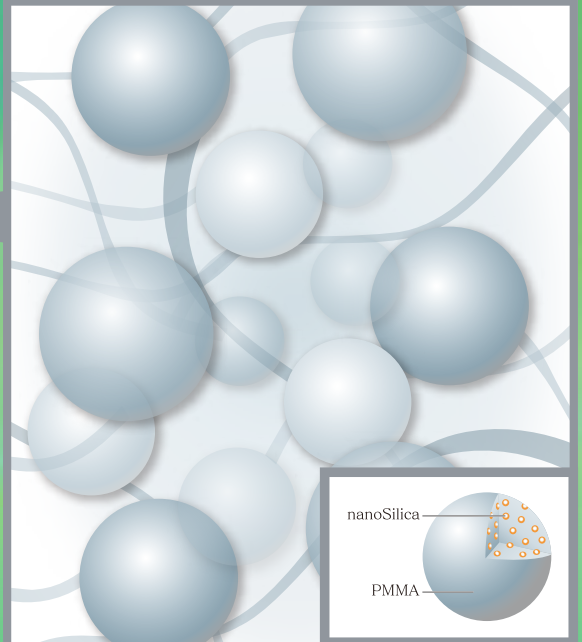
ANTERIOR

# EFUCERA NS

POSTERIOR

**Introducing!**

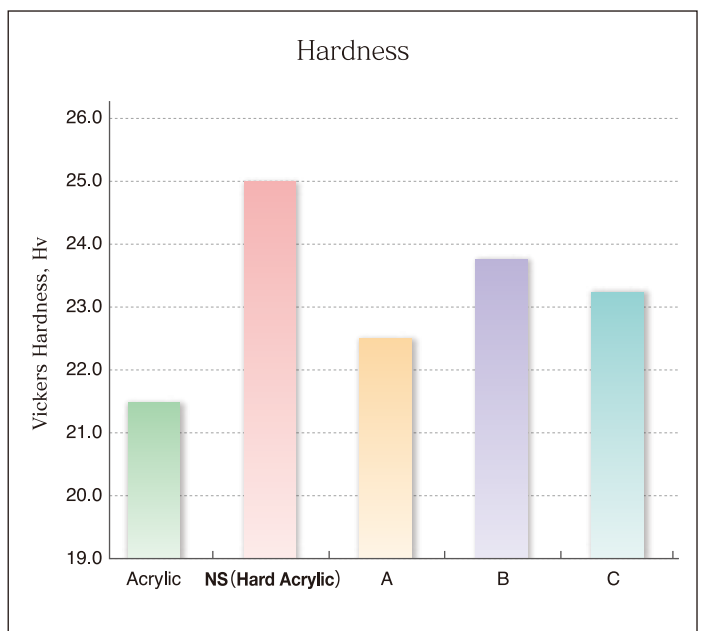
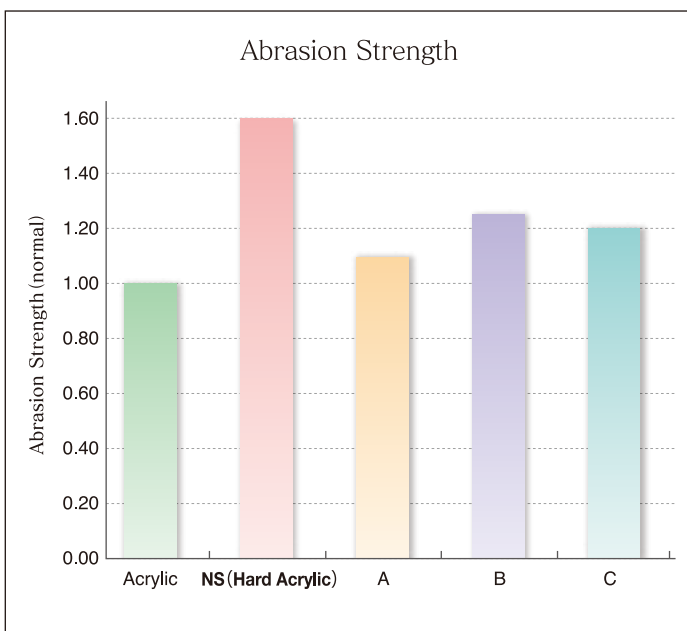
Hard Acrylic nanoSilica-Reinforced Resin Teeth



In the NS-material, unique nanoSilica-reinforced PMMA are integrated into the polymer network that resulted to high quality mechanical properties of the tooth.

### Features:

- Three-Layer Hard Acrylic Resin Teeth
- Superior Hardness and Abrasion Resistance
- High Bonding Strength to Denture Base Resin
- Easy Teeth Arrangement



A, B and C: Other brands's hard acrylic resin teeth

Packing	CROWN NS ANTERIOR : 6pcs/set,16sets/box				
	EFUCERA NS POSTERIOR : 8pcs/set,12sets/box				
Shade	A1	A2	A3	A3.5	A4
	B1	B2	B3	B4	
	C1	C2	C3	C4	
	D2	D3	D4	W0.5*	

\*All, except W0.5, are VITA shades.

Manufactured by:



**YAMAHACHI DENTAL MFG. CO.**

54-1.Ochigara, Nishiura-cho, Gamagori-City, Aichi Pref. Japan

Tel : (+81) 533-57-7121

Fax : (+81) 533-57-1764

E-mail: [box@yamahachi-dental.co.jp](mailto:box@yamahachi-dental.co.jp)

Web: [www.yamahachi-dental.co.jp](http://www.yamahachi-dental.co.jp)





**CROWN NS**  
ANTERIOR

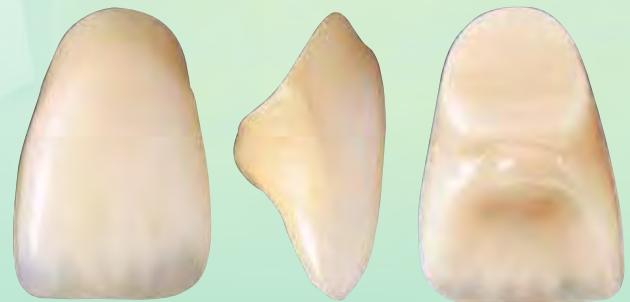
**EFUCERA NS**  
POSTERIOR

Hard Acrylic nanoSilica-Reinforced Resin Teeth

New **YAMAHACHI Hard Acrylic Teeth** have arrived: **CROWN NS ANTERIOR** and **EFUCERA NS POSTERIOR**. With nanoSilica-reinforced in the polymer network, equipped with special production process, has paved the way to achieve **NS** of hardness  $Hv = 25$ . Compared with conventional acrylic teeth, abrasion strength is increased by as much as 60%! **NS** is a three-layer, 3D-digital reproduction of natural teeth. It features solid moulds with supplementary labio-lingual width to render space clearance provided for easy adjusting and emphasized tubercle protrusion for strong locking on the lingual gum.

### CROWN NS ANTERIOR

*Beauty of natural teeth is excellently manifested.* The three-layer acrylic structure resembles the configuration of dentin and enamel, while organic beauty is visualized by its realistic dentin mamelon effect. *Sensation of natural teeth is faithfully reproduced.* Lingual and labial surfaces of natural teeth are imitated to preserve the characteristic feeling of tongue and constructively adopt the intrinsic outline of the mouth, respectively. The lingual tubercle is artistically innovated, while a thick incisal edge is developed for efficient occlusal equilibration.



### EFUCERA NS POSTERIOR

*Inherent capability of natural teeth is efficiently utilized.* The 20° cusp angle of semi-anatomical posterior configuration allows smooth mandibular movement and maintains denture stability. The occlusal surface is made smaller and this is proven to achieve more effective mastication.



Being distributed by:

Manufactured by:



**YAMAHACHI DENTAL MFG., CO.**

54-1 Ochigara, Nishitara-cho, Gamagori-City, Aichi Pref., Japan

Tel: (+81) 533-57-7121

Fax: (+81) 533-57-1764

E-mail: [box@yamahachi-dental.co.jp](mailto:box@yamahachi-dental.co.jp)

Web: [www.yamahachi-dental.co.jp](http://www.yamahachi-dental.co.jp)

