

Holland™ ThermoSens Extension



Holland Dental



Extension



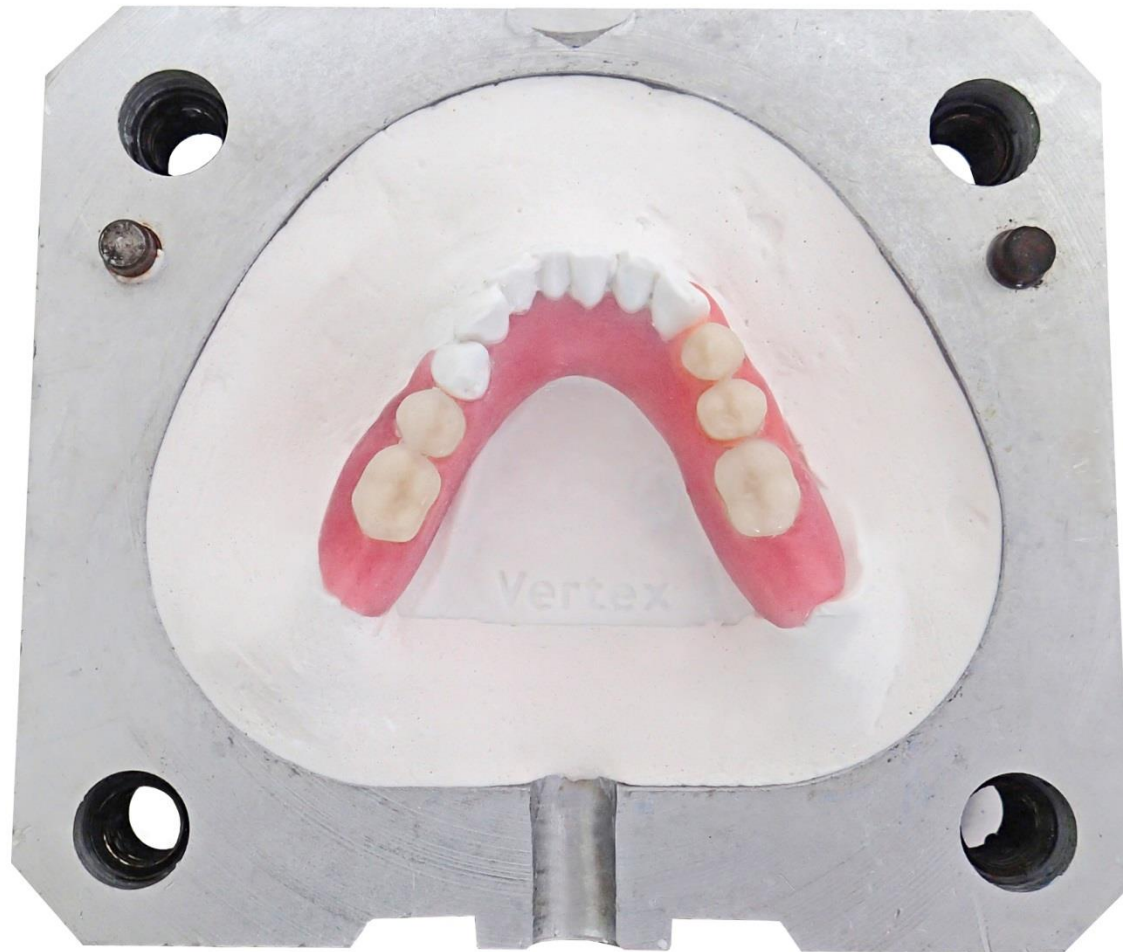
Build up the extension in wax



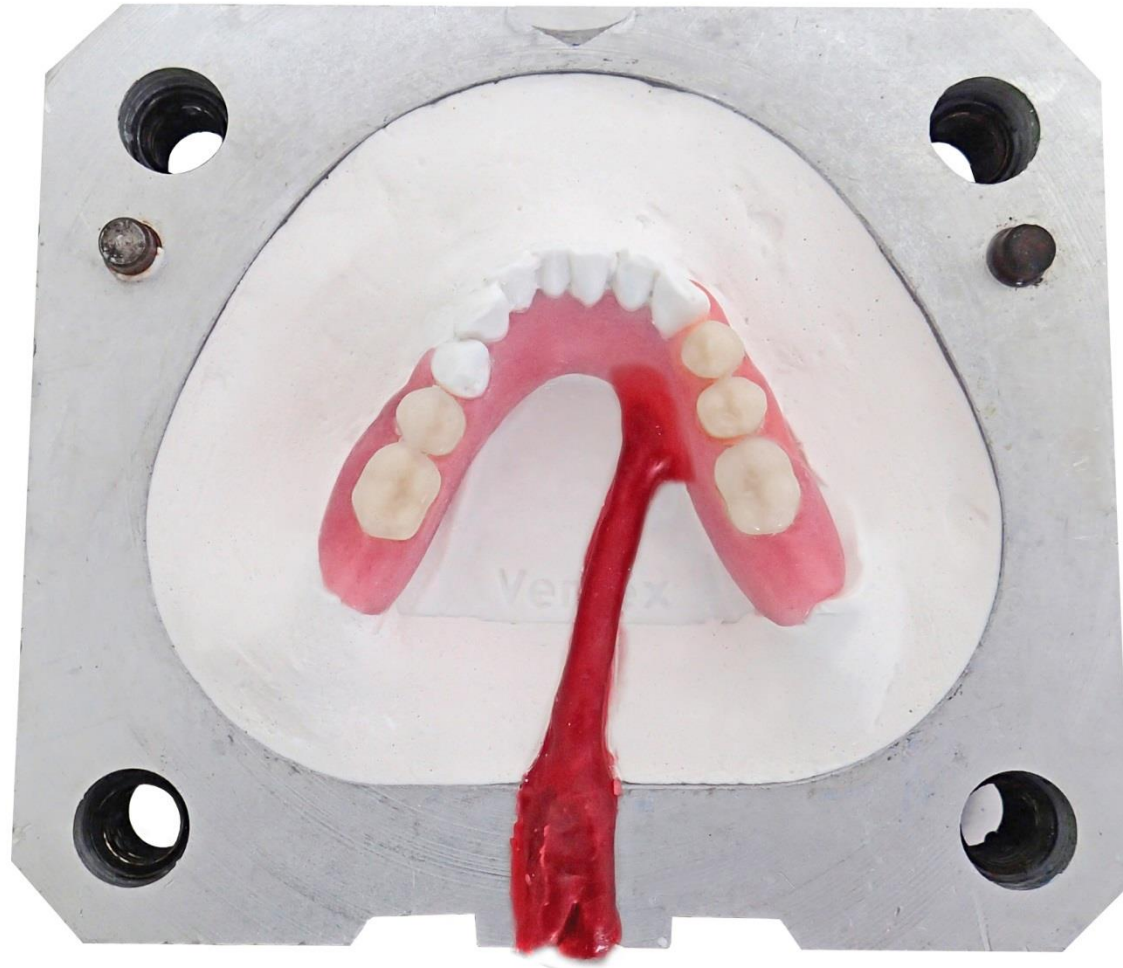
Spray silicone and separate model with divosep



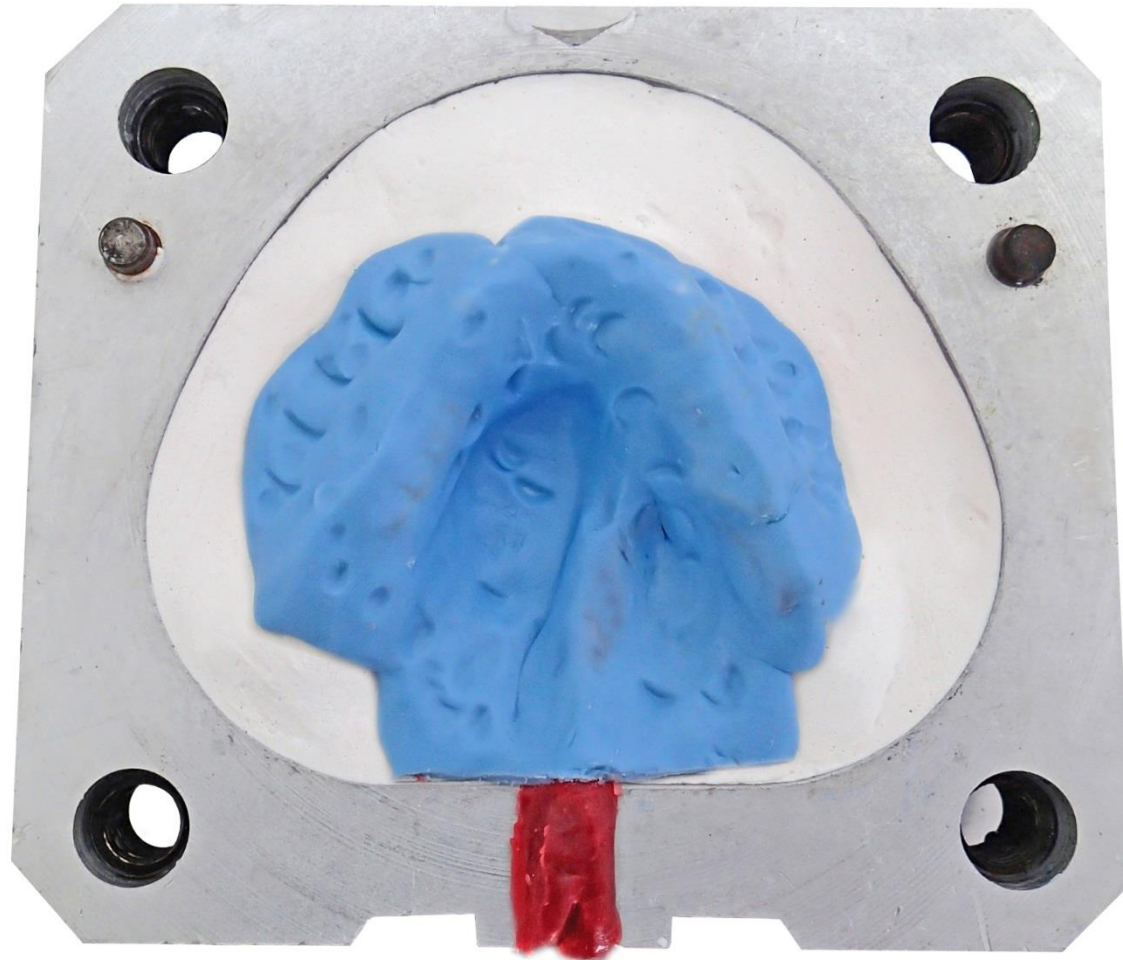
Place the model in the Flask



Place sprue where the extension is needed



Cover the model with a thin layer of putty



Separate the plaster with Divosep



Lock the flask and cover the model in plaster



Let the plaster dry and place flask in hot water

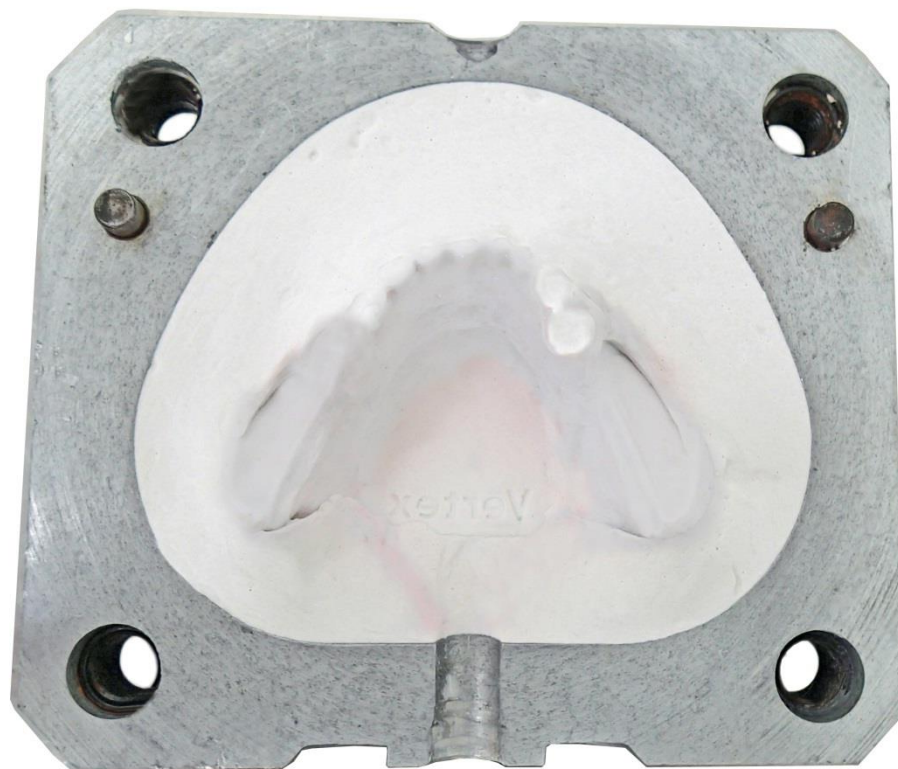
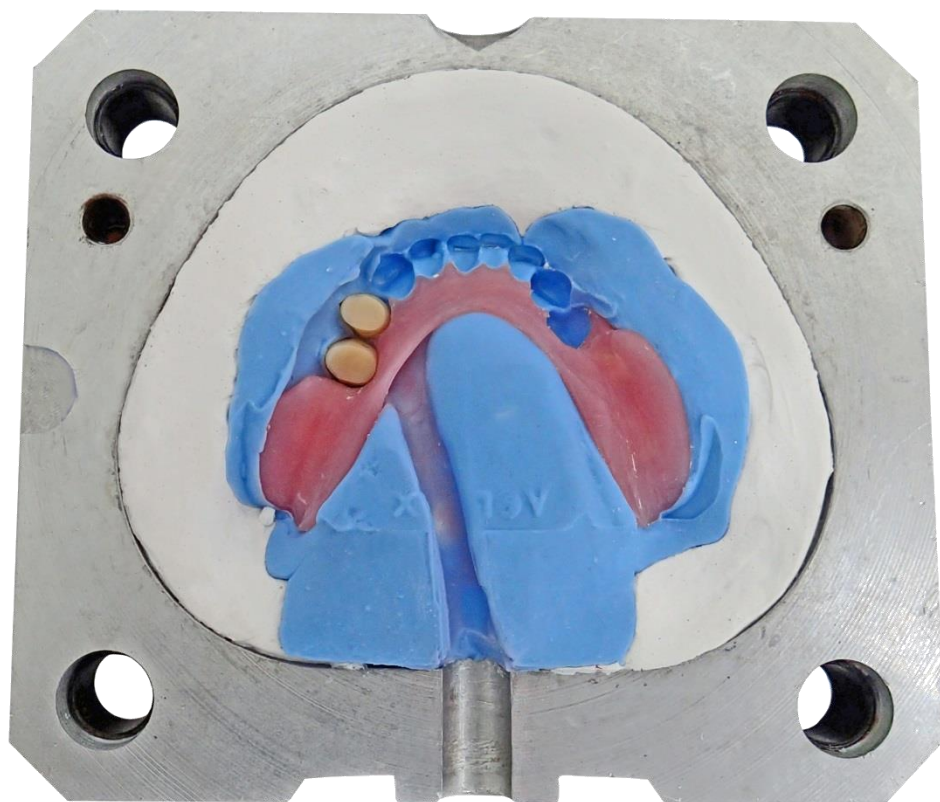
69 degrees for 10 min



Open Flask and remove the remaining wax



Result after removing the wax

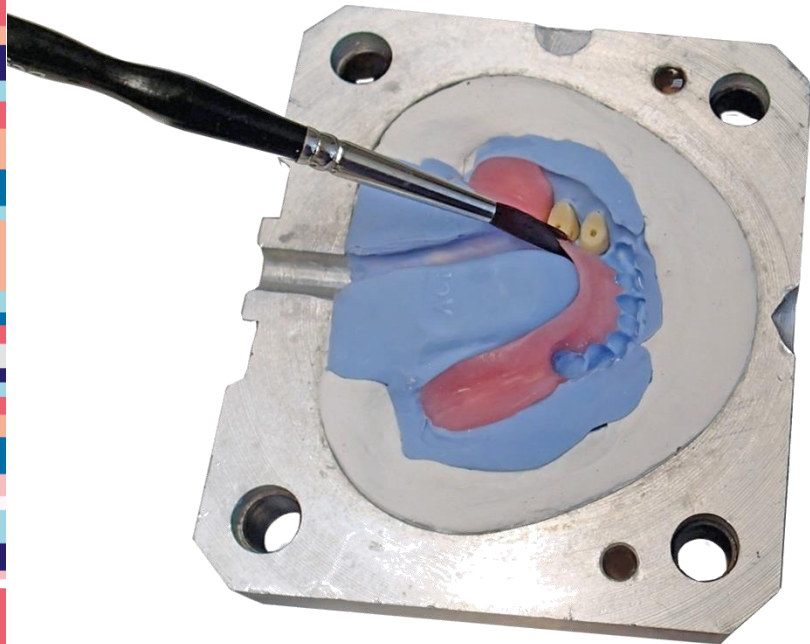


Create a mechanical retention (T-Shape)

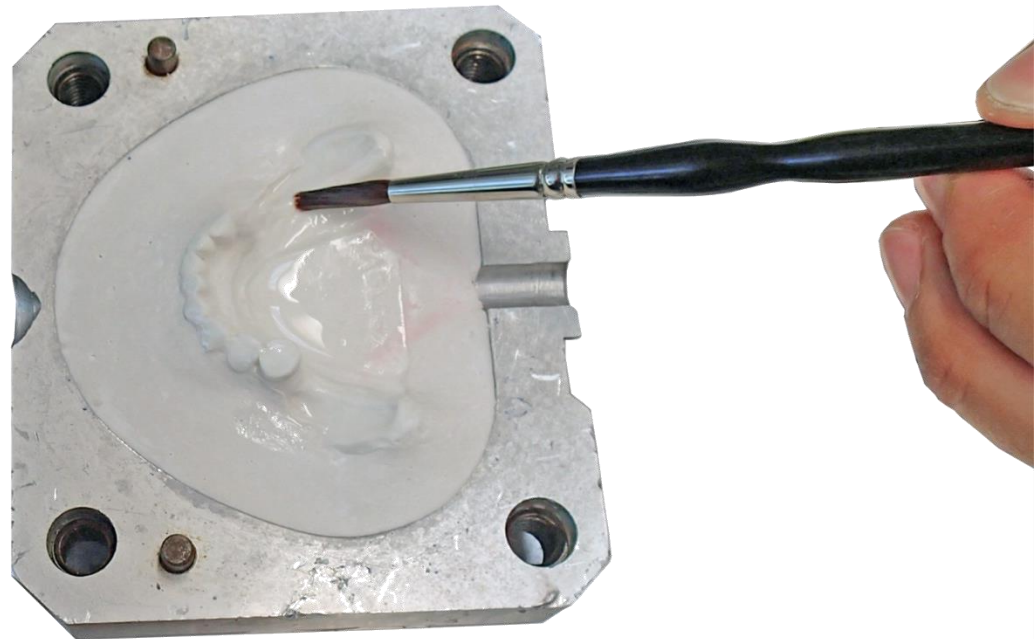


Cover model with ThermoFlow and add fusing liquid

Fusing liquid



ThermoFlow



Fill up a medium cartridge with ThermoSens



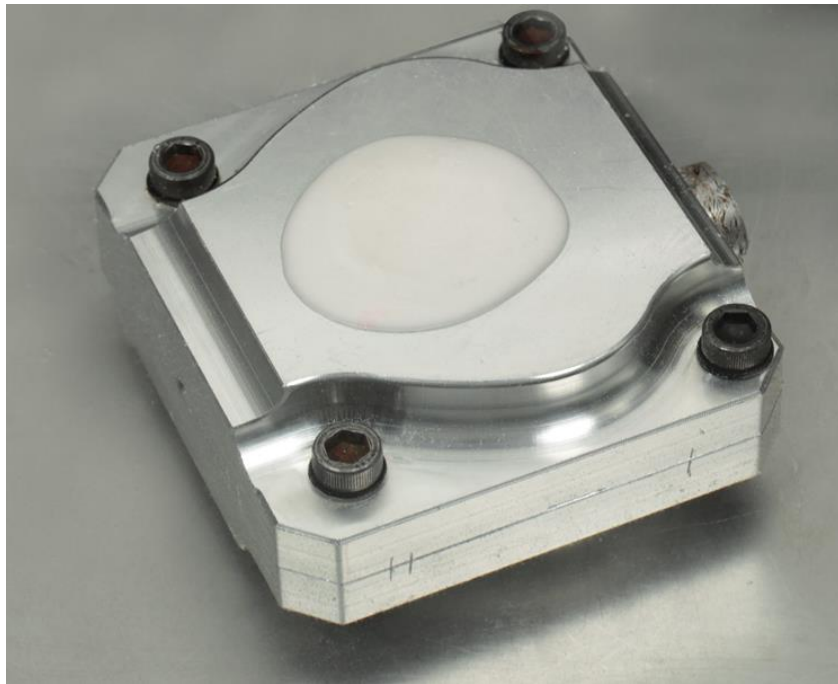
Place the flask on the Thermoject 22



Bench cooling

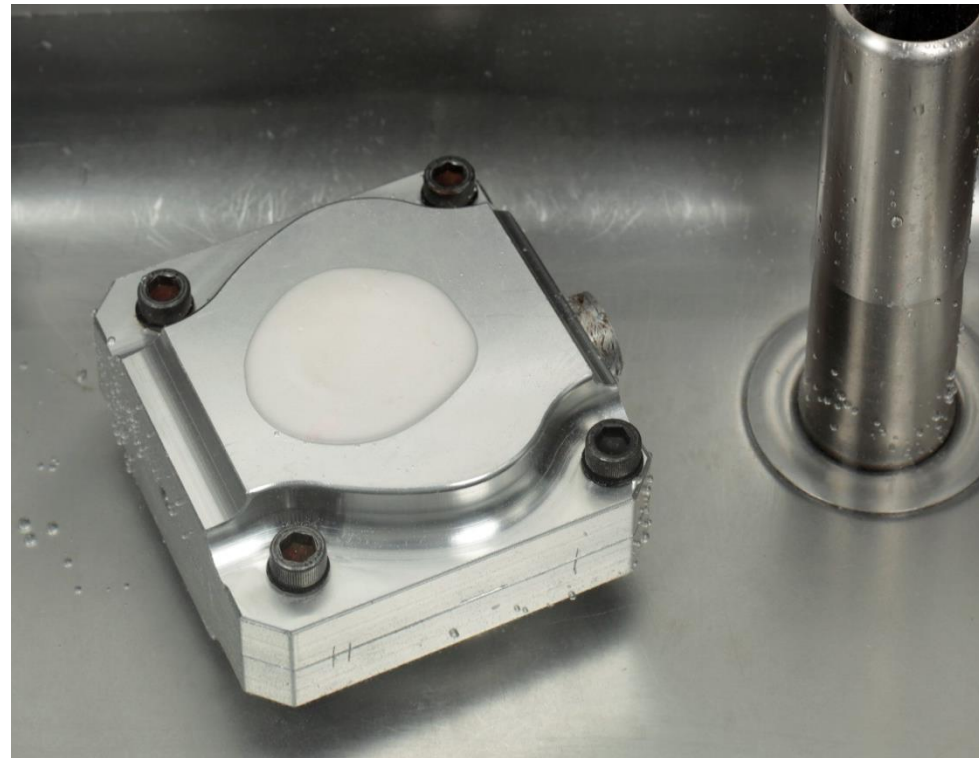
1st

30 min bench cooling

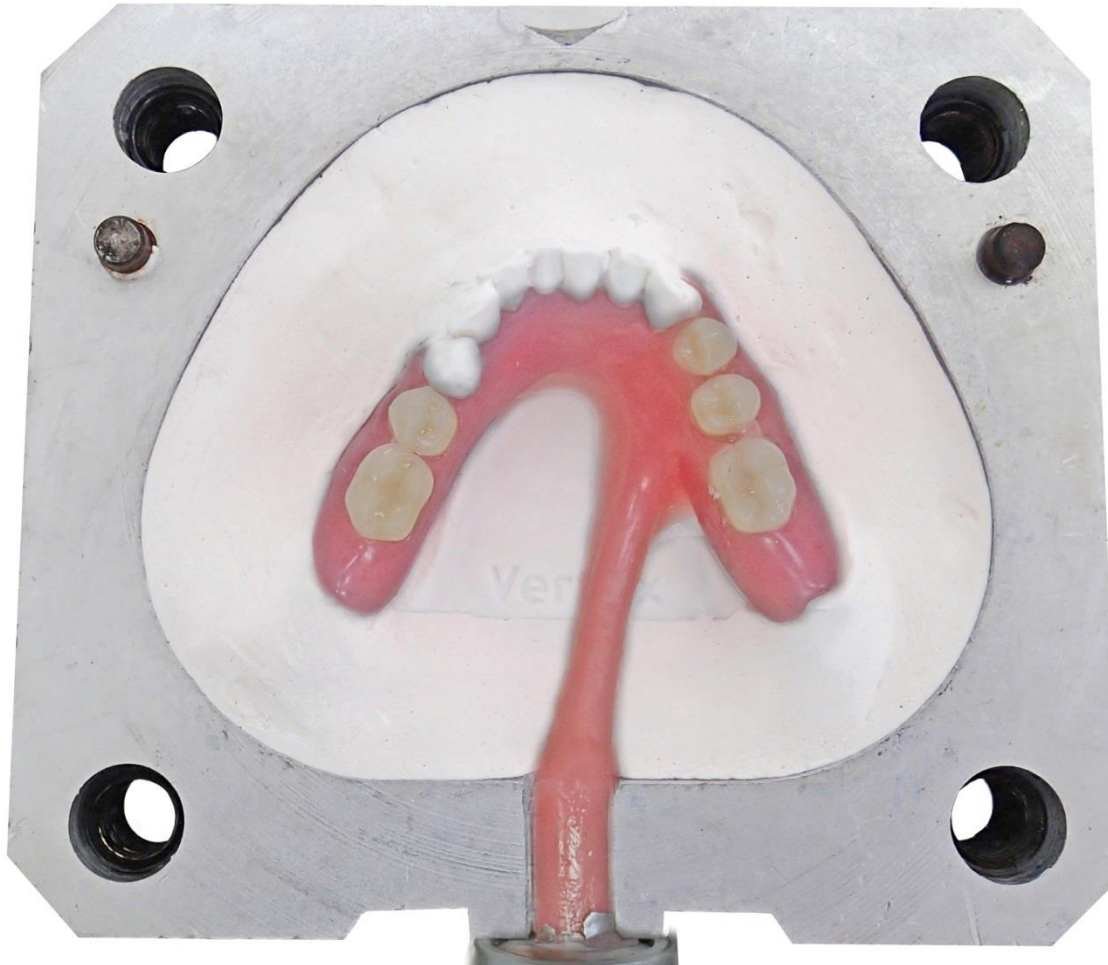


2nd

20 min in cold water



Result after the injection



Cut sprue and remove plaster



Grinding procedure



1st



2nd



3th



Polishing procedure

1st

Brush with Zeta micro fiber
Pumice



2nd

Felt cloth
Pumice

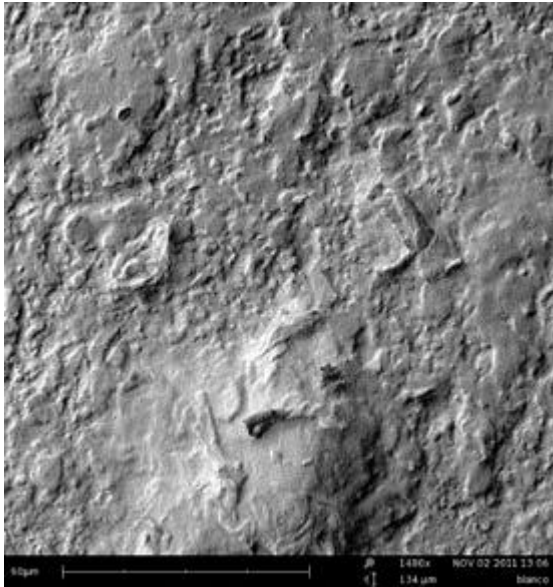


3th

Zeta micro fiber
High shine for metal

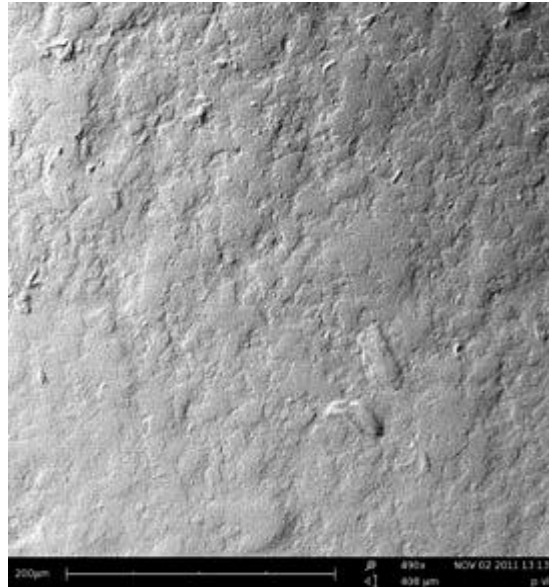


Surface properties



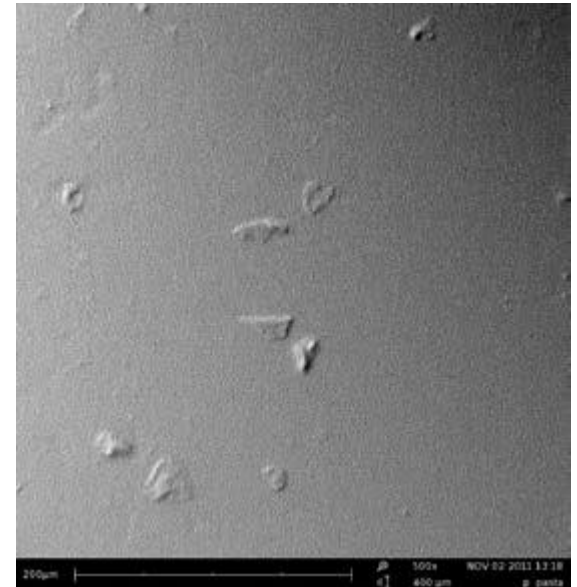
1

(1) Polishing result pumice



2

(2) After 5 minutes with Pumice



3

(3) After 8 minutes with high shine

End result partial denture



Endless options - indications



Holland™ ThermoSens

Lighter

Thinner

Stronger



Make the right choice, the ThermoSens choice!