

FDA Cleared

Unwrapped
FAST / 273°F

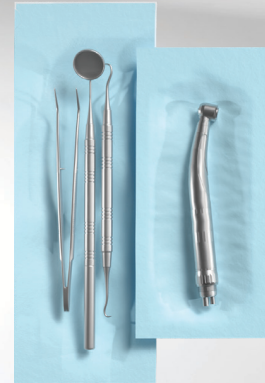
7 min

Wrapped
Vacuum / 273°F

15 min

Wrapped
Vacuum / 250°F

45 min



x8

Enbio^S Technical Data



Vacuum
Pouches
+ drying

Contact for details

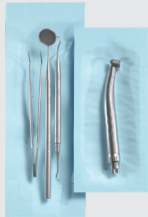


Unique Dental Supply Inc.
Quality • Service • Innovation

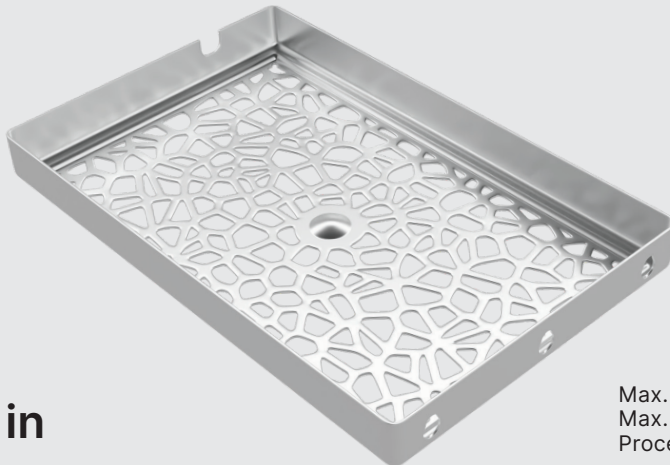
orders@udscanada.com / www.udscanada.com

1-888-532-0554

Capacity



x8



Load space
11x7x1.3 in

Max. packages amount (circa) **8**
Max. recommended batch weight **1.1 lb**
Process chamber volume **2.7 l**



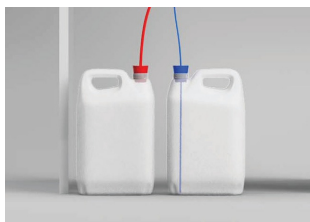
Power supply

Enbio® works with any typical electrical outlet.



Data archiving

All process data are automatically written to a USB disk.



Water supply

Enbio uses distilled water from external tank.



Process reports

Enbio Data Viewer (included) allows generating and printing detailed process reports from the data on USB.

Dimensions



Pressure & temperature

Working pressure **2.1 Bar/30.5 psi**
Max. pressure **2.3 Bar/33.4 psi**
Max. process temperature **137°C/278.6°F**

Electrical

Power supply **110-120V/60Hz**
Installed power **3.23 kW**
Max. power consumption **15 A**

Misc

Ingress protection **IP20**
Data archiving **USB**
Water conductivity* **< 15 µS/cm**

* - demineralized water only

Contact for details



Unique Dental Supply Inc.
Quality • Service • Innovation

orders@udscanada.com / www.udscanada.com

1-888-532-0554