

STAR WARS

TM & ©
LUCASFILM



499
PCS

8+

PAPER MODEL KIT
MODÉLISATION EN PAPIER
MODELISMO EN PAPEL



AT-AT™, AT-ST™ & SNOWSPEEDER™ SET





Craft glue required during assembly.
Drip icon identifies where glue is applied.

Colle artisanale est requise lors de l'assemblage.
L'icône de goutte identifie où la colle doit être appliquée.

Se necesita pegamento para manualidades durante el montaje.
El símbolo de la gota indica donde aplicar el pegamento.



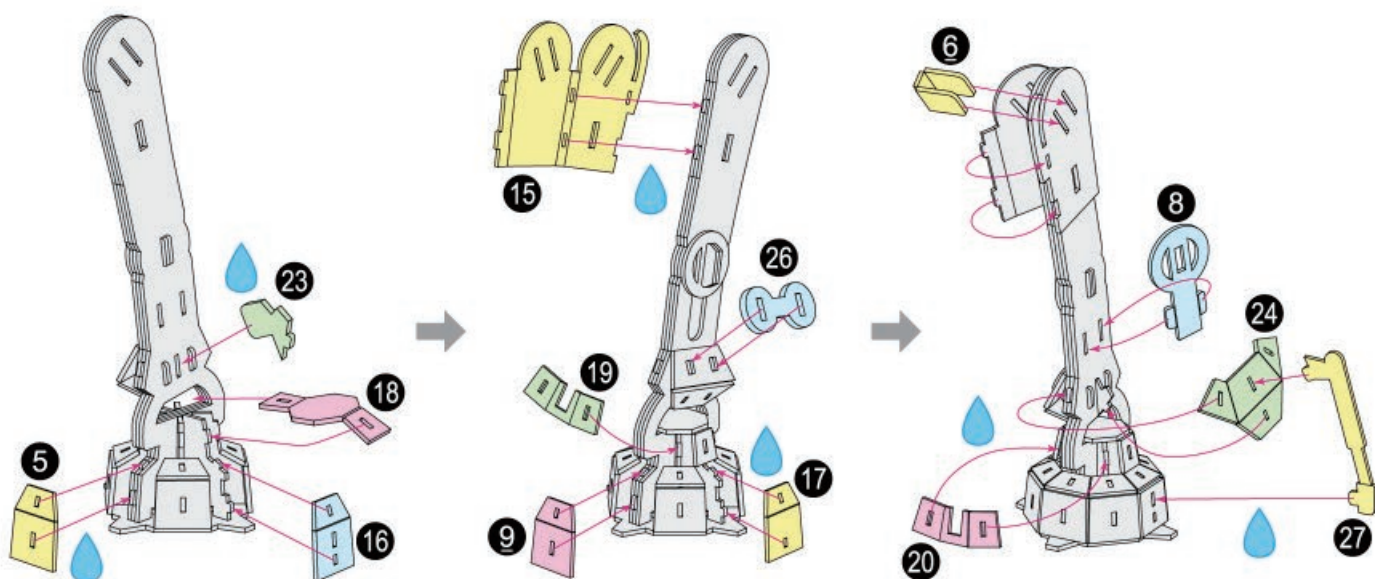
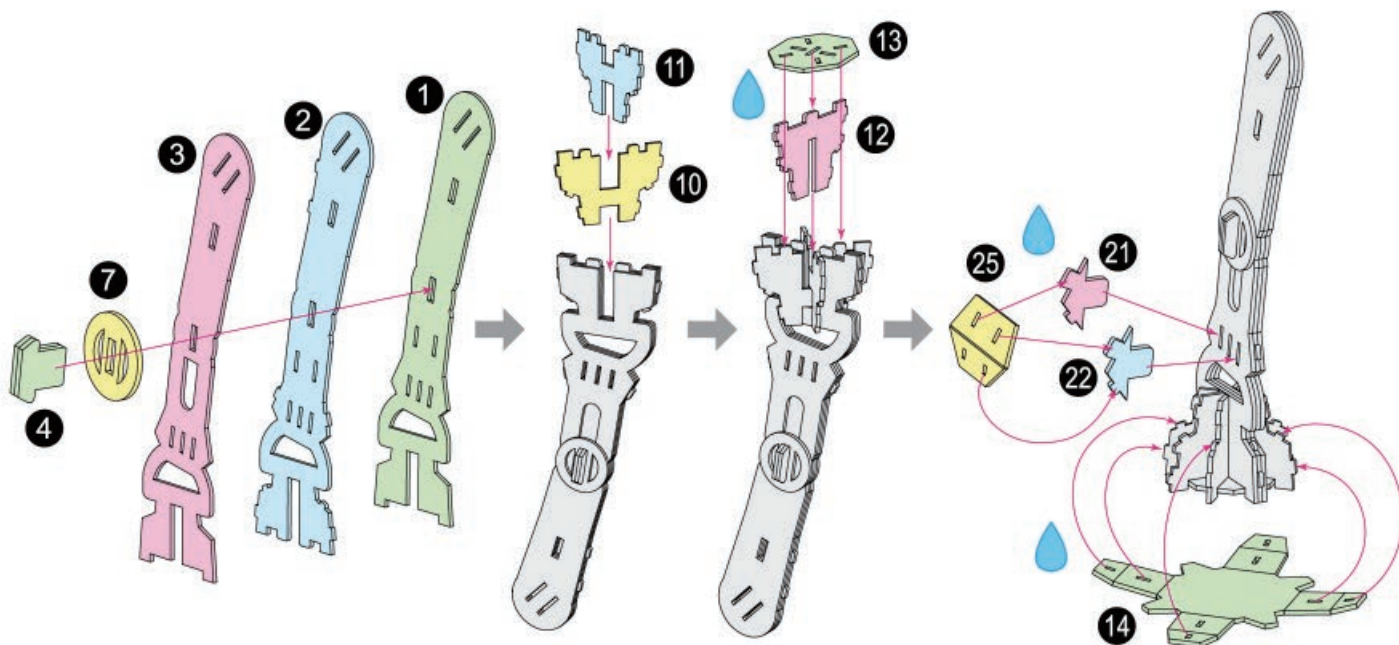
X 2

p 5/10

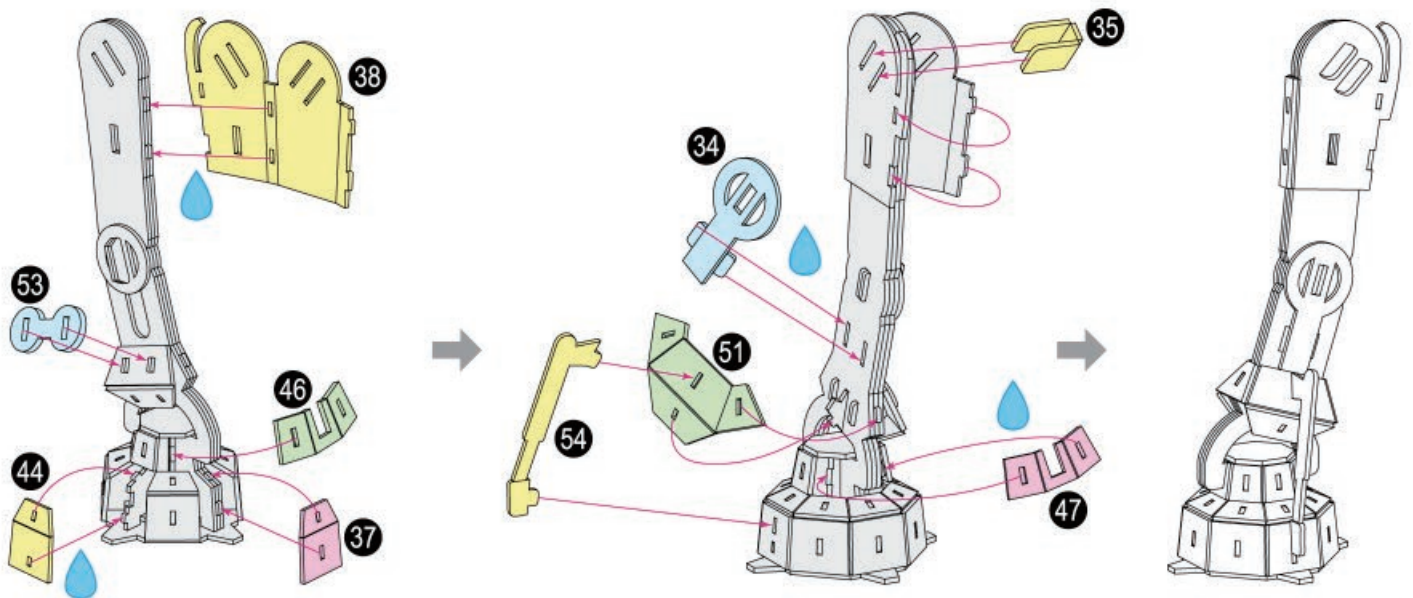
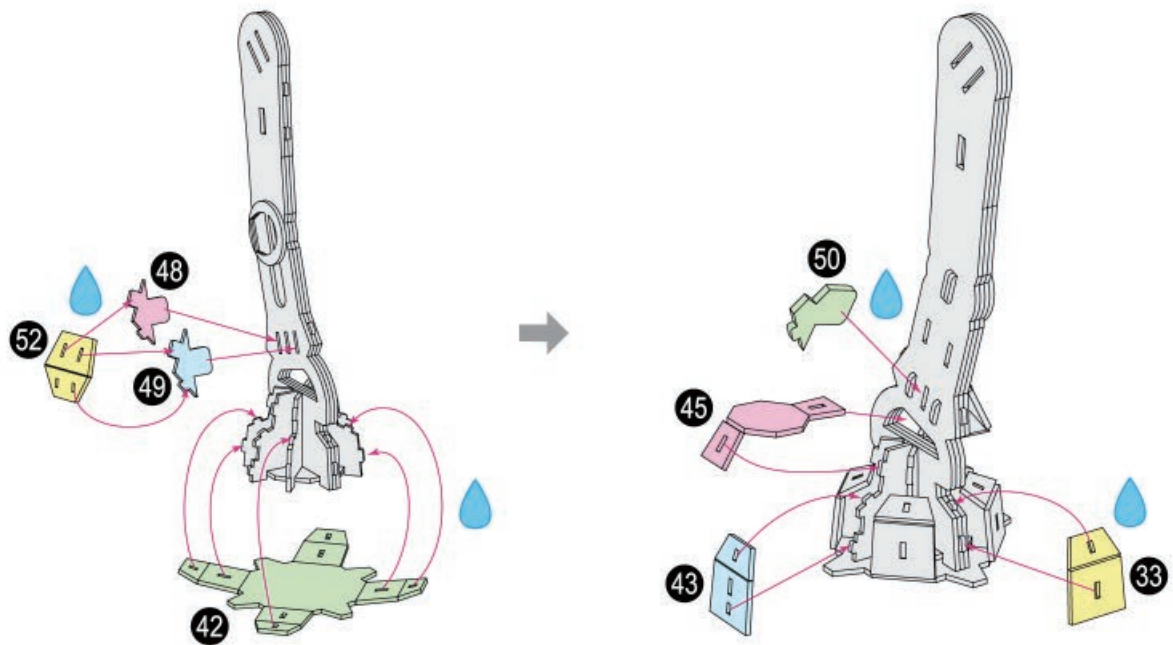
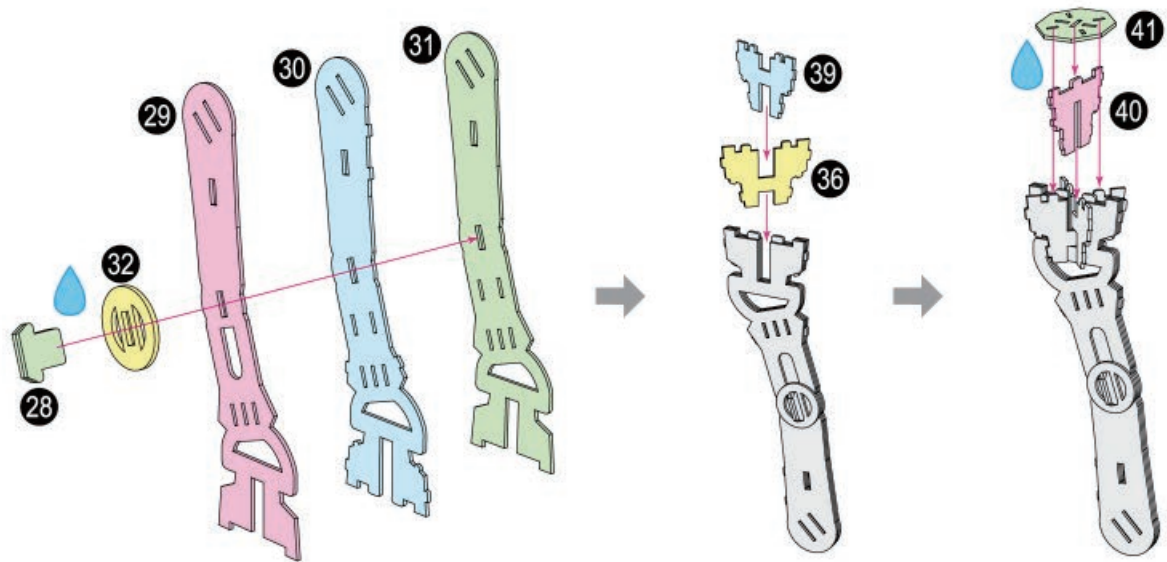


Imperial AT-AT™ 1

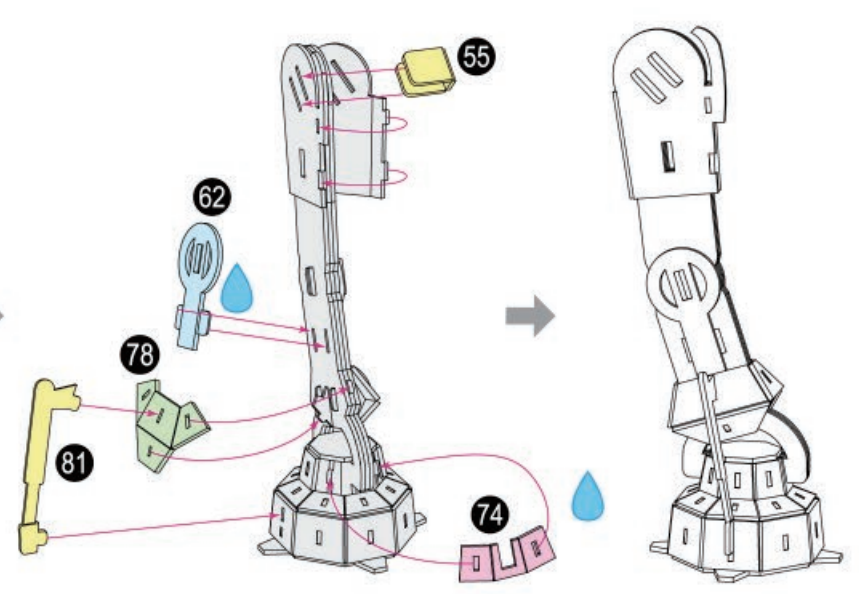
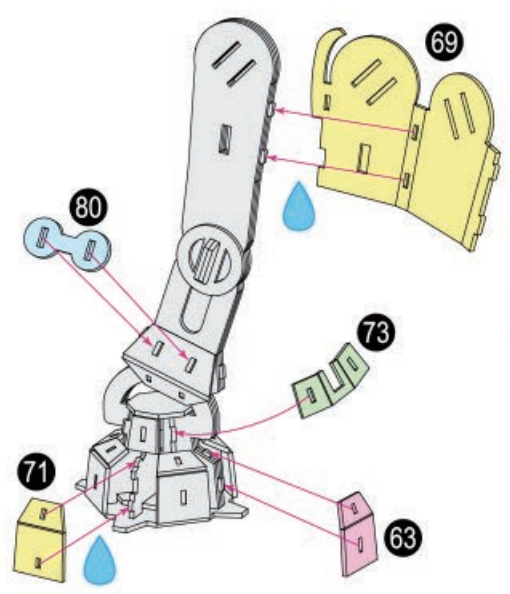
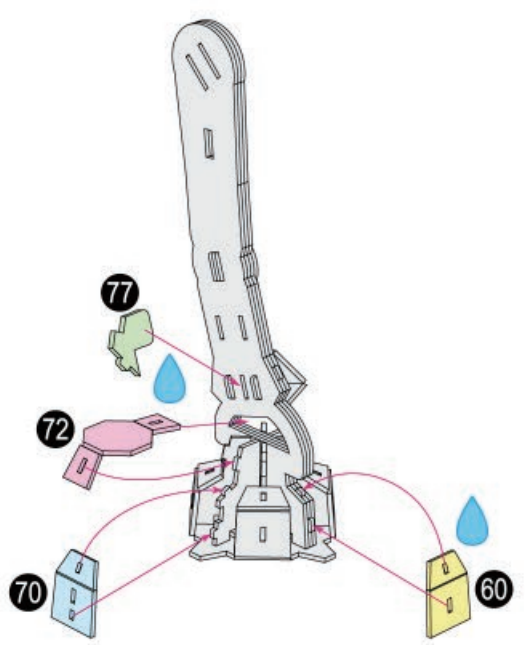
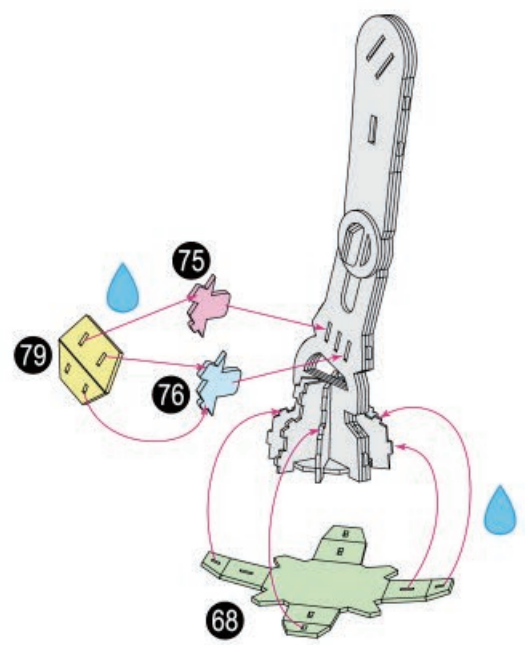
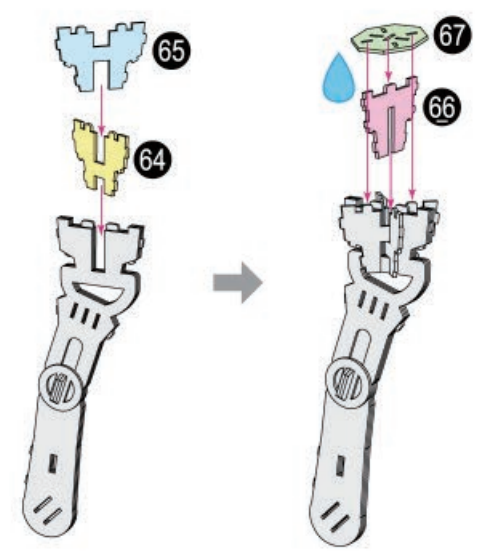
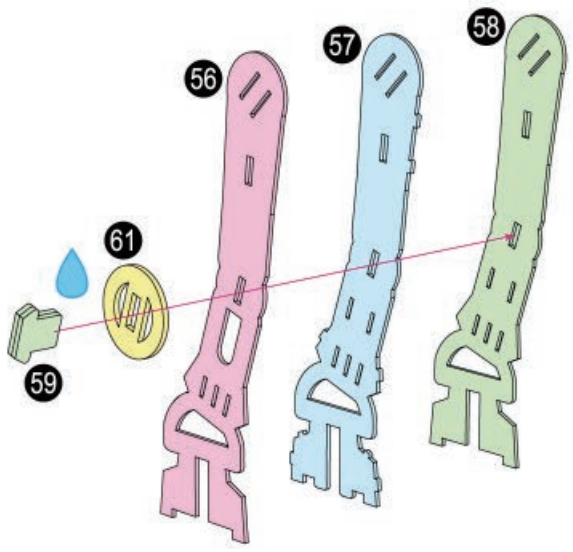
1



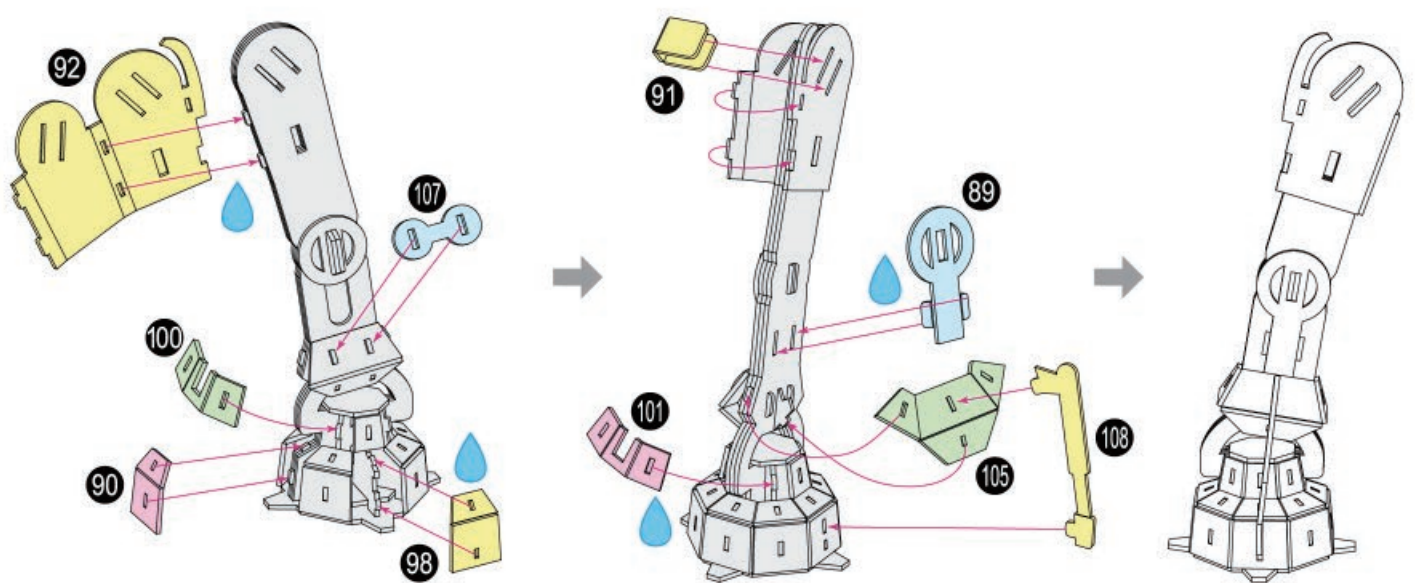
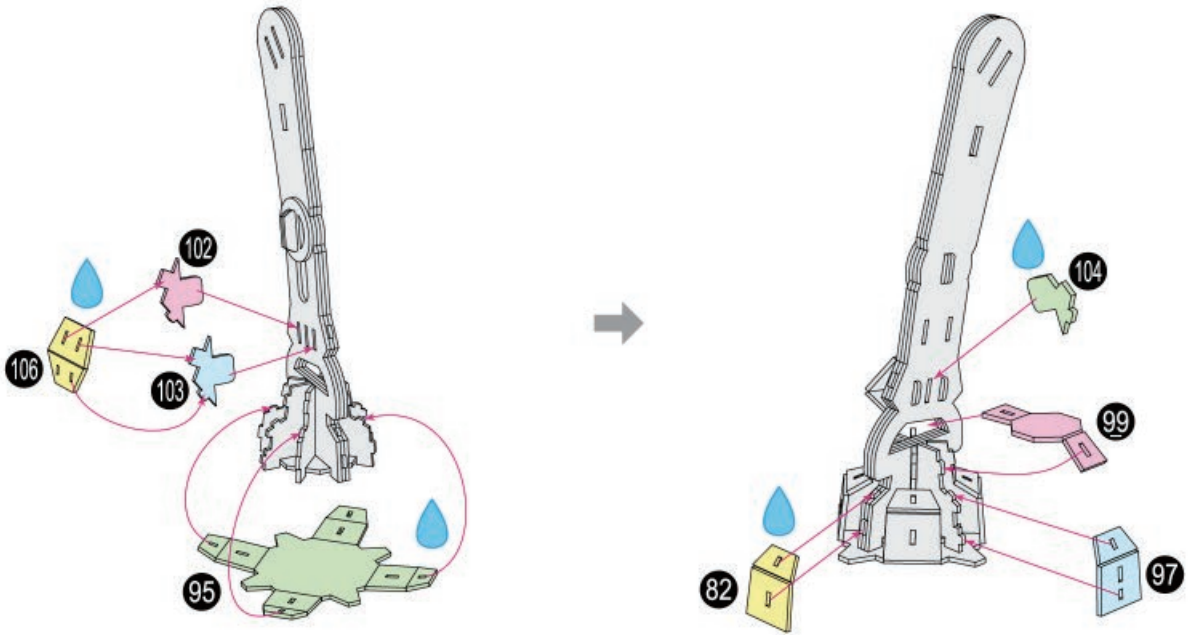
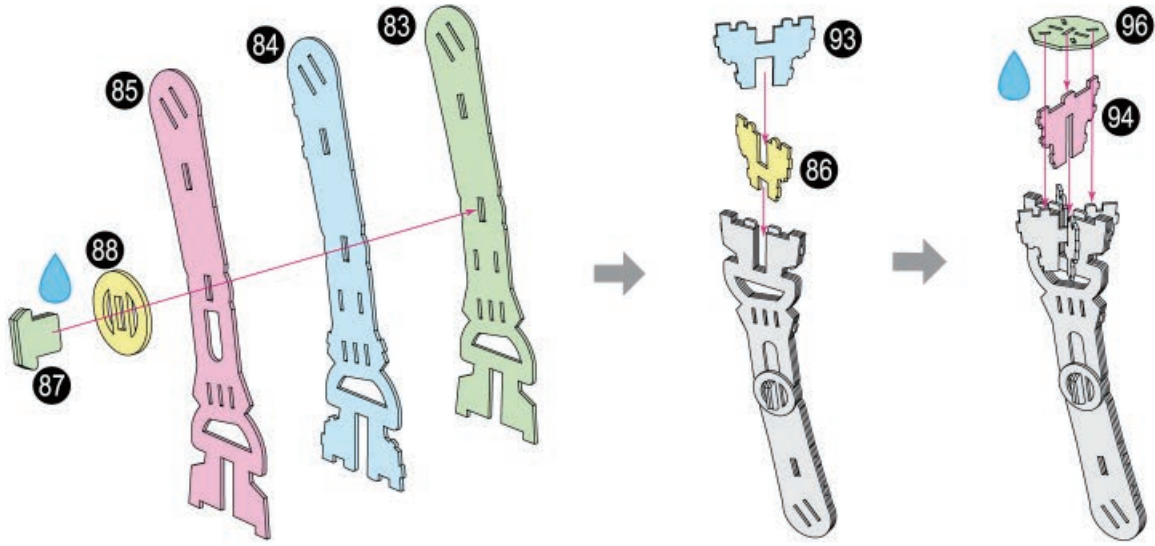
2



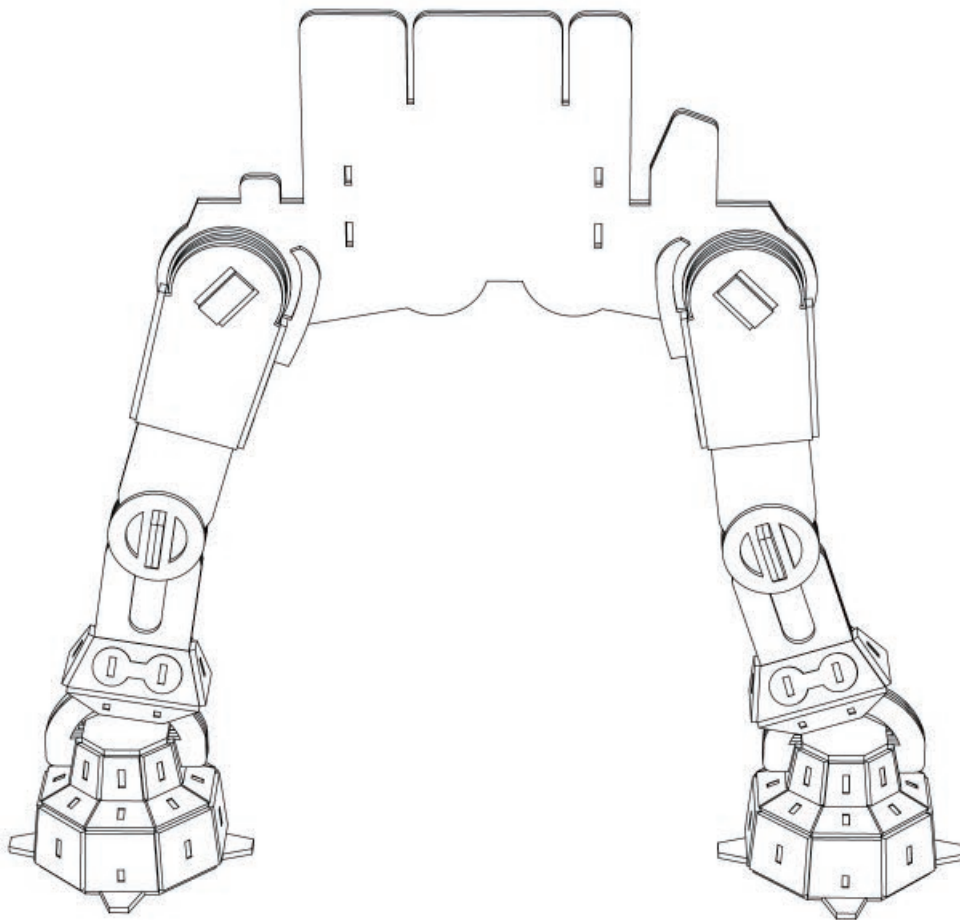
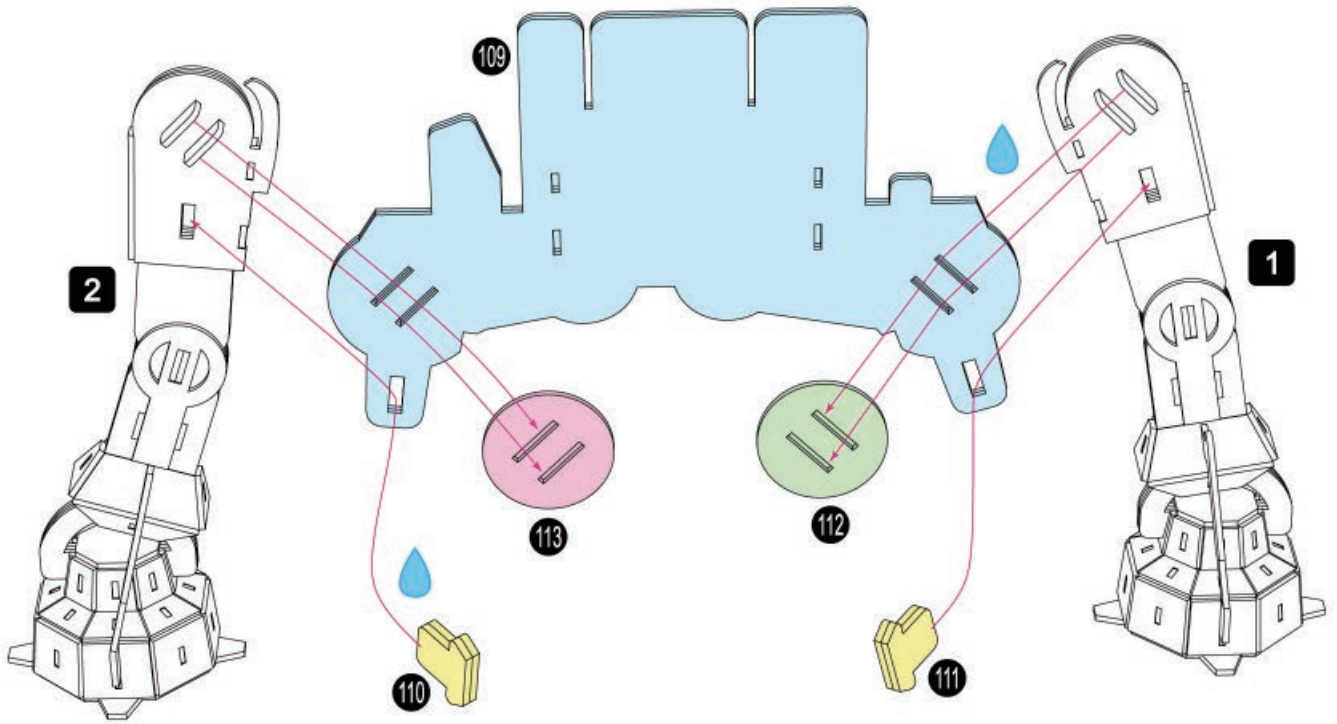
3



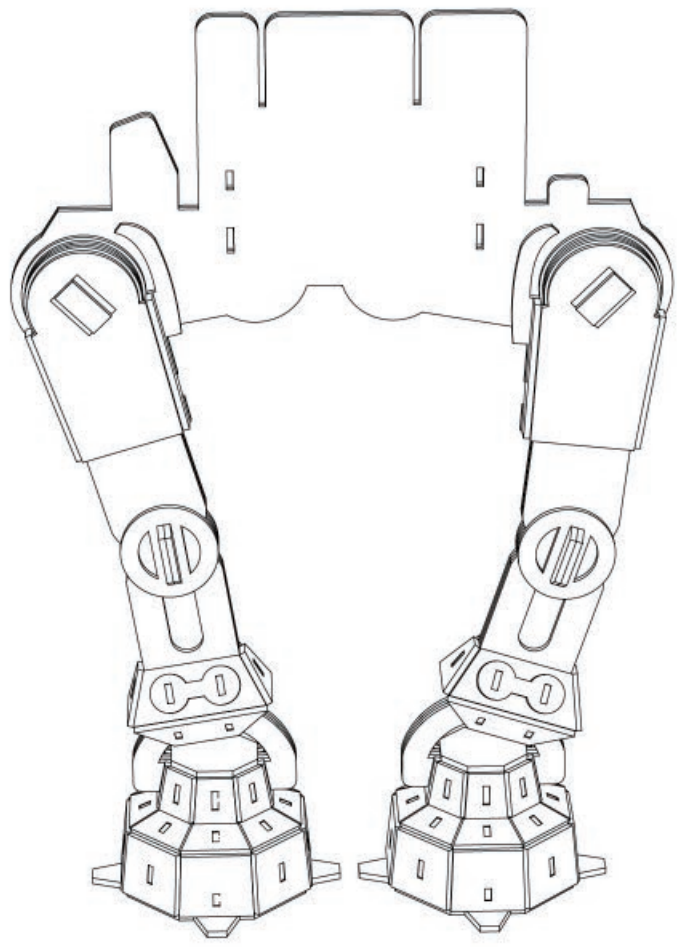
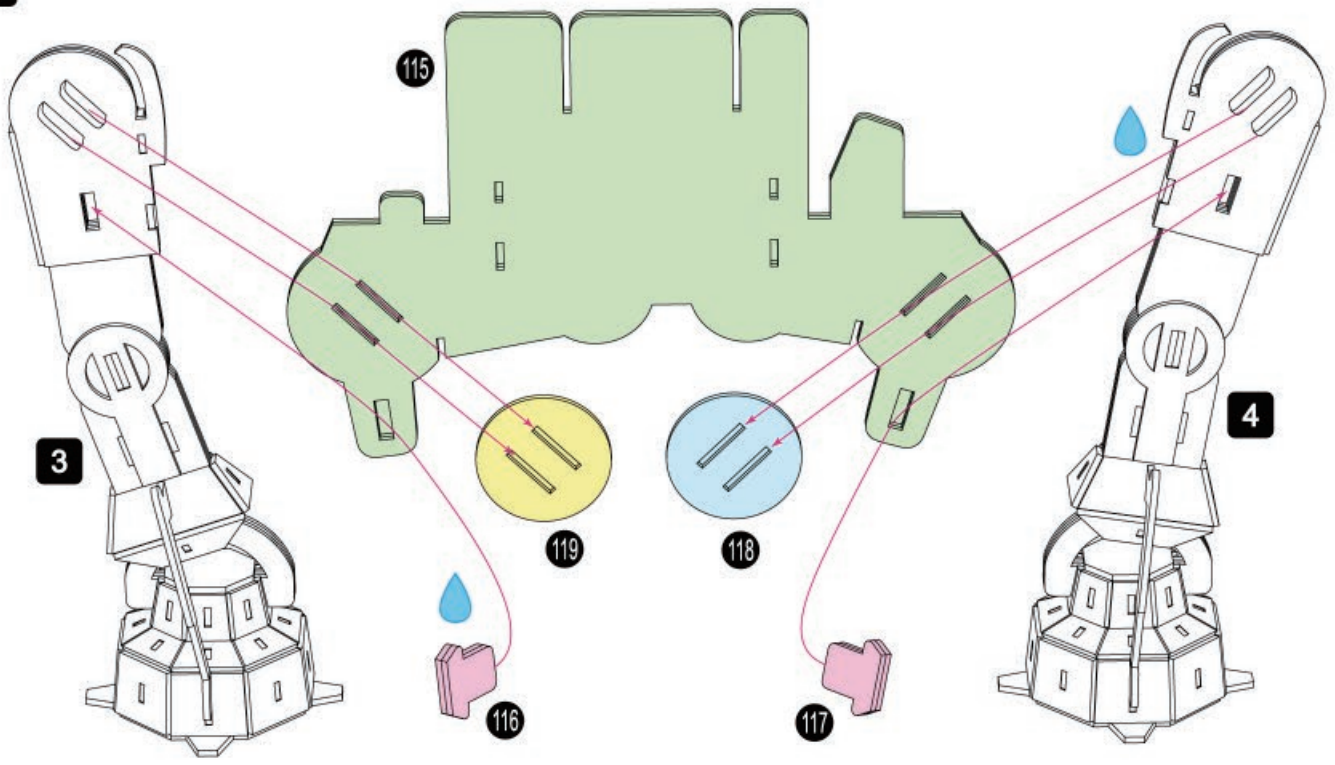
4



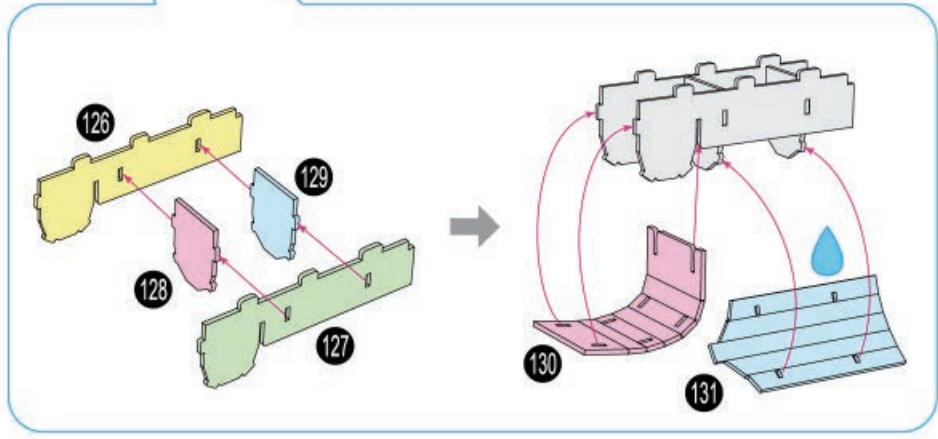
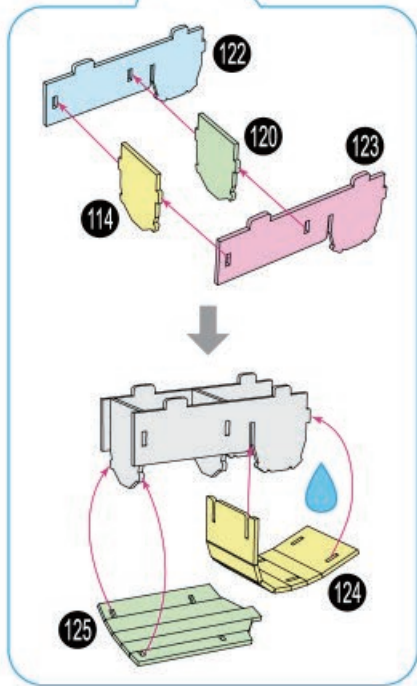
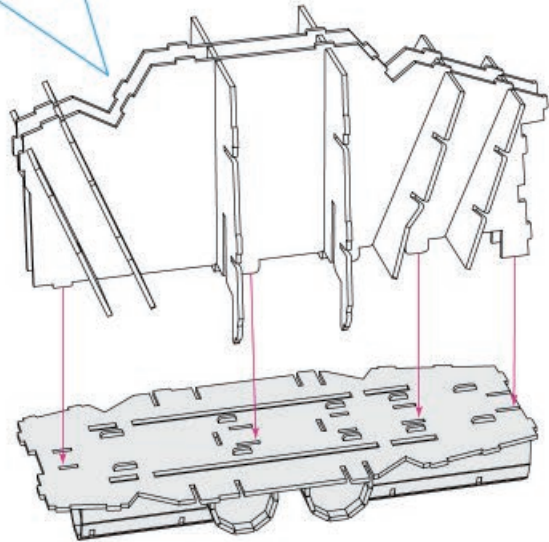
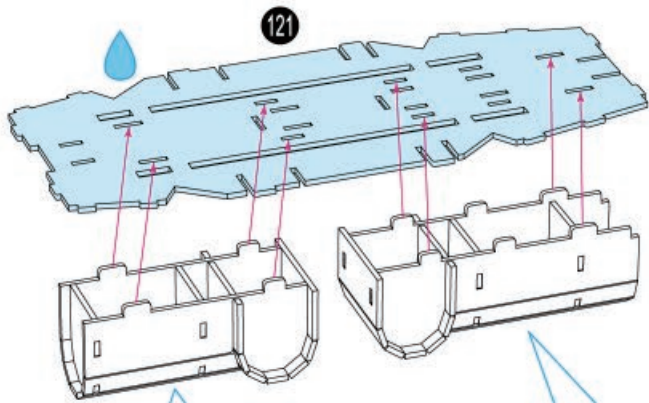
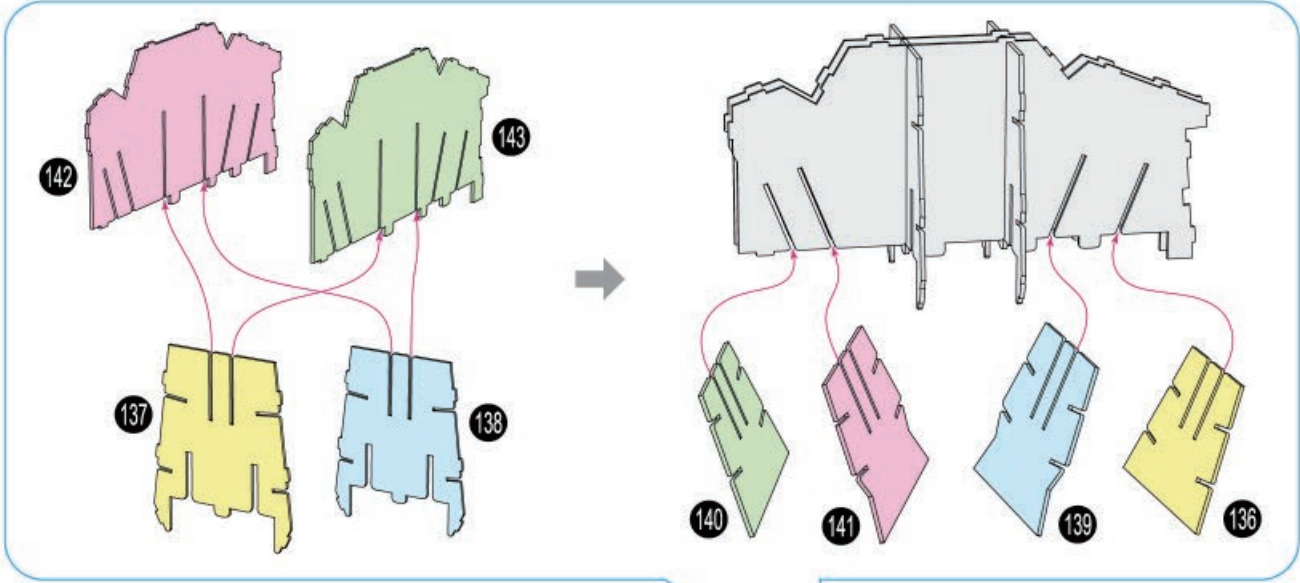
5



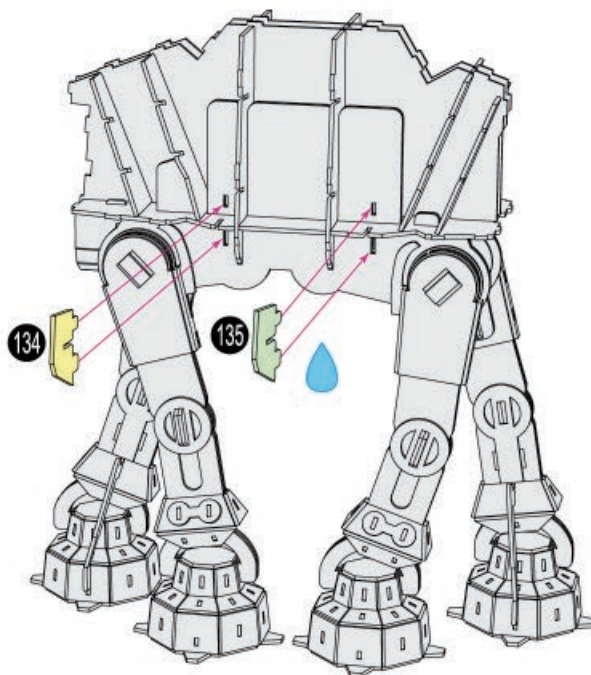
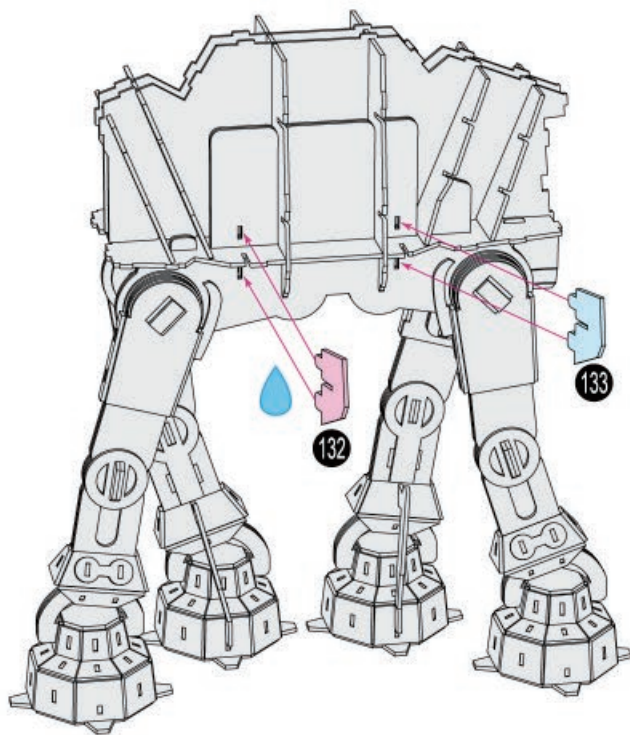
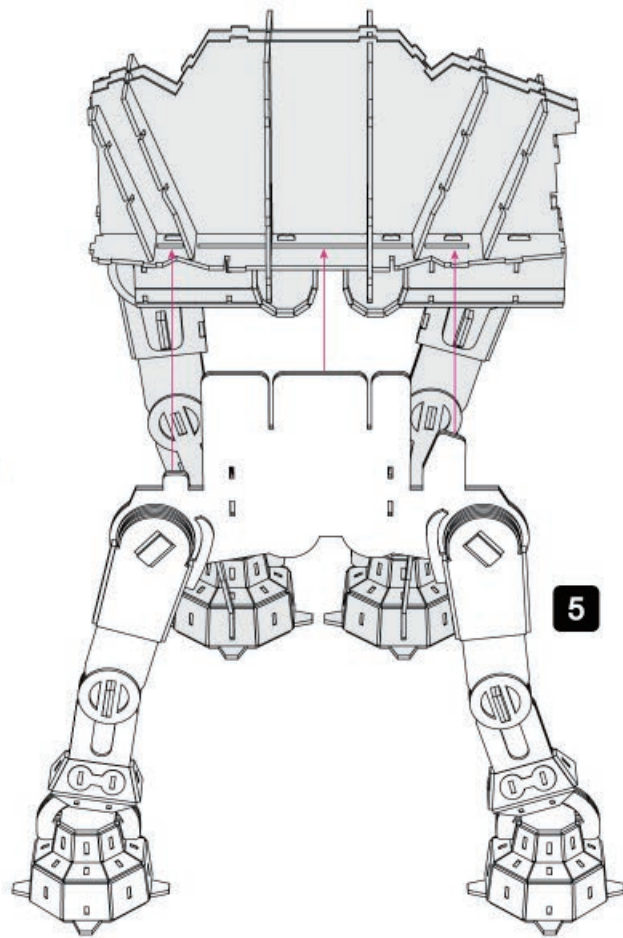
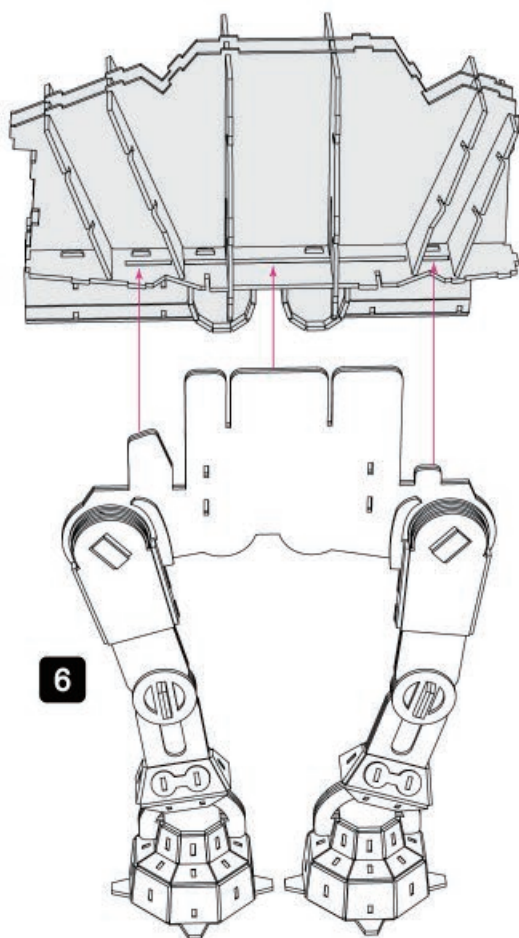
6

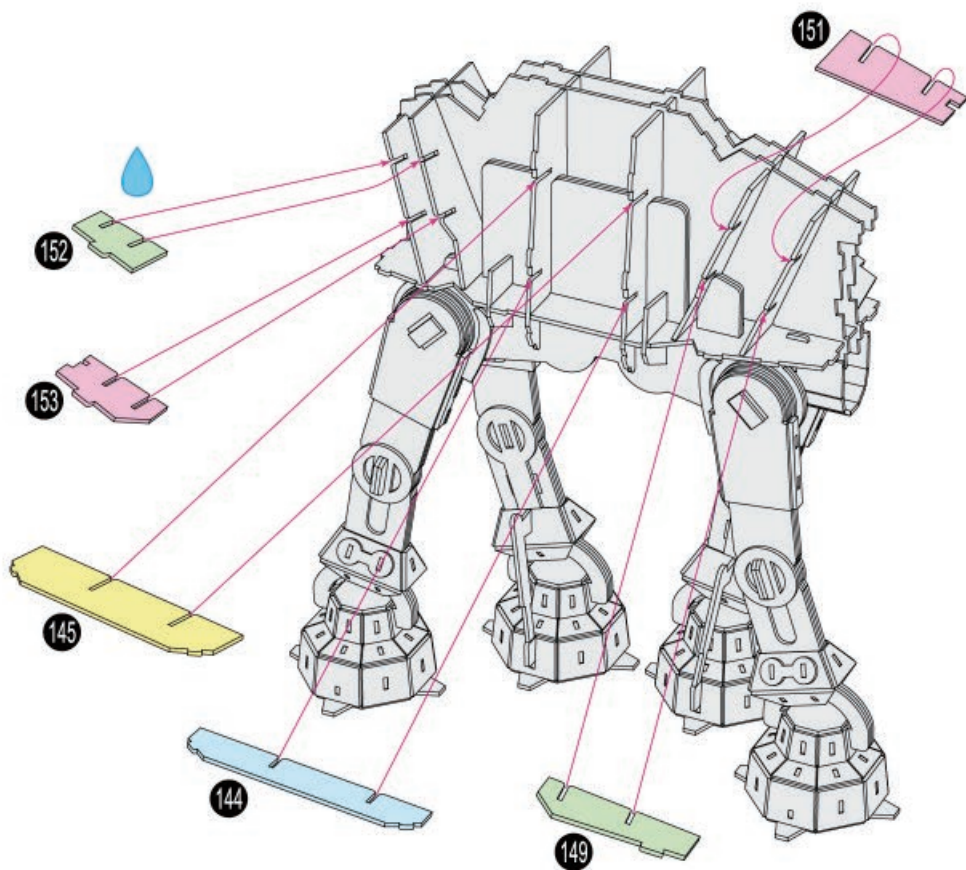
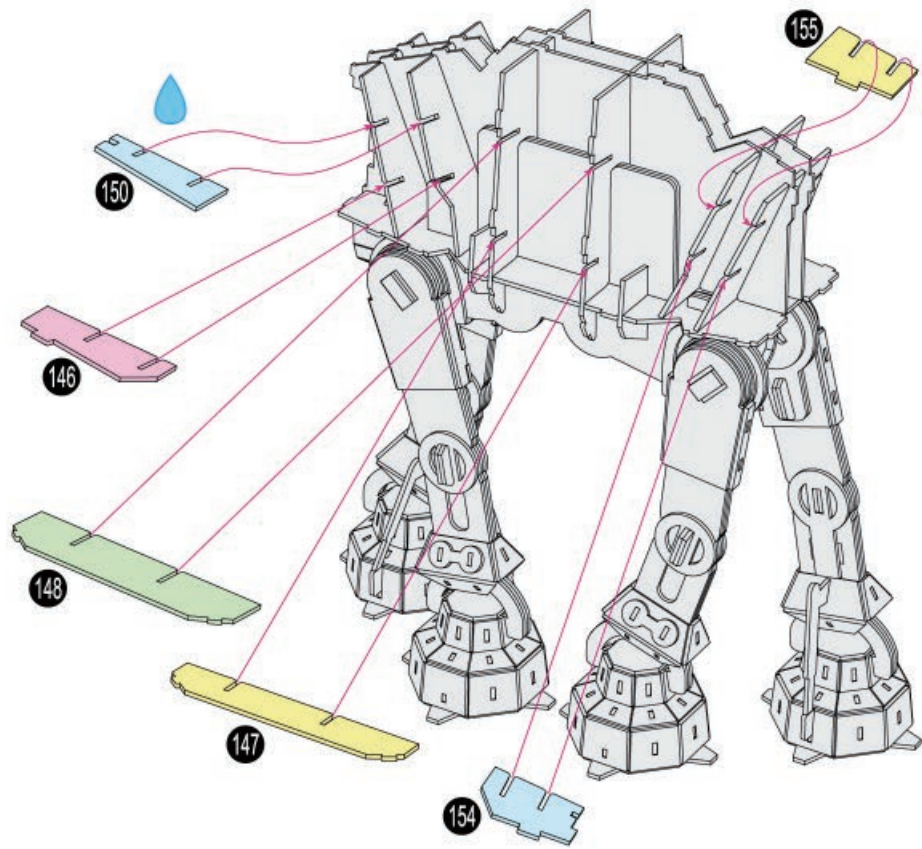


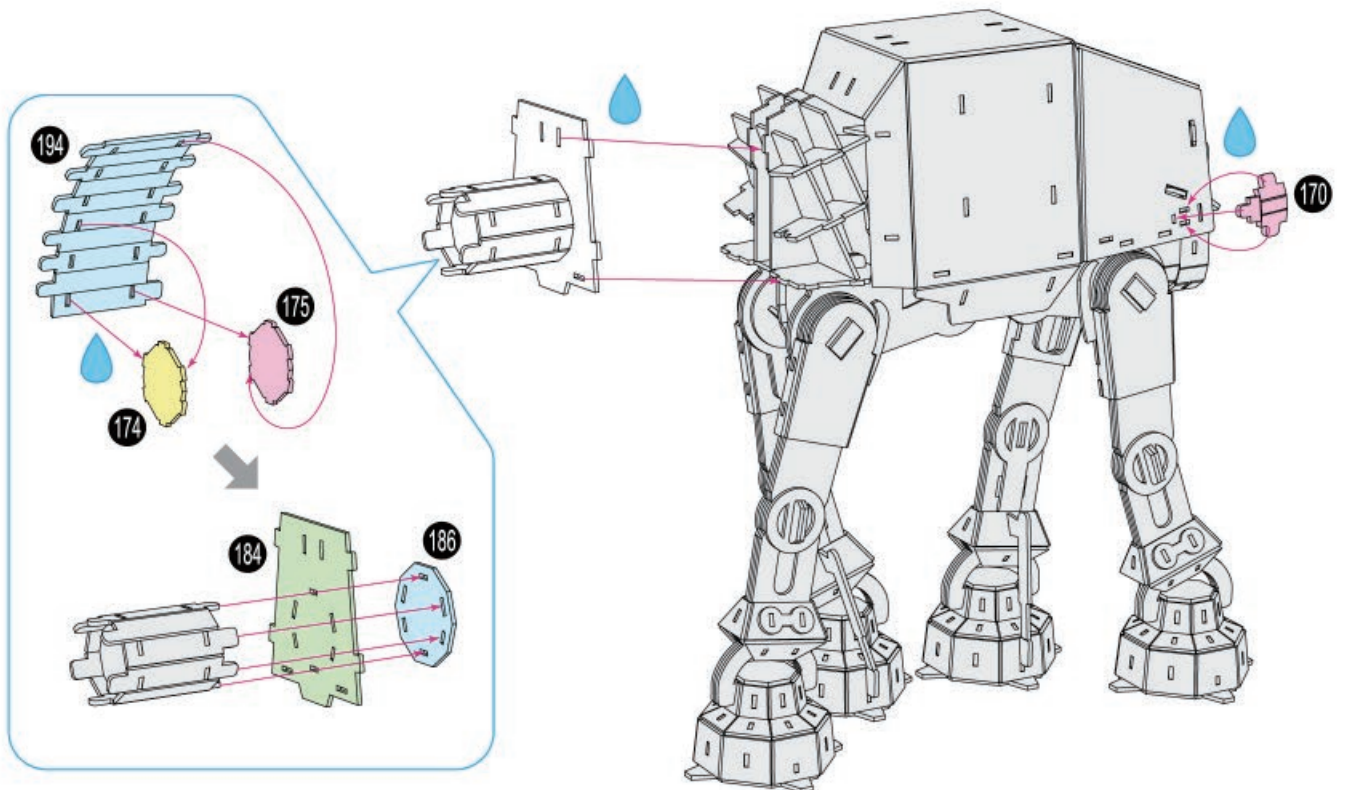
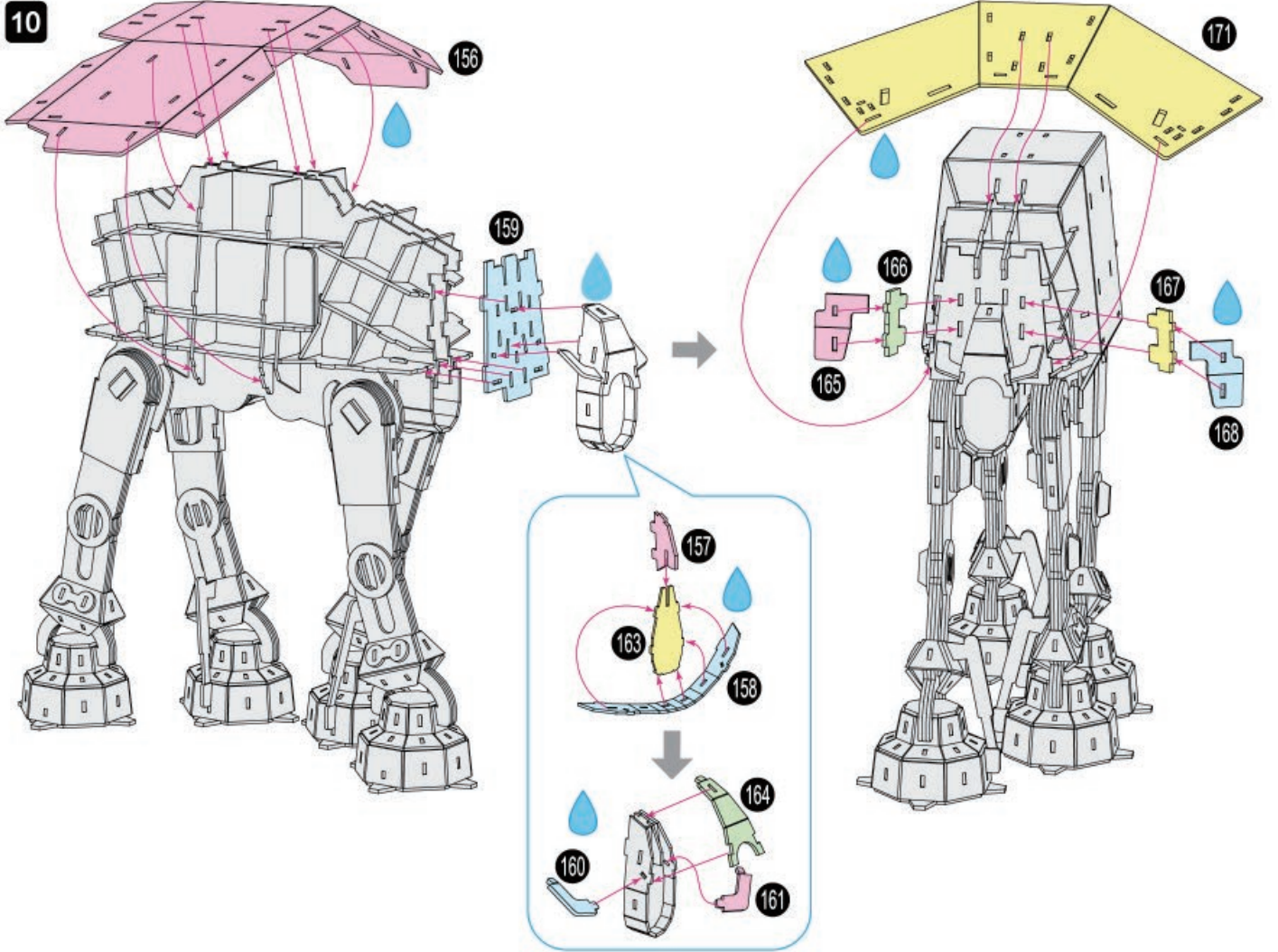
7

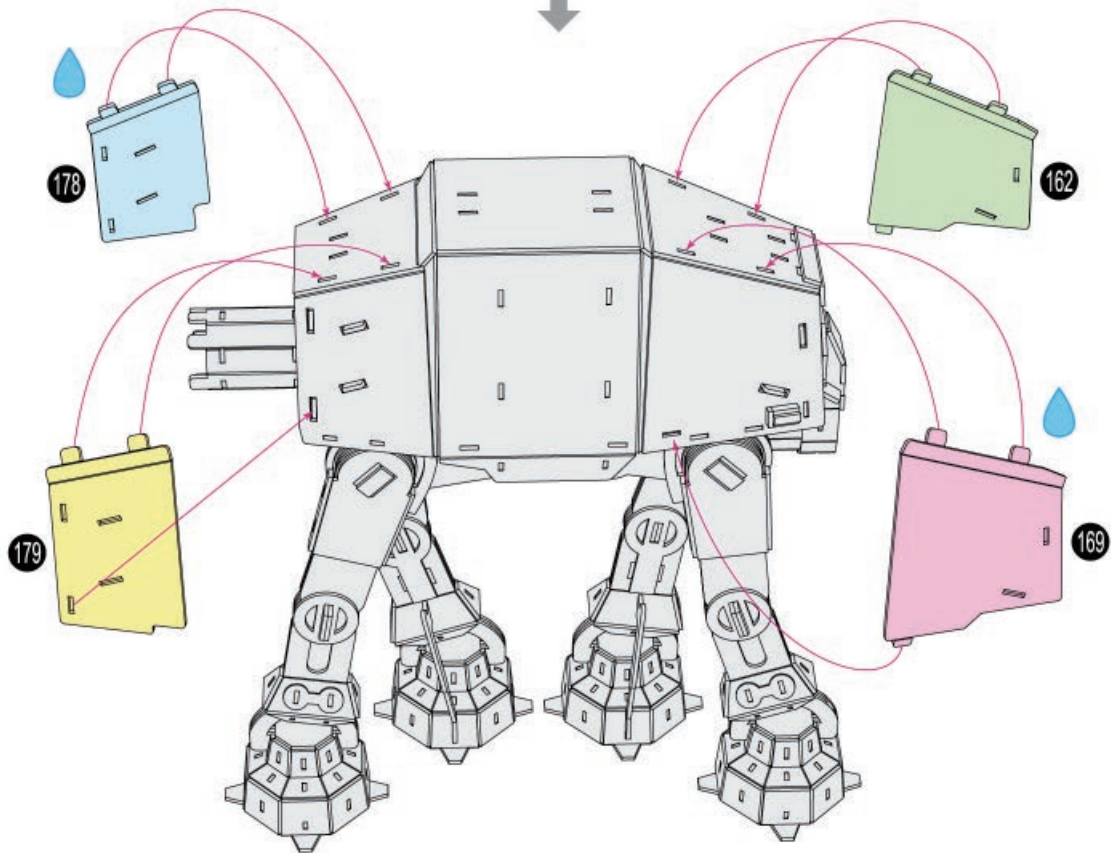
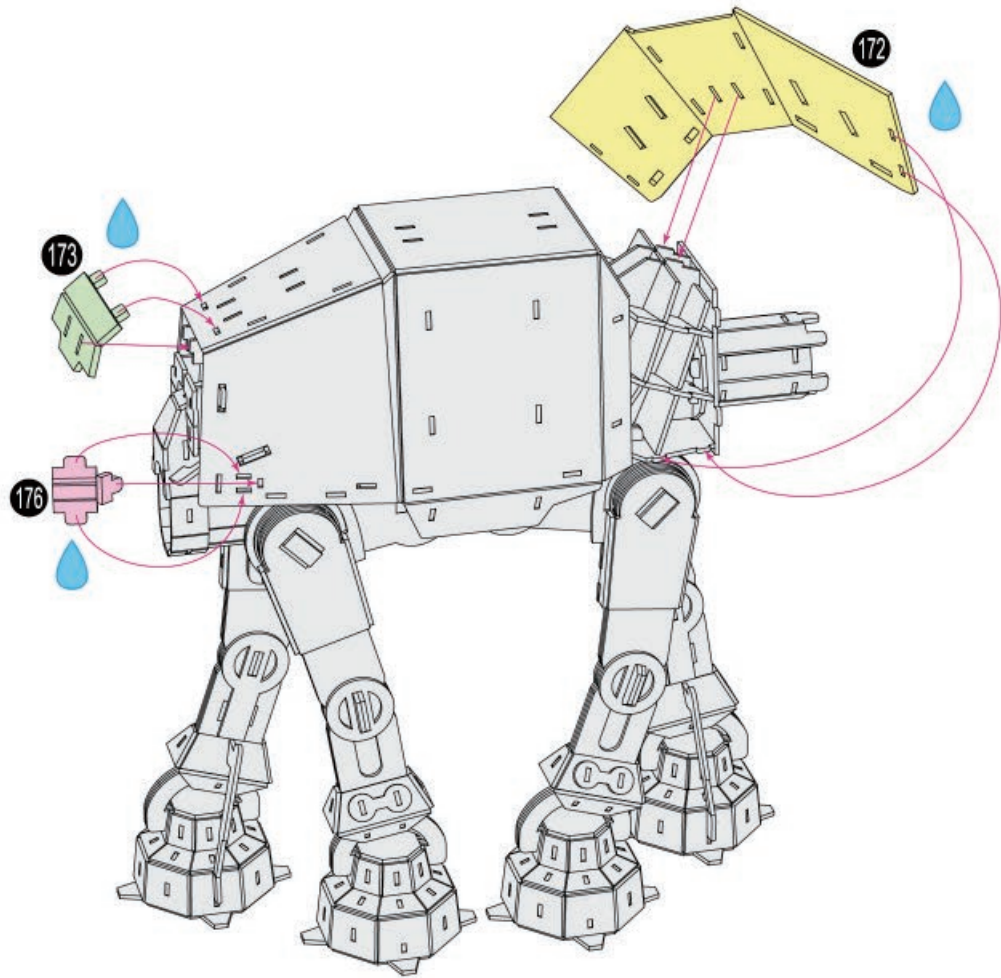


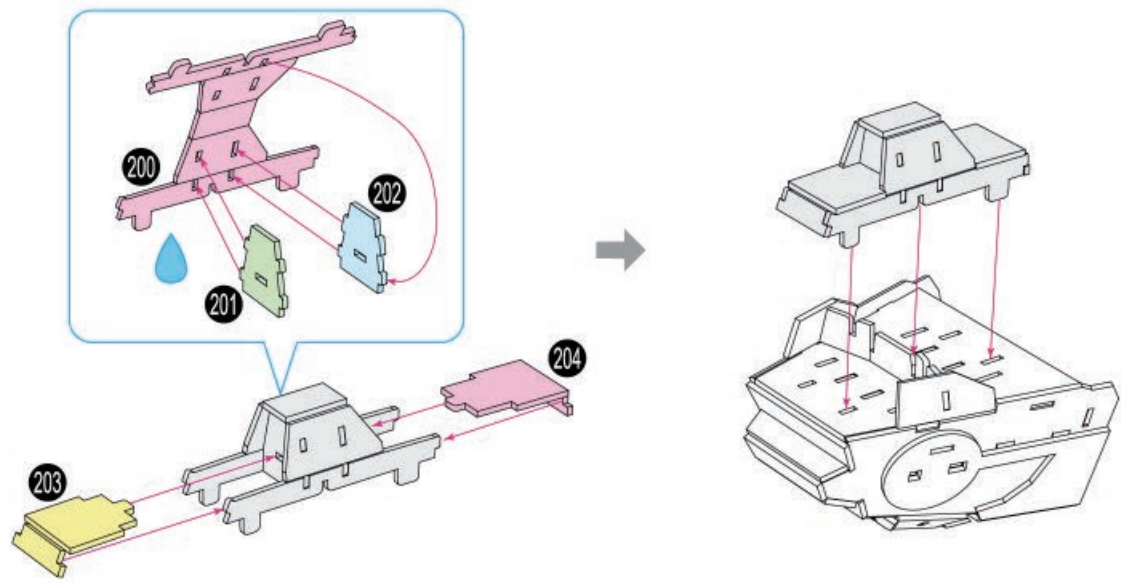
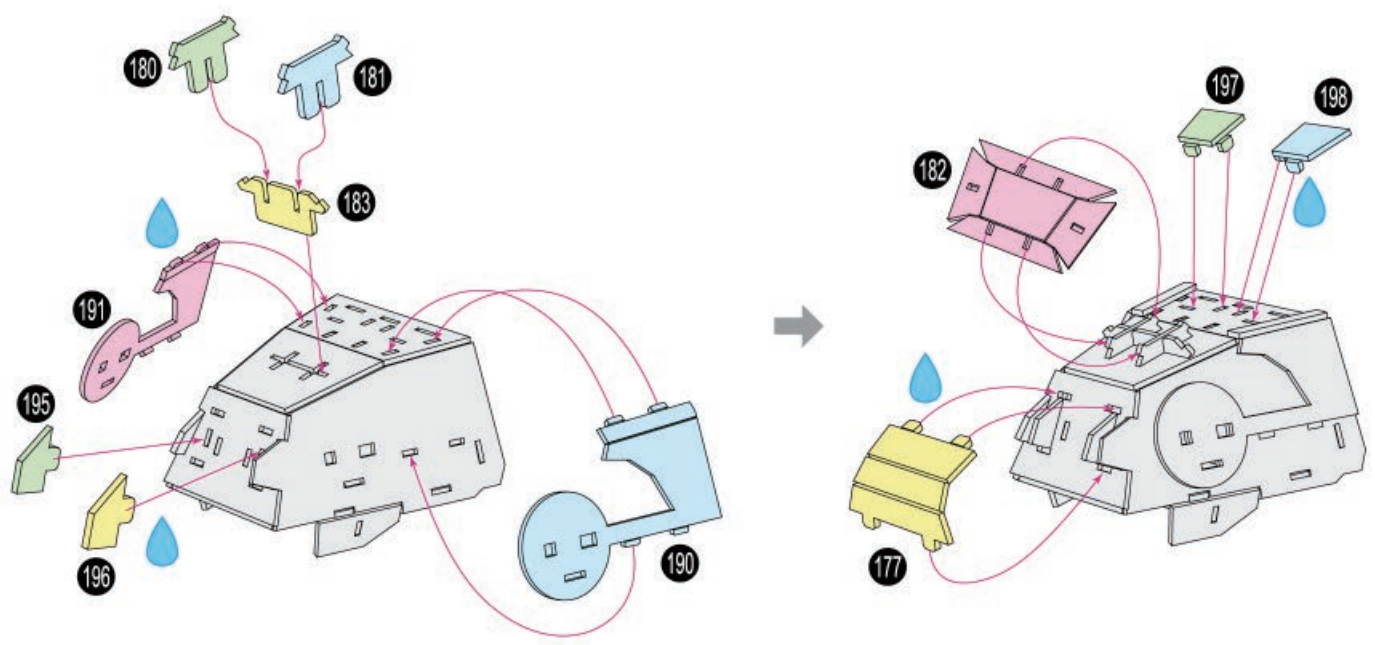
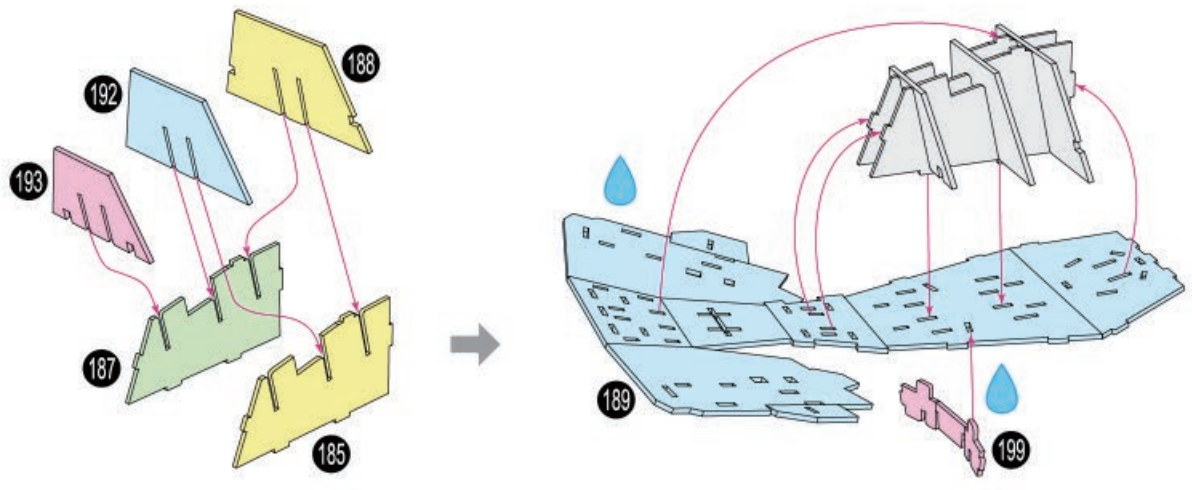
8

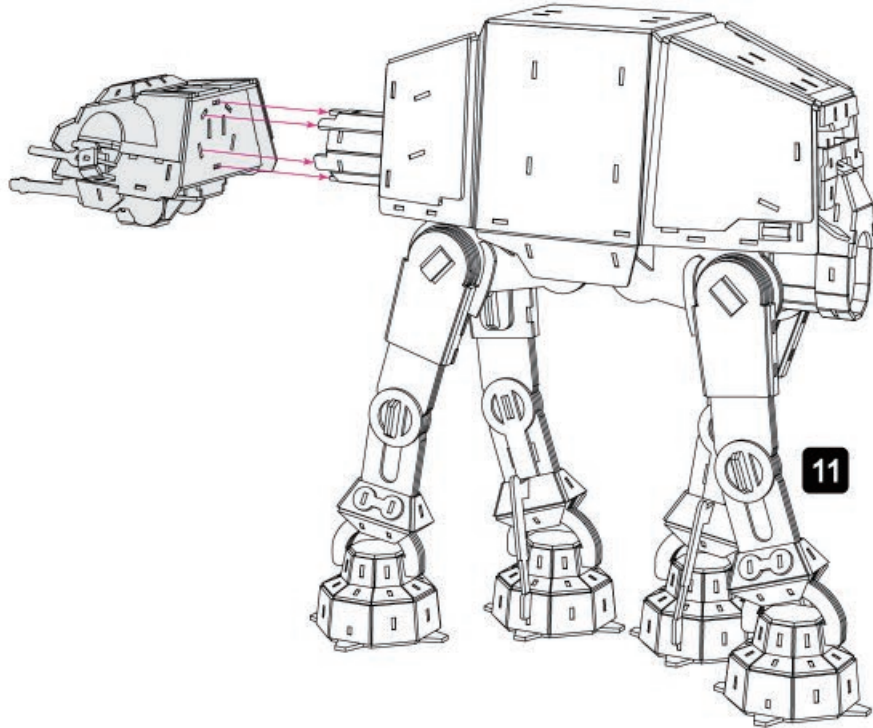
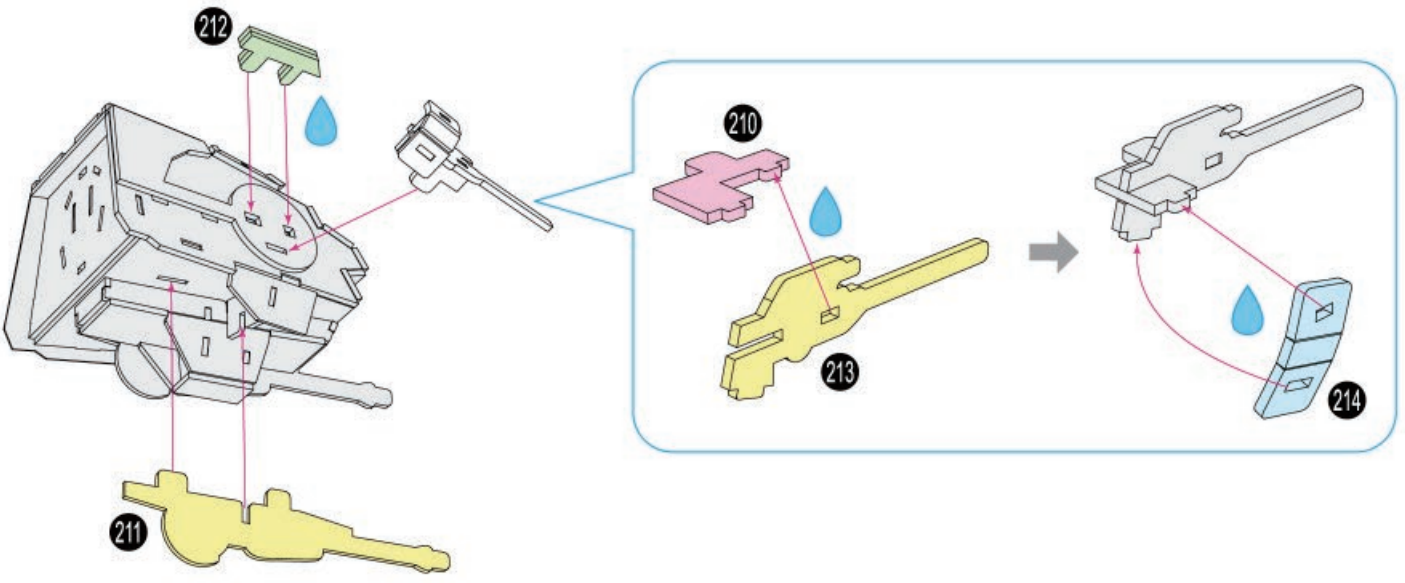
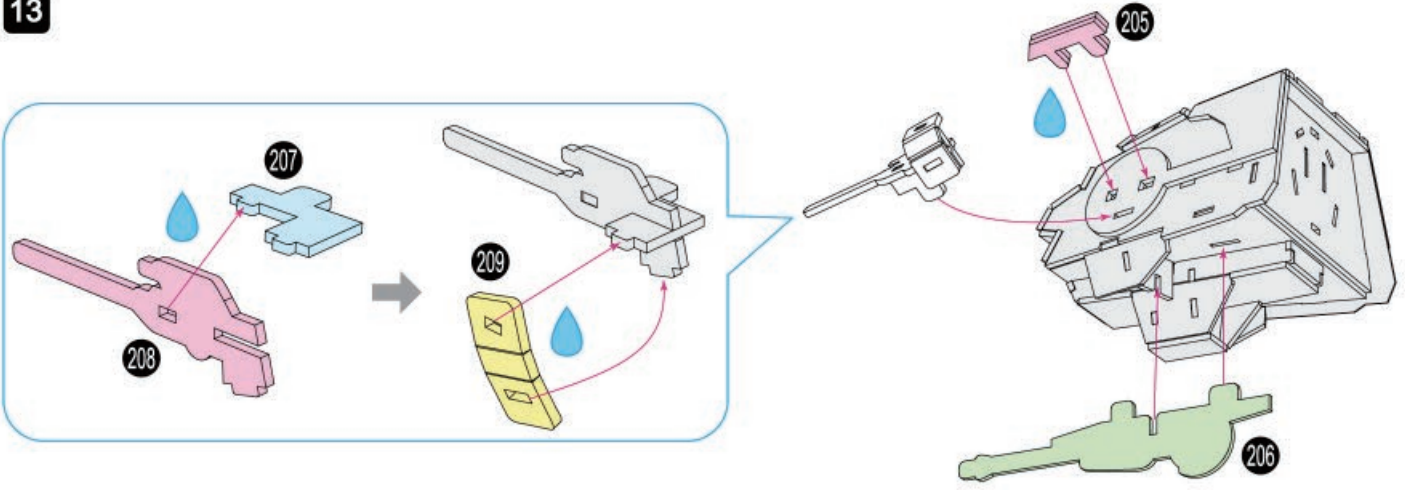


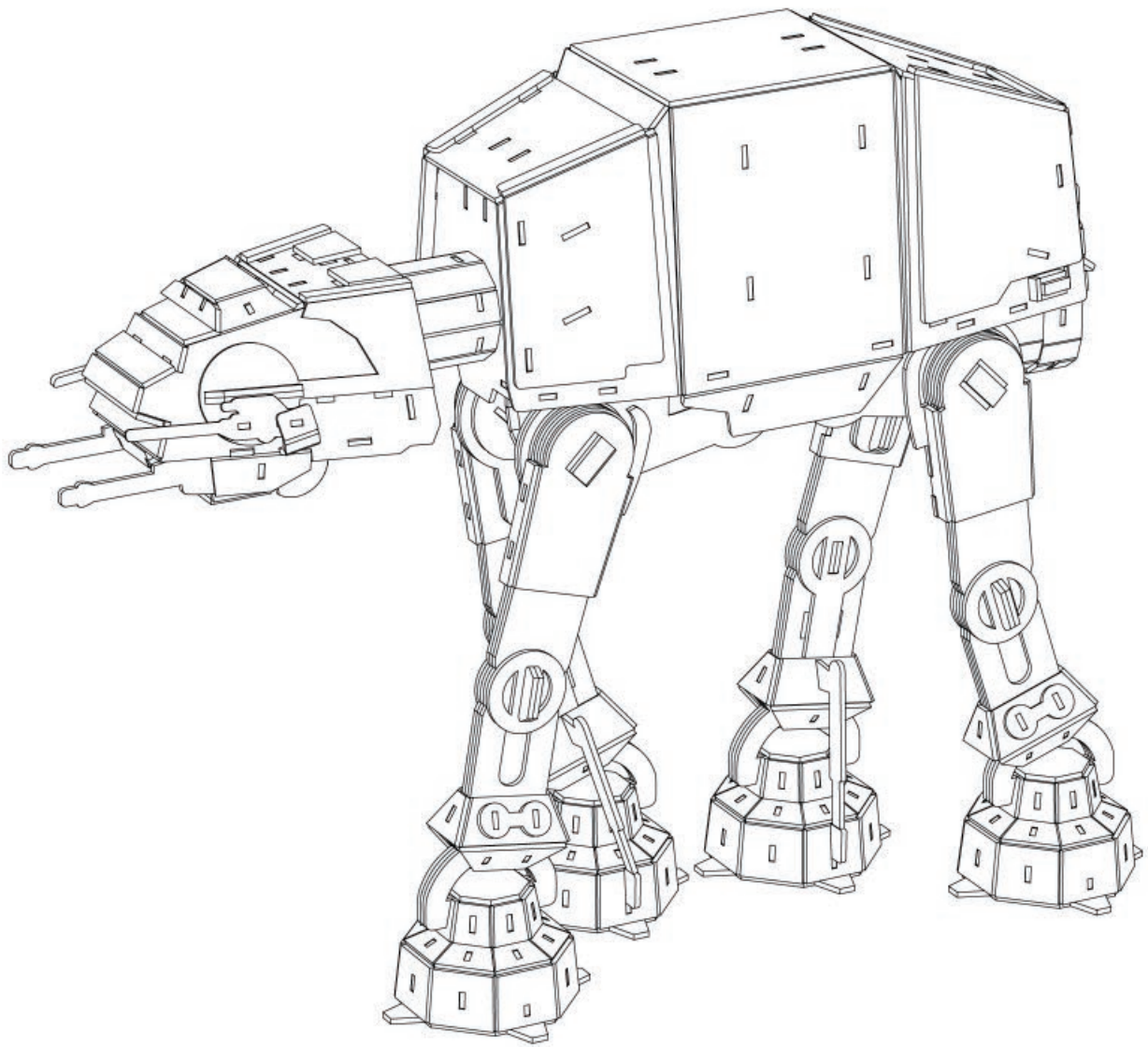














Model glue is required during assembly.
Drip icon identifies areas where glue is applied.

Colle pour modèle requise durant l'assemblage.
L'icône de goutte identifie où la colle doit être.

Se requiere pegamento para modelismo durante el montaje.
El símbolo de la gota indica donde aplicar el pegamento.



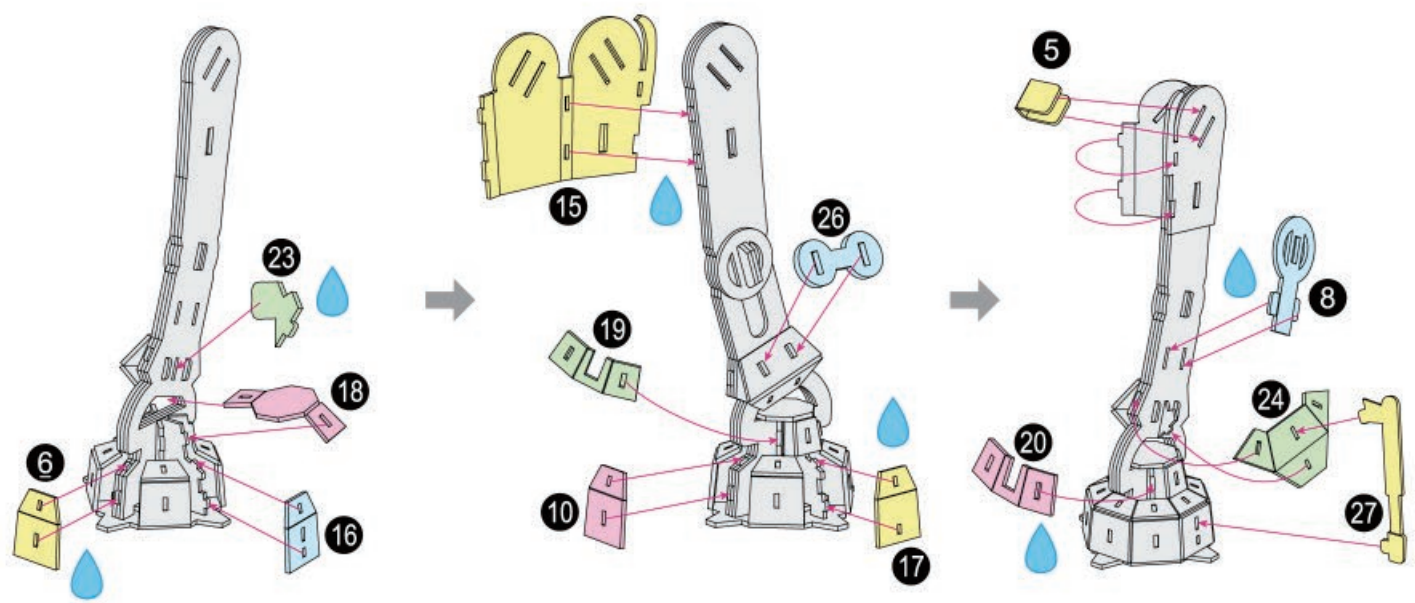
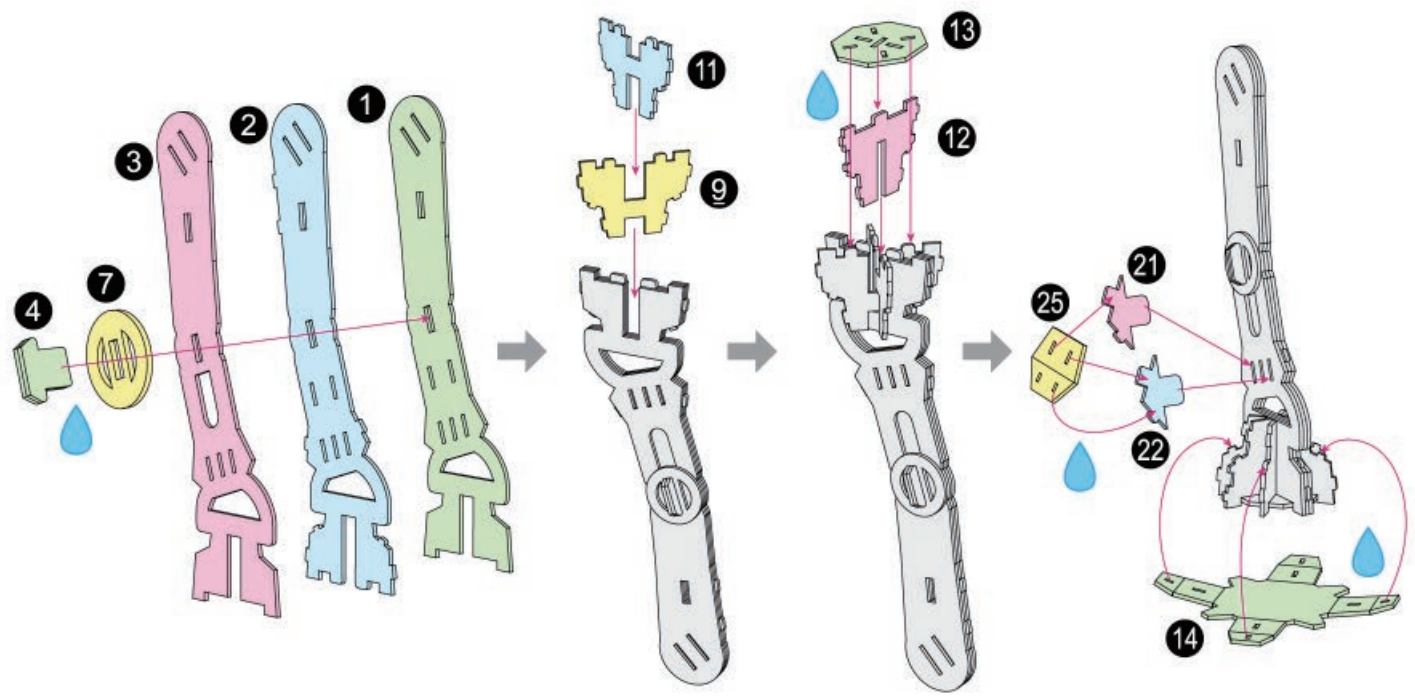
X 2

p 5/10

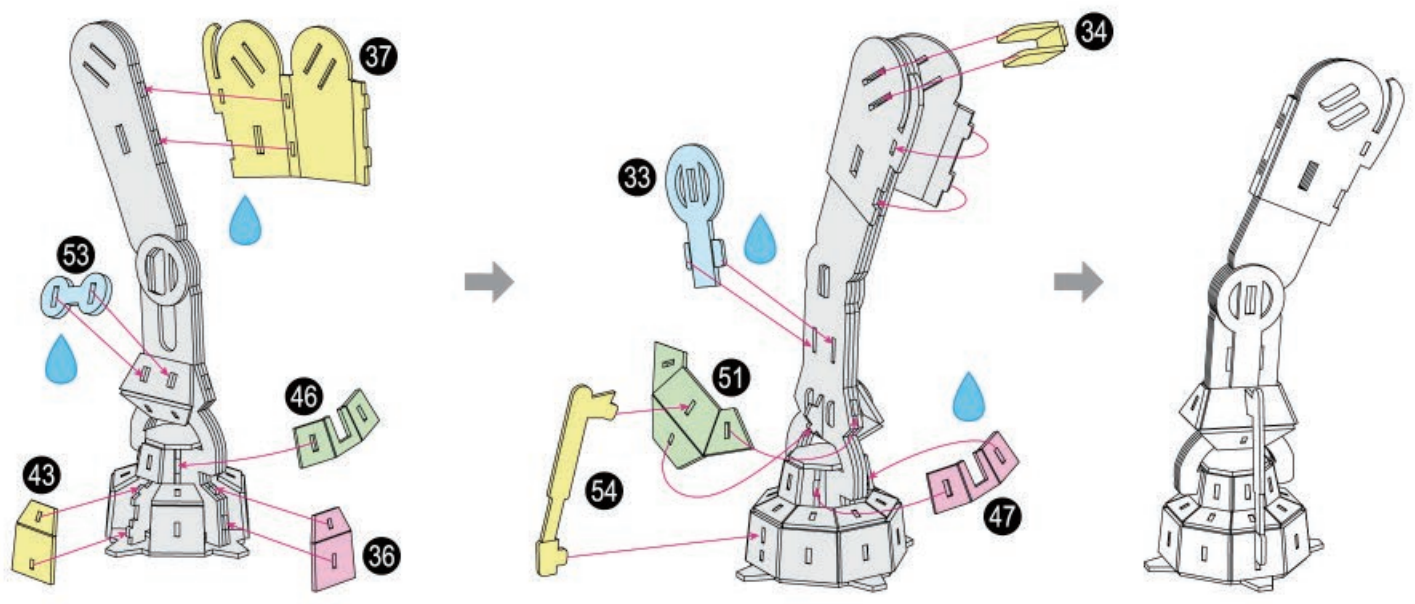
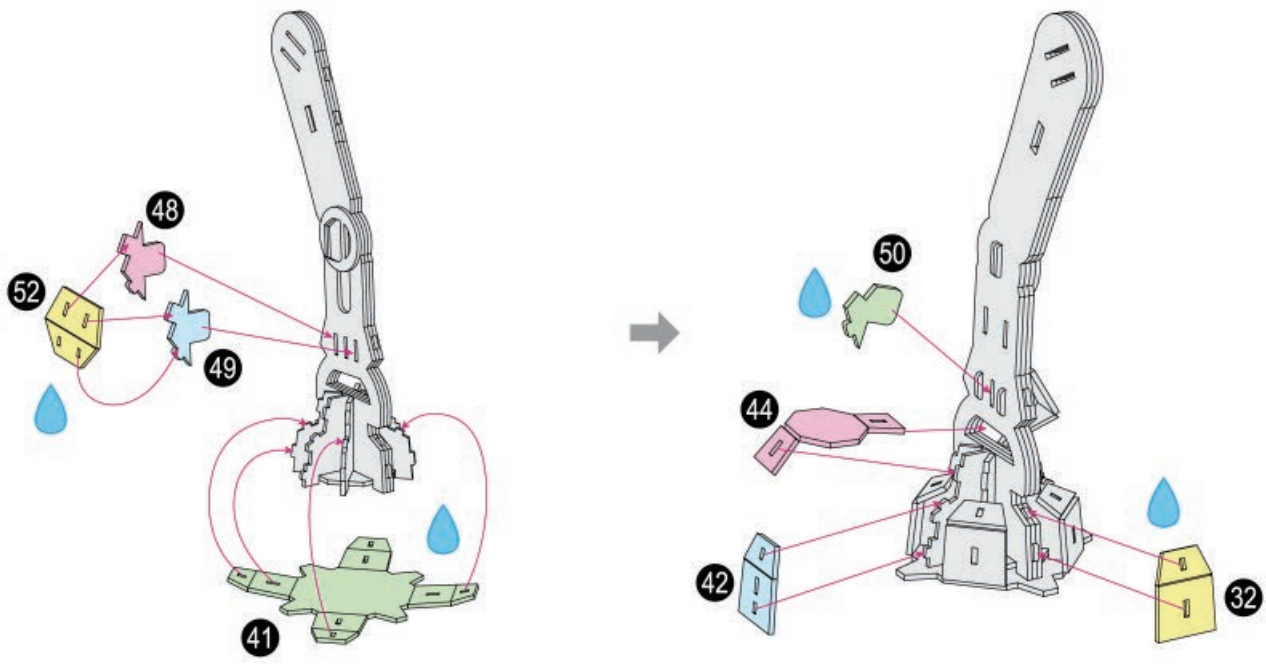
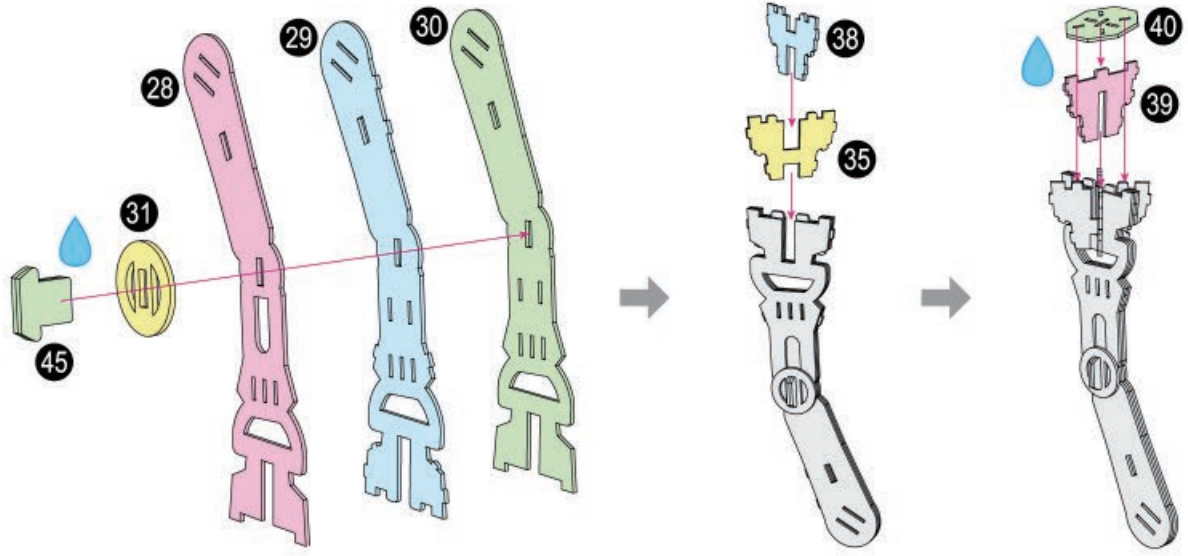


Imperial AT-AT™ 2

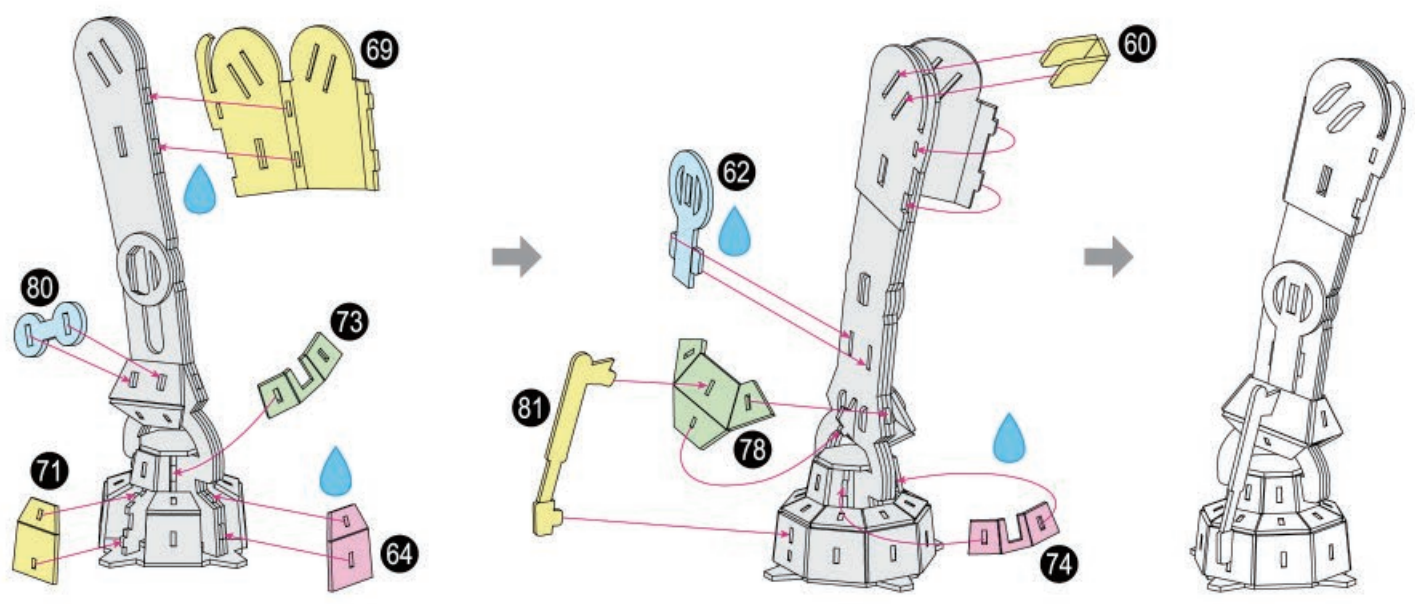
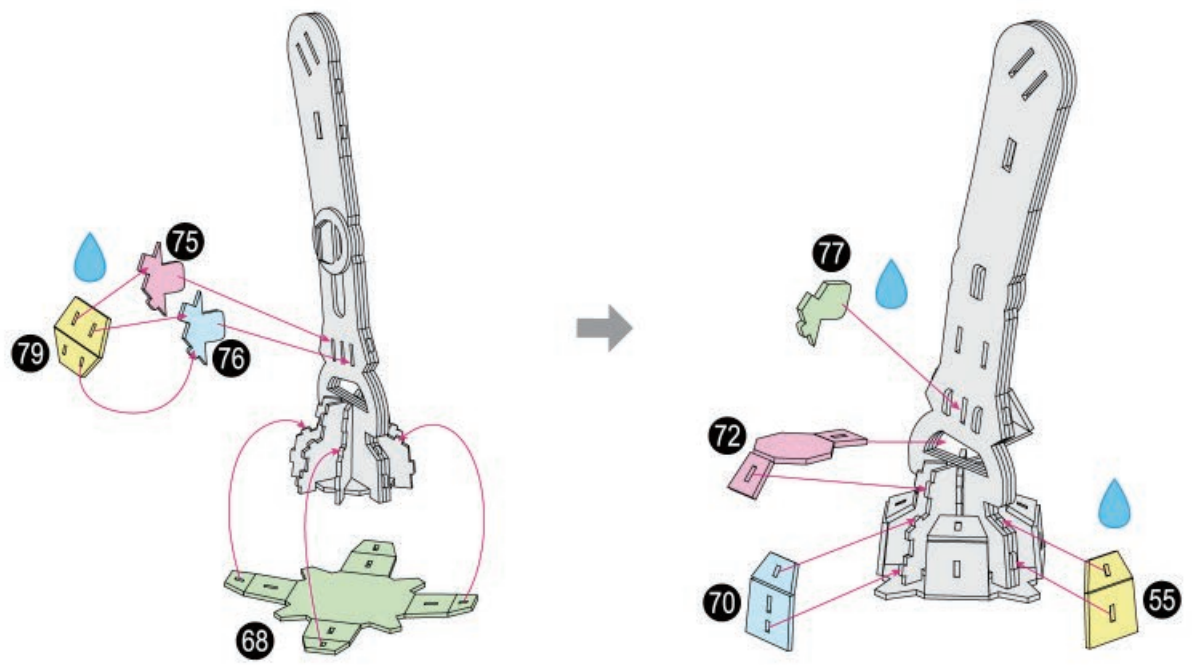
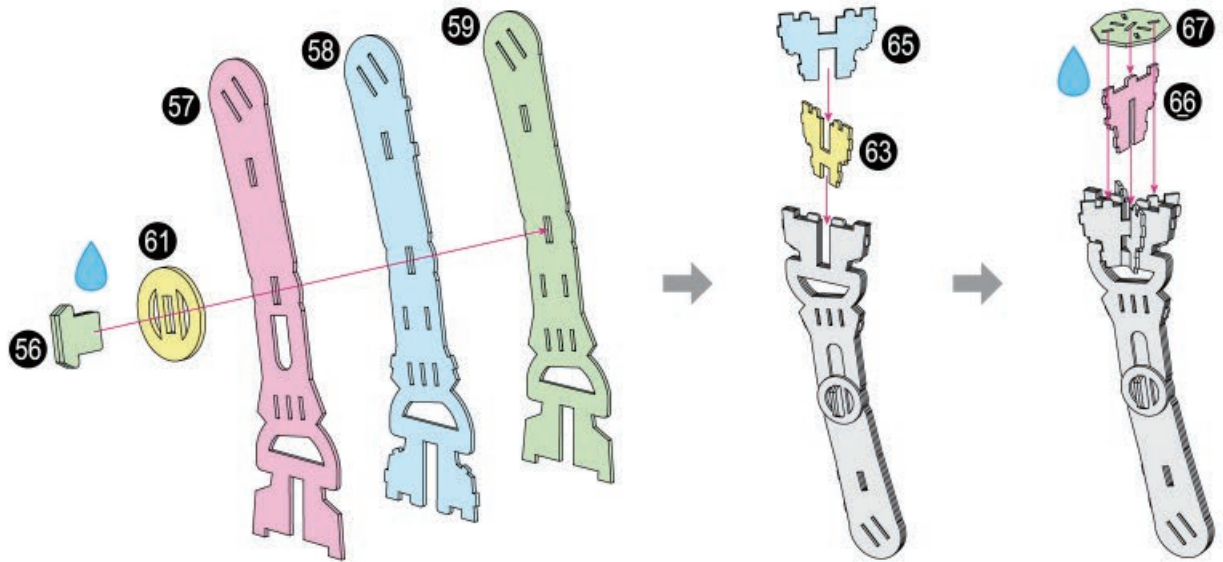
1



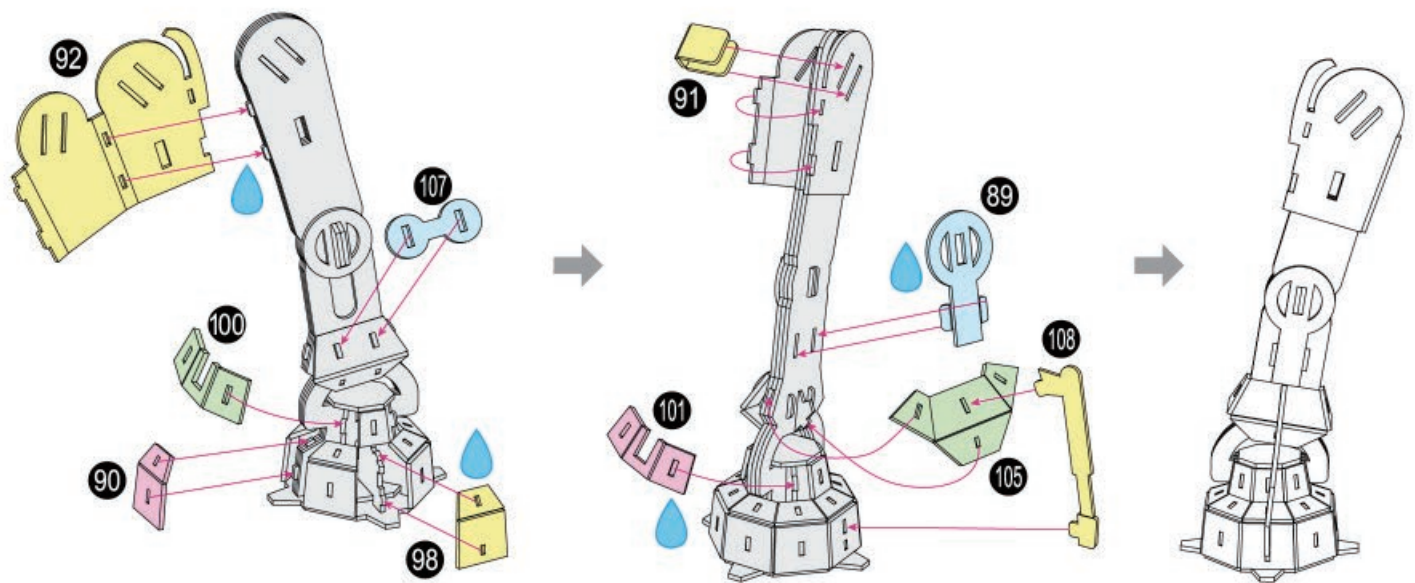
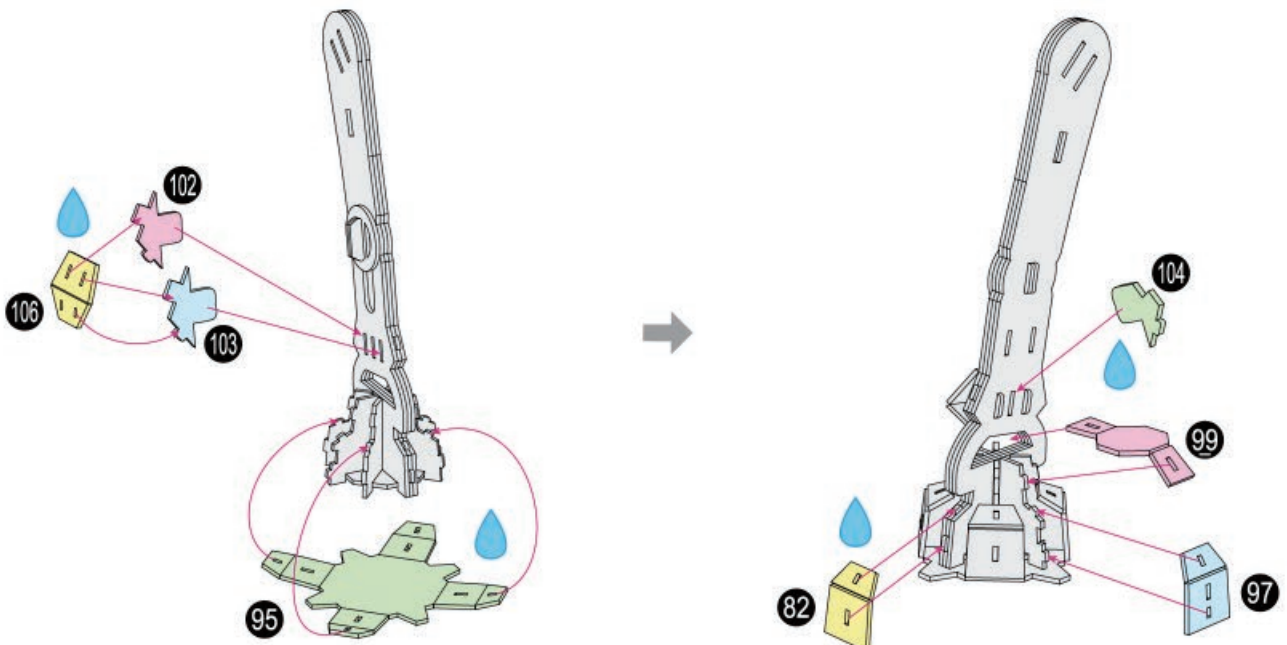
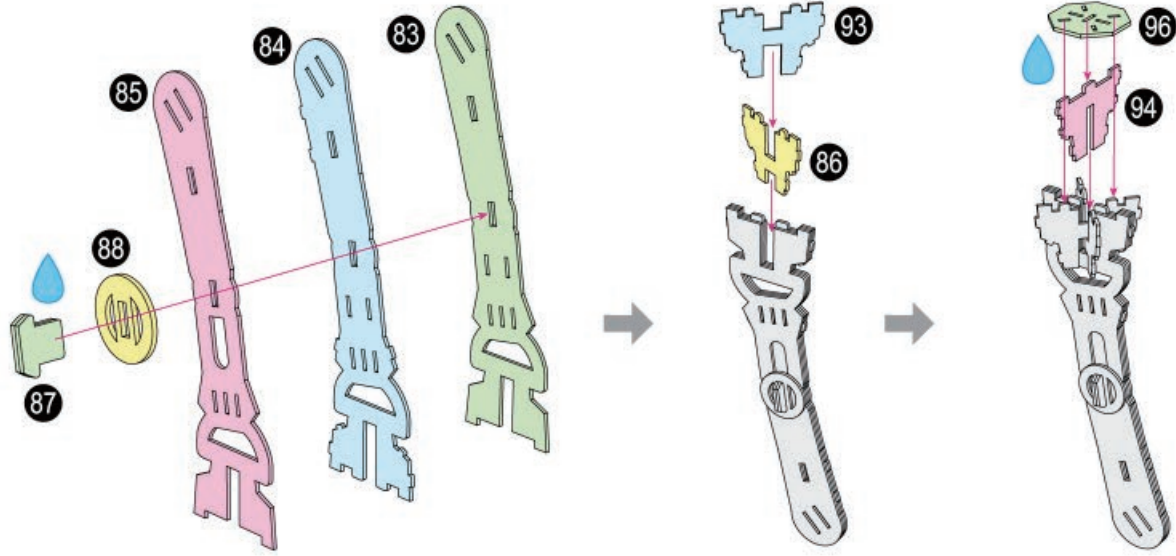
2



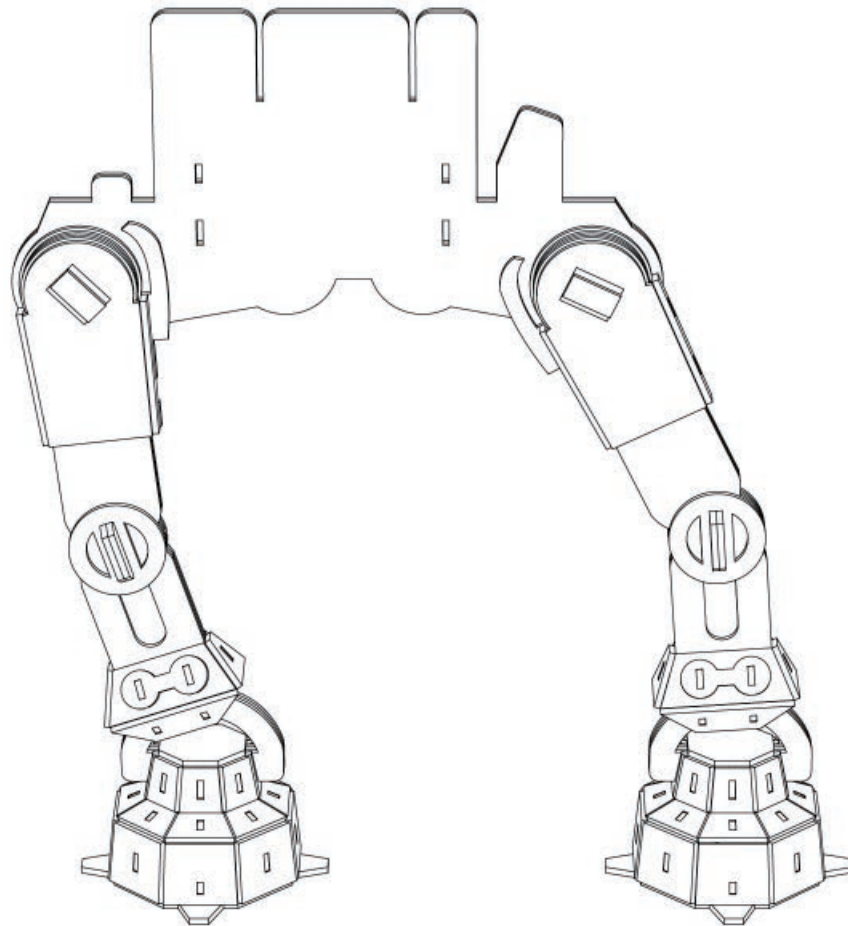
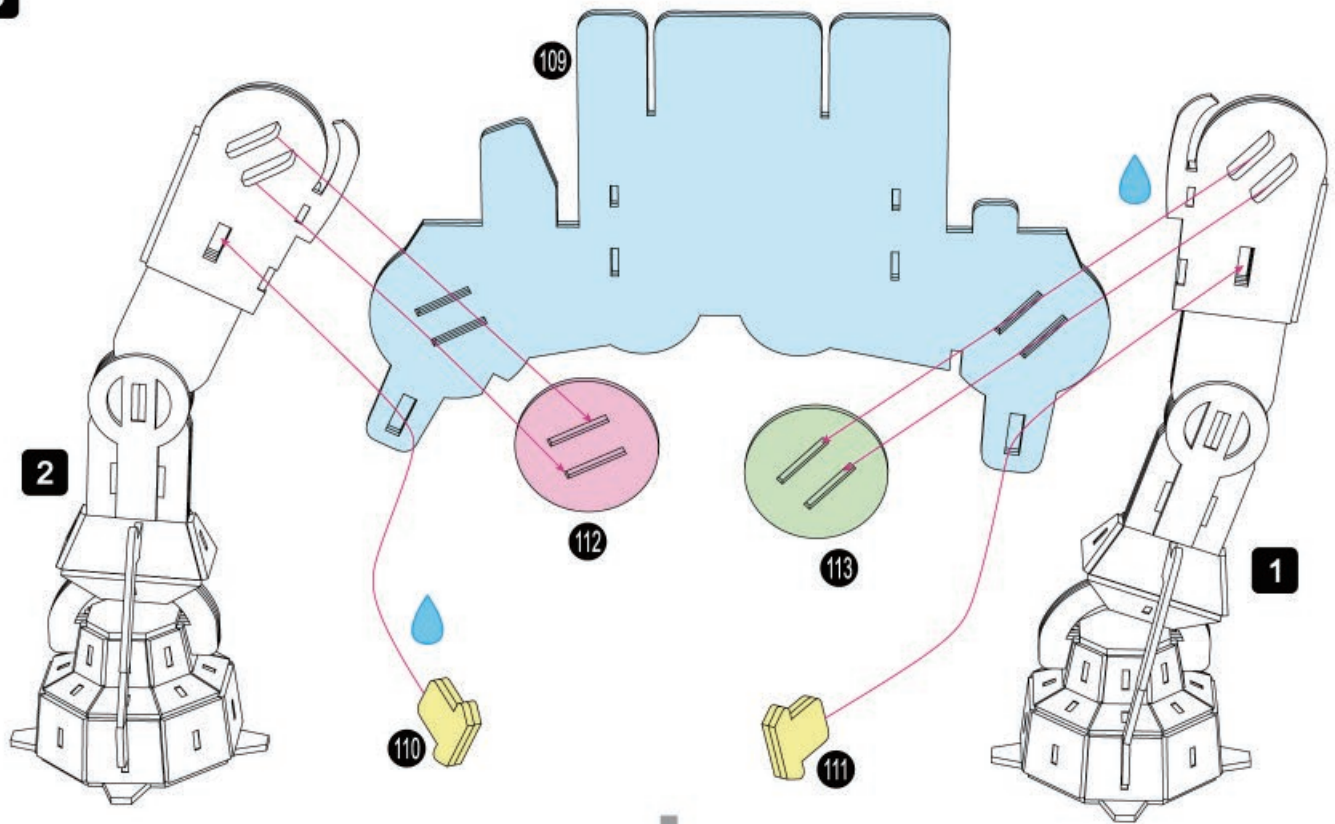
3



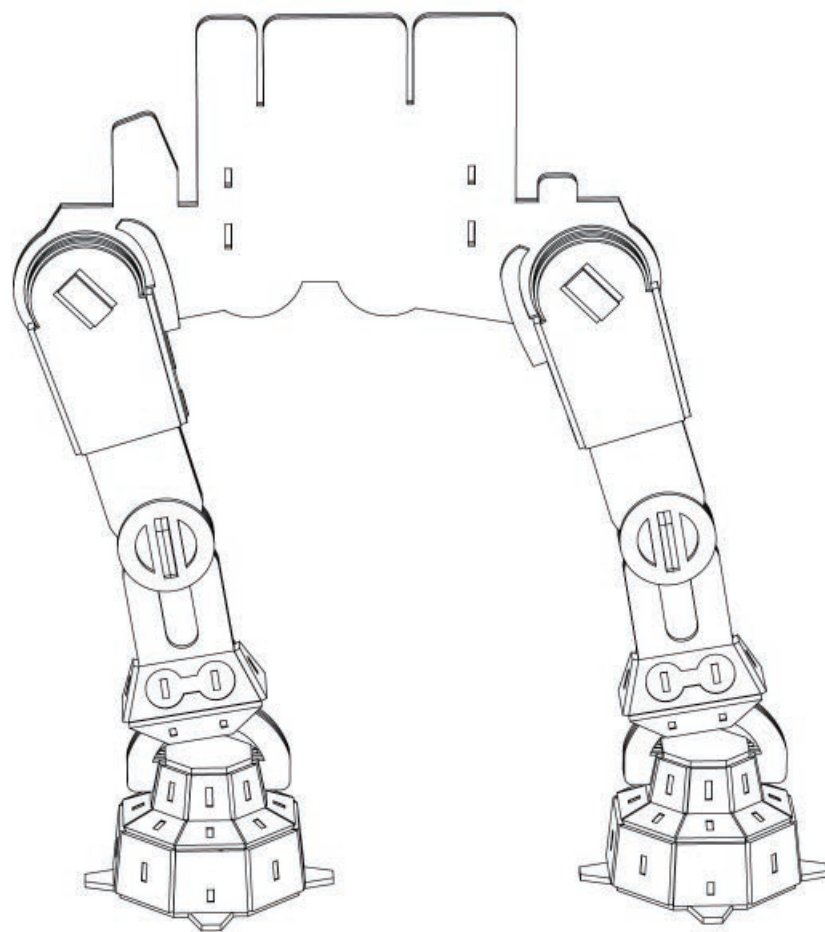
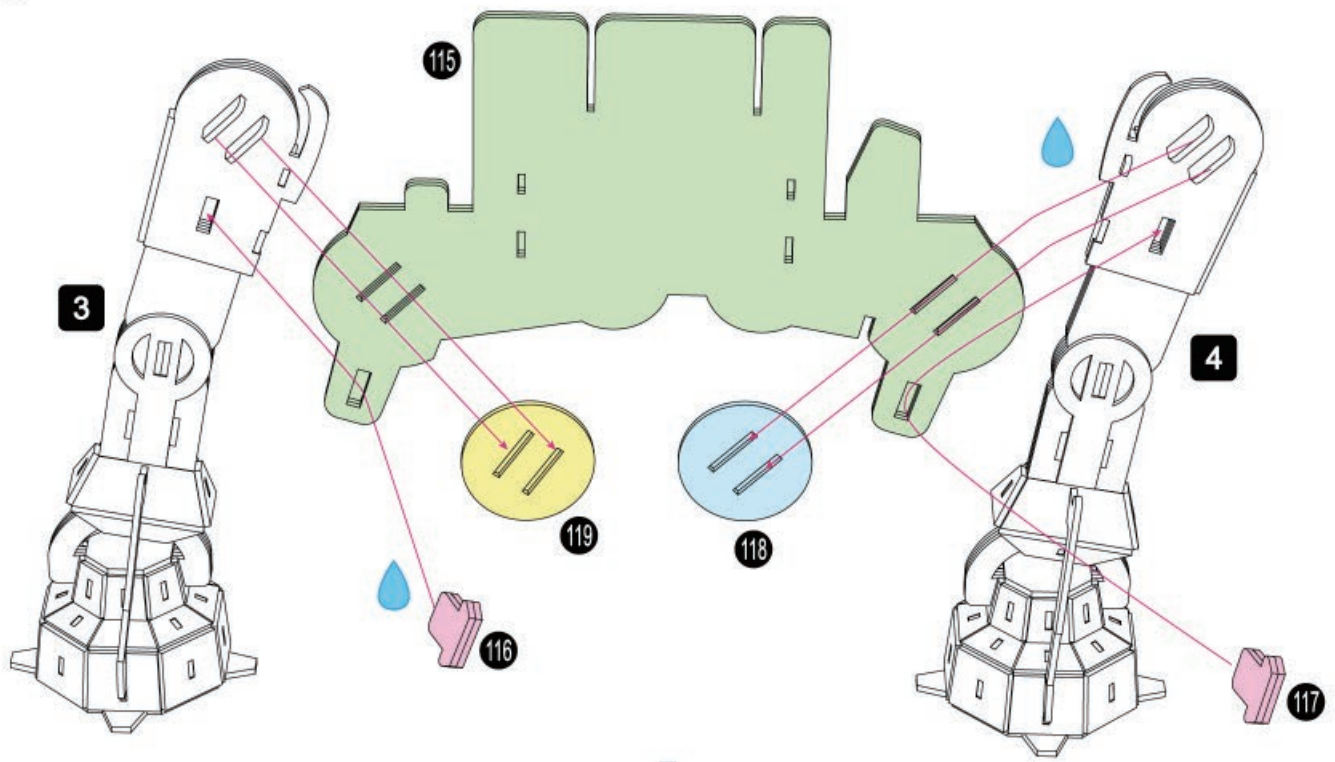
4



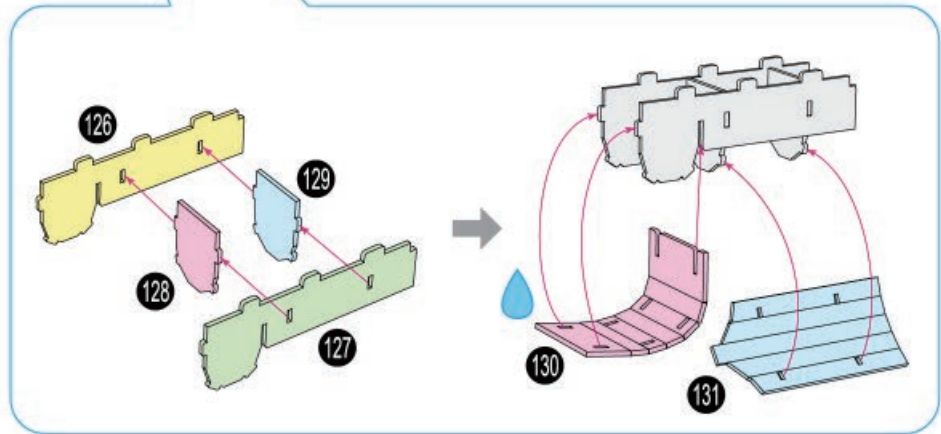
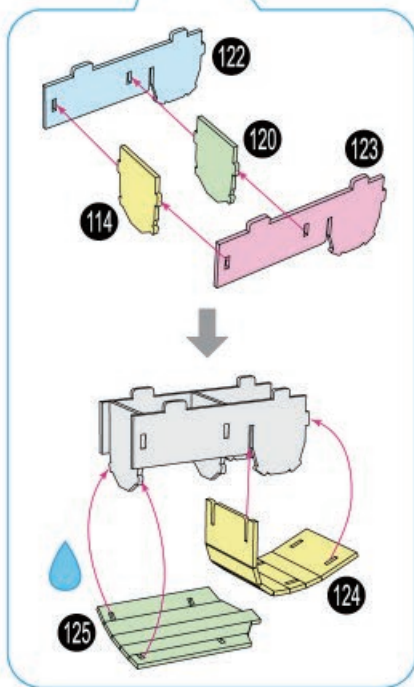
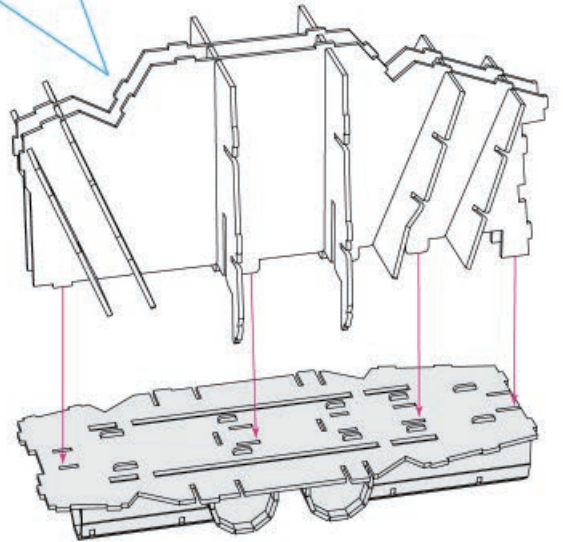
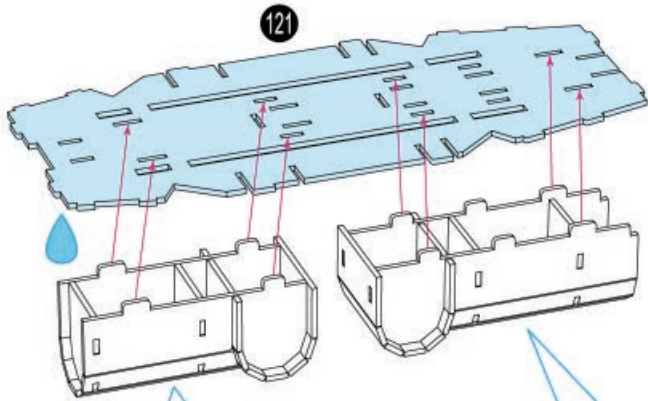
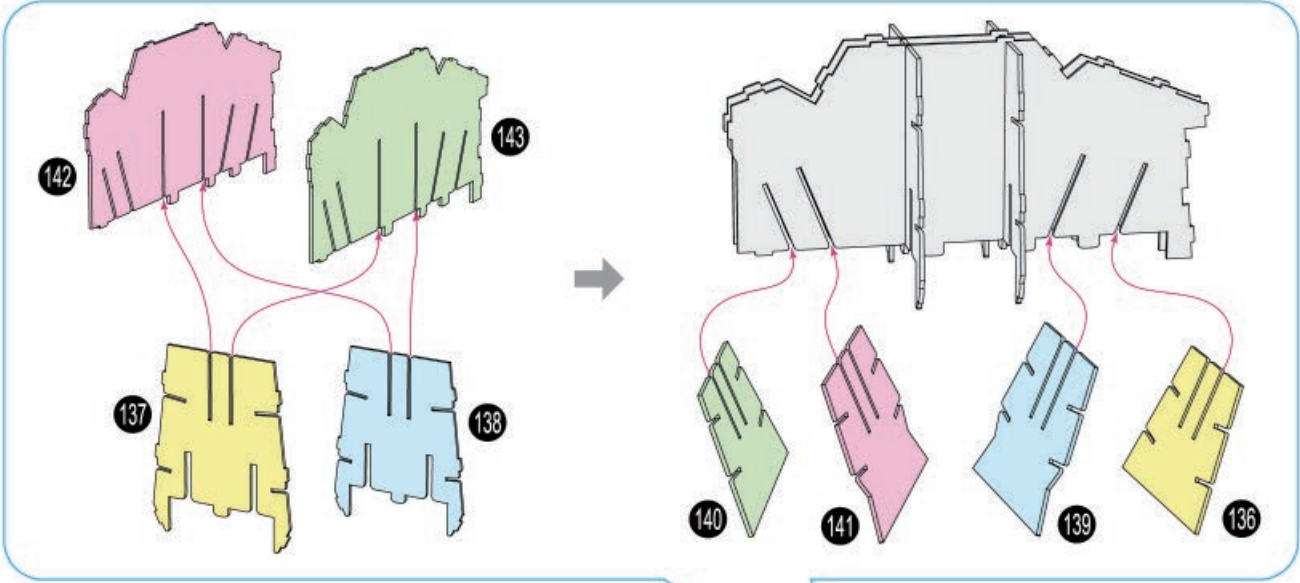
5

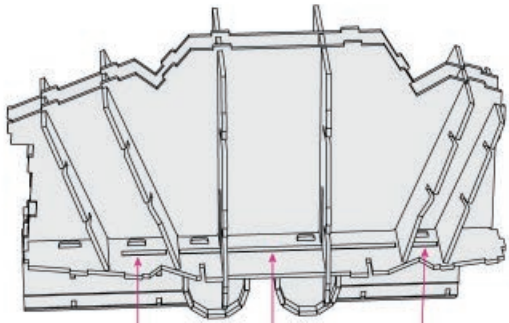


6

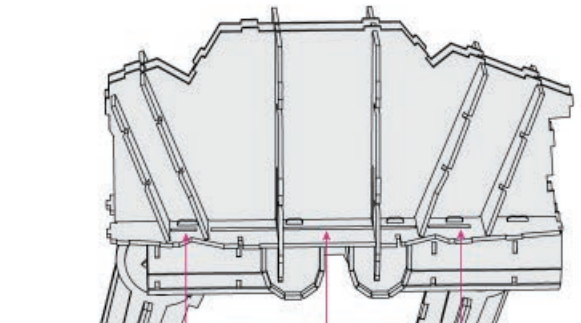
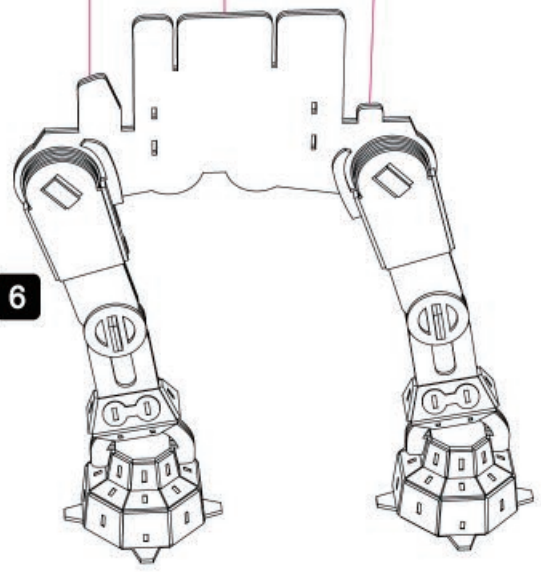


7

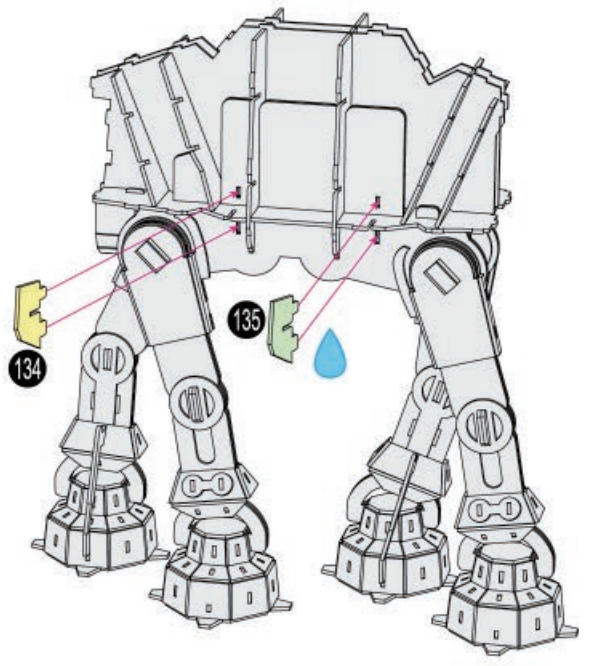
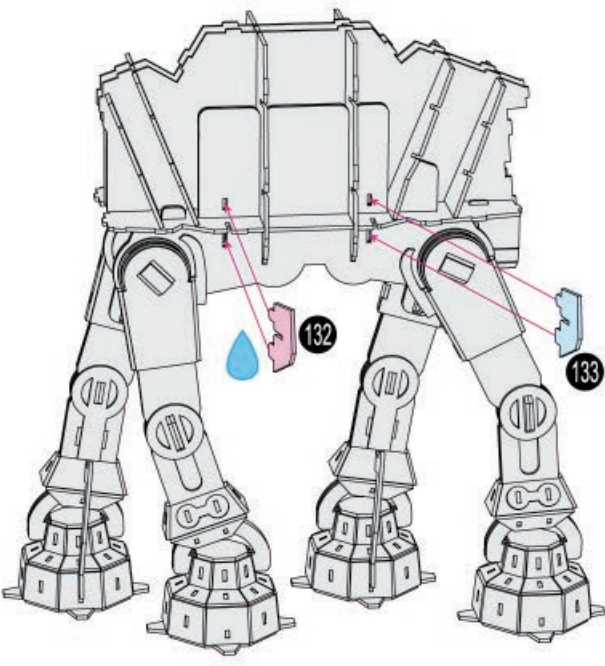
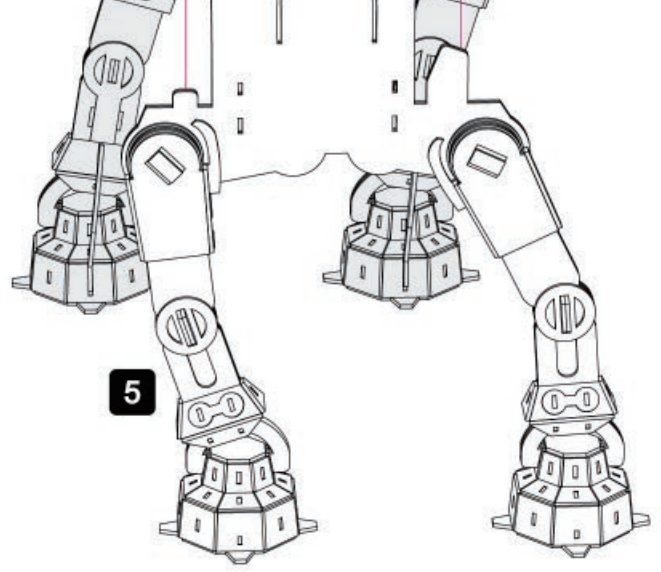


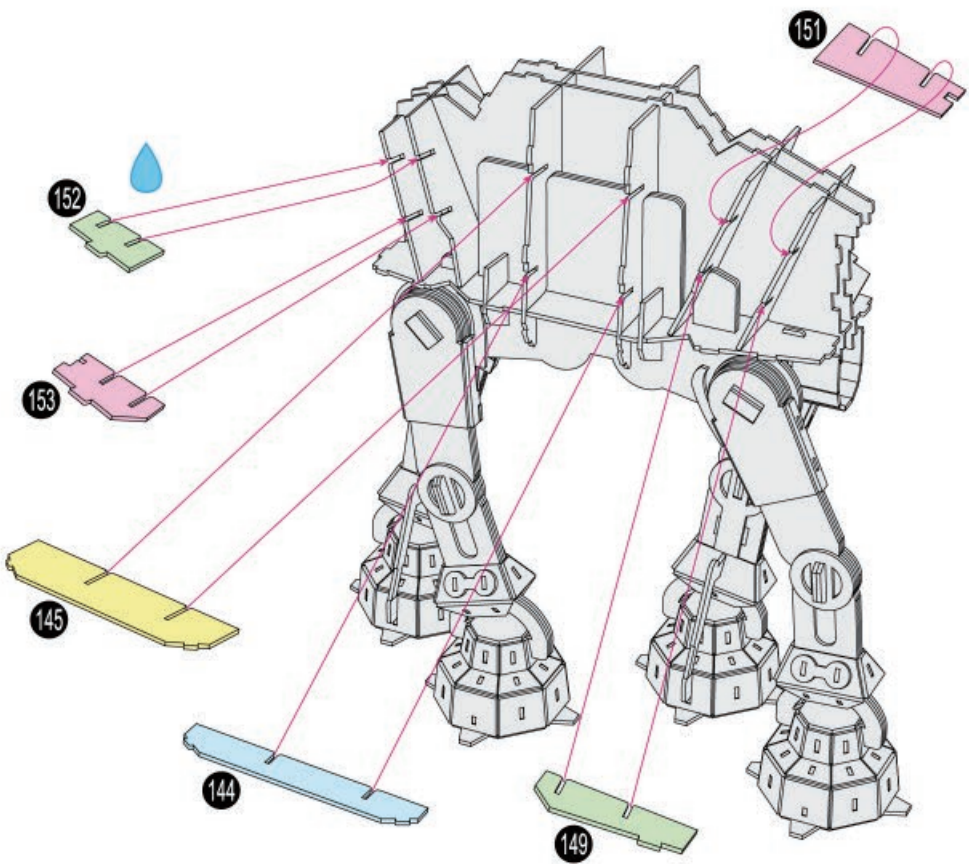
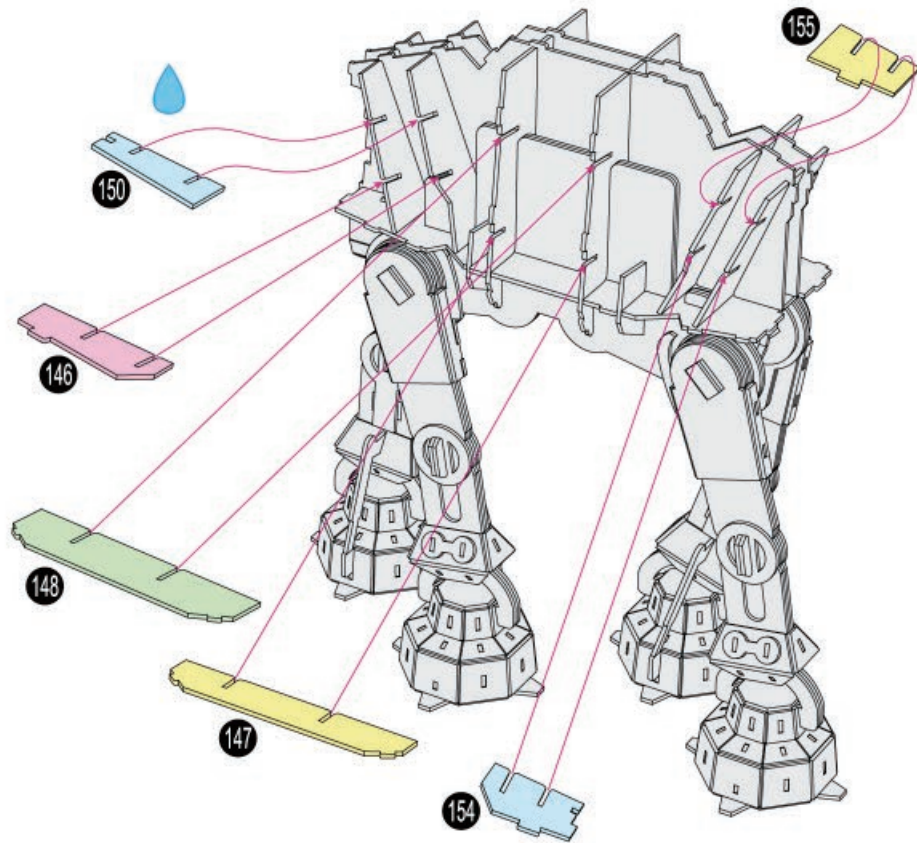


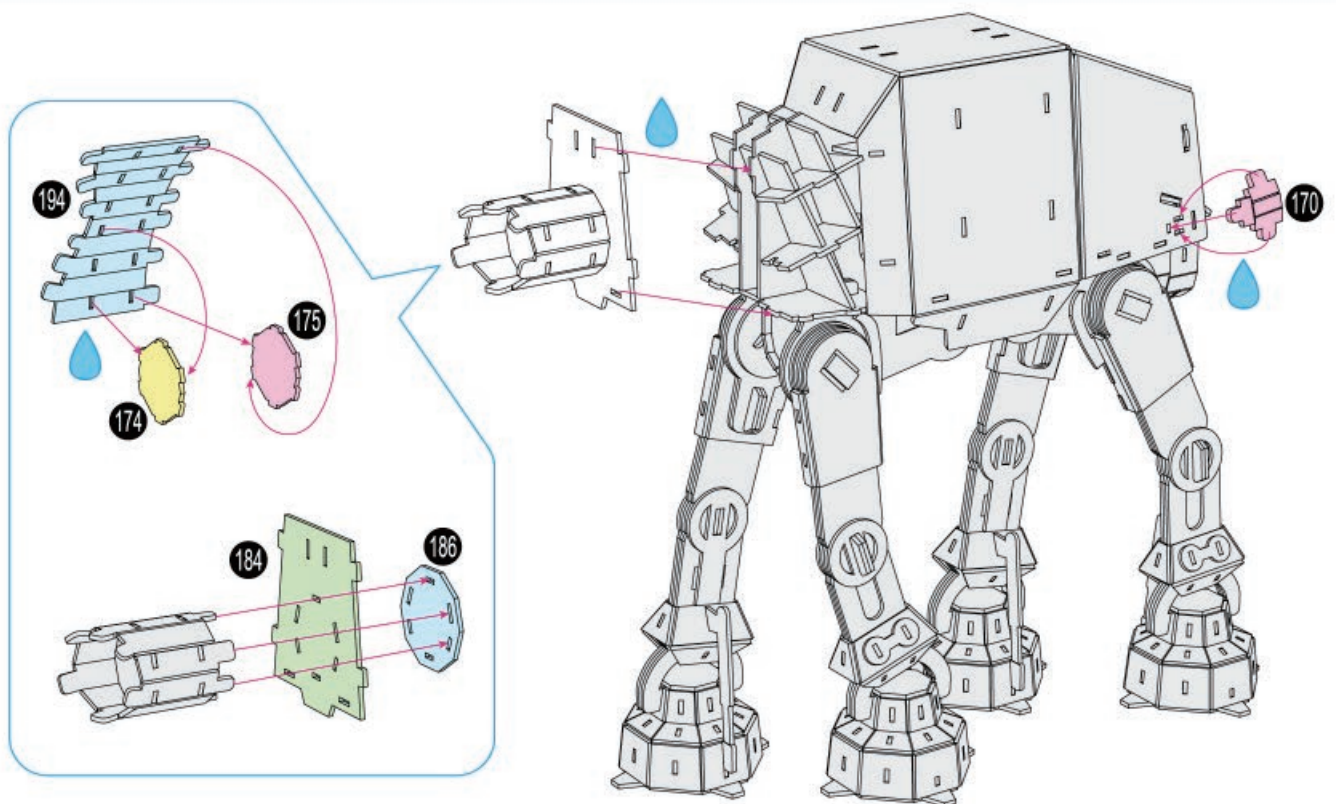
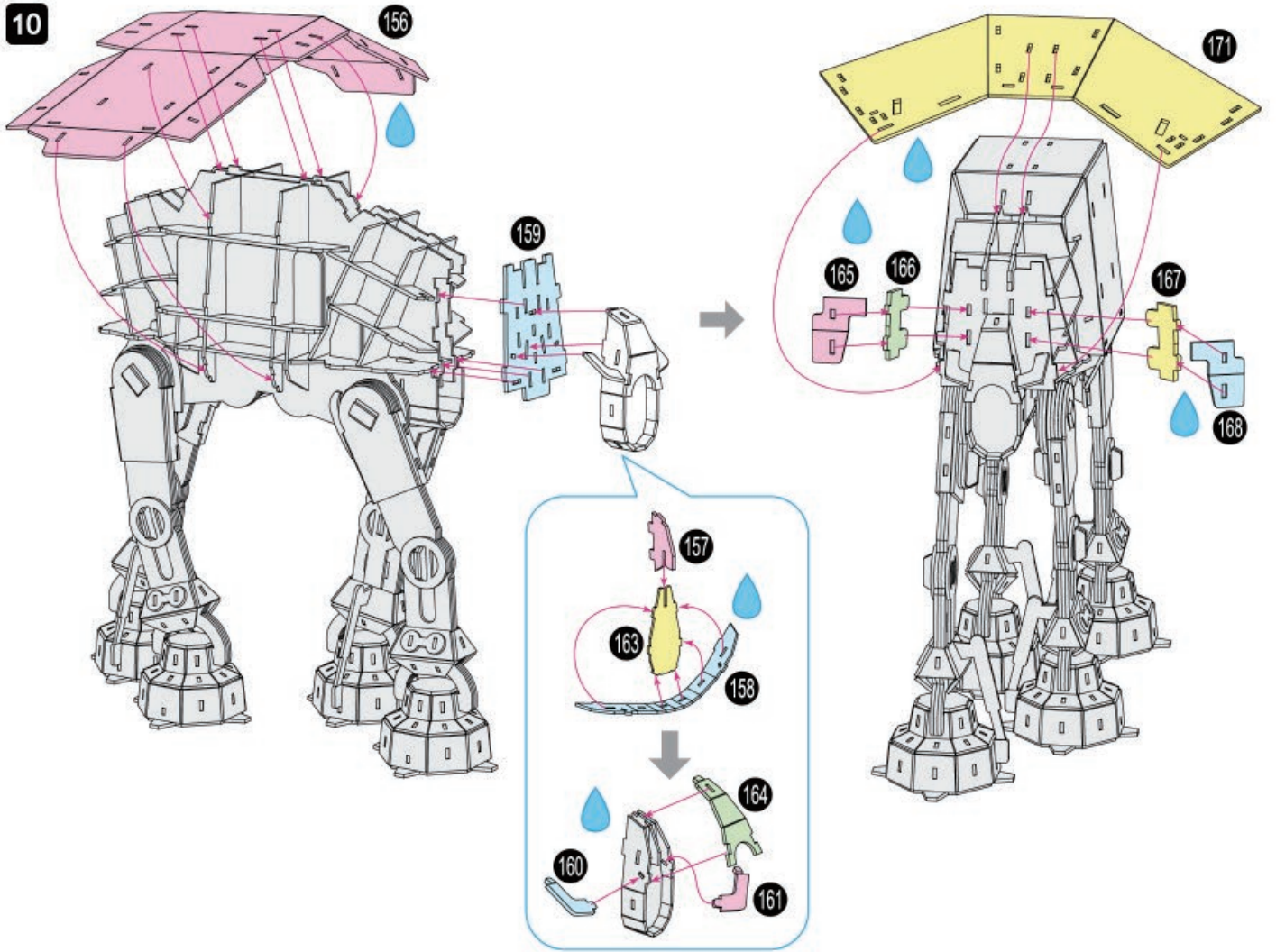
6

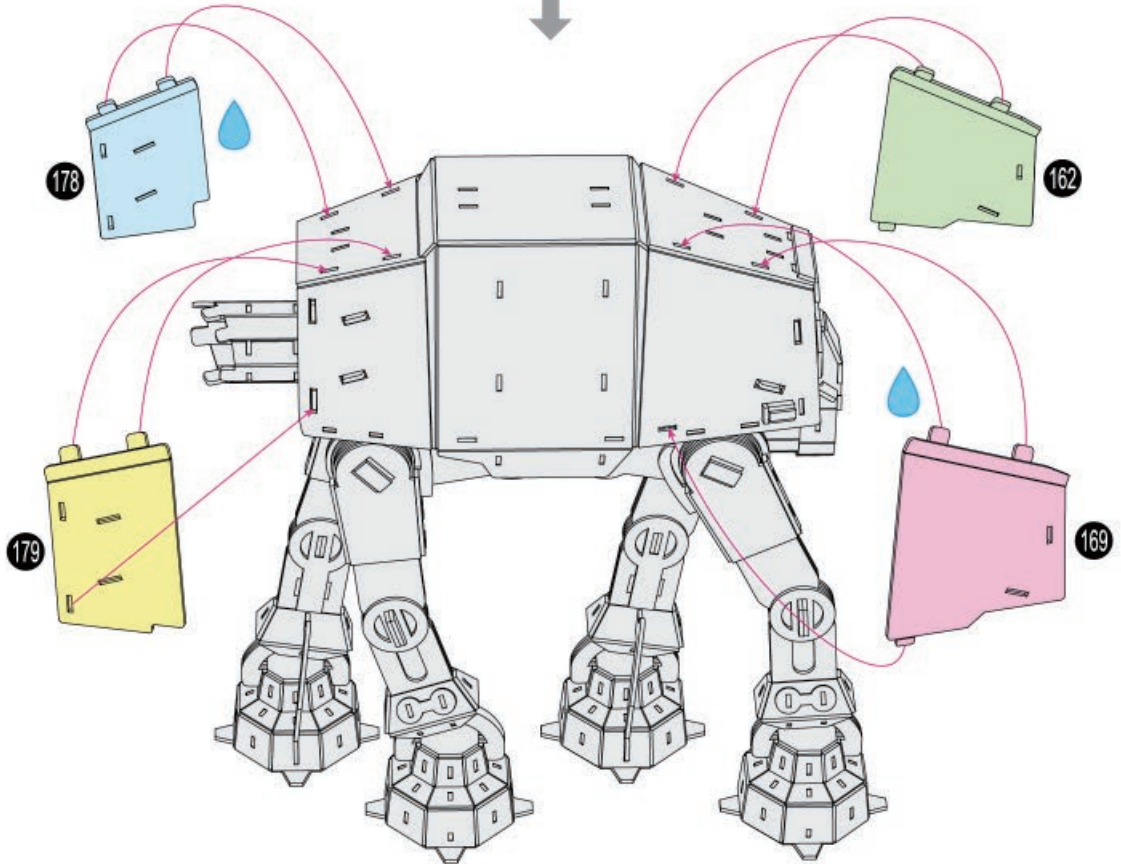
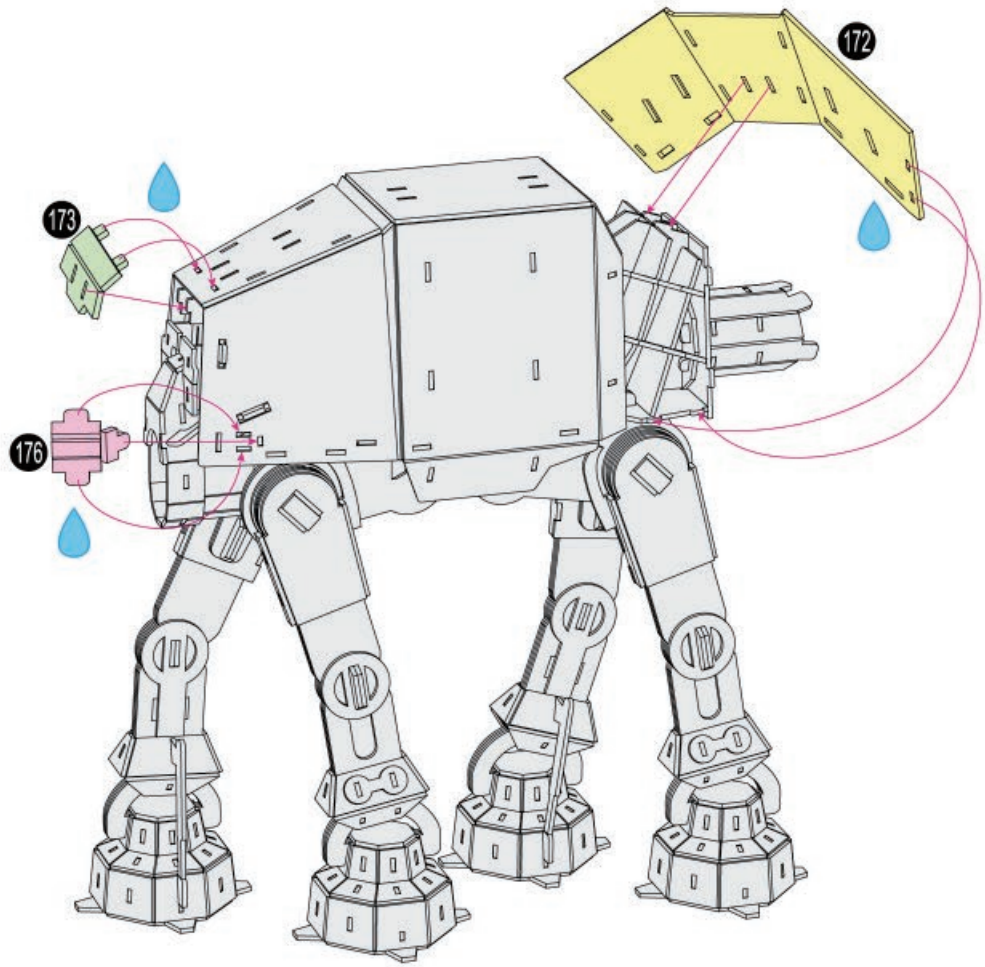


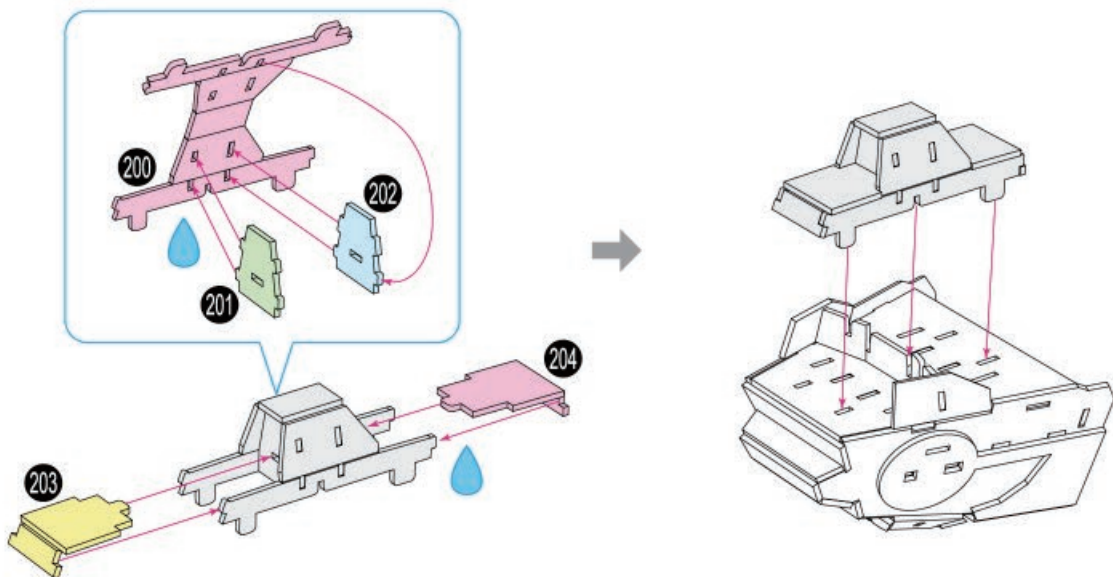
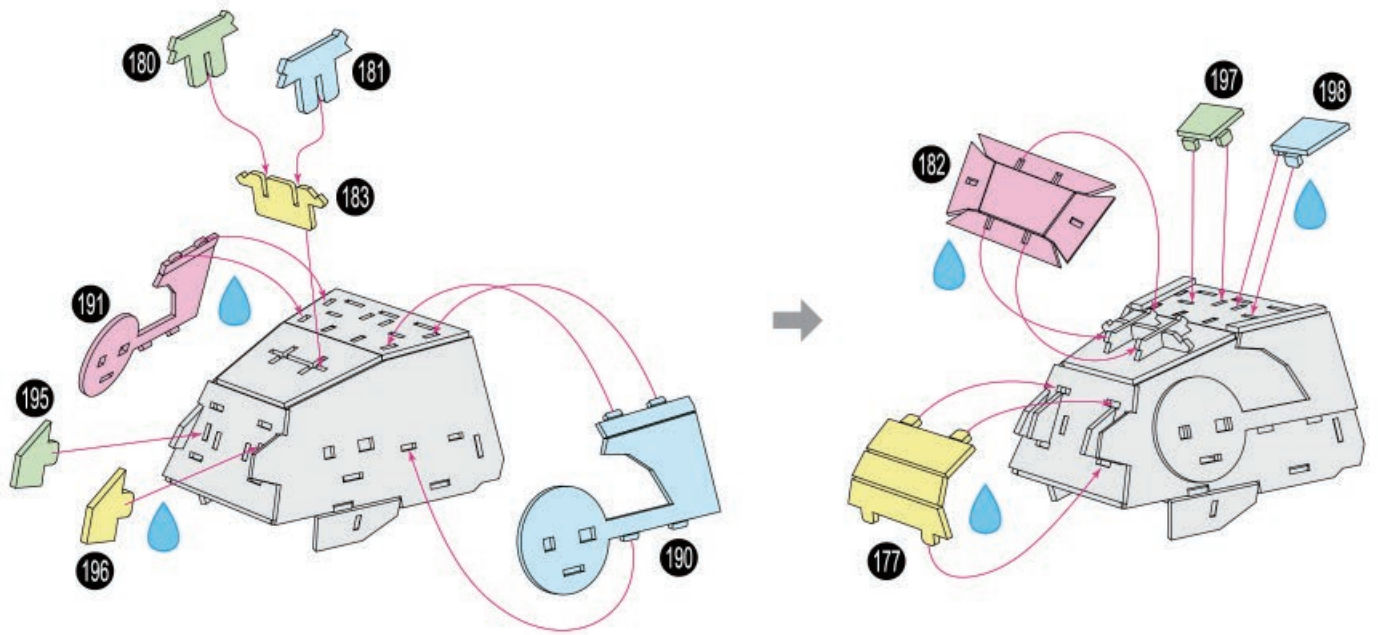
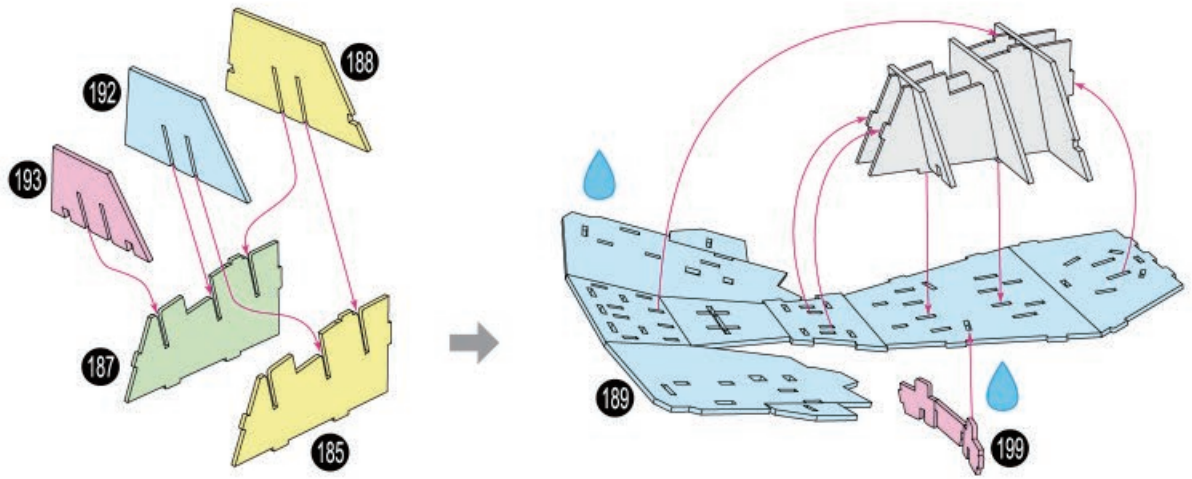
5

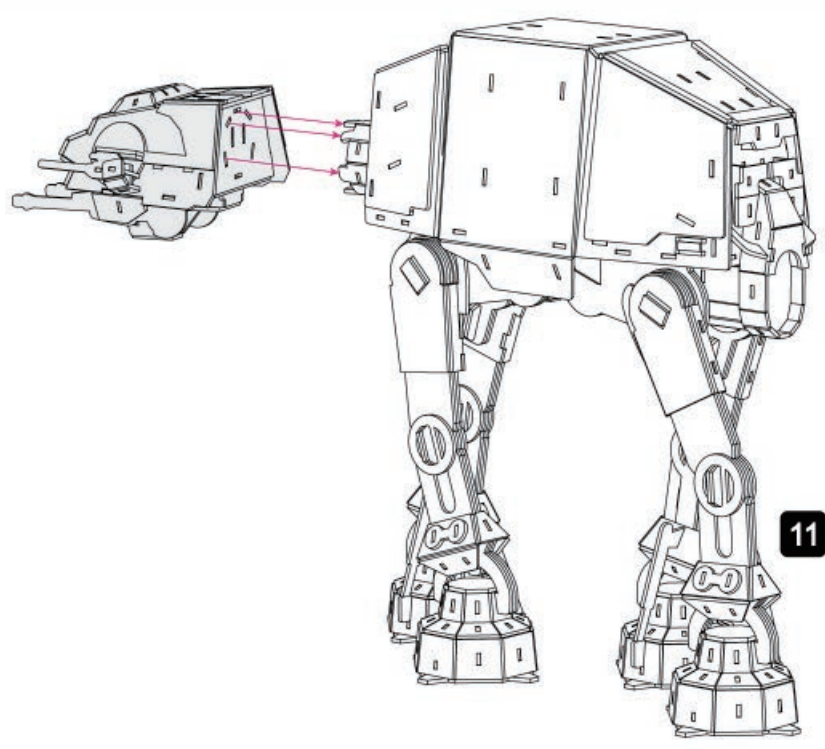
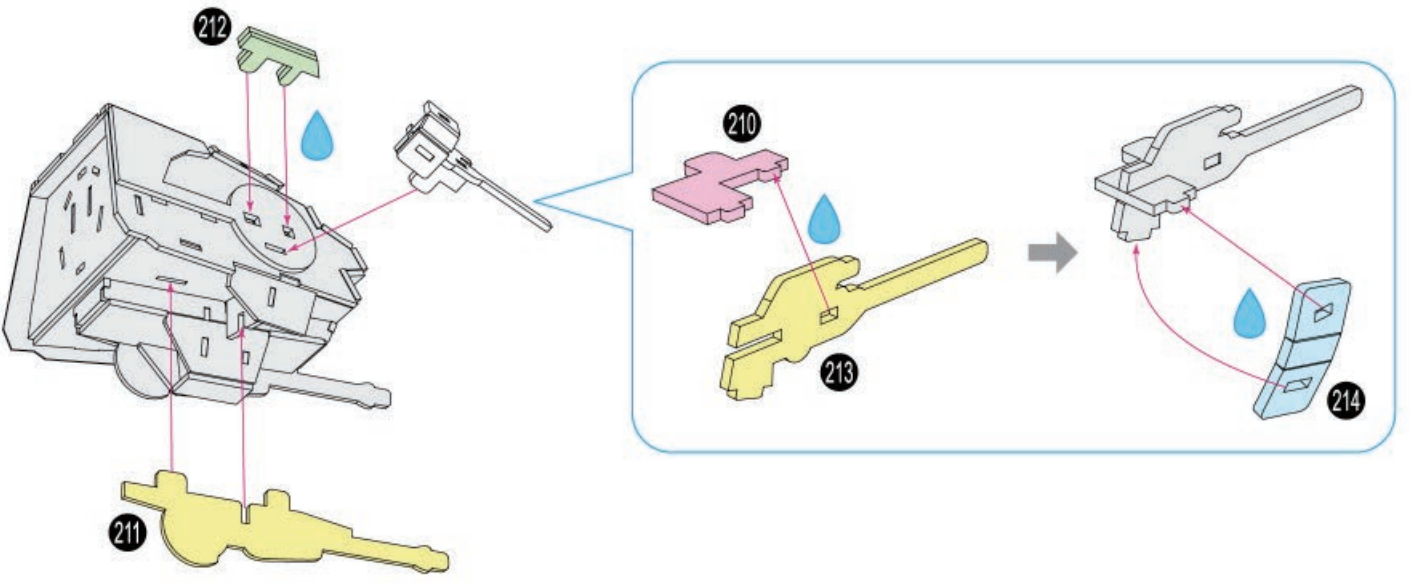
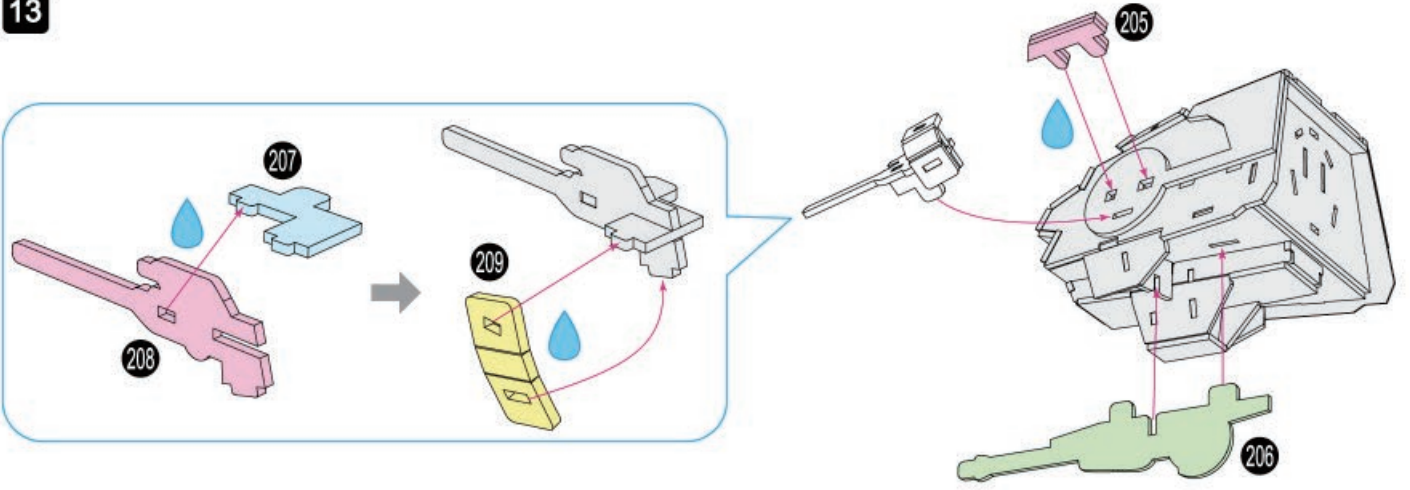


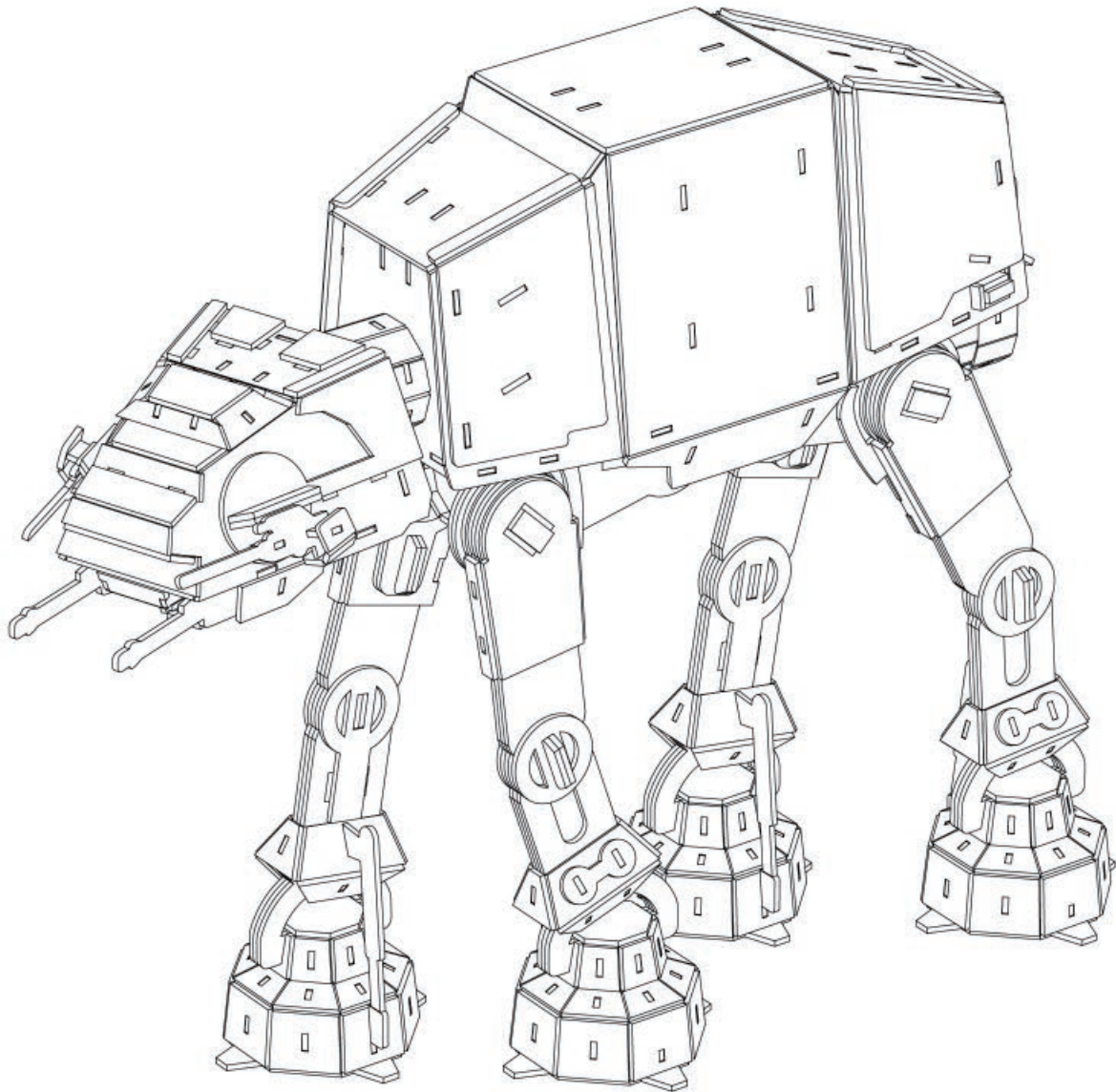












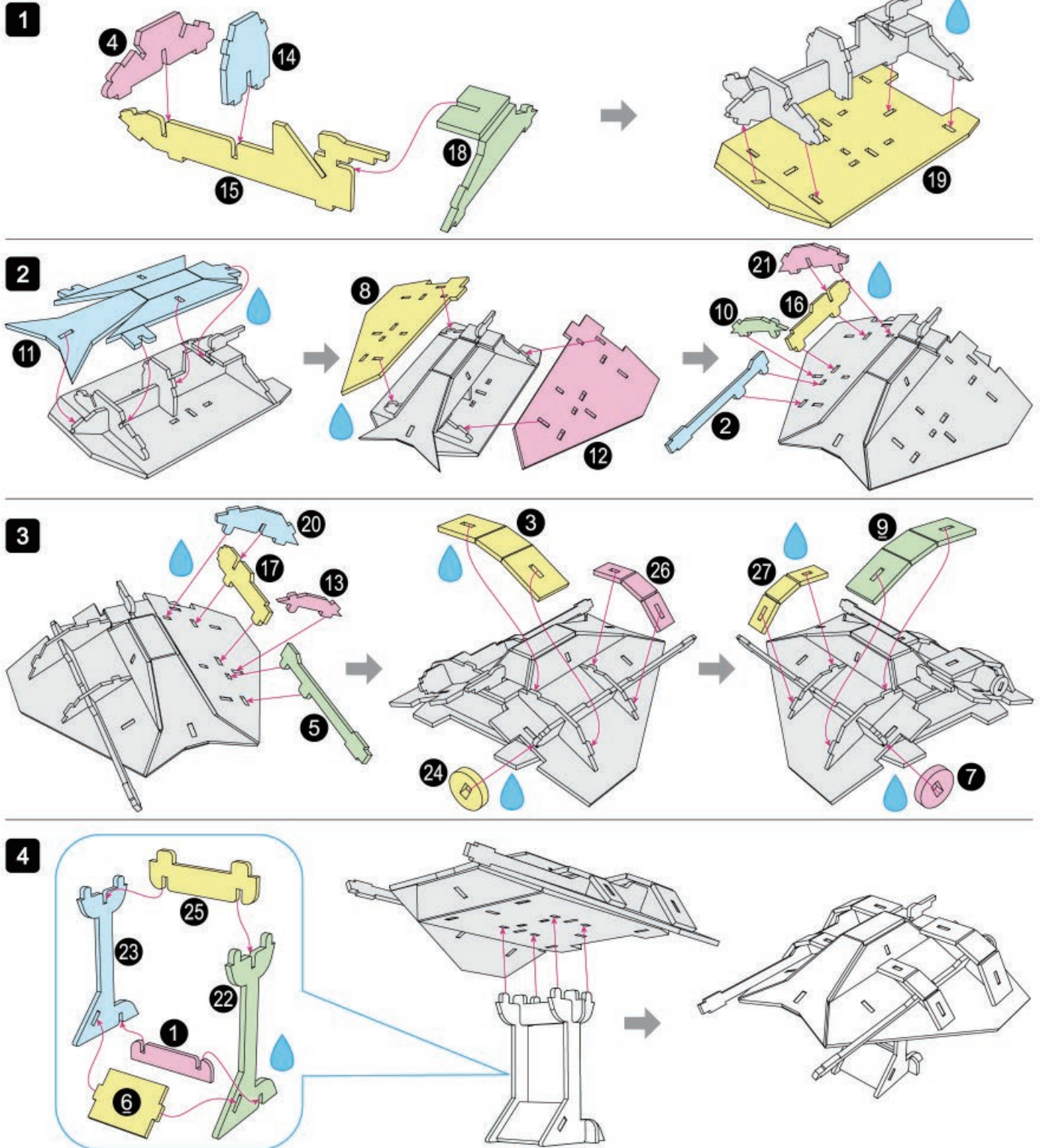


Craft glue required during assembly.
Drip icon identifies where glue is applied.

Colle artisanale est requise lors de l'assemblage.
L'icône de goutte identifie où la colle doit être appliquée.

Se necesita pegamento para manualidades durante el montaje.
El símbolo de la gota indica donde aplicar el pegamento.

Snowspeeder™





Craft glue required during assembly.
Drip icon identifies where glue is applied.

Colle artisanale est requise lors de l'assemblage.
L'icône de goutte identifie où la colle doit être appliquée.

Se necesita pegamento para manualidades durante el montaje.
El símbolo de la gota indica donde aplicar el pegamento.

AT-ST Walker™

