

Product Code	Main channel pipework Ø (mm)	Side Inlets Ø (mm)	Overall Depth A (mm)	Inlet Invert B (mm)	Soffit Depth C (mm)	Approx. Weight (kg)
AIC225450TB - Base only	225	2 x 225	585	540	315	8
AIC225450T1SP	225	2 x 225	1020	975	750	20
AIC225450T15SP	225	2 x 225	1530	1485	1260	25
AIC225450T20SP	225	2 x 225	2000	1955	1730	30
AIC225450T24SP	225	2 x 225	2410	2365	2140	35
AIC225450T30SP	225	2 x 225	2975	2930	2705	41

Please Note:

- Pipe seals are not provided with these chambers. Specific pipe seals from manufacture must be used.
- Chambers deeper than 1000mm to soffit of pipework, require a Restriction Cap 450RCC to comply with DCG.

450 SERIES

INSPECTION CHAMBER FOUL & SURFACE WATER SYSTEMS

Ø450mm - Factory built inspection chambers, delivered to site as single piece units, ready to install, with no assembly required.

All chambers feature a durable, impact resistant, rola moulded base, which has the unique ability to connect to three different Ø225mm structured pipe systems - UltraRib, Polysewer and Marley Quantum.



The base has a Ø225mm main channel, which is supplied open (as shown opposite). There are two further Ø225mm side connections, which have blind ends, that can be cut off for use on site, if required.

APPLICATION

- Above ground access for inspection and maintenance of foul & surface water pipe systems
- Suitable for Adoptable and Non-Adoptable applications
- Maximum installation depth to soffit of pipe - Adoptable 3000mm and Non-Adoptable 3000mm

COMPLIANCE

- Design & Construction Guidance (DCG) - Type D & E Chambers

FEATURES

- Unique base design that accepts 3 different Ø225mm structured pipe systems - UltraRib, Polysewer & Marley Quantum
- Reducers are available to connect to 150mm UltraRib, Polysewer & Marley Quantum, plus 160mm EN1401 single wall pipe
- Rota Moulded LLDPE base - chemical and impact resistant
- Base and five standard depths available
- Stepped base - 60mm step from side to main channel, to meet DCG requirement for Adoptable Sewers
- Restriction Cap available to reduce access to Ø350mm to comply with DCG - Design & Construction Guidelines for deeper chambers
- Access shafts are easily cut onsite to required depth
- Chambers can be installed in granular backfill

REDUCERS

There are three reducers available for reduction to Ø150mm from all of the 3 specific 225mm structured pipe systems -

Product code:

PSMQR225150

Reducer to Ø150mm Polysewer & Quantum

URR225150

Reducer to Ø150mm UltraRib

PSMQURR225160

Reducer to Ø160mm EN1401 single wall pipe



ACCESS COVERS

There are two access covers available for these chambers. Both covers are can be handled and installed by a single person.

Product code:

450ACSB

Square section with integral Ø350mm restricted access

Product code:

450ACSB125W

Ø450mm clear opening - square to round - ductile iron access cover.

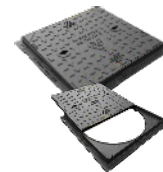
Class BS EN 124-A15, suitable for loading up to 1.5 tonnes

Product Weight - 14kg

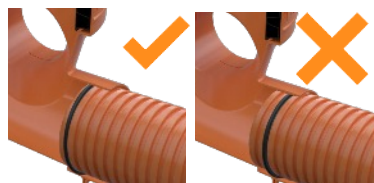
Class BS EN 124-B125, suitable for use in situations requiring a loading up to 125kN (12.5 tonnes).

Product Weight - 19.8kg

Please Note: The frame of this cover must be supported by a concrete plinth.

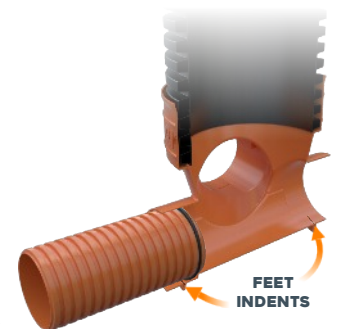


INSTALLING PIPES & SEALS



When installing the structured pipe into the Trio chamber, you must ensure that the pipe seal is located between the first and second rib of the pipe, as shown above.

Also ensure that the seal is pushed past the feet indents that are within the pipe socket. (As illustrated opposite).



FEET INDENTS

ACCESSO
- CHAMBER MADE -

