

## PRODUCT OVERVIEW

The Washceptor range is predominantly used in vehicle wash down areas or jet wash bays to separate detergents or silt and dirt and prevent them from being discharged into the drainage system.

The Washceptor comes in 5 capacity sizes:

1000, 2000, 3000, 5000, 10,000 litres (8 model options)

Each unit comes as a single, two or three stage option to suit the required application.

Multi stage units are delivered as separate chambers.

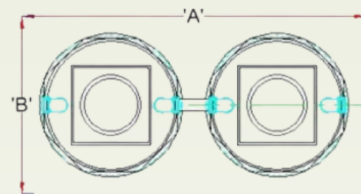
All Washceptors produce Class 2 discharge levels and must discharge to a foul drain.

Material: Polyethylene, HDPE

- Lightweight rotational moulded HDPE construction
- Separates and retains sediment, silt and hydrocarbons from washdown areas
- Single and multistage units available to optimise performance per application
- Easy access for emptying and cleaning
- Ideal for tool hire depots, car and pressure washers, sportsground equipment wash facilities, fleet maintenance and valeting

### Please Note

The waste separated from vehicle washing and cleaning businesses can be classified as 'contaminated waste'. As such there is a duty of care to dispose/recycle this waste responsibly through a registered waste carrier to a suitably licensed facility.



PLAN VIEW



SIDE ELEVATION

Range/Model Washceptor	Flowrate	Vehicles/Hour (approx)	Nominal Capacity	Footprint (allowing for backfill) L x W x D mm	Model Ref
Single Jetwash/handwash	10L/min	4	1000 litres	1560 x 1560 x 1785	W1S12
				2010 x 910 x 1650	W2S12
Commercial Carwash	20L/min	8	2000 litres 3000 litres	3020 x 1560 x 1785	W2S24
				4480 x 1560 x 1785	W3S36
Brush wash	50L/min	12	5000 litres	4480 x 1560 x 2385	W3S60
				2710 x 2650 x 2350	W1S60
Gantry/truck wash	100L/min	Commercial vehicles/coaches	10,000 litres	7110 x 2510 x 2210	W3S120
				5120 x 2650 x 2350	W2S120