

Product Code	Main channel pipework Ø (mm)	Side Inlets Ø (mm)	Overall Depth A (mm)	Inlet Invert B (mm)	Soffit Depth C (mm)	Approx. Weight (kg)
<b>AIC225600TB - Base only</b>	225	2 x 225	605	553	328	10
<b>AIC225600T1SP</b>	225	2 x 225	1045	993	768	24
<b>AIC225600T15SP</b>	225	2 x 225	1500	1448	1223	32.5
<b>AIC225600T20SP</b>	225	2 x 225	1955	1903	1678	41
<b>AIC225600T24SP</b>	225	2 x 225	2410	2358	2133	50
<b>AIC225600T30SP</b>	225	2 x 225	2995	2943	2718	61

**Please Note:**

- Pipe seals are not provided with these chambers. Specific pipe seals from manufacture must be used.
- Chambers deeper than 1000mm to soffit of pipework, require a Restriction Cap 600RCMD to comply with DCG.



**INSPECTION CHAMBER FOUL & SURFACE WATER SYSTEMS**

**Ø600mm** - Factory built inspection chambers, delivered to site as single piece units, ready to install, with no assembly required.

All chambers feature a durable, impact resistant, rota moulded base, which has the unique ability to connect to three different Ø225mm structured pipe systems - UltraRib, Polysewer and Marley Quantum.



The base has a Ø225mm main channel, which is supplied open (as shown opposite). There are two further Ø225mm side connections, which have blind ends, that can be cut off for use on site, if required.

**APPLICATION**

- Above ground access for inspection and maintenance of foul & surface water pipe systems
- Suitable for Adoptable and Non-Adoptable applications
- Maximum installation depth to soffit of pipe - Adoptable 3000mm and Non-Adoptable 3000mm

**COMPLIANCE**

- Design & Construction Guidance (DCG) - Type D & E Chambers

**FEATURES**

- Unique base design that accepts 3 different Ø225mm structured pipe systems - UltraRib, Polysewer & Marley Quantum
- Reducers are available to connect to Ø150mm UltraRib, Polysewer & Marley Quantum and 160mm EN1401 single wall pipe
- Rota Moulded LLDPE base - chemical and impact resistant
- Base and five standard depths available
- Stepped base - 53mm step from side to main channel, to meet DCG requirement for Adoptable Sewers
- Restriction Cap available to reduce access to Ø320mm to comply with DCG - Design & Construction Guidelines for deeper chambers
- Reduction Cap available (As detailed opposite)
- Access shafts are easily cut onsite to required depth
- Chambers can be installed in granular backfill

**REDUCERS**

There are three reducers available for reduction to Ø150mm from all of the 3 specific 225mm structured pipe systems -

Product code:

**PSMQR225150**

Reducer to Ø150mm Polysewer & Quantum

**URR225150**

Reducer to Ø150mm UltraRib

**PSMQRR225160**

Reducer to Ø160mm EN1401 single wall pipe



**REDUCTION CAP**

The **600450RC** Reduction Cap, reduces the Ø600mm access to Ø450mm, which allows for the **450ACSRA** access cover to be fitted. This cover has a built in restriction of Ø350mm, to meet DCG.



**ACCESS COVERS**

There are two access covers available for these chambers. Both covers are lightweight and can be handled and installed by a single person.

Product code:

**600ACSB125**

**Square section composite access cover**

Class BS EN 124-B125, suitable for loading up to 12.5 tonnes

Product Weight - 12kg



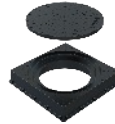
Product code:

**450ACSRA**

**450mm square section with integral Ø350mm restricted access for use with 600450RC**

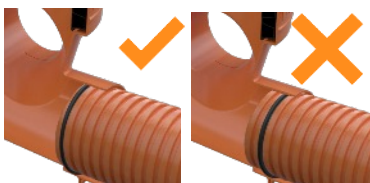
Class BS EN 124-A15, suitable for loading up to 1.5 tonnes

Product Weight - 14kg



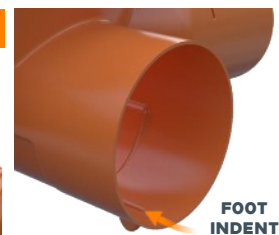
**Please Note:** The frame of this cover must be supported by a concrete plinth.

**INSTALLING PIPES & SEALS**



When installing the structured pipe into the Trio chamber, you must ensure that the pipe seal is located between the first and second rib of the pipe, as shown above.

Also ensure that the seal is pushed past the base foot indent within the pipe socket.



**FOOT INDENT**

