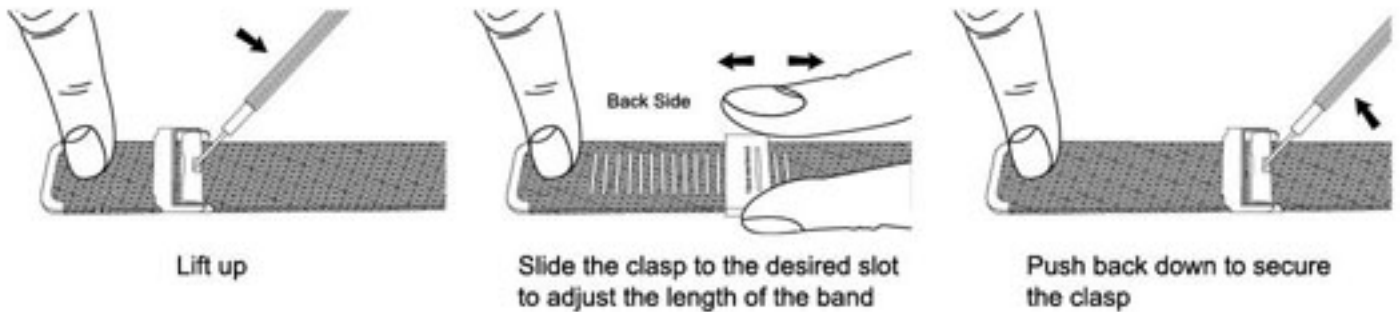


ADJUSTING MESH BANDS

HOW TO ADJUST THE SIZE OF THE MESH BAND



The secret to adjusting a mesh bracelet is to use an appropriate tool. The adjustable security clasp often requires much pressure to loosen, making it possible to slide up and down to adjust the band to the size of your wrist. It is usually impossible to raise the adjustment plate of the clasp using a fingernail. The wrong tool can easily scratch the bracelet as well. The key to success is to use something like a miniature screwdriver. Use a small screwdriver like the ones used to adjust eyeglasses. Gently slide it under the rotating adjustment plate and lift up.

Once the adjustment plate has been raised, you can slide the clasp up and down the mesh band until the proper fit has been obtained. There are small parallel slots on the underside of the mesh that provide a receptacle for a small metal tip on the edge of the adjustment plate. When the proper fit for your wrist has been obtained, just press the plate firmly downward with your hand and engage the tip of the adjustment plate with one of these slots for a reliable and secure fit.