

## STYLISH FEATURES



FS70

### Features

Type of screen	LCD screen
Number of built-in stitches	70
Buttonhole styles	7 one-step
Needle threading system	Advanced
Quick set bobbin	✓
F.A.S.T. bobbin winding system	✓
Bright LED sewing	✓
Stitch width & length control	✓
Drop feed	✓
Free arm sewing ability	✓
Start/Stop Key	✓
Needle stop positioning setting	✓
Speed controller	✓
7 Point Feed	✓
Maximum stitch width	7mm
Maximum stitch length	5mm
Maximum speed	850

Contact:



[www.brother.ae](http://www.brother.ae)

## FS70

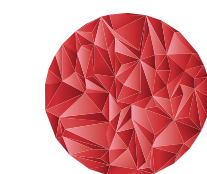
brother  
at your side



## FS70

Featuring built-in stitches, superior stitch speed and intuitive interface, ideal for garment creation and quilting

- 7 Buttonholes
- 70 Stitches
- Automatic needle threader
- LED sewing light

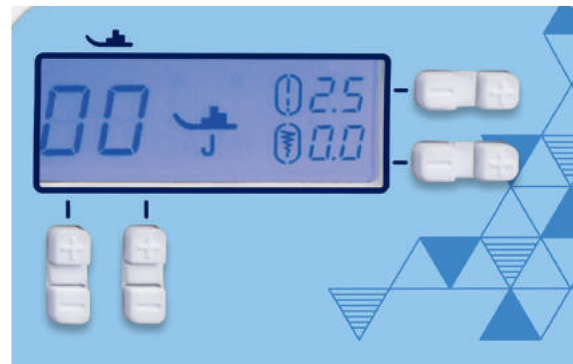


Japanese  
Excellence  
For Over 100 Years



For speed and ease of use, the FS70 gets you sewing quickly with little fuss. No more wasting time trying to feed thread into the machine. Suitable for use across a wide range of fabric weights.

**LCD Display**



Set a glance the information of your stitch. Length, width, and type of presser foot required are all clearly identified on the LCD display.

**Automatic Needle Threader**



Needle threading is quick and simple with one-step action.

**Fast Speed Stitching**



850 stitches per minute with speed control by shutter key. (W/O foot controller)

**Quick Set Bobbin**



Simply drop in a full bobbin, thread in the direction of the arrow and you are ready to sew.

The see-through bobbin cover is an advantage; you can check bobbin status so you know when you need to change the bobbin.



**7-point Feed**



Extra teeth ensure a smooth feeding action and superior stitch quality. Sew with accuracy on a variety of fabrics from sheer silk to denim.

**LED Sewing Light**



Light your workspace effectively with the LED light. It uses less power than a traditional bulb and lasts the life of the machine.



**FS70**