

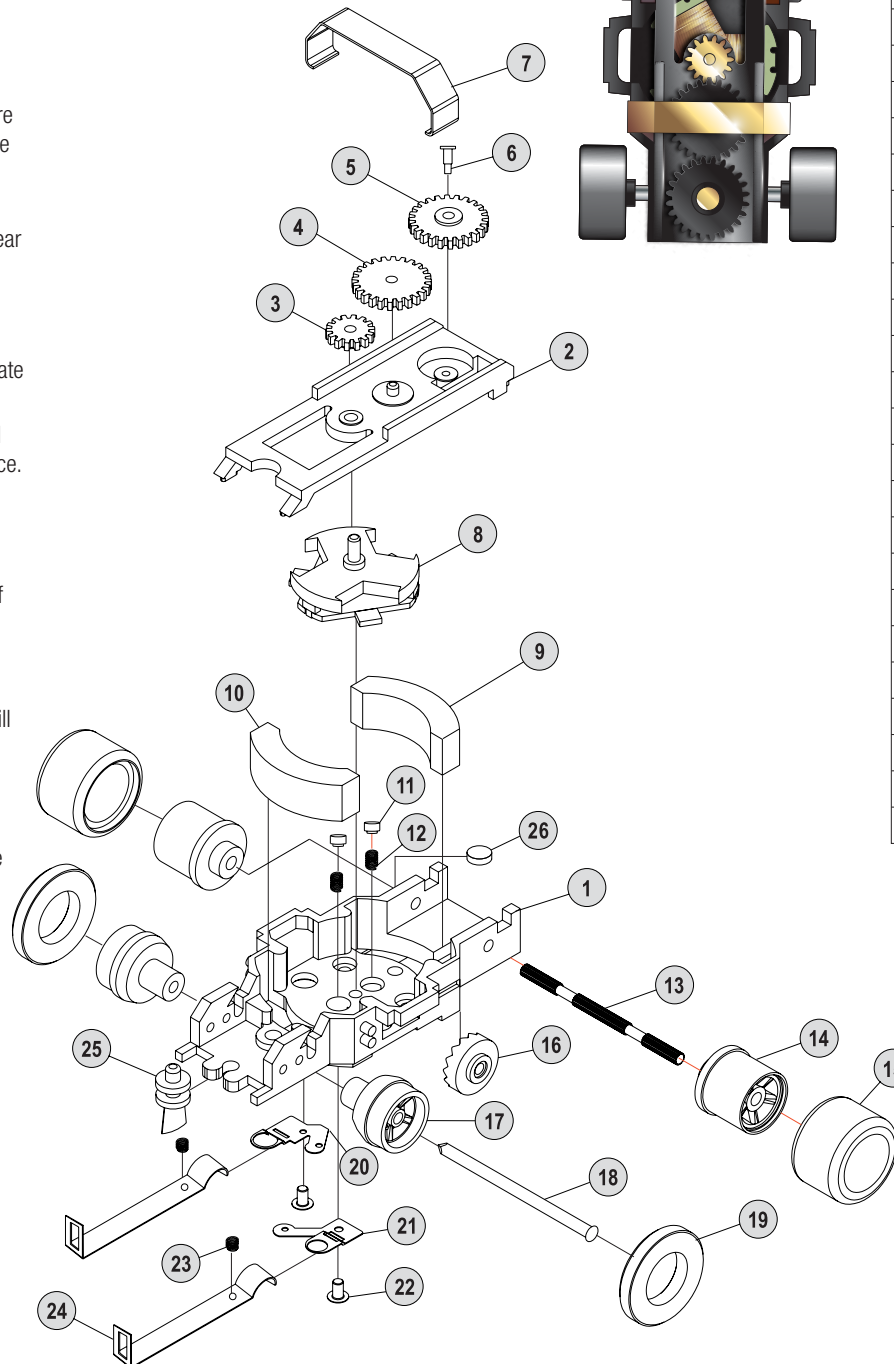
## ASSEMBLY INSTRUCTIONS

NOTE: Some parts shown in the diagram are pre-assembled.

1. Insert the two commutator springs (12) into the center holes of the chassis (1). These are the shorter, softer springs included in the Pit Kit. Place a commutator brush (11), flat side up, on top of each spring.
2. Slide the front magnet (10), with white painted edge facing down, into front recess of chassis (1). Now slide the rear magnet (9), with its red painted edge facing down, into rear recess of the chassis.
3. Place the idler gear (4) over the pin on the gear plate (2), aligning the teeth with the armature pinion gear (3) and cluster gear (5).
4. Lower the gear plate (2) onto the chassis (1) by first sliding the front tabs on the gear plate into the notches in the chassis and centering the armature (8) between the magnets.
5. Slip one side of the retainer clip (7) into the notch on one side of the chassis (1). Spread the clip slightly and snap it into the other side of the chassis, to hold the idler gear in place.
6. Flip the chassis over. Place a pick-up spring (23) in the circular recessed area of the left connector plate (21).
7. Hook the rear edge of a pick-up shoe (24) under the lip on the forward edge of the left metal connector plate (21), taking care not to move the pick-up spring. Bring the front of the pick-up shoe down, compressing the pick-up spring, and lightly snap the hole in the front face of the shoe over the locating tab on the front edge of the chassis. Repeat this procedure for the other side using the second pick-up spring and shoe.
8. Slide a rear tire (15) onto each rear wheel (14). Keeping the tires squared on the rims will improve performance!
9. Slide a front tire (19) onto each front wheel (17).
10. Snap the guide pin (25) into the front of chassis (1).
11. Holding the body upside down, lower the chassis into the body on an angle, inserting the tab on one side of the chassis into the notch inside the body. Lightly spread the body open enough to snap the other side of the chassis into the body.

## Your X-Traction slot car should now be ready to race!

Test your car on the track. If it does not run properly, re-read each assembly step to confirm you have completed it correctly. If the car runs backwards, ensure the magnets are in the correct orientation in the chassis. For more information, visit [autoworldslotcars.com](http://autoworldslotcars.com).



## PARTS LIST

1	Chassis
2	Gear Plate
3	Pinion Gear
4	Idler Gear
5	Cluster Gear
6	Rivet
7	Retainer Clip
8	Armature
9	Rear Magnet (Red)
10	Front Magnet
11	Commutator Brushes
12	Commutator Springs
13	Rear Axle
14	Rear Wheel
15	Rear Tire
16	Crown Gear
17	Front Wheel
18	Front Axle
19	Front Tire
20	Connector Plate (Right)
21	Connector Plate (Left)
22	Rivet
23	Pick-up Spring
24	Pick-up Shoe
25	Guide Pin
26	Ultra-G™ Magnet