

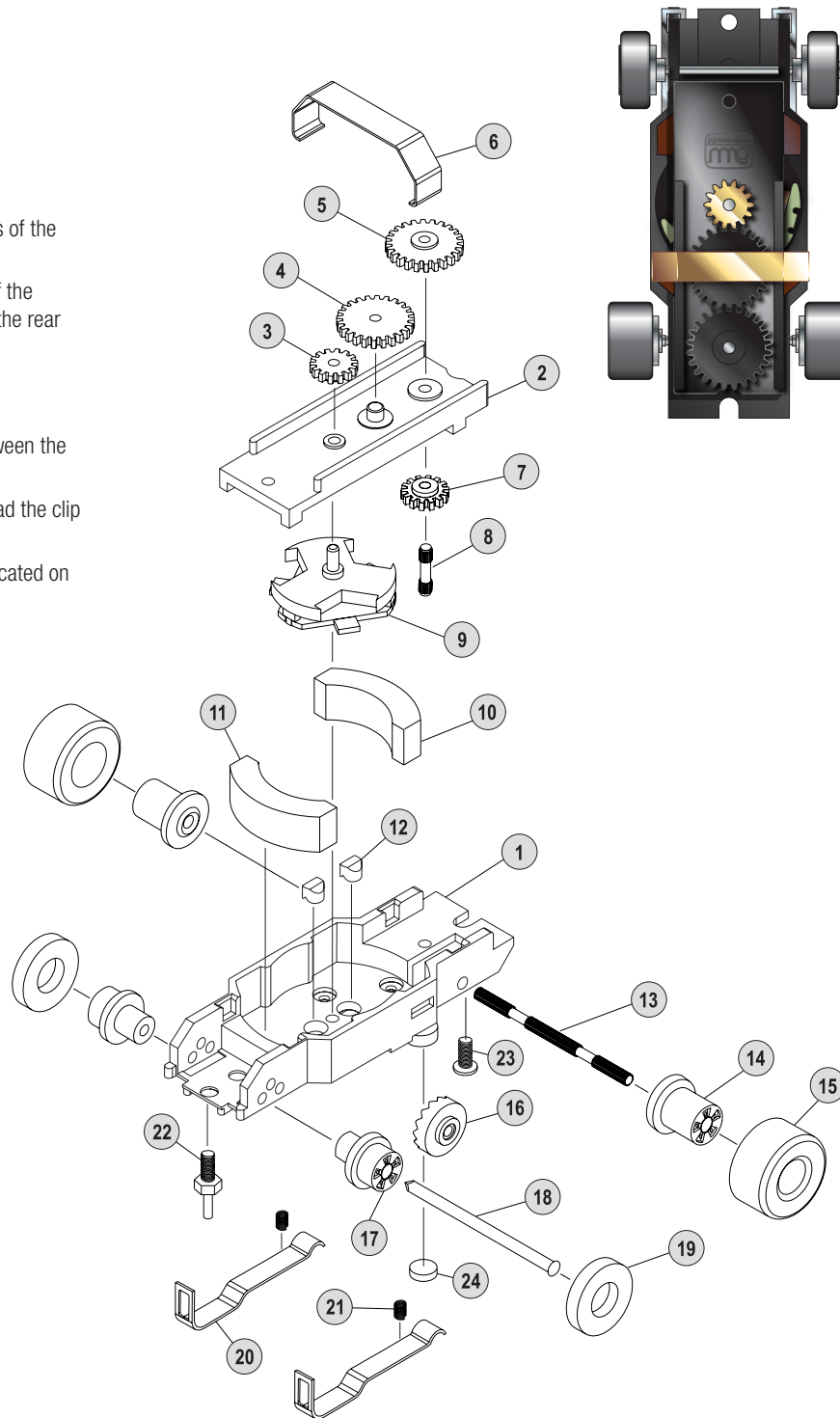
## ASSEMBLY INSTRUCTIONS

NOTE: Some parts shown in the diagram are pre-assembled.

1. Insert the two commutator brushes (12) with their notched side down into center holes of the chassis (1). Align their notches to fit over the tabs on the metal connector plate arms.
2. Slide the front magnet (11) with its blue painted edge facing up into the front recess of the chassis (1). Now slide the rear magnet (10) with its white painted edge facing up into the rear recess of the chassis.
3. Place the idler gear (4) over the pin on the gear plate (2), aligning its teeth with the armature pinion gear (3) and cluster gear (5).
4. Carefully lower the gear plate (2) onto the chassis (1), centering the armature (9) between the magnets. The four tabs on the gear plate fit into notches on the chassis.
5. Slip one side of the retainer clip (6) into the notch on one side of the chassis (1). Spread the clip slightly and snap it into other side of the chassis, to hold the idler gear in place.
6. Flip the chassis over. Place a pick-up spring (21) on the left recessed mounting pin, located on the chassis toward the rear of the pick-up shoe bed.
7. Hook the rear edge of a pick-up shoe (20) under the lip on the forward edge of the left metal connector plate (attached to chassis), taking care not to move the pick-up spring. Bring the front of the pick-up shoe down, compressing the pick-up spring, and lightly snap the hole in the front face of the shoe over the locating tab on the front edge of the chassis. Repeat this procedure for the other side using the second pick-up spring and shoe.
8. Slide a rear tire (15) onto each rear wheel (14) keeping the tires squared on the rims.
9. Slide a front tire (19) onto each front wheel (17).
10. Holding the body upside down, lower the chassis into the body. Align the chassis mounting holes with the body's screw mounting posts. Place the threaded metal guide pin (22) into the frontmost hole of the chassis aligning the mounting hole from the body. Tighten the metal guide pin using a standard 4.5 mm hex socket.
11. Assemble a mounting screw (23) into the rear notch of the chassis aligning it to the rear mounting post of the body and tighten it with a small Phillips head screwdriver.

## Your ThunderJet slot car should now be ready to race!

Test your car on the track. If it does not run properly, re-read each assembly step to confirm you have completed it correctly. If the car runs backwards, ensure the magnets are in the correct orientation in the chassis. For more information, visit [autoworldslotcars.com](http://autoworldslotcars.com).



## PARTS LIST

1	Chassis
2	Gear Plate
3	Armature Pinion Gear
4	Idler Gear
5	Cluster Gear
6	Retainer Clip
7	Drive Pinion Gear
8	Cluster Gear Shaft
9	Armature
10	Rear Magnet (White)
11	Front Magnet (Blue)
12	Commutator Brushes
13	Rear Axle
14	Rear Wheel
15	Rear Tire
16	Crown Gear
17	Front Wheel
18	Front Axle
19	Front Tire
20	Pick-up Shoe
21	Pick-up Spring
22	Metal Guide Pin
23	Mounting Screw
24	Ultra-G™ Magnet