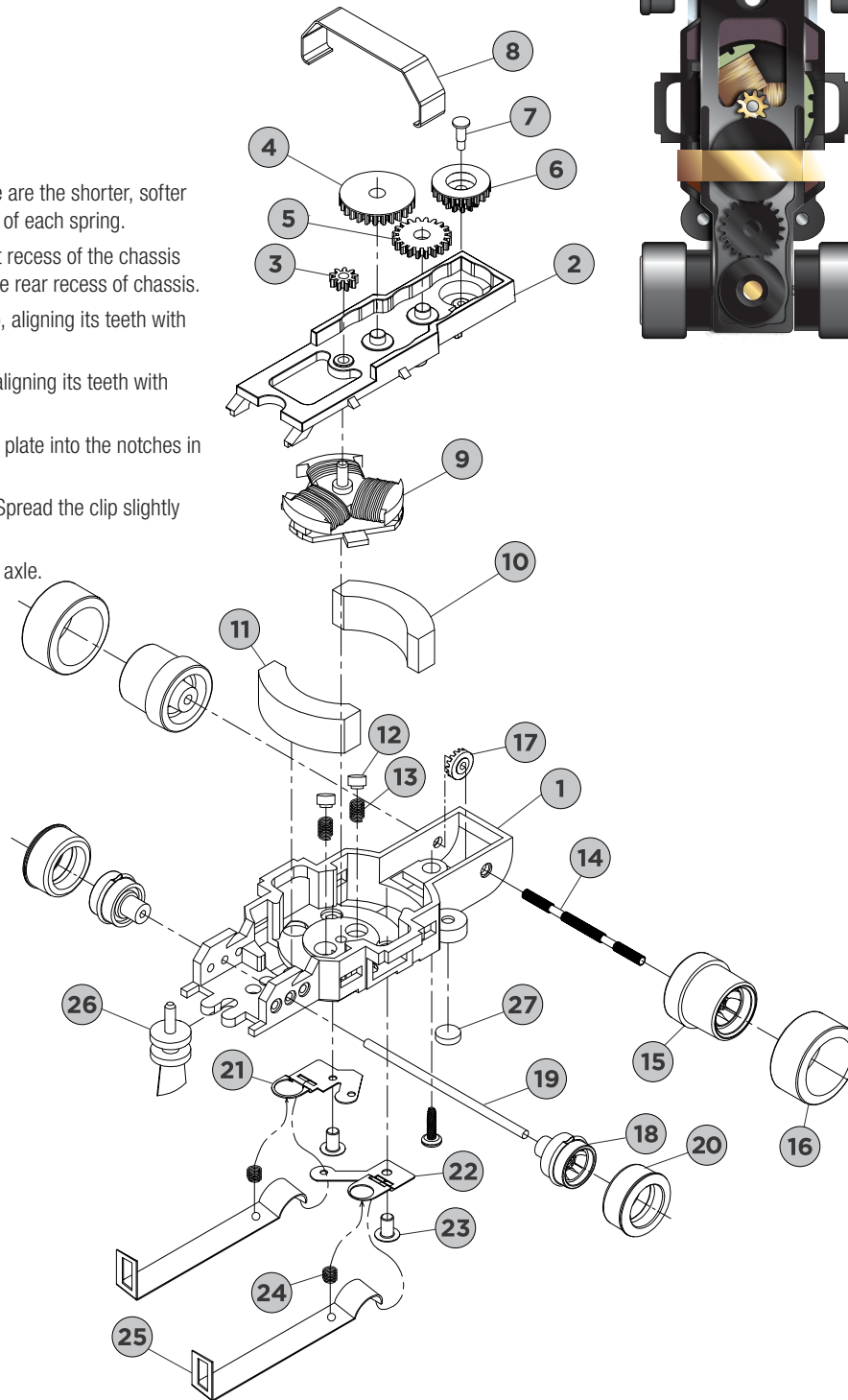


ASSEMBLY INSTRUCTIONS

NOTE: Some parts shown in the diagram are pre-assembled.

1. Insert the two commutator springs (13) into the center holes of chassis (1). These are the shorter, softer springs included in the Pit Kit. Place a commutator brush (12), flat side up, on top of each spring.
2. Slide the front magnet (11), with its white painted edge facing down, into the front recess of the chassis (1). Now slide the rear magnet (10), with its red painted edge facing down, into the rear recess of chassis.
3. Place the 20-tooth secondary idler gear (5) over the rear pin on the gear plate (2), aligning its teeth with the 20/12-tooth cluster gear (6).
4. Place the 26-tooth primary idler gear (4) over the front pin on the gear plate (2), aligning its teeth with 20-tooth secondary idler gear and the 9-tooth pinion gear (3).
4. Lower the gear plate (2) onto the chassis (1) by first sliding the front tabs on gear plate into the notches in the chassis and centering the armature (9) between the magnets.
5. Slip one side of the retainer clip (8) into the notch on one side of the chassis (1). Spread the clip slightly and snap it into the other side of the chassis to hold the idler gear in place.
6. Flip the chassis over and insert the small Phillips screw into the hole near the rear axle. Tighten the screw to secure the gear plate (2) to the chassis (1).
7. With the chassis upside down, place a pick-up spring (24) in the circular recessed area of the left connector plate (22).
8. Hook the rear edge of a pick-up shoe (25) under the lip on the forward edge of the left metal connector plate (22), taking care to not move the pick-up spring. Bring the front of the pick-up shoe down, compressing the pick-up spring, and lightly snap the hole in the front face of the shoe over the locating tab on the front edge of the chassis. Repeat this procedure for the other side using the second pick-up spring and shoe.
9. Slide a rear tire (16) onto each rear wheel (15). Keeping the tires squared on the rims will improve performance!
10. Slide a front tire (20) onto each front wheel (18).
11. Snap the guide pin (26) into the front of the chassis (1).
12. Holding the body upside down, lower the chassis into the body on an angle, inserting the tab on one side of the chassis into the notch inside the body. Lightly spread the body open enough to snap the other side of the chassis into the body.



PARTS LIST

1	Chassis
2	Gear Plate
3	9-Tooth Pinion Gear
4	26-Tooth Primary Idler Gear
5	20-Tooth Secondary Idler Gear
6	20/12-Tooth Cluster Gear
7	Rivet
8	Retainer Clip
9	Armature
10	Rear Magnet (Red)
11	Front Magnet
12	Commutator Brushes
13	Commutator Springs
14	Rear Axle
15	Rear Wheel
16	Rear Tire
17	18-Tooth Crown Gear
18	Front Wheel
19	Front Axle
20	Front Tire
21	Connector Plate (Right)
22	Connector Plate (Left)
23	Rivet
24	Pick-up Spring
25	Pick-up Shoe
26	Guide Pin
27	Ultra-G™ Magnet

Your 4Gear slot car should now be ready to race!

Test your car on the track. If it does not run properly, re-read each assembly step to confirm you have completed it correctly. If the car runs backwards, ensure the magnets are in the correct orientation in the chassis. For more information, visit autoworldslotcars.com.