



Larvicide

HokoEx®

An effective larvicide product, especially targeting fly larvae for use in animal husbandry areas, landfill and waste management sites.

Cyromazine 2% w/w (20 g/kg)

What is HokoEx®?

HokoEx® is a larvicide, formulated using the active ingredient cyromazine, which targets fly larvae in particular. Designed as a water-soluble granule, it can be applied directly to wet areas or be diluted before application. The product works by disrupting the life-cycle of the fly, preventing instar moulting in larvae and pupae. As a result of this disruption, the number of larvae progressing into adult flies is significantly reduced.

Benefits of HokoEx®:

- **Reduces adult fly populations**
- **Helps reduce the spread of *Salmonella* and other bacteria transmitted by flies**
- **Helps maintain productivity**
- **Non-dusty**
- **Harmless to beneficial insects**

Application Environments:

- **Poultry houses**
- **Piggeries**
- **Cattle sheds**
- **Milking parlours**
- **General animal husbandry**
- **Landfill sites**
- **Waste management sites**
- **Horse sheds**

Not suitable for direct application to animals.

Active Ingredient:

Cyromazine 2% w/w (20 g/kg)

Mode of Action:

Cyromazine interrupts the fly metamorphosis by preventing larvae from developing beyond the instar larva or pupa stage.

Target Pests:

- **Blow flies**
- **Flesh flies**
- **Fly larvae***
- **Gall midges**
- **Horse-flies**
- **Midges**
- **Moth flies**

**HokoEx® is effective on all dipteran larvae known as true flies*

Formulation

What are soluble granules? (SG)

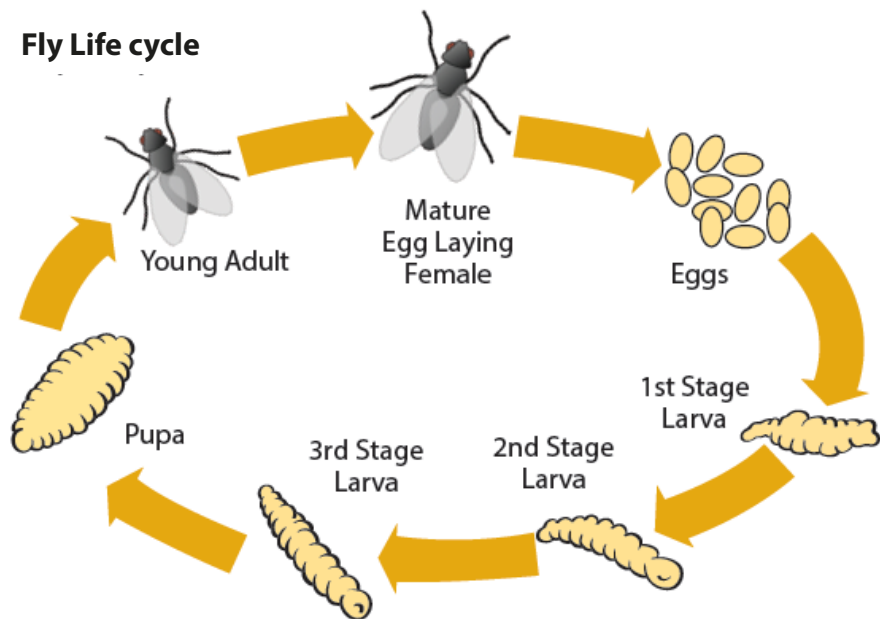
Soluble granules (SG) are similar in application to wettable powders (WP); however rather than being dust-like, they are formulated as small, easily measurable granules. This has several advantages over WPs, such as reducing user exposure due to the lower risk of inhalation.



How Does HokoEx® Work?

The active ingredient in HokoEx®, cyromazine, is effective on the first five stages of the fly life cycle and prevents the progression from one larval stage to the next. HokoEx® is effective until the pupal stage of metamorphosis occurs, and the adult fly emerges.

The adult fly represents around 20% of the total life cycle, and it is the adult flies that become a nuisance to both livestock and humans. A fly population can increase very rapidly in optimal conditions. HokoEx® helps to reduce the overall fly population through disrupting the larval stages, preventing the development from pupae to fly.





Application Recommendations:

HokoEx® can be applied as a surface spray, scattered, or diluted and poured.

	Rate	Water	Area
Surface spray	250 g	1-4 L	10 m ²
HokoEx® should be sprayed when applying to relatively dry areas at a rate of 25 g per m ² over an entire surface area.			
Scattered	25 g	N/A	1 m ²
HokoEx® may be scattered if the surface is liquid or very moist.			
Poured	250 g	10 L	10 m ²

Application:

Cattle and horses: First application is most effective 1-3 days after dung removal.

Pigsties: If possible, treat before housing the pigs - shortly after removal of manure/slurry.

Poultry: Apply 1 week from removal of excrement, but before a depth of 10 cm has accumulated.

Landfill: Spray, pour or scatter depending on moisture levels. Pay attention to areas high in organic matter.

HokoEx® should be applied at intervals exceeding 6 weeks. Animals may be present during application.

Use biocides safely. Always read the label and product information before use.

Hockley International

Permost CS

Contains:
permethrin 25%



Permex 22 E

Contains:
permethrin
12.36%, +
tetramethrin
1.64% + PBO
6.40%



Piretrox

Contains:
natural
pyrethrum 1.25%



Permost Uni Fly Spray

Contains:
permethrin
0.25%
+ tetramethrin
0.1%
+ PBO 0.3%



Tetrapiu

Contains:
permethrin
0.15% +
tetramethrin
0.06% + PBO
0.3%



Piretrox PU

Contains:
natural
pyrethrum 0.3%
+ PBO 3%



Py-Pro Super

Contains:
natural
pyrethrum 0.3%
+ PBO 3%



SoFast

Contains:
imidacloprid
0.5% +
(z)-9-tricosene



HokoEx

Contains:
cyromazine 2%



To discuss our range of products, please call +44 (0) 161 209 7400 or email: mail@hockley.co.uk

Hockley International Limited, Hockley House, 3 Longstone Road, Ashbrook Office Park, Manchester, M22 5LB,
United Kingdom