



Fascinating facts about the Queen Bee



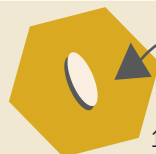
Her Majesty

Although called the "queen bee", the queen is not the ruler of the hive, giving orders, but the mother of the hive.

A queen can lay up to

2,000 eggs a day.

That's about one egg every 43 seconds!



Each egg is 1-1.5mm long.



The Servants

Since the queen is so busy laying eggs, she has servants, called "attendants" who follow her all day, feeding and cleaning her.



Done with Men After a Day

The queen leaves the hive for 1-2 days to mate. During this time, she will mate with up to 30 drones (male bees). She will then return to the hive and never mate again.

Honey isn't her favorite...

The queen spends the majority of her life in the hive. She will never visit a flower or make honey, nor does she eat much honey. Her primary diet is royal jelly, a substance secreted by the worker bees.



Game of Thrones Kind of Drama

When a queen is not fertile anymore, the worker bees will kill her and make a new queen.

Worker bees make a queen by feeding a fertilized egg royal jelly, a substance they secrete out of a gland in their head.

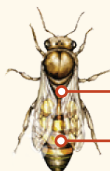
A handful of queens are made. The first to hatch finds the unborn queens & kills them so she can become the new, reigning queen.

Can You Spot the Queen?



Smaller body
Often seen at flowers

Worker Bee



Longer body
Caramel colored

Queen Bee



Large eyes

Wide body & round butt

Drone Bee

Learn more about bees and honey on our Big Island Bees Facebook and Instagram pages.

You can buy our raw, organic honey at BigIslandBees.com!

© Big Island Bees 2017