

TIPS FOR PROPER USAGE

Get the most out of your Hotel Collection experience

- Avoid windows or air vents so the scent can circulate through the surrounding area. Place the diffuser in an area on its own so the scent can flow freely.
- Always position the diffuser upright so the Hotel Collection oil can diffuse upward into the air.
- Your Hotel Collection diffuser will only work properly when using Hotel Collection oils. Use of any other oil is not recommended and will void the warranty.
- To preserve the motor of your Scent Diffuser, it is recommended to run it for no more than 8 hours a day.

MAINTENANCE

The Hotel Collection diffuser should be cleaned every 1-2 months to ensure optimal performance. To clean the inner workings of the device please follow these steps:

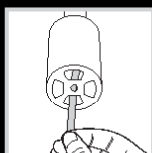
- 1 Fill the empty Hotel Collection bottle that came with your diffuser with rubbing alcohol to the second line from the bottom.
- 2 Screw the alcohol filled bottle into the diffuser.
- 3 Run the diffuser for 15 minutes to ensure the alcohol can filter through the whole device.

Unplug the device from the wall outlet and keep the diffuser in an upright position. Wipe the device with a damp cloth to remove oil stains and fingerprints. Avoid using any harsh or abrasive cleaning products.

REPLACING THE NOZZLE



- 1 To change the nozzle, unplug the diffuser, remove the bottle of oil and carefully pull out the clear tube. Gently pull out the black nozzle by wiggling it gently using a pair of tweezers.



- 2 Replace it with a new nozzle and ensure the nozzle is pressed very firmly into the top of the diffuser. The tube can be reinserted into the nozzle.

It is very important that you put the tube into the correct opening of the nozzle otherwise the unit will not diffuse scent. Within the nozzle there is a small round tube holder that the tube needs to be firmly secured into.

TIP: If you are having difficulty seeing the tube holder inside the nozzle, hold a flashlight into the nozzle to increase visibility.

3. Insert the Hotel Collection oil of your choice, reconnect both halves of the diffuser and plug it into the wall outlet. You're ready to begin scenting!

SAFETY

To ensure safe usage, follow these precautions

- The Hotel Collection diffuser should always be used in an upright position. Do not tilt the diffuser as oil can spill inside the device and damage the mechanics.
- Use of the Hotel Collection diffuser and aroma oils requires adult supervision.
- Do not wet the device or place it near any liquids, sinks, bath tubs, or outdoors.
- Do not use the device with any power cord other than the one provided with your diffuser. Position the power cord to prevent it from being a tripping hazard.
- Before connecting your Hotel Collection diffuser to a power outlet, check that the voltage label specified on the adapter is the same as the power supply.
- Do not run the unit on empty. Unless there is oil in the bottle or alcohol for cleaning, turn the device off.
- Do not ingest any Hotel Collection oils.
- Do not apply any Hotel Collection oils to any part of the skin. Keep oils out of contact with eyes, ears, nose, mouth and any other bodily opening. If contact does occur, flush with water immediately until all traces of oil have been removed entirely from the area.

The Scent Diffuser comes with a
90-day limited warranty.*

**PLEASE REGISTER YOUR
NEW HOTEL COLLECTION PRODUCT AT**
www.hotelcollection.com/pages/warranty

*Please note all Hotel Collection diffusers are specifically designed to be used with Hotel Collection oils. Using any other oils will VOID the 90-day warranty.

*PRODUCTS MUST BE REGISTERED WITHIN FOURTEEN (14) DAYS OF PURCHASE. FOR ALL TERMS AND CONDITIONS OF PURCHASE & WARRANTY PLEASE VISIT HOTELCOLLECTION.COM

H
HOTEL
COLLECTION

INSTRUCTION MANUAL





H HOTEL COLLECTION

WELCOME

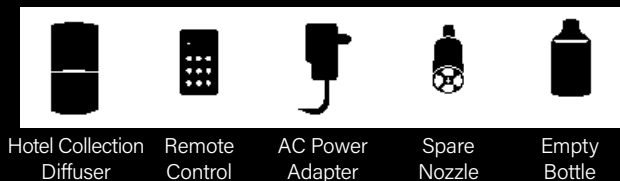
To the world of Hotel Collection scenting! With your Hotel Collection scent diffuser, you'll be able to create a unique ambiance in a few simple steps.

Through the advanced technology of Cold-Air Diffusion, your discreet and sleek Hotel Collection diffuser is a convenient and practical solution to enhance any space you desire.

Please begin by reading the Tips, Safety, and Maintenance sections of this instruction manual to get the best Hotel Collection experience.

3000 HOURS
MOTOR LIFE

PACKAGE CONTENTS:



Hotel Collection Diffuser

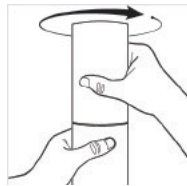
Remote Control

AC Power Adapter

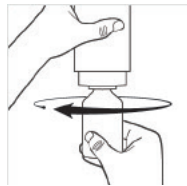
Spare Nozzle

Empty Bottle

SETTING UP YOUR HOTEL COLLECTION DIFFUSER

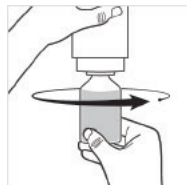


1 To open your Hotel Collection diffuser, rotate the upper half of your device in a counterclockwise motion, while firmly holding the bottom half.

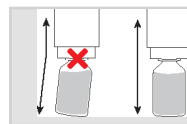


2 Remove the empty Hotel Collection bottle from the diffuser by turning it clockwise. The empty bottle is included in your equipment to be used in the cleaning process of your diffuser.

Please refer to the Maintenance section of this instruction manual to learn about the proper cleaning procedure.

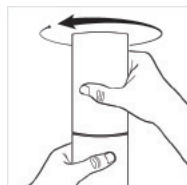


3 Once you have selected the Hotel Collection scenting oil of your choice, carefully screw the bottle counterclockwise into the diffuser.

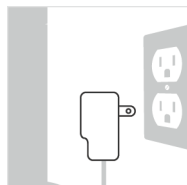


Important!

Make sure the bottle is screwed in tight and parallel to the top half of the Hotel Collection



4 Once you have screwed on the Hotel Collection oil, close the unit tightly by sliding the upper half back into place and turning clockwise.



5 Connect the power adapter into the diffuser's power port and plug it into a 110V power outlet. Position the power cord to prevent it from being a tripping hazard.

DIFFUSER LED COLOR KEY

- Blue LED Light - Indicates the device is powered on
- Green LED Light - Indicates the scent is being diffused
- Red LED Light - Flashes when any button on the remote control is being pressed

REMOTE CONTROL FUNCTIONS

ON **OFF** On and Off - Powers the device On and Off

Density + (plus) - Increases aroma's density by 10%. Press 10 times for maximum density

Density - (minus) - Decreases aroma's density by 10%. Press 10 times for minimum density

AROMA Pressing "Aroma" will cause the unit to work continuously. Adjust the settings according to the density desired.

20% The blue buttons allow you to control the scent concentration by adjusting the scenting interval.

The options are: 20%, 35%, 50%, 65%, 80%, 95%

20% - Diffuser will diffuse scent for 40s and pause for 160s

50% - Diffuser will diffuse scent for 100s and pause for 100s

95% - Diffuser will diffuse scent for 180s and pause for 10s

1h Allows the diffuser to run continuously for a specified amount of hours.

1h = 1 hour, **4h** = 4 hours, **8h** = 8 hours

RESETTING THE REMOTE CONTROL

Please follow these steps to reset the remote control to its factory settings:

- Unplug the diffuser from the power outlet.
- Hold down the blue button on the remote labeled "35%" for 5 seconds while plugging the diffuser back into the wall outlet. A red light will flash on the diffuser.
- Avoid pressing any buttons on the remote for 10 seconds as it takes time for the receiver within the device to reset itself.