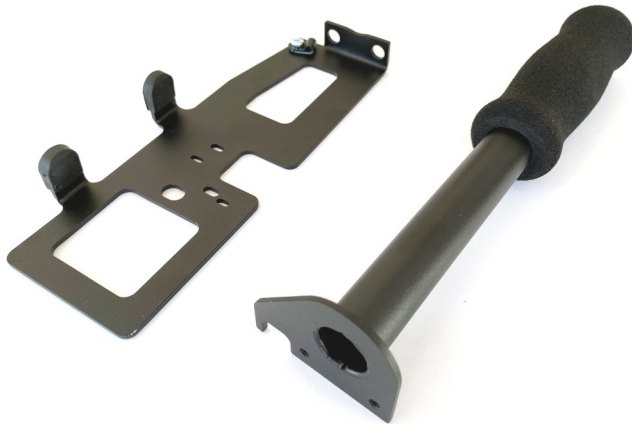


UNIVERSAL DRIVE THRU HAND HELD BRACKET







Designed to give an ergonomic and flexible mounting platform for your payment terminal specifically for use in drive through restaurant windows

Features

- Manufactured in robust mild steel
- Durable powder coated finish
- Cable management
- Security screws to hold terminal (screws provided)
- Simple and quick assembly
- Suitable for the following terminal models:
 - Verifone VX805, VX820, P200/400
 - Ingenico IPP310/320/350
 - PAX S300
 - Dejavoov Z3/6

Installation instructions

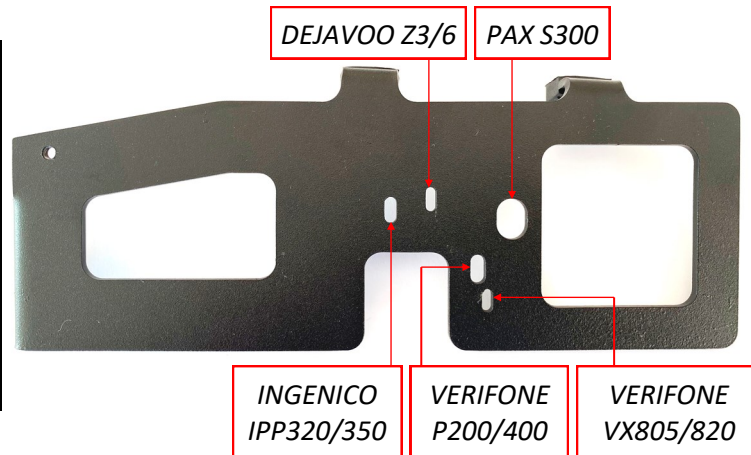
-  M2 x 10 Pan head - Verifone VX805/820, Dejavoov Z3/6
-  M2.5 x 12 Pan head - Ingenico IPP320/350
-  M3 x 8 Pan head - Verifone P200/400
-  M5 x 12 Countersink - PAX S300

Step one

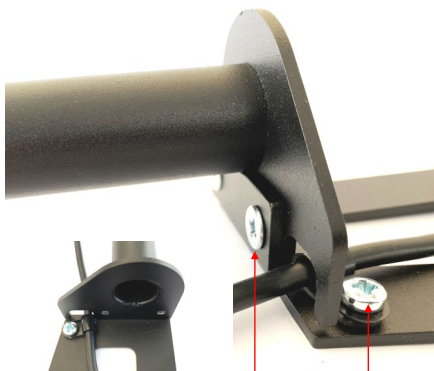
Choose the correct terminal securing screw from the adjacent list to suit your terminal model.

Step two

With the cradle plate upside down, choose the correct securing hole for your terminal as shown in the adjacent image. Then fix the terminal onto the cradle plate by holding it against the side rubbers while tightening the securing screw.





Highland Park
Illinois
60035



Step three

Choose the correct cable clip from the 3 options and then fix the cable down using the M4 x 6 screw. Then fit the handle to the cradle plate to complete the assembly using the M5 x 6 countersink screw, see adjacent

-  M5 x 6 Countersink Handle fixing
-  M4 x 6 Pan Head Cable clip fixing

Tel: (847) 266-1220