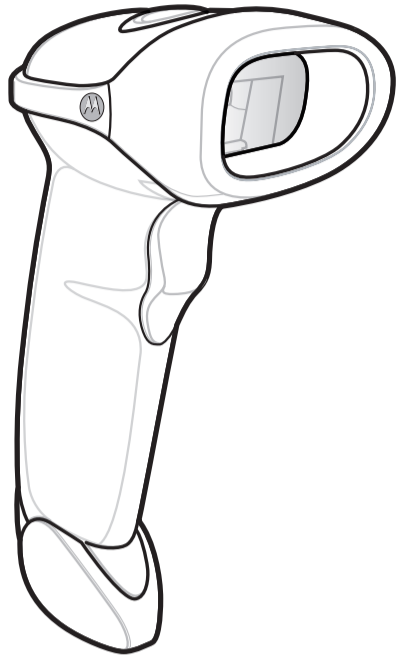


SYMBOL LS2208

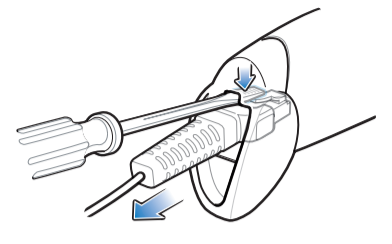
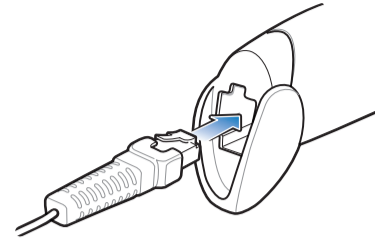
Quick Start Guide

<http://www.motorola.com/ls2208>

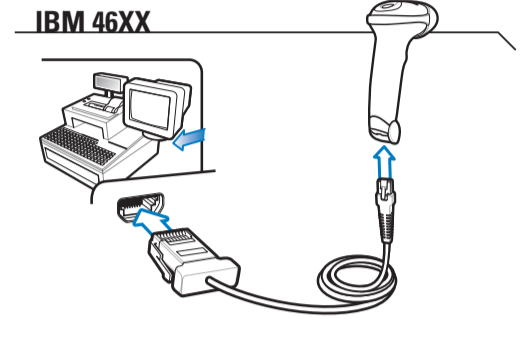
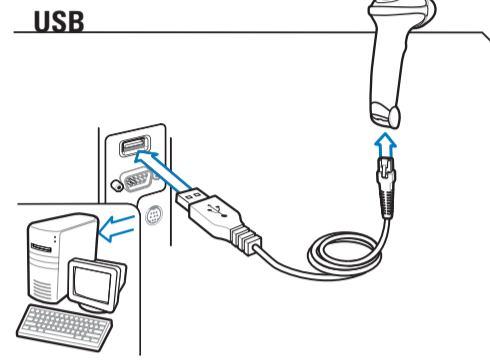
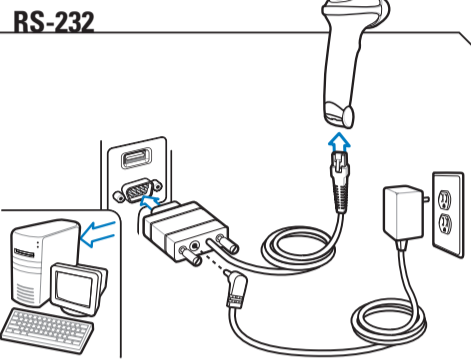


NOTE: Cables may vary depending on configuration.

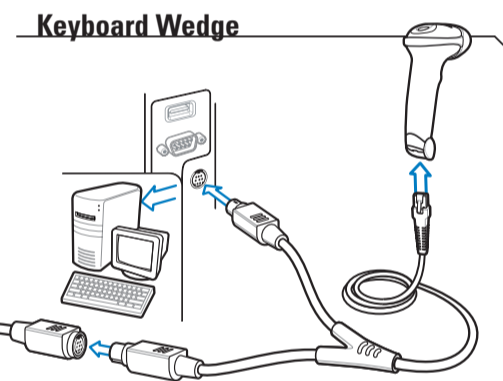
Step 1 - Cord Attachment/Removal



Step 2 - Connect to Host



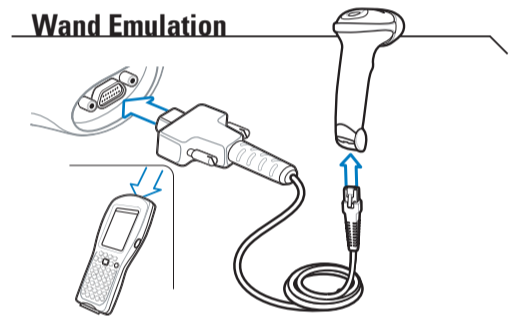
Step 3 - Scan ONE of the following



Step 3 - Scan the following



Step 3 - Scan ONE of the following



Step 3 - Scan ONE of the following



Miscellaneous Settings

Set Defaults



Carriage Return/Line Feed



LED Indications

- Off**: Scanner is on and ready to scan, or no power to scanner
- Green**: Bar code is successfully decoded
- Red**: Transmission error

Beeper Indications

Standard Use

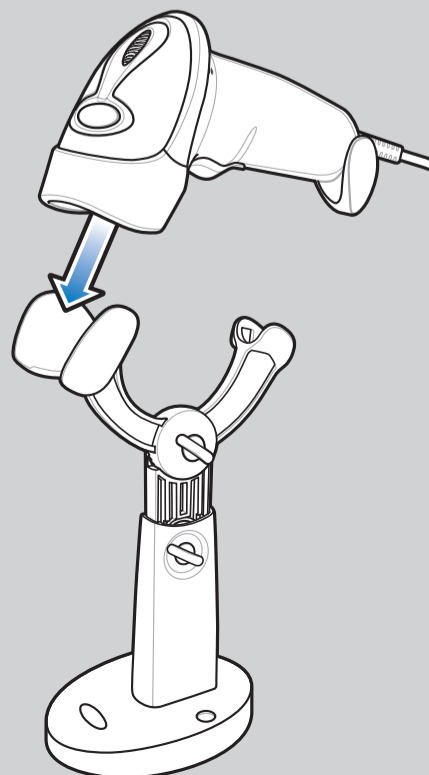
- Low/medium/high beep**: Power up
- Short medium beep**: Bar code decoded
- 4 long low beeps**: Transmission error detected, data is ignored

Parameter Menu Scanning

- High/low/high/low beep**: Successful parameter setting
- High/low beep**: Correct programming sequence performed
- Low/High beep**: Incorrect programming sequence or 'Cancel' bar code scanned

Accessories

IntelliStand



Troubleshooting

Scanner not working

- No power to scanner**: Check system power; ensure power supply, if required, is connected
- Incorrect interface cable used**: Ensure that correct interface cable is used
- Interface/power cables are loose**: Ensure all cable connections are secure

Scanner decoding bar code, but data not transmitting to host

- Scanner not programmed for correct host interface**: Scan appropriate host parameter bar codes
- Interface cable is loose**: Ensure all cable connections are secure

Scanned data incorrectly displayed on host

- Scanner not programmed for correct host interface**: Scan appropriate host parameter bar codes

Scanner not decoding bar code

- Scanner not programmed for bar code type**: Ensure scanner is programmed to read type of bar code being scanned
- Bar code unreadable**: Ensure bar code not defaced; try scanning test bar code of same bar code type
- Distance between scanner and bar code incorrect**: Move scanner closer to or further from bar code

POST IN WORK AREA

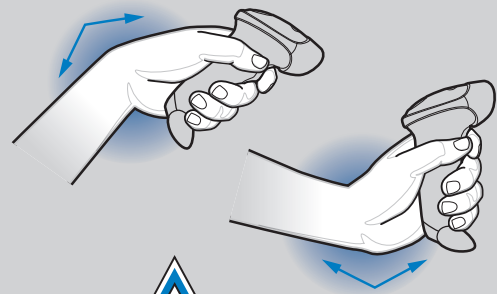
See Product Reference Guide for more information

OPTIMUM SCANNING POSITIONS

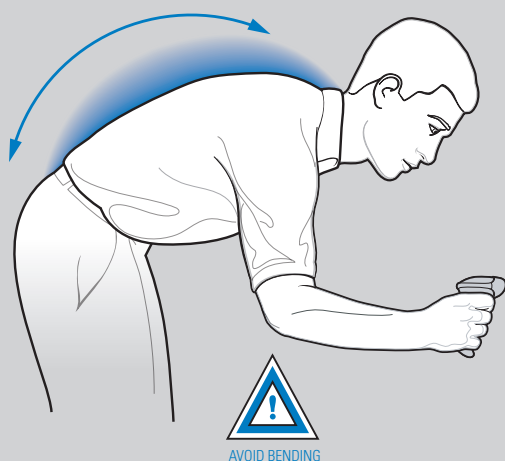


OPTIMUM UPRIGHT BODY POSTURE

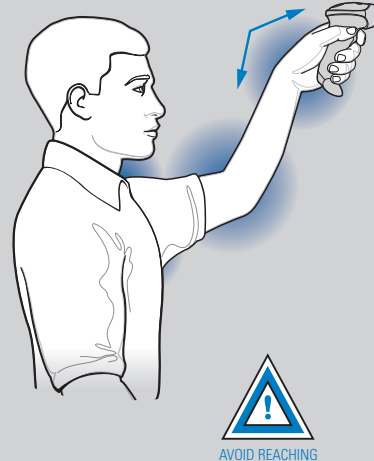
Avoid Extreme Wrist Angles



Avoid Bending



Avoid Reaching



Ergonomic Recommendations

Caution: In order to avoid or minimize the potential risk of ergonomic injury follow the recommendations below. Consult with your local Health & Safety Manager to ensure that you are adhering to your company's safety programs to prevent employee injury.

- Reduce or eliminate repetitive motion
- Maintain a natural position
- Reduce or eliminate excessive force
- Keep objects that are used frequently within easy reach
- Perform tasks at correct heights
- Reduce or eliminate vibration
- Reduce or eliminate direct pressure
- Provide adjustable workstations
- Provide adequate clearance
- Provide a suitable working environment
- Improve work procedures.

REGULATORY INFORMATION

© MOTOROLA, INC. 2008 All rights reserved. Motorola reserves the right to make changes to any product to improve reliability, function, or design. Motorola does not assume any product liability arising out of, or in connection with, the application or use of any product, circuit, or application described herein. No license is granted, either expressly or by implication, estoppel, or otherwise under any patent right or patent, covering or relating to any combination, system, apparatus, machine, material, method, or process in which Motorola products might be used. An implied license exists only for equipment, circuits, and subsystems contained in Motorola products. MOTOROLA, the Stylized M Logo and Symbol and the Symbol logo are registered trademarks of Motorola, Inc. Other product names mentioned in this manual may be trademarks or registered trademarks of their respective companies and are hereby acknowledged. Motorola, Inc. One Motorola Plaza, Holtville, N.Y. 11742-1300 • <http://www.motorola.com/enterprisemobility>

Warranty
For the complete Motorola hardware product warranty statement, go to: <http://www.motorola.com/enterprisemobility/warranty>.

Patents
This product is covered by one or more patents. For patent information go to: <http://www.motorola.com/enterprisemobility/patents>.

Service Information
If you have a problem using the equipment, contact your facility's Technical or Systems Support. If there is a problem with the equipment, they will contact the Motorola Enterprise Mobility Support at: <http://www.motorola.com/enterprisemobility/contactsupport>.

Waste Electrical and Electronic Equipment (WEEE)

English: For EU Customers: All products at the end of their life must be returned to Motorola for recycling. For information on how to return product, please go to: <http://www.motorola.com/recycling/weee>
Bulgarian: За всички от ЕС: След края на ползването или изтичането на срока на употреба всички продукти трябва да се връщат на Motorola за рециклиране. За информация относно връщането на продукта, моля посетете нас на: <http://www.motorola.com/recycling/weee>
Czech: Pro zákazníky z EU: Všechny produkty je nutné po skončení jejich životnosti vrátit společnosti Motorola k recyklaci. Informace o způsobu vrácení produktu najdete na webové stránce: <http://www.motorola.com/recycling/weee>
Danish: Til kunder i EU: Alle produkter skal returneres til Motorola til recykling, når de er udfjelt. Læs oplysningerne om returnering af produkter på: <http://www.motorola.com/recycling/weee>
Deutsch: Für Kunden innerhalb der EU: Alle Produkte müssen am Ende ihrer Lebensdauer zum Recycling an Motorola zurückgegeben werden. Informationen zur Rücksendung von Produkten finden Sie unter <http://www.motorola.com/recycling/weee>
Ελληνικά: Για πελάτες στην Ε.Ε.: Όλα τα προϊόντα στο τέλος της ζωής τους πρέπει να επιστρέφονται στην Motorola για ανακύκλωση. Για περισσότερες πληροφορίες σχετικά με την επιστροφή ενός προϊόντος, επισκεφτείτε τη διεύθυνση: <http://www.motorola.com/recycling/weee>
Eesti: EL Klientidele: kõik tooted tuleb nende eluea lõppedes tagastada taaskasutamise eesmärgil Motorola'le. Lisainformatsiooni saamiseks toote tagastamise kohta külastage palun aadressi: <http://www.motorola.com/recycling/weee>
Español: Para clientes en la Unión Europea: todos los productos deberán entregarse a Motorola al final de su ciclo de vida para que sean reciclados. Si desea más información sobre cómo devolver un producto, visite: <http://www.motorola.com/recycling/weee>
French: Clients de l'Union Européenne : Tous les produits en fin de cycle de vie doivent être retournés à Motorola pour recyclage. Pour de plus amples informations sur le retour de produits, consultez: <http://www.motorola.com/recycling/weee>
Italiano: per i clienti dell'UE: tutti i prodotti che sono giunti al termine del rispettivo ciclo di vita devono essere restituiti a Motorola al fine di consentirne il riciclaggio. Per informazioni sulle modalità di restituzione, visitare il seguente sito Web: <http://www.motorola.com/recycling/weee>

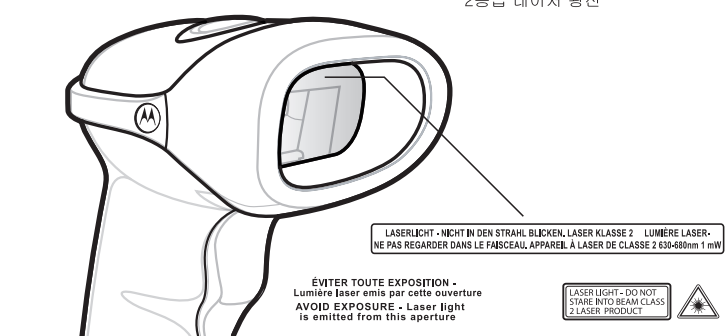
Lithuanian: ES klientams: visi produktai po to kaip pašalinę miža beigiam ir įmonaga atpaakai Motorola otrebilizacijai pabrūstade. Lai iegūtu informāciju par produktu nogādāšanu Motorola, lūdz, skatiet: <http://www.motorola.com/recycling/weee>
Magyar: Az EU-ban vásárlók: Minden termékemet lemeleket a Motorola vállalatához kell eljuttatni újrahasznosítás céljából. A termék visszajuttatásának módjával kapcsolatos tudnivalókat látogasson el a <http://www.motorola.com/recycling/weee> weboldalra.
Mal: Ghal klienit di UE: Semua produk yang telah berakhir masa pakai harus dikembalikan ke Motorola untuk daur ulang. Untuk informasi mengenai cara mengembalikan produk, kunjungi: <http://www.motorola.com/recycling/weee>
Nederlands: Voor klanten in de EU: alle producten dienen aan het einde van hun levensduur naar Motorola te worden teruggezonden voor recycling. Raadpleeg <http://www.motorola.com/recycling/weee> voor meer informatie over het terugzenden van producten.
Polski: Klienci z obszaru Unii Europejskiej: Produkty wycofane z eksploatacji należy zwrócić do firmy Motorola w celu ich użyczenia. Informacje na temat sposobu produków znajdują się na stronie internetowej: <http://www.motorola.com/recycling/weee>
Portuguese: Para clientes da UE: todos os produtos no fim de vida devem ser devolvidos à Motorola para reciclagem. Para obter informações sobre como devolver o produto, visite: <http://www.motorola.com/recycling/weee>
Română: Pentru clienții din UE: Toate produsele la sfârșitul duratei lor de funcționare, trebuie returnate la Motorola pentru reciclare. Pentru informații despre returnarea produsului, accesați: <http://www.motorola.com/recycling/weee>
Slovenian: Pre zakažnikov z krajin EU: Vseky výrobky musia byť po uplynutí doby ich životnosti vrátené spoločnosti Motorola na recykláciu. Štátna informácia o vrátení výrobkov nájdete na: <http://www.motorola.com/recycling/weee>
Svenska: Za kupce z EU: svi izdelki se morajo po potoku življenjske dobe vrniti podjetju Motorola za reciklajo. Za informacije o vračilu izdelka obiščite: <http://www.motorola.com/recycling/weee>
Suomi: Asiakkas Euroopan unionin alueella: Kaikki tuotteet on palautettava kierrätettäväksi Motorola-yhtiölle, kun tuotteen elämänsykli on päätynyt. Lisätietoja tuotteen palauttamisesta on osoitteessa <http://www.motorola.com/recycling/weee>
Turkish: For kunder inom EU: Alla produkter som uppnått sin livslängd måste returneras till Motorola för återvinning. Information om hur du returnerar produkten finns på <http://www.motorola.com/recycling/weee>

Laser Labels



In accordance with Clause 5, IEC 825 and EN60825, the following information is provided to the user:

ENGLISH KLASSE 1 KLASSE 2	CLASS 1 LASER PRODUCT LASER LIGHT DO NOT STARE INTO BEAM CLASS 2 LASER PRODUCT	HEBREW 1 מוצר לייזר רמה 1 2 מוצר לייזר רמה 2 אזהרה: אל תבטו אל תוך הוורס מוצר לייזר רמה 2	ITALIAN / ITALIANO KLASSE 1 KLASSE 2	PRODOTTO AL LASER DI CLASSE 1 LUCE LASER NON FISSARE IL RAGGIO/PRODOTTO AL LASER DI CLASSE 2	NORWEGIAN / NORSK KLASSE 1 KLASSE 2	LASERPRODUKT, KLASSE 1 LASERLYS IKKE STIRR INN ILYSSTRÅLEN LASERPRODUKT, KLASSE 2	PORTUGUESE / PORTUGUÉS KLASSE 1 KLASSE 2	PRODUTO LASER DA CLASSE 1 LUZ DE LASER NÃO FIXAR O RAO LUMINOSO PRODUTO LASER DA CLASSE 2	SPANISH / ESPAÑOL KLASSE 1 KLASSE 2	PRODUCTO LASER DE LA CLASE 1 LUZ LASER NO MIRE FJAJAMENTE EL HAZ PRODUCTO LASER DE LA CLASE 2	SWEDISH / SVENSKA KLASSE 1 KLASSE 2	LASERPRODUKT KLASS 1 LASERLJUS STIRRA INTE MOT STRÅLEN LASERPRODUKT KLASS 2	CHINESE / 简体中文 1 类 2 类	1 类激光产品 2 类激光产品 激光切勿直视光束	KOREAN 1 등급 2 등급	1 등급 레이저 제품 2 등급 레이저 광선 이 광선을 주시하지 마십시오. 2 등급 레이저 광선
--	---	---	---	--	--	---	---	---	--	--	--	---	-------------------------------------	--------------------------------	-------------------------------	---



Regulatory Information

Symbol Technologies, Inc., the Enterprise Mobility business of Motorola, Inc. ("Motorola"). All Symbol devices are designed to be compliant with rules and regulations in locations they are sold and will be labeled as required. Any changes or modifications to Symbol Technologies equipment, not expressly approved by Symbol Technologies, could void the user's authority to operate the equipment.



Laser Devices

Symbol products using lasers complies with 21CFR1040.10 and 1040.11, EN60825-1:1994+ A1:2002 +A2:2001 and IEC60825-1:1993+A1:1997+A2:2001.

The laser classification is marked on one of the labels on the product.

Class 1 laser devices are not considered to be hazardous when used for their intended purpose. The following statement is required to comply with US and international regulations: **Caution: Use of controls, adjustments or performance of procedures other than those specified herein may result in hazardous laser light exposure.** Class 2 laser scanners use a low power, visible light diode. As with any very bright light source, such as the sun, the user should avoid staring directly into the light beam. Momentary exposure to a Class 2 laser is not known to be harmful.

Radio Frequency Interference Requirements



Note: This equipment has been tested and found to comply with the limits for a Class B digital device pursuant to Part15 of the FCC rules. These limits are designed to provide reasonable protection against harmful interference in a residential installation. This equipment generates uses and can radiate radio frequency energy and, if not installed

and used in accordance with the instruction manual, may cause harmful interference to radio communications. However there is no guarantee that interference will not occur in a particular installation. If this equipment does cause harmful interference to radio or television reception, which can be determined by turning the equipment off and on, the user is encouraged to try to correct the interference by one or more of the following measures:

- Reorient or relocate the receiving antenna
- Increase the separation between the equipment and receiver
- Connect the equipment into an outlet on a circuit different from that to which the receiver is connected
- Consult the dealer or an experienced radio/TV technician for help.

Radio Frequency Interference Requirements - Canada

This Class B digital apparatus complies with Canadian ICES-003. Cet appareil numérique de la classe B est conforme à la norme NMB-003 du Canada.

Marking and European Economic Area (EEA)



Statement of Compliance

Symbol Technologies, Inc., hereby declares that this device is in compliance with all the applicable Directives, 89/336/EEC, 73/23/EEC. A Declaration of Conformity may be obtained from <http://www.motorola.com/enterprisemobility/doc>

Japan (VCCI) - Voluntary Control Council for Interference

この装置は、情報処理装置等電波障害自主規制協議会 (VCCI) の基準に基づくクラス B 情報技術装置です。この装置は、家庭環境で使用することを目的としていますが、この装置がラジオやテレビジョン受信機に近接して使用されると、受信障害を引き起こすことがあります。取扱説明書に従って正しい取り扱いをして下さい。 This is a Class B product based on the standard of the Voluntary Control Council for Interference from Information Technology Equipment (VCCI). If this is used near a radio or television receiver in a domestic environment, it may cause radio interference. Install and use the equipment according to the instruction manual.

MOTOROLA
Motorola, Inc. One Motorola Plaza Holtville, New York 11742, USA
1-800-927-9626 <http://www.motorola.com/enterprisemobility>



72-71882-01
Rev C November 2008

<http://www.motorola.com/ls2208>

MOTOROLA and the Stylized M Logo and Symbol and the Symbol logo are registered in the U.S. Patent and Trademark Office. All other product or service names are the property of their respective owners. © Motorola, Inc. 2008