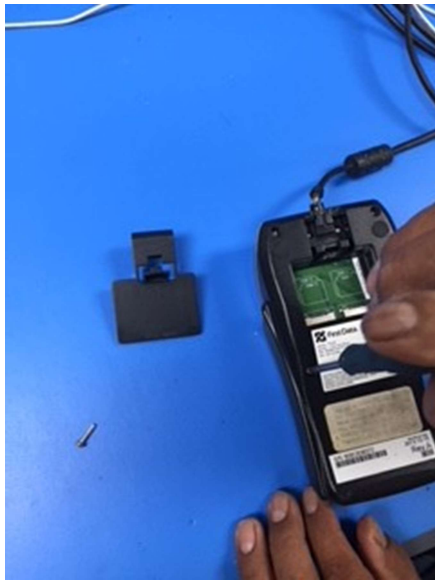


How to replace the cord on an FD-35 PINpad.

You **WILL NOT** lose the encryption when you replace the cord.
You **WILL NOT** tamper the device when you replace the cord.

Some things are easier with pictures.

Follow the pictures to take off the old cord, and follow them in reverse to put the new cord on.



Remove small cover.



Remove the four corner screws.



**Separate the two parts.
(Grey and black)**



**Unplug the white cable. Pull from
the white part. Be careful not to
strip the cables out.**



Remove the two screws of cord.



**Unwrap the cord from the back.
Untangle the cord, remove the clips, and pull through the hole.
You did it! Now replace the cable, and rewind.**

