

# PP-9132W



PP-9132W is a fanless modular All-in-One panel PC. It equipped RK-3568 processor to operate by Android OS. With MicroSD card slot, memory adding and access is extremely easy!

## 01/ 22" Fanless Panel PC

AerPPC PP-9132W is an ultra slim modular All-in-One panel PC. It's fanless design offer you a silent and dust free operating environment.

- Platform: Android OS
- Processor: RK-3568 Quad-Core Cortex A55
- System Storage: 64GB eMMC ; External Micro SD



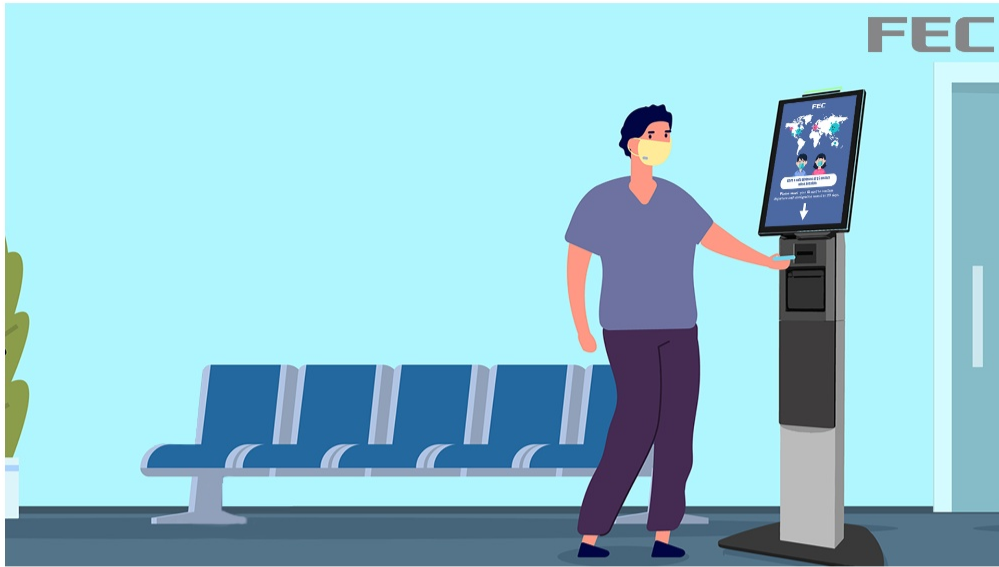
## 02/ Digital Information Signage

No matter using AerPPC or AerMonitor, FEC 22 inch series are beautiful displays with high resolution screens. With universal VESA wall mount design, they can be easily mounted on any flat surface!



## 03/ Large Enterprise Environment

Large screen All in One Android Panel PC is perfected for digital signage, product display, industrial control system or apply with self-ordering system.

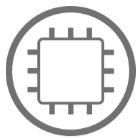


## 04/ FEC ANDROID

FEC provides a complete series of Android POS. From 10" to 22" in for lightweight usage, wall-mount as digital display or with stand for different types of POS terminals.



# Specifications



## CPU

- Rock chip RK-3568 Quad-core Cortex-A55 up to 2.0GHz



## Memory

- 4GB DDR3 On Board



## Storage

- 64GB Built-in eMMC



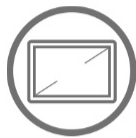
## Connection

- WIFI 802.11 ac & BT 4.2 (Optional)



## Speaker

- 2 x 2W Internal Speaker



## Display

- 22" TFT, 1920 x 1080



## Touch

- True-Flat PCAP



## Brightness

- 250 nits



## MTBF

- 50K Hours



## Camera

- 2MP Front Camera (Optional)



## Power

- 20V / 90W or 20V / 130W External Adapter



## OS

- Android 12



## Mounting

- VESA 100 x 100 mm



## Certification

- FCC / CE Class B



## Appearance

- Aluminum Die-casting + Plastic
- Black with Silver Trim



## Temperature

- Operation: 0 °C ~ 40 °C (32 °F ~ 104 °F)
- Storage: -20 °C ~ 60 °C (-4 °F ~ 140 °F)



## Dimensions (W x H x D)

- Product: 513 x 309 x 45 mm
- Carton: 662 x 440 x 210 mm



## Weight

- Net 5.7 kg
- Gross 7 kg



## Port

- 1 x 20V DC Input
- 1 x RJ45 Gigabit LAN
- 1 x Video Port
- 1 x RJ11 Cash Drawer (12V or 24V)
- 1 x SD/TF Card Slot (Max: 128GB)
- 1 x Recovery button
- 2 x USB 2.0, 1 x USB 3.0, 1 x USB 3.0 (OTG)
- 2 x RJ45 (COM1, COM2) RS232 (0V/5V/12V)



## Optional

- 2 x USB 2.0
- 1 x DB9 (COM3)
- 1 x 24V DC Output