



Suburban

NAUTILUS ON DEMAND WATER HEATER



Enjoy endless hot water with Suburban's NAUTILUS On Demand RV Water Heater. Say "good-bye" to waiting for water to reheat in a conventional tank. Showers and baths are best enjoyed slowly, so live free from the restraints of limited hot water supplies. Dishes and even the laundry can be done with an infinite supply of hot water whenever and wherever, simultaneously from every fixture.

With no storage tank to heat water, the NAUTILUS On Demand RV Water Heater reduces weight and increases efficiency by only operating when the need for hot water arises.

The NAUTILUS On Demand RV Water Heater uses an exclusive 60,000 BTU 2-Stage Modulating Combustion System (MCS) which instantaneously adjusts the LP gas input to provide consistent and endless comfort regardless of your hot water needs.

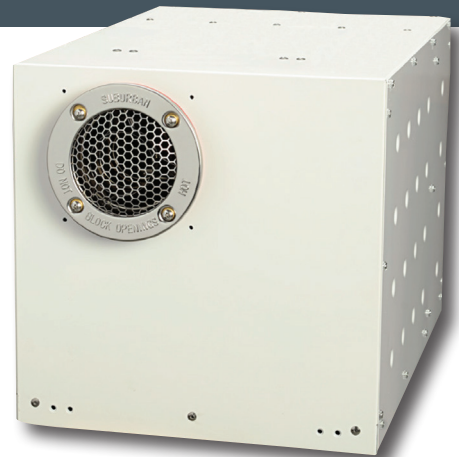
950-03000

**Suburban's NAUTILUS On Demand Water Heater
- developed with INDUSTRY-BEST:**

- » Exclusive 60,000 BTU Two-Stage Self Modulating Combustion System
- » Built-In Freeze Protection
- » Only 16.3kg Installed (including optional accessories)
- » Two-Year Warranty

The EXCLUSIVE 2-Stage Modulating Combustion System (MCS) Monitors:

- » Inlet water temperature
- » Inlet water flow
- » Output water temperature
- » Combustion air fan speed
- » Heat exchanger & burner operation



coastrv.com.au



Coast to Coast
CARAVAN & LEISURE

coastrv.co.nz

| For more information visit www.CaravanMods.com.au | (02) 9806 3055 |

Suburban Nautilus Control Centre
(Sold Separately)

The ON DEMAND CONTROL CENTER provides precise temperature control, reliable and consistent comfort from the convenience of your RV.

950-03500
White

950-03502
Black



Suburban Nautilus Vents
(Sold Separately)

A Suburban replacement panel and vent cap are required when replacing Suburban 6, 10, 12, and 16 gallon tank units with the NAUTILUS On Demand RV Water Heater.

950-03504
Suburban Nautilus Vent For 0 - 2.5cm
(0 - 1 inches) Wall Thickness

950-03506
Suburban Nautilus Vent For 2.5-5.0cm
(1 - 2 inches) Wall Thickness

950-03508
Suburban Nautilus Vent For 5.0-7.6cm
(2 - 3 inches) Wall Thickness



Suburban Nautilus Access Doors
(Sold Separately)

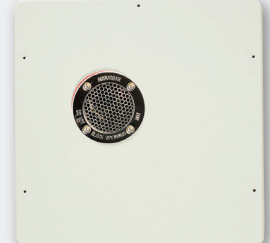
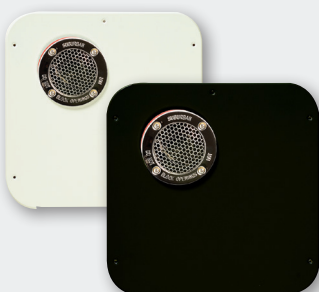
Please note: The images below are shown with the vent cap installed for illustration purposes only. Replacement Panels and Vent caps are sold separately. The Suburban 10 Gallon Replacement panel is used for 10, 12 or 16 gallon capacity unit installations.

6 GAL
950-03510
White
950-03512
Black

10 GAL
950-03514
White
950-03516
Black

6 GAL Atwood
950-03518
White

10 GAL Atwood
950-03520
White



Installation Configuration Examples

The NAUTILUS On Demand RV Water Heater from Suburban is a truly adaptable platform that offers a variety of installation options to suit your needs. The below configurations examples demonstrate the NAUTILUS system's industry leading versatility.

Example Configuration 1

The minimum specification install of the Nautilus system required only the system itself and a single vent to suit your vehicles wall thickness. Please note that the unit should be installed as close to wall as possible.



Example Configuration 2

The maximum specification install of the Nautilus system requires the system itself, the Nautilus Control Centre (available in black or white), a single vent to suit your vehicles wall thickness and a single access door.



PERFORMANCE SPECS	SUBURBAN NAUTILUS
Model	Nautilus IW60A, 5187A
Maximum Mj/Hr	64 (5) burners
Two-Stage Self Modulating Combustion System	YES Stage 1 Operation: 2 Burners Stage 2 Operation: 5 Burners
Fuel Source	Universal LP Gas
Dry Weight	15 kg Optional accessories 1.3kg shipping weight
12 VDC = AMPS	2.1 AMPS
Operational Voltage Range	10.2 - 14.5 VDC
MAXIMUM Output Water Temperature	50°C
Output Water Temperature - Factory Setting	50°C
Digital Control Center Temperature Range	35° - 50° (C)
Liters Per Minute (LPM) Required Flow	1.9 LPM
Heating Capacity	7.6L/min at 28° C Rise
Warranty	2 - Year
Product Dimensions	316.6 mm W x 317.8 mm H x 464.9 mm D (includes inlet & discharge water lines)

WATER TEMP. HEAT GAIN FROM INCOMING WATER TEMP.

INPUT WATER TEMP	LPM	OUTPUT WATER TEMP	GAIN
10°	5.7	48°	38°
	7.6	38°	28°
	11.4	29°	19°
15°	5.7	48°	33°
	7.6	43°	28°
	11.4	35°	20°
21°	5.7	50°	29°
	7.6	49°	28°
	11.4	39°	18°



DISTRIBUTED IN AUSTRALIA AND NEW ZEALAND BY:



Coast to Coast
CARAVAN & LEISURE

coastrv.com.au | coastrv.co.nz

Specifications are correct at time of printing and are subject to change without notice.

DEALER / SUPPLIER