

SMARTCONNECT

RANGE OF SENSORS FOR YOUR RV



SMARTSENSE

MEASURES
LEVEL OF LPG



SMARTPRESSURE

MONITORS
TYRE PRESSURE



SMARTTEMP

MONITORS
TEMPERATURES
INSIDE & OUT



JHUB

ODYSSEY



THIS PACK CONTAINS

1x SmartSense **2x SmartPressure**
1x SmartTemp **1x ToolKit**

 **TEAM
BM PRO
.COM**

SYSTEM REQUIREMENTS: BM PRO ControlNode103
or BM PRO OdysseyLink103 or later

INSTALLING YOUR SMARTSENSE GAS SENSOR

1. If using as a part of JHub / Odyssey*, press SmartConnect to navigate to SmartSense screen.
2. Press "Add" to add a sensor, then press "Pair" button. While the app is scanning, press the orange SYNC button on the sensor.



Fig 1

3. If using SmartSense independently, search for **BMPRO SmartSense** in your app store and install on your device. (Fig 1)



Fig 2

4. Launch the app and press the orange SYNC button. (Fig 2)
5. Wipe the base of your gas bottle to remove any dirt or debris.
6. The sensor mounts to the base of the gas bottle using magnets. The black rubber pad on the sensor, between the magnets, should align with the centre of the gas bottle. With the pad aligned, attach the sensor to the gas bottle. (Fig 3,4,5)
7. Return the gas bottle to its upright position and ensure it's on a flat, even surface and is level with ground. Even a slight tilt can reduce the accuracy of the measurement.
8. It may take a few minutes for the contents to settle and the reading to stabilise.

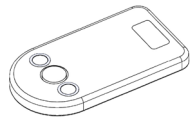


Fig 3

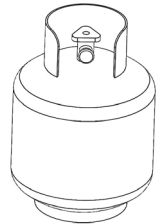


Fig 4

* JHub or Odyssey installed in your RV or mobile app on the smartphone. SmartSense is compatible with all devices that have Bluetooth 4.0+ Low Energy (BLE).

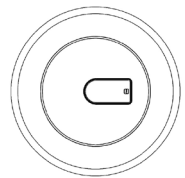


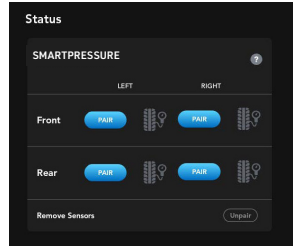
Fig 5

INSTALLING YOUR SMARTPRESSURE

1. In your JHub or Odyssey app*, press SmartConnect to navigate to SmartPressure screen.
2. To pair the SmartPressure sensor, press the "Pair" button at the location where you want to install the SmartPressure sensor.
3. After pressing the "Pair" button, install SmartPressure sensor on the corresponding tyre.
4. Once the sensor detects tyre pressure and pairing is successful, the tyre icon will change to white, the pressure and temperature levels will be displayed and the "Unpair" button under the sensor will be functional. You can then Pair or Unpair the pressure sensor or press "Done" to return to the screen where all tyre pressures are displayed.



1.



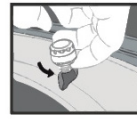
2.



Screw the anti-theft nut



Tighten sensor



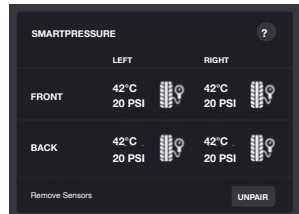
Screw anti-theft nut anticlockwise to fix sensor



Tighten anti-theft nut with a wrench

3.

* Jhub or Odyssey installed in your RV or mobile app on the smartphone. SmartPressure is compatible with all devices that have Bluetooth 4.0+ Low Energy (BLE).



4.

INSTALLING YOUR SMARTTEMP

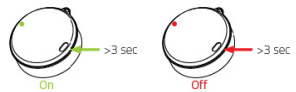
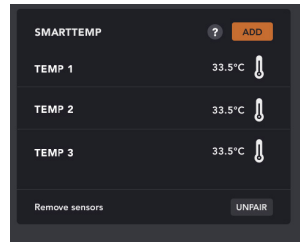
1. In your JHub or Odyssey app*, press SmartConnect to navigate to SmartTemp screen.
2. To pair the SmartTemp sensor, press the "Add" button, then press the "On" button on SmartTemp sensor. When the green light flashes on SmartTemp sensor, press "Pair" and select the sensor name from the drop-down menu provided, then press "Ok".
3. Once pairing is successful, the temperature is displayed along with its allocated name and the "Unpair" button under the sensor. Add more temperature sensors or "Unpair" a sensor already paired. Press "Done" to return to the screen where the temperatures are displayed.

It is possible to install up to four sensors.

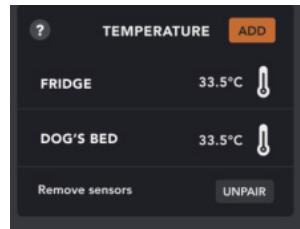
* Jhub or Odyssey installed in your RV or mobile app on the smartphone. SmartTemp is compatible with all devices that have Bluetooth 4.0+ Low Energy (BLE).



1.



2.



3.

SPECIFICATION

Voltage	3VDC
Type of battery	CR 2477
Battery lifespan	2 years
Weight	19g
Size	39 x 39 x 14 mm
Min. temp.	-20 °C
Max. temp.	+60 °C

For more information, visit teambmpro.com/smartconnect