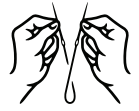
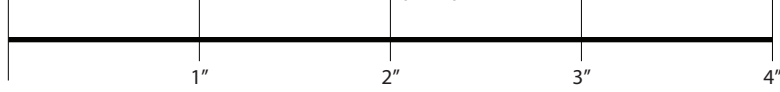


Popov Lunchbag

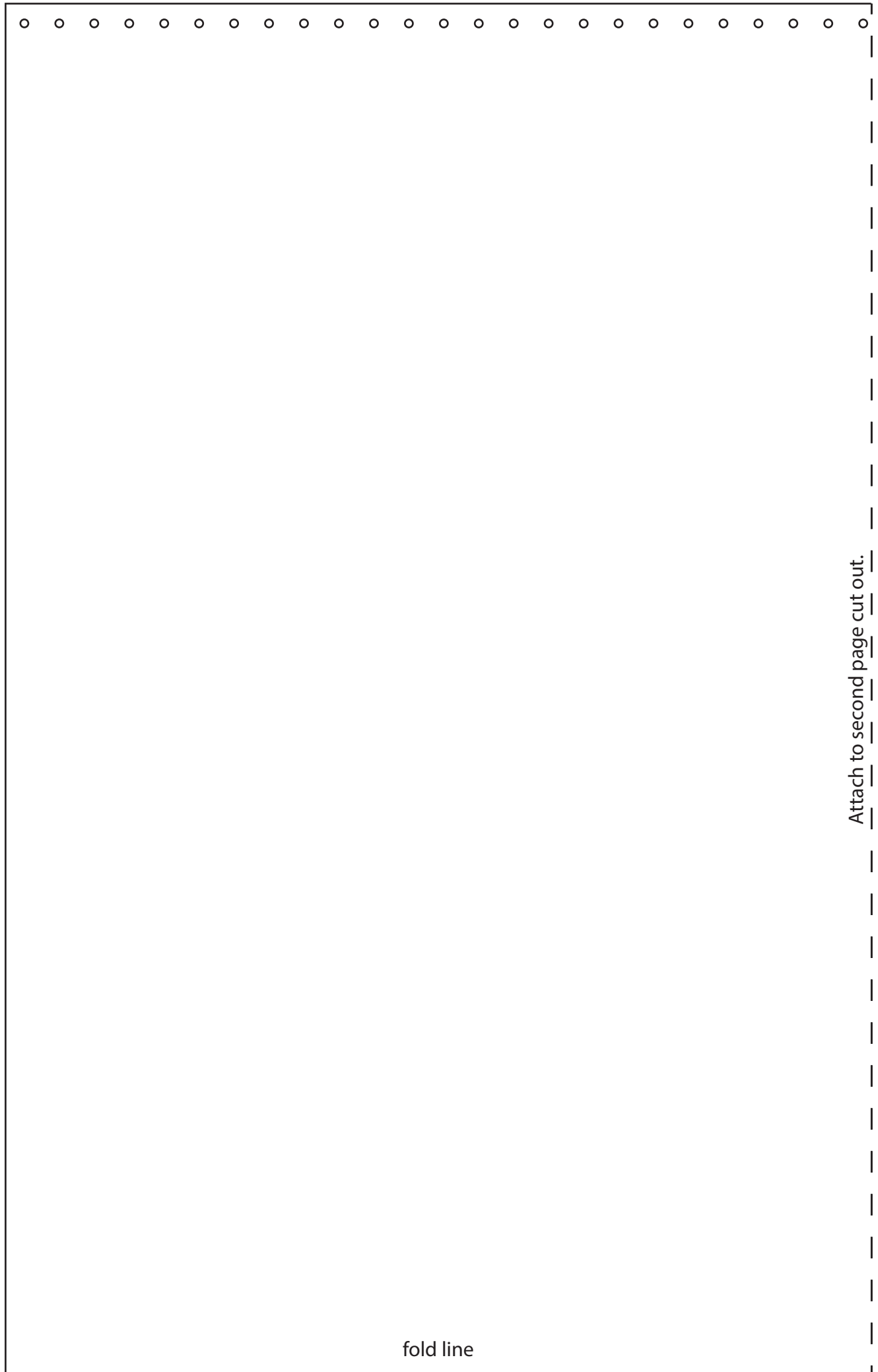


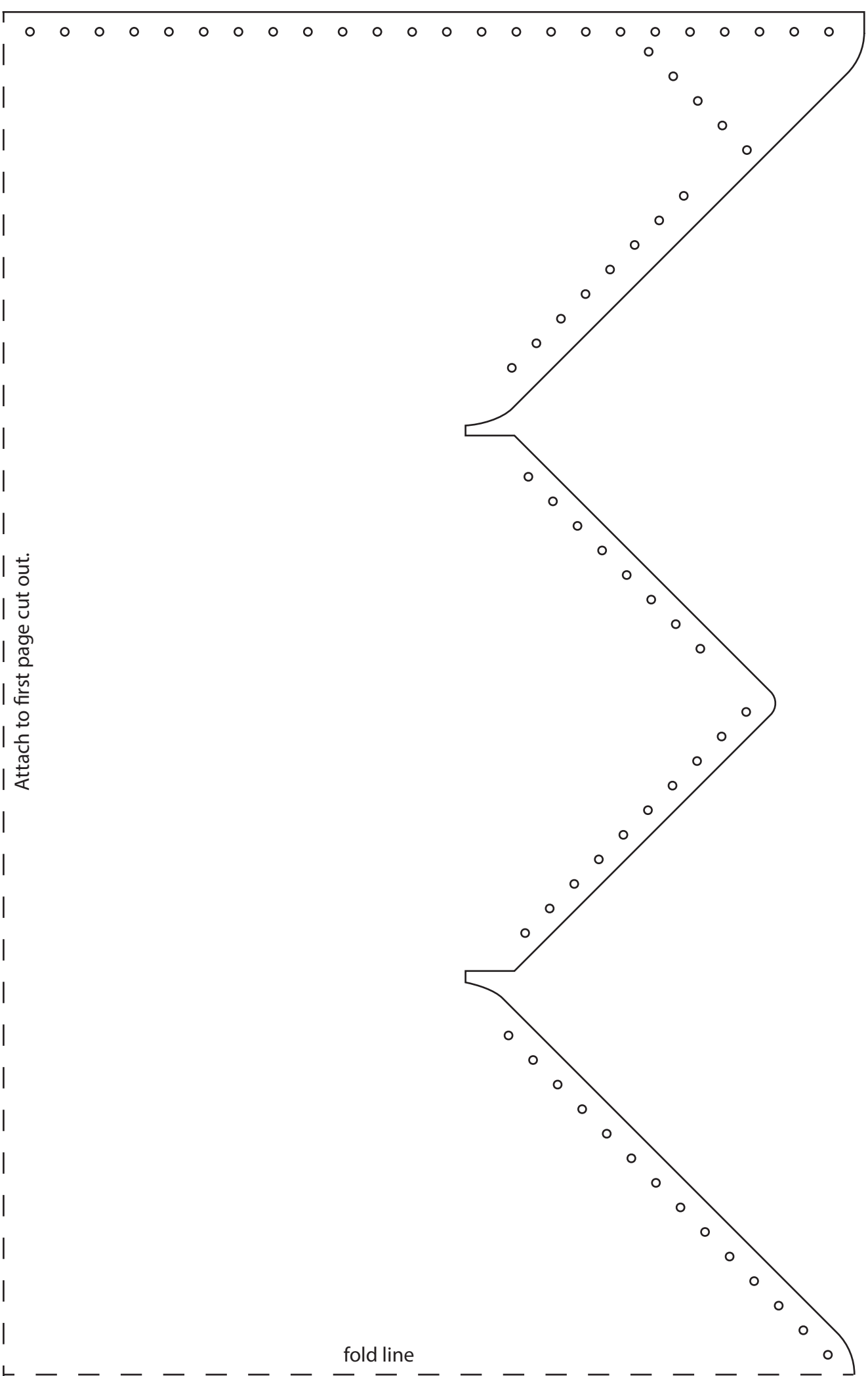
POPOV LEATHER
HANDMADE SINCE 2013

- Print 1 copy in Portrait 100% scale **LEGAL PAPER**
- Use this ruler to check for proper measurement



- Connect the two cutouts together.
- Use a 1.5mm punch to punch out sewing holes.
- Follow the video for assembly and sewing instructions.





Attach to first page cut out.

fold line