



SE 675

Installation , Maintenance and Operating Instructions

Manufactured in Australia to comply with AS4775-2007.

DESCRIPTION

Floor mounting EMERGENCY DELUGE SHOWER and AERATED EYE WASH combination unit. Shower is supplied with a 25mm stay open full flow ball valve, activated by a triangle pull rod. Eye Wash is supplied with a 15mm stay open full flow ball valve, activated by hand push flag handle.

SHOWER

SHOWER HEAD : 200mm ABS Cyclac
VALVE : 25mm 316 S/Steel
ACTIVATOR : 304 S/Steel Tubular Pull Rod
STANCHION : 304 Stainless Steel

EYE WASH

EYE WASH : Aerated
VALVE : 15mm 316 S/Steel
ACTIVATOR : Stainless Steel

INSTALLATION

After unpacking carton, make sure all components are present. Mark out the floor and mount the bottom stanchion section using suitable anchors. Then assemble top section (Use pipe sealant on all joints). Assemble pull rod and shower head, attach paddle handle and foot pedal. Once the unit is completely assembled connect water supply to 25mm top inlet nipple. Failure to use potable can result in emergency units producing impure or contaminated water causing possible further injury. Test unit

NOTE: This unit should be connected to an uninterrupted source of potable water, no less than 25mm with minimum flowing pressure of 130KPa and a maximum static pressure of 860KPa.

TESTING PROGRAM

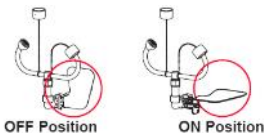
The Australian Standards AS4775-2007 states that all safety equipment shall be activated on a weekly basis to flush the line and verify proper operation. All units furnishes a testing tag (SE TAG) with each unit. On this tag the date of the inspection and the inspectors initials should be noted.

OPERATION

The SHOWER is activated by pulling the triangle pull rod. Once the valve is activated the head will continue to discharge water until the valve is manually closed, this is done by pushing the pull rod to the off position.

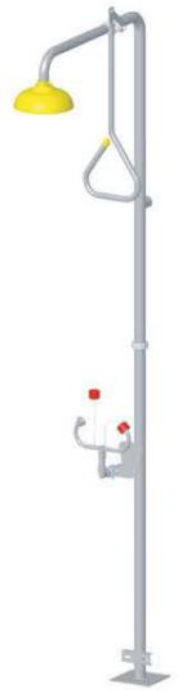
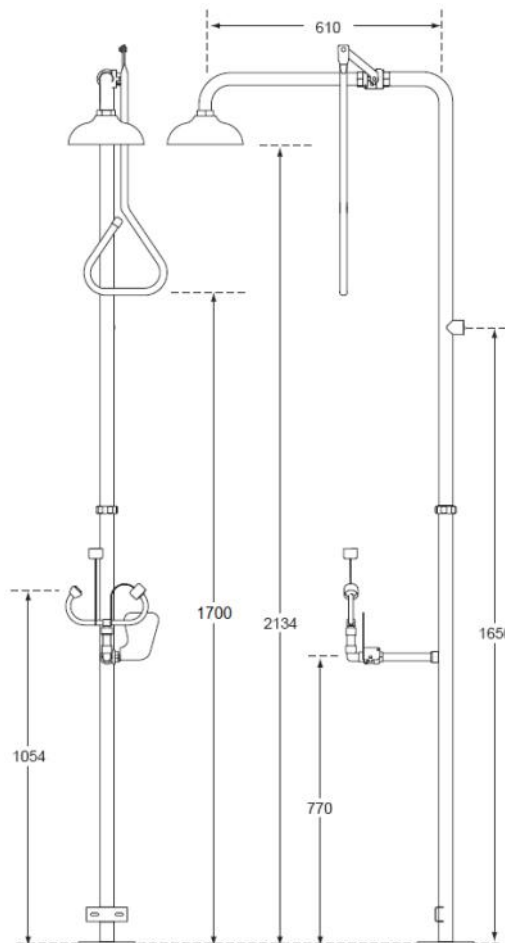
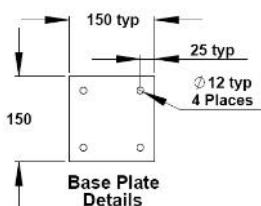


The EYE WASH is activated by pushing the paddle handle back 90 degrees. The unit will operate until the paddle handle is manually pulled to the off position.



FLOW DATA

EYE WASH
FLOW RATE (LPM) : 20
SHOWER
FLOW RATE (LPM): 76



SPEAKMAN
SAFETY PRODUCTS

SE 675
Combination Safety Shower
& Eye Wash

BIGsafety
big-safety.com.au

WARNING : Use only genuine Speakman parts when replacing or repairing components. When ordering quote correct part numbers listed.

BIG Safety
PO Box 2117 Normanhurst NSW 2076
12A/10 Pioneer Ave, Thornleigh NSW 2120

P: 1300 73 22 74
E:- sales@big-safety.com.au
www.big-safety.com.au

Installation , Maintenance and Operating Instructions

MAINTENANCE

Maintenance should be carried out weekly and yearly as detailed in the schedule. Should you need to repair this unit, please reference the spare parts list for correct part numbers. Before any maintenance is done **be sure the water supply is shut off.**

MAINTENANCE SCHEDULE

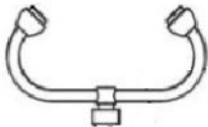
- WEEKLY**
- Activate eyewash unit using push handle.
 - Allow water to flow for 30 seconds to flush line.
 - Ensure water flows evenly from both outlets.
 - Ensure water is clean.
- YEARLY**
- Ensure unit complies with AS 4775-2007.

- 1** Part No: RPG05 1177 Aerator Screens & Caps

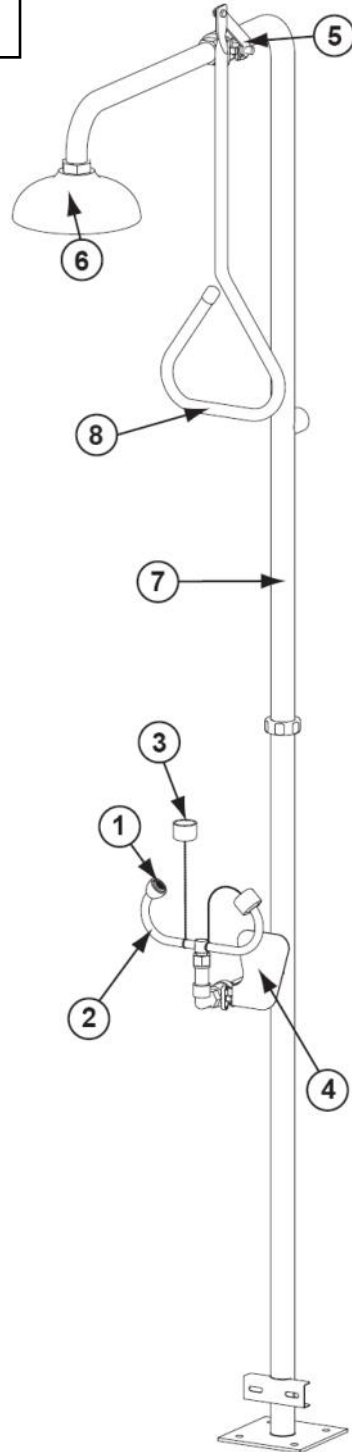


Sold in packet of 6

- 2** Part No: SA 01003



Complete Bull Horn Assembly



SPARE PARTS LIST

No	Description	Part No
1.	Aerator Screen & Cap Assembly	RPG05 1177
2.	Bull Horn Eye Wash Assembly	SA 01003
3.	Dust Cap & Chain	SA 01008
4.	15mm Activation Ball Valve	SE 910H
5.	25mm Ball Valve & Lever	SE 911
6.	200mm Cyclac Shower Head	SE 810
7.	Stanchion Frame	SE Frame
8.	Pull Rod Assembly	SA 02008

WARNING : Use only genuine Speakman parts when replacing or repairing components. When ordering quote correct part numbers listed.

BIG Safety
 PO Box 2117 Normanhurst NSW 2076
 12A/10 Pioneer Ave, Thornleigh NSW 2120

P: 1300 73 22 74
E:- sales@bigsafety.com.au
www.bigsafety.com.au



SPEAKMAN®
 SAFETY PRODUCTS

SE 675
 Combination Safety Shower
 & Eye Wash

BIGsafety
 bigsafety.com.au