



SE 480

Installation, Maintenance and Operating Instructions

Manufactured in Australia to comply with AS 4775 - 2007.

DESCRIPTION

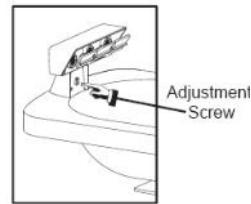
Pedestal mounted EMERGENCY AERATED EYE FACE WASH unit. Eye face wash is supplied with a 15mm stay open full flow ball valve, activated by hand push hand flag handle and foot pedal.

SPECIFICATIONS

EYE FACE WASH - Aerated,
VALVE - 15mm 316 Stainless Steel
ACTIVATOR - 304 Stainless Paddle Handle
PEDESTAL FRAME - 304 Stainless Steel
BOWL - Stainless Steel

INSTALLATION

After unpacking carton, ensure all components are present. Mark out the floor as per base plate detail. Mount the unit to the wall using suitable fasteners. Fit activation handle and connect cable. Prior to connecting the water supply flush the pipe line to clear of impurities and debris. Connect water supply to 20mm connection below the volume control. Turn water supply on and assure all connections are water tight. Activate the unit and adjust spray pattern to balance centrally in the basin. (This is done by turning the adjustments screw on volume control below valve).



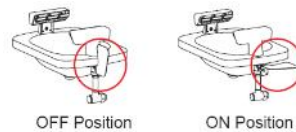
NOTE : This unit should be connected to an uninterrupted source of potable water, no less than 20mm with a minimum flowing pressure of 130KPa and a maximum static pressure of 860 KPa.

TESTING PROGRAM

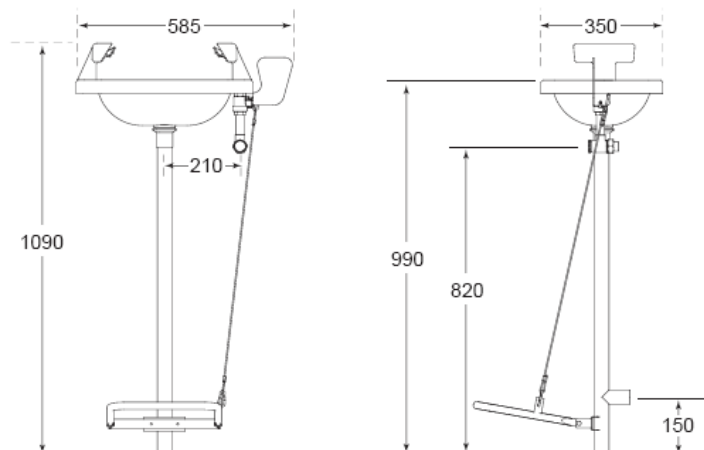
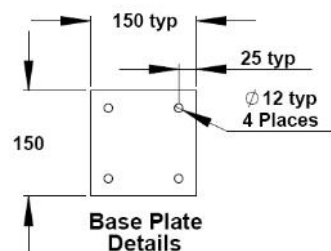
The Australian AS 4775-2007 and ANSI states that all safety emergency equipment shall be activated on a weekly basis to flush the line and verify proper operation. All units furnishes a testing record tag (SE Tag) with each unit. On this tag the date of inspection and the inspectors initials should be noted.

OPERATION

The eye face wash is activated by pushing the paddle handle back 90 degrees. The unit will operate until the paddle handle is manually pulled back to the off position.



FLOW DATA
EYE FACE WASH
FLOW RATE (LPM) : 36



WARNING : Use only genuine Speakman parts when replacing or repairing components. When ordering quote correct part numbers listed below.

BIG Safety
PO Box 2117 Normanhurst NSW 2076
12A/10 Pioneer Ave, Thornleigh NSW 2120

P: 1300 73 22 74
E:- sales@bigsafety.com.au
www.bigsafety.com.au

SPEAKMAN®
SAFETY PRODUCTS

SE 480
Pedestal Mounted Aerated
Eye Face Wash Unit

BIGsafety
bigsafety.com.au



Installation, Maintenance and Operating Instructions

MAINTENANCE

Maintenance should be carried out weekly and yearly as detailed in the schedule. Should you need to repair this unit, please reference the spare parts list for correct part numbers. Before any maintenance is done **be sure the water supply is shut off.**

MAINTENANCE SCHEDULE

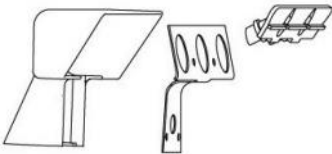
- WEEKLY** Activate eye wash unit using push handle
 Allow water to flow for 30 seconds to flush line.
 Ensure water flows evenly from both Outlets.
 Ensure water is clean.
- YEARLY** Ensure unit complies with AS 4775 - 2007

- ① Part No RPG05 1177

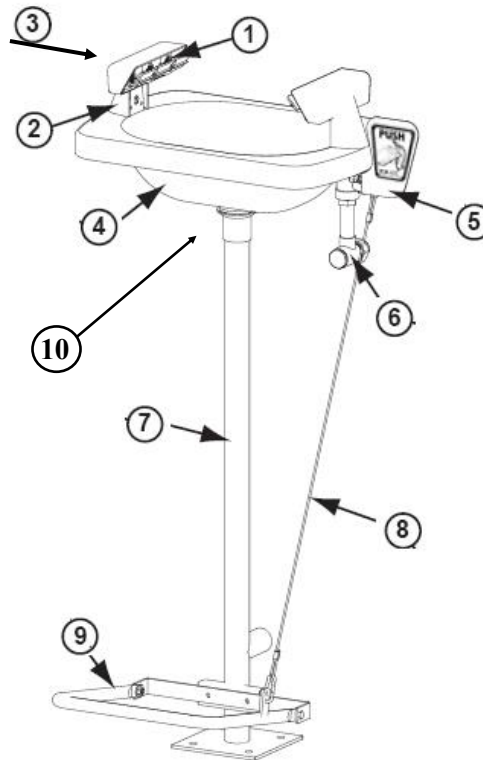


Sold in a packet of 6

- ② Shroud Cover - G10-0041



- ③ Complete Shroud Body



SPARE PARTS LIST

No.	Description	Part No.
1.	Aerator Screen and Cap Assembly	RPG05 1177
2.	Shroud Assembly Repair Kit	G10 0041
3.	Complete Shroud Body Assembly	G10-0042
4.	Stainless Steel Bowl	68 0033
5.	15mm Ball Valve and Handle	SE 910V
6.	In Line Strainer Gauze	G21 0080
7.	Pedestal Frame	SA 01001
8.	Universal Connect Chain	SA 03014
9.	Foot Pedal & Connection Chain	SA 03001

WARNING : Use only genuine Speakman parts when replacing or repairing components. When ordering quote correct part numbers listed below.



SPEAKMAN®
SAFETY PRODUCTS

SE 480
Pedestal Mounted Aerated
Eye Face Wash Unit

BIGsafety
big-safety.com.au

BIG Safety
PO Box 2117 Normanhurst NSW 2076
12A/10 Pioneer Ave, Thornleigh NSW 2120

P: 1300 73 22 74
E:- sales@big-safety.com.au
www.big-safety.com.au