

CP2
1-Trigger-2
Wireless Phone Microphone

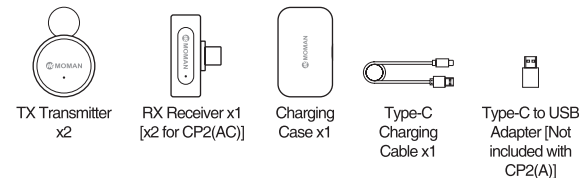
User Manual

Thank you for choosing MOMAN product. Please read this manual carefully before use and follow all instructions mentioned herein.

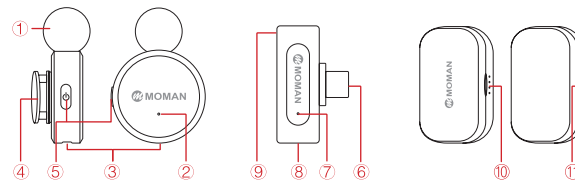
Caring For Your MOMAN Product

- Please keep the product in a dry, clean, dust-free environment.
- Keep corrosive chemicals, liquids and heat source away from the product to prevent mechanics damage.
- Use only a soft and dry cloth for cleaning the product.
- Malfunction may be caused by dropping, impact of external force.
- Do not attempt to disassemble the product. Doing so voids warranty.
- Please have the product checked or repaired by authorized technicians if any malfunctions happened.
- Failure to follow all the instructions may result in mechanics damage.
- Warranty does not apply to human errors.

Package List



Product Introduction



Transmitter

- ① Foam Windscreen
- ② Transmitter Indicator Light
- ③ Transmitter Charging Port
- ④ Clip
- ⑤ Power/Mute Button

Receiver

- ⑥ Phone Connector (Type-C or Lightning)
- ⑦ Receiver Indicator Light
- ⑧ Type-C or Lightning Port
- ⑨ Strap Hole

Charging Case

- ⑩ Charging Case Indicator
- ⑪ Type-C Charging Port

Indicator- TX Transmitter

Function/Status	Light
Power on	● Green keeps ON
Power off	●● Green flashes twice and OFF
Pairing	●●● Green flashes fast
Paired	● Green keeps ON
Mute	● Blue keeps ON
Unmute	● Blue OFF, Green ON
Low battery alarm	●●● Blue flashes slowly
Charging	● Red ON, OFF after fully charged

Indicator- RX Receiver

Function/Status	Light
Power on	● Green keeps ON
Power off	○ OFF
Pairing	●●● Green flashes slowly
Paired	● Green keeps ON

Indicator- Charging Case

Function/Status	Light
Charging	●○○○ Green flashes. The flashing light moves in proportion to the charge until it is fully charged.
Left Battery	●○○○ One is ON (e.g. one gauge battery left)

Operation

TX

1. Power On/Off

On: Press the Power/Mute Button once.

Off: Long press the Power/Mute Button for 3s.

2. Pairing

With two transmitters ON, plug the receiver into device and the system will pair automatically.

※ If the TX and RX are not connected or you need to replace the RX, re-pairing is required.

(1) With one TX ON, long press the Power/Mute Button for 8s until the the green light flashes quickly. Plug in the RX until the green light is on.

(2) Plug out the RX. Follow step(1) to pair the other TX and plug in the RX again until the green light is on. When indicators of both TX show green, two-transmitter-one-receiver pairing is successful.

Note: Before TX pairing, do not plug RX into device and power it. Otherwise, the pairing may not be successful.

3. Mute

After pairing, press the Power/Mute Button once to mute. Press it again to cancel mute.

4. Charging

Place the TX in the case with contacts connected with the case's OR charge them via charging cable. Please fully charge the TX transmitter with charging cable before use.

● RX

1. Power On/Off

On: Plug in the device

Off: Plug out of the device

2. Connecting

Connect the receiver to phone.

※ Use the Type-C to USB Adapter to connect with computer.

※ OPPO/VIVO/IQOO/Realme mobile phones can be used normally only when OTG function (please search "OTG" on the settings) turns on.

3. Pairing

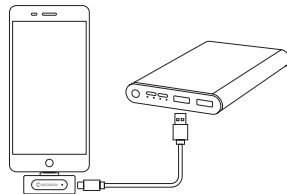
With two transmitters ON, plug the receiver into device and the system will pair automatically.

4. Charging

There is no battery in RX receiver and no need to recharge during live. If the

phone is low power during live, it can be recharged directly through the Type-C or Lightning port on the RX receiver.

※ Some models do not support this function.



● Charging Case

Charging

Connect the case with power supply via the charging cable.

※ When two transmitters are put in the charging case again, the green lights are ON, displaying the remaining battery.

Specifications

TX

Transmission Frequency	2.4GHz
Transmission Distance	≥ 10m
Latency	≤ 20ms
Sensitivity	-38dB±3dB
Frequency Response	20Hz-20KHz
Sampling Rate	48KHz
SNR	≥ 75dB
Battery	200mA
Working Time	15H
Charging Time	1.5H
Working Current	≤ 12mA
Dimensions	42.3x32.5mm

RX

Transmission Frequency	2.4GHz
Frequency Response	20Hz-20KHz
Dimensions	36x13mm

Charging Case

Charging Time	3H
Battery	1000mA
Battery Life	Provide 2 full charges
Adapter	5V/1A

Input Voltage	4.8-5.5V
Max. Current	500mA
Charging Port	Type-C
Dimensions	106x65x33.5mm

Moman (UK) Limited

Unit 25 Basepoint Business Centre, Aviation Park, West Christchurch, United Kingdom
BH23 6NX

www.momanx.com

@MomanGlobal

https://moman.co/youtube