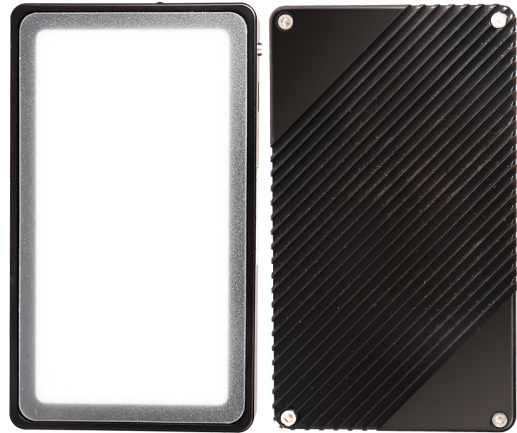




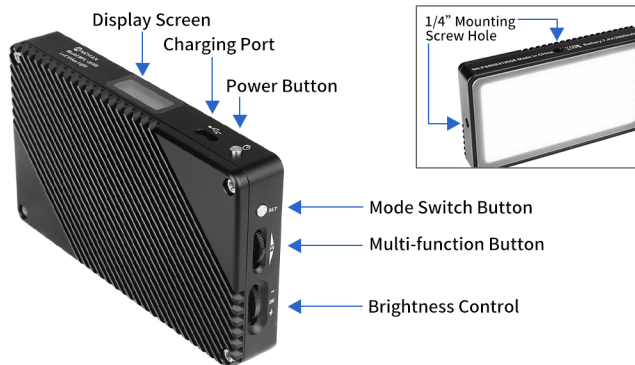
# Fill Light MFL-09XR User Manual



## Specification

Body Material	Aluminum Alloy	Dimensions	128mm*74mm*20mm
Display Screen	OLED screen	Color Temperature Range	2500k-8500k(±200k)
Weight	300g	Input Voltage	Suitable for 5-12V Full Voltage Input.Supporting Charger for QC3.0 Protocol.
Charging Port	Type-C		
Max Output Power	12W	Runtime	100% brightness power for about 150mins,5% brightness power for about 24 hours.
Emitting Angle	>120°		
Number of LEDs	150pcs	Charging Time	Quick Charge for about 2 hours,about 4 hours for normal.
Color Rendering Index	Ra≥96		
Built-in Li-ion Battery Capacity	3200mAh		

## Components



## Operation

### 1. Power Button

Press and hold the button to turn on or turn off the power.

### 2. Charging Port

Charging input voltage DC5V, Quick Charge for about 2 hours, about 4 hours for normal.



### 3. Mode Switch Button (3 light modes )

Press the Mode Switch Button to switch 3 light modes (CCT; HSI; SCENE)

### 4. Multi-function Button (CCT Mode)

When the light is in CCT mode, the multi-function key can adjust the color temperature (2500K-8500K). Press up to increase the color temperature and down to reduce the color temperature.

### 5. Multi-function Button (HSI Mode)

When the light is in HSI mode, the multi-function key can adjust the color and color temperature. When pointing to H, adjust the light-emitting color value (0-360°), Press up to increase the color value and down to reduce the color value. Press the multi-function key in the middle, point to S, represents adjusting color temperature (0-100). Press up to increase the color temperature and down to reduce the color temperature.

### 6. SCENE Mode

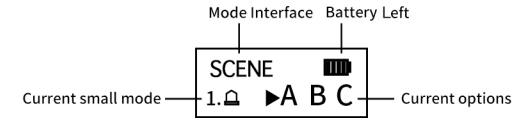
There are three modes in SCENE mode: 1.Warning Lamp mode, 2. Gradient mode, 3. Lightning mode. There are three ABC options in small mode which can be switched freely. When the light is in SCENE mode, press the multi-function key in the middle to switch the light-emitting mode: 1.Warning Lamp mode, 2. Gradient mode, 3. Lightning mode. Look at the instructions to adjust the ABC options, Press up to move forward and down to backward.

### 7. Brightness Control (0%-100%)

Twist the button upwards to increase brightness and downwards to decrease it.

## Iconic Interface

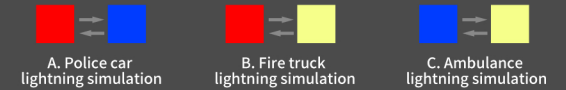
### SCENE Mode Interface



Current brightness: Under discharge condition, the intensity of light is 100% maximum and 0% minimum. Current options: Light emitting color in small mode in discharge state. Current small mode: SCENE mode light-emitting mode under state: 1. Warning lamp mode 2. Gradient mode 3. Lightning mode

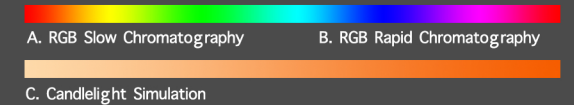
### 1. Warning lamp mode

The warning lamp mode is to simulate the lightning of special vehicles. This product has three kinds of collocation choices.



### 2. Gradient mode

Gradient mode refers to the process of luminous color gradient. This product has three kinds of collocation choices.

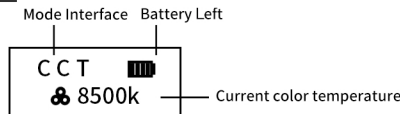


### 3. Lightning mode

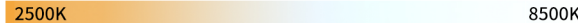
A. Lightning 1 B. Lightning 2 C. Screen simulation

## Iconic Interface

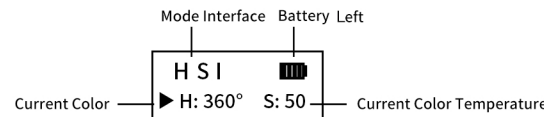
### CCT Mode Interface



Current brightness: Output under discharge condition. 100% is the max output and 0% is the lowest output. Current Color Temperature: Color temperature under discharge condition. 8500K stands for cool white, and 2500K is neutral white.



### HSI Mode Interface



Current brightness: Discharge state, the intensity of light. 100% is the largest and 0% is the lowest. Current color temperature: the saturation of the luminous color in the discharge state. 0 is the smallest, 100 is the largest. Current color: The color of light in the discharge state. 0° minimum and 360° degree maximum.



## Maintenance

1. Please plug out the USB charging cable when charging finishes.
2. If you do not use this product for a long time, it might not be able to turn on instantly, which is due to dead battery. Please charge the product and it can resume to work. Please charge the product every 3 months regularly.
3. This product has built-in rechargeable li-ion battery which has limited longevity, and when the performance degrades in years use, please contact us to get the battery replaced.
4. Please do not drop or impact the product to avoid scratches on the surface.
5. This Product is not water-proof.

## Notes

1. Please do not disassemble or modify the product.
2. Please do not submerge the product or put it in fire.
3. Please avoid impact on the product.
4. This product might become hot during usage which is normal, please allow certain space for heat-sink when using it.
5. Please do not put the product under high temperature or high humidity.

## Warranty

All products are guaranteed with a limited 1-year free warranty service. Please see our homepage for term in details.

## Packing

Photography Fill Light MFL-09XR\*1, Type-C Charging Cable\*1, Mini Cold Shoe\*1, Packing Bag\*1, User Manual\*1