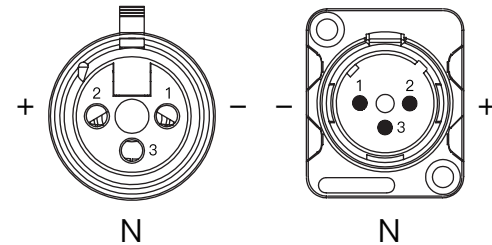


Caring For Your COLBOR Product

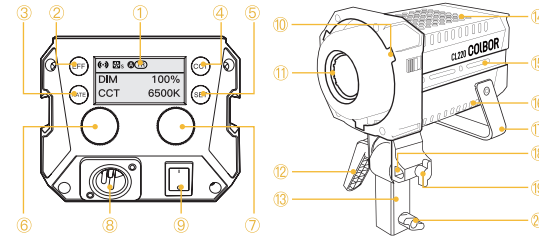
- Keep corrosive chemicals, liquids and heat source away from the product to prevent mechanics damage.
- The product is not waterproof.
- Do not leave the product unattended while in use. Keep out of reach of children.
- Do not handle with wet hands. Do not touch the hot COB surface.
- Please do not block the ventilation and do not look at the light directly when it is on.
- Do not attempt to disassemble or modify the product. Doing so voids warranty.
- Please have the product checked or repaired by authorized technicians if any malfunctions happened.
- Disconnect from the power supply when it is not in use.
- Do not cover, inverted COB and radiator for high temperature, do not cover, inverted, do not touch the lamp holder and radiator vent with your hands when the product in use.
- Do not use any power adapter of other products to avoid the lamp malfunction.
- Malfunction may be caused by dropping, impact of external force.
- Failure to follow all the instructions may result in mechanics damage.
- Our company reserves the right of final interpretation of the product.
- Product design and specifications are subject to change without prior notice.

Power Connection

- You must use the power adapter that comes with the product rather than other adapters to avoid damaging the lamp. The positive and negative connections of the power adapter interface (DC OUT) and the lamp power interface (DCIN) are shown below:



Product Instructions



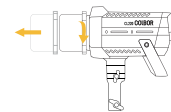
- | | |
|-----------------------------------|--------------------------------------|
| ① LED Display Screen | ⑪ COB Lamp Beads |
| ② EFF Mode Button | ⑫ Lamp Angle Adjustment Locking Grip |
| ③ EFF Rate Option Button | ⑬ Bracket |
| ④ Color Temperature Option Button | ⑭ Air Outlet |
| ⑤ Settings Button | ⑮ NATO Slideway |
| ⑥ Color Temperature Control Wheel | ⑯ Air Inlet |
| ⑦ Brightness Control Wheel | ⑰ Lamp Grip |
| ⑧ DC 48V Power Port | ⑱ Soft Light Cover Hole |
| ⑨ Power Button | ⑲ Soft Light Cover Hole Screws |
| ⑩ BOWENS Mount | ⑳ Bracket Screw |

Light Installation

1. Removal of lamp cap protection cover

Hold the COB cover with the BOWENS Mount tenon and rotate it as the direction of the arrow.

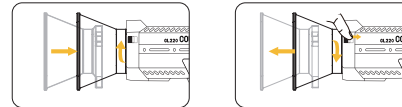
★ Note: Be sure to remove cob protective cover and cob protective film before use.



2. Installation and removal of reflector

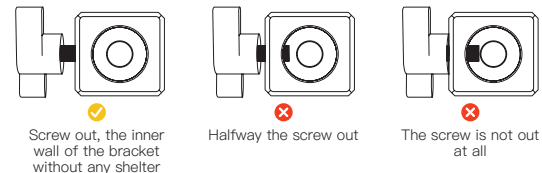
Installation of reflector: align the reflector with the groove around the lamp head and clip it in, turn the reflector as the direction of the arrow, and the reflector installation will be completed after the top rod rebounds.

Removal of reflector: Under the instructions of "Lamp Cap Protection Cover Removal".



3. Installation and fixation of light

Rotate the lamp holder screw until the inner wall not shielded and put the product on the top of the lamp holder to tighten the bracket screw for fixation. Adjust the lamp body irradiation Angle and tighten the lamp holder Angle grip fixed.



4. Install the soft light cover

Insert the handle of the soft light umbrella into the umbrella hole. After adjustment, lock the cover hole screw.



5. Power connection

(1) Mount the power adapter
Do not suspend the power adapter in the air. Use wire rings to hang it on the lamp stand.

(2) Power with power adapter

Connect the power adapter, align the pin with the DC power interface of the lamp body, and then power through the cable after stable.

(3) Power cord storage

Please turn off the lamp before unplugging the power cord. When unplug the power cable, hold down the safety lock on the connector before removing it. If unlocked, do not forcibly remove the power supply.

(4) Power with V-port battery

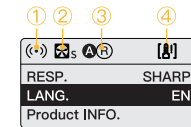
Mount the V-port battery to the lamp by complimentary the NATO expansion bar with VM3 (optional), and then connect the D-tap to XLR power cable to start the lamp.

*Note: Under the condition of one 14.8V battery power supply, the maximum brightness of the product is 50% of the full power.

Operation Instructions

- Please be sure to remove the COB protective cover before use the light.
- Turn on the lamp: After confirming that the power connection is normal, press the switch to "-", and the screen will display the brand and product module, and then enter the operation interface. (Default mode: CCT)
- Turn off the lamp: press the switch to "o" to turn off the power switch.

Status Icon Description

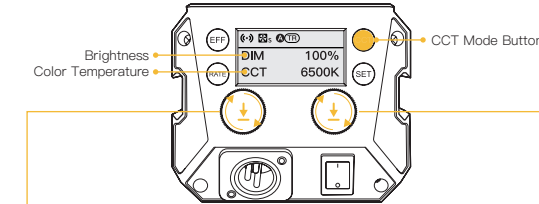


① APP Connection Status Icon

- (••) (••) After selecting wireless connection in Settings menu, the icon will be displayed dynamically.

(••)	The icon is always on to indicate successful pairing with mobile APP. The icon disappears to indicate mobile APP pairing failure, or the product is unpaired.
② Fan Status Icon	
⊞s	Smart Mode. The product will adjust the fan speed according to the internal detected temperature to ensure that it is in optimal working condition.
⊞o	Quiet Mode. The fan keeps running at low speed for minimum noise, and overheating protection will be activated if the product temperature is higher than the alarm value.
⊞P	Performance Mode. Fan runs at the highest speed to ensure heat dissipation.
③ Group Status Icon	
NULL	None grouping status. The product defaults to the factory status, and will not be affected by other groups.
A T	A stands for Group A. There are fifteen groups (A-o). T stands for Tx.
A R	A stands for Group A. There are fifteen groups (A-o). R stands for Rx.
A TR	A stands for Group A. There are fifteen groups (A-o). TR stands for TxRx.
④ Product Overheated Alarm Icon	
[A]	If the icon flashes, it means that the internal temperature of the product is too high, and cooling measures need to be taken. If the icon disappears, it means that the operation is normal.

CCT Mode (Short press CCT Mode Button to enter)



Color Temperature Control Wheel

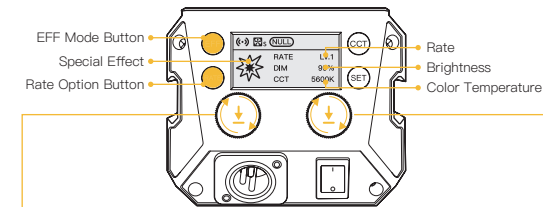
- Roll the wheel upwards or downwards to adjust color temperature (CCT) within 2700K-6500K
- Press down the wheel to quickly switch the preset color temperature, 2700K, 3200K, 4000K, 5600K, and 6500K

Brightness Control Wheel

- Roll the wheel upwards or downwards to adjust brightness (DIM) within 0%-100%
- Press down the wheel to quickly switch the preset brightness, 0%, 25%, 50%, 75%, and 100%

★ Rolling the wheel will enlarge the current setting parameter value, and it will automatically return to the main screen after 1.5 seconds of no operation

EFF Mode (Short press EFF Mode Button to enter)



Color Temperature Control Wheel
 Roll the wheel upwards or downwards to adjust color temperature (CCT) within 2700K-6500K
 Press down the wheel to quickly switch the preset color temperature, 2700K, 3200K, 4000K, 5600K, and 6500K

Brightness Control Wheel
 Roll the wheel upwards or downwards to adjust brightness (DIM) within 0%-100%
 Press down the wheel to quickly switch the preset brightness, 0%, 25%, 50%, 75%, and 100%

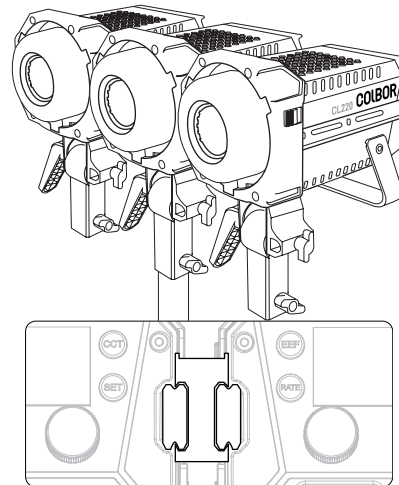
Light Effect Mode (EFF) Button
 Press to switch light effect: Fire → CCT Chase → Pulsing → TV → Explosion → Faulty Bulb → Welding → Strobe → Lightning → S.O.S

EFF		RATE: Lv.1 - Lv.5 DIM: 0%-100% CCT: 2700K-6500K		RATE: Lv.1 - Lv.5 DIM: 0%-100% CCT: 2700K-6500K
		RATE: Lv.1 - Lv.5 DIM: 0%-100% CCT: LOCK		RATE: Lv.1 - Lv.5 DIM: 0%-100% CCT: 2700K-6500K
		RATE: Lv.1 - Lv.5 DIM: 0%-100% CCT: 2700K-6500K		RATE: Lv.1 - Lv.5 DIM: 0%-100% CCT: 2700K-6500K
		RATE: Lv.1 - Lv.5 DIM: 0%-100% CCT: LOCK		RATE: Lv.1 - Lv.5 DIM: 0%-100% CCT: 2700K-6500K
		RATE: Lv.1 - Lv.5 DIM: 0%-100% CCT: 2700K-6500K		RATE: LOCK DIM: 0%-100% CCT: 2700K-6500K

Settings

- Short press Settings Button to enter settings menu.
- Roll the Brightness Control Wheel to choose setting.
- Roll the Color Temperature Control Wheel to adjust corresponding setting.

Settings	Options
Wireless Connection	APP/Remote Contro Long press the setting button for pairing (One for each time)
Fan Mode	SMART/ QUIET/ PERFORMANEC SMART: The product will detect the current internal temperature to adjust the fan speed by itself. QUIET: The fan will run at low speed. If the product temperature reaches the alarm value, it will start the power-off protection mechanism. PERFORMANEC: Fan runs at the highest speed to ensure heat dissipation.
Group	NULL/ A-O (NULL by default)
Communication	TX/ RX/ TXRX (TX by default)
Curve	LINEAR, L.CURVE, E.CURVE, S.CURVE.
Response	SHARP/ SMOOTH (SMOOTH by default)
Initial brightness setting	Default, 0%、25%、75%、100%
Language	EN/ CN (EN by default)
Product INFO.	Short press the Color Temperature Control Wheel to enter the production information interface. Long press the Color Temperature Control Wheel to settings menu. ① Hardware Version ② Firmware Version ③ Protocol Version ④ MAC Address

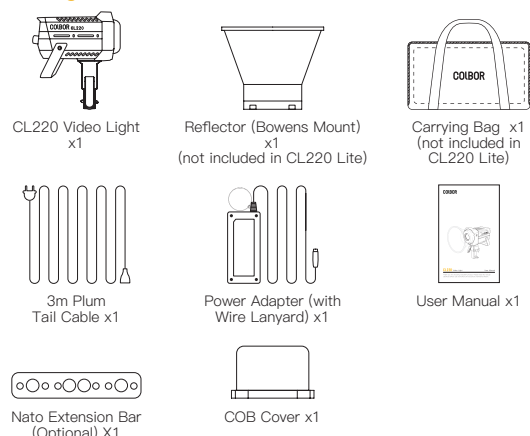


* Equipped with a NATO extension bar and an NQD quick-release device, the lights can be spliced together, up to three lights can be spliced.

Specifications

Color Rendering Index	97+
Color Temperature Range	2700K-6500K (±200K)
Beam Angle	≈∠ 120° Reflector ≈∠ 15°
Illumination	See the Form Below
COB Output Power	220W
Power	250W (Max Power)
Light Working Voltage	DC 48V 5.2A
Cooling Mode	SMART/ QUIET/PERFORMANEC
Connector	Three core cannon head (2 for active, and 1 for negative)
Body Material	Aluminum Alloy+ABS
Light Dimension (mm)	212*128*219mm (Light Base Included)
Light Weight	1570g (Light Base Included)
Operating Temperature	-10-40°C

Package List



* Power adapters may vary according to sales region.

Form 1

CCT		Illumination			
			1m	3m	5m
2700K	Light Base	LUX	8,020	1,250	569
	Reflector	FC	745	116	53
3200K	Light Base	LUX	8,130	1,330	594
	Reflector	FC	772	123	55
4300K	Light Base	LUX	8,840	1,420	636
	Reflector	FC	822	132	59
5600K	Light Base	LUX	9,430	1,480	666
	Reflector	FC	876	138	62
6500K	Light Base	LUX	105,000	9,820	3,710
	Reflector	FC	9,750	912	345
6500K	Light Base	LUX	9,340	1,510	686
	Reflector	FC	877	140	64
6500K	Light Base	LUX	108,000	10,200	3,880
	Reflector	FC	10,100	949	360

* The data is given from testing in a laboratory.

More functions of COLBOR



<https://www.colborlight.com/pages/colbor-apps-download>

Scan the above QR code to the webpage and download the relevant apps, so that you can be benefit with more functions such as remote light control and firmware upgrade.

WARRANTY

Warranty Period

Thank you for purchasing COLBOR products.
 1. Customers are entitled to free replacement or repair service in case of quality defect(s) found in the product under normal use within 30 days upon receipt of the product.
 2. Original COLBOR products are entitled to 12-month limited warranty service. The warranty period begins on the date of purchase of brand new, unused products by the first end-user.
 Within the warranty period, if product defect or failure is attributable to material defect or technological problem, the defective product or defective part will be repaired or replaced without charge (service and materials fee).

Warranty Exclusions and Limitations

- Faults resulted from inappropriate use of a product without following its operation specification
- Artificial damage, e.g. crash, squeeze, scratch, soaking, exposing to rain or damp
- Modifications to a product by its user or a third party without prior written consent of COLBOR, e.g. replacement of element or circuit, label alteration
- The code on product is inconsistent with that of warranty certificate, or the code on the product or warranty certificate is altered or torn off
- All consumable accessory attached to a product, like cable, cover
- Faults as a result of force majeure, such as fire, flood, lightning, etc.

Warranty Claim Procedure

- If failure or any problem occurs to your product after purchase, please contact a local agent for assistance, or you can always contact COLBOR's customer service through email.
- Please retain your sales receipt and warranty certificate as proof of purchase. If any of these documents is missing, only sales return or chargeable service will be provided.
- If the COLBOR product is out of the warranty coverage, the service and the parts cost will be charged.

WARRANTY CERTIFICATE	
Please register your warranty. Meanwhile, you are welcomed to contact us via Email.	
USER INFORMATION	Customer Name:
	Phone Number:
	Email:
SALES INFORMATION	Address:
	Sales Date:
	Model:
	Product Code:
REPAIR RECORD	Dealer:
	Service Date:
	Technician:
	Issue:

RESULT Solved Unsolved Returned(Replaced)