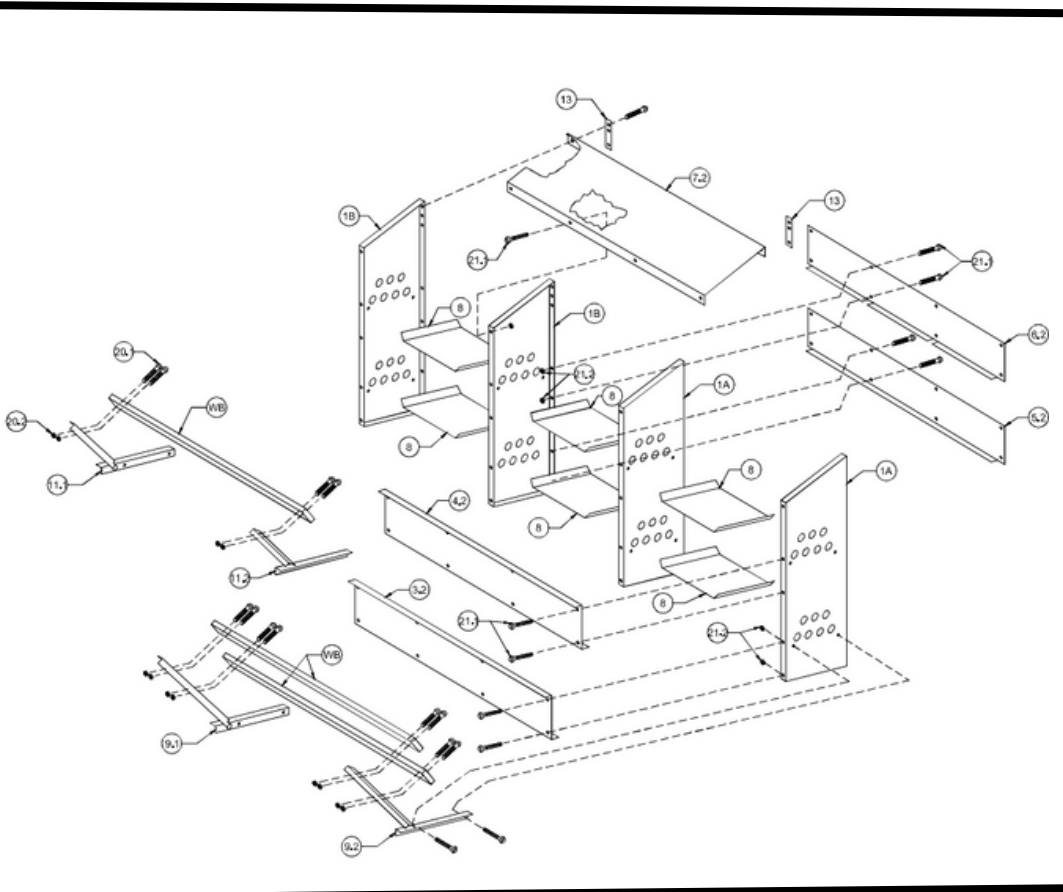




ASSEMBLY INSTRUCTIONS FOR 0300113

Step 1: Lay roof panel (PT # 7.3) upside down. Attach the 5 side panels (Labeled 1B & 1A) with small screws and nuts (PT # 21.1 and 21.2) Tighten fasteners and flip nesting house over. Note: There are 3 left panels, and 2 right panels.



Step 2: Attach the Front and Back Panels using the smaller screws and nuts. (PT # 21.1 and 21.2).

Panels are as follows:

**Front bottom panel (PT # 3.3)
Note: This panel has one lip, no notch.**

**Back Bottom panel (PT # 5.3)
Note: This panel has one lip, no notch.**

**Front Top panel (PT # 4.3)
Note: This panel has two lips and three notches.**

**Back Top panel (PT # 6.3)
Note: This panel has one lip and three notches.**

Hand tighten.

Step 3: Attach perch arms (PT # 11.2 Right and 11.1 Left) (PT # 9.2 Right and 9.1 Left) to the side panels using the smaller screws and nuts (PT # 21.1 and 21.2).

**Note: Perch arms lift toward the sky and are set on the outside of the nesting house.
Hand tighten.**

Step 4: Attach the wooden boards (PT # 1 WB) using the large screws and nuts (PT # 20.1 and 20.2)

For wall mounting there are TWO hangers (PT # 13) provided.

Attaching the hangers for wall mounting: Attach hanger brackets (PT # 13) to the back of BOTH upper CORNERS using small screws and nuts (PT # 21.1 and 21.2) that were provided.

Step 5: Tighten all Fasteners! Insert nest bottom (PT # 8) in each opening.

Note: These are removable for easy cleaning.

Congratulations! You have completed the nesting house!

For any questions or concerns please contact us via phone (870)-869-9922 or email us at sales@best-metal-products.com

