



Blake & Taylor
— Chalk —
FURNITURE PAINT

PAINTING FABRIC

PAINTING FABRIC WITH BLAKE & TAYLOR CHALK FURNITURE PAINT

Blake & Taylor Chalk Furniture Paint is so versatile it can be used on many different surfaces, including fabric. Painting upholstery using Blake & Taylor Paint is a fantastic way to revitalise worn-out furniture and inject your personal style into your living space. This step-by-step guide will walk you through the process, from preparation to finishing touches, ensuring that even if you're a beginner, you can achieve stunning results. You can try experimenting with printing and stencilling to introduce pattern and design.

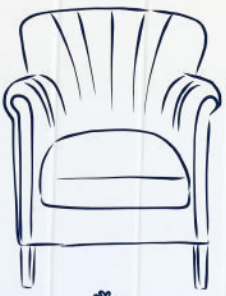
We'll show you how with this step by step guide to using Blake & Taylor Paint on your fabrics.



AUSTRALIAN
MADE



BEFORE



AFTER



- Painting upholstery is a cost effective way to update rather than re-covering
- Works best on natural fabrics such as cotton and linen. Great on leather.
- Easy application with a brush
- Perfect for a quick change for outdated fabric prints
- Versatile and easy to apply
- Colourfast



MINIMAL
PREP



NON TOXIC
VOC FREE



WATER
BASED



PREMIUM
QUALITY



QUICK
DRY

WHY SHOULD YOU UPCYCLE RATHER THAN BUY NEW?

♻️ You'll be helping the environment and preventing old pieces ending up in landfill

💰 Save your money and don't buy new. You might even make extra money restoring furniture and selling it on to others

👤🎨 Be your own artist. Create your own style which reflects your personality, choosing your own colour palette

♥️ Enjoy the satisfaction of creating something you love



WHERE TO START

Before you begin you'll need to assess the condition of your furniture making sure there are no holes or tears in the fabric. Do any necessary repairs first.

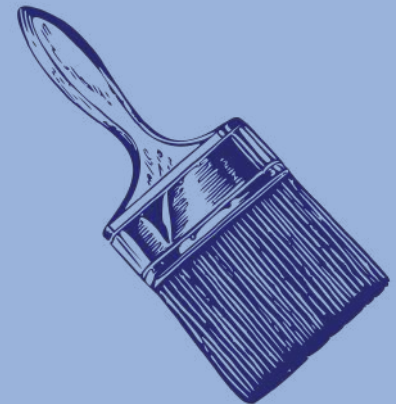
Choosing your fabric

- Natural fabrics such as cotton, linen and leather work best
- You'll need fewer layers of paint if you work with light coloured fabrics without lots of bold pattern.
- Choose smooth weave fabrics without heavy texture or nap. Velvets and heavily textured fabrics can be painted but the final feel and overall texture will be changed by painting.



Basic Tools

- Spray bottle
- Paintbrushes
- Container to mix paint
- Masking Tape
- Fine grade sandpaper
- Wax



BLAKE & TAYLOR PAINT EASY AS 1, 2, 3

1



Prep

2



Paint

3



Protect

Make sure your piece is clean. Use masking tape to tape off any areas you are not painting, like chair legs or frame. Dampen your fabric with a spray bottle and thin out your paint.

Generally 2-3 coats will be needed depending on the colour, pattern and texture of your fabric.

Once the paint has dried it can be lightly sanded and wax applied for a softer finish

PREPARING YOUR FABRIC FOR PAINTING

Your upholstered fabric must be clean and free from any debris. Give the fabric a good vacuum making sure to remove any pet hair. Spot clean any stains or marks and let it dry.



DAMPEN THE FABRIC AND THIN OUT YOUR PAINT

The most important steps to painting fabric with Blake & Taylor Paint is to work with a damp surface and thinned paint. Use a fine misting spray to dampen your fabric. This allows the paint to soak into the fabric fibres more easily.

Pour a small amount of your paint into a suitable mixing container. Slowly add small amounts of water a little at a time and mix well. Try a 1:2 water to paint ratio to start with and test an area. If this dries with a hard texture try a 1:1 ratio. The paint should be thin enough so that it is absorbed into the fabric fibres.

PAINTING YOUR FABRIC

1

Your First Coat

Protect any areas you are not painting with masking tape. Once you have the right consistency of paint use a brush to apply paint to your fabric. Apply one coat. You might notice that the paint appears patchy, this is normal with the first application. If you are covering a patterned surface you will probably still see this pattern through the paint. This will be covered with the next coats. Allow to dry thoroughly over night. If possible leave it in the sun.



2

Your Second Coat

Make sure the first coat is thoroughly dry. Lightly sanding with a fine grit sandpaper will smooth out the surface. Clean off any dust. Apply your second coat. If your original fabric had a bold pattern you will now notice it starting to disappear. Two coats may be enough if you are working with a plain fabric. A third coat might be needed if you can still see the original pattern showing through. Allow to dry in the sun or over night.



3

Your Third Coat and Wax

Apply your third coat if needed. Once thoroughly dry, sand with a fine grade sandpaper and remove dust. You can leave your piece as it is, but applying natural wax will give it a softer feel and added protection. Apply a thin coat of wax with either a lint free cloth or clean brush. Wipe away any excess wax and leave for 24hours to fully dry. It will take 7 days for it to fully cure.



AFTER



BEFORE

FAQ WITH PAINTING FABRIC

Will the paint come off when I sit on it?

No staining or colour transfer will happen.

Should you seal the paint?

Sealing the paint will give it added protection. You can seal with heat, either with an iron or drying in the sun, or you can apply our natural wax.

Does the paint make the surface hard and stiff?

No. If you thin out your paint to the right consistency and dampen your fabric before application, this should not happen. Also, paint with thin coats and no more than 3 layers.



HAVE FUN!

Experiment with
stencils or other
printing
techniques to
add some pattern



SHARE YOUR NEWLY PAINTED FURNITURE WITH US

We love seeing what you have created, so share your pictures with us! You might just inspire someone else to pick up a paintbrush when they see how easy it is to transform your first piece of furniture.



Follow and share on
Facebook
Blake & Taylor Paint



Send us your pictures via email
info@blakeandtaylorpaint.com.au



Follow us on Instagram
[@blakeandtaylorpaint](https://www.instagram.com/blakeandtaylorpaint)
and tag your photos

Check out our other painting guides at
www.blakeandtaylorpaint.com.au