



Goblin Retrofit Installation (pre-2023 Reckless 80L, Reckless 40L & Reckless 10L)



Tools Required:

- Light Color Paint Pen
- Hammer
- 9mm Leather Punch (or 23/64 drill bit)
- 7mm Leather Punch (or 9/32 drill bit)
- 4mm Hex Key
- MSR Fuel Bottle or similar size water bottle (~8cm, 3.15in diameter)
- Dark Color Marker
- Scissors

1. Remove the foam padding from the bottom of the harness





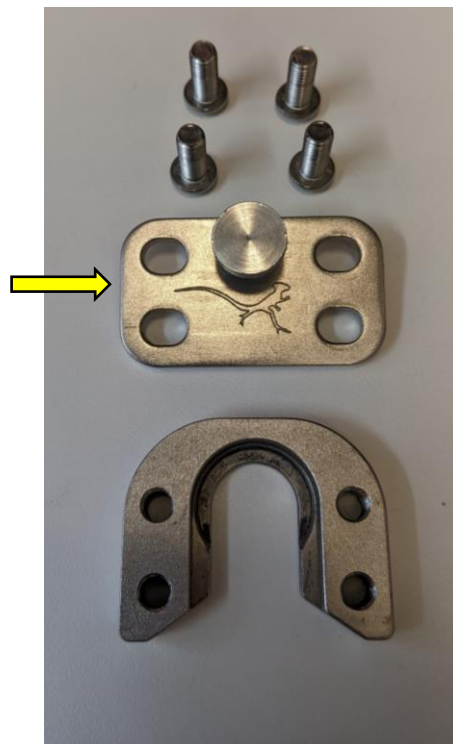
2. Remove the aluminum bar & three cam straps from the top of the harness. These parts are not needed with the Goblin mounting setup



For more information contact us at moskomoto@moskomoto.com or 1-509-281-3211 for our USA team and moskoeu@moskomoto.com or +49 151 74212658 for our EU team



3. From the Goblin hardware kit, take the cap plate and place it on the desired mounting location on the harness



For more information contact us at moskomoto@moskomoto.com or 1-509-281-3211 for our USA team and moskoeu@moskomoto.com or +49 151 74212658 for our EU team



4. Using a paint pen, mark the location of the four holes in the cap plate onto the harness



For more information contact us at moskomoto@moskomoto.com or 1-509-281-3211 for our USA team and moskoeu@moskomoto.com or +49 151 74212658 for our EU team



5. Mark the bottom of the locking screw with the paint pen and place the cap plate back onto the same spot on the harness. The paint should transfer to the harness marking the locking screw hole location

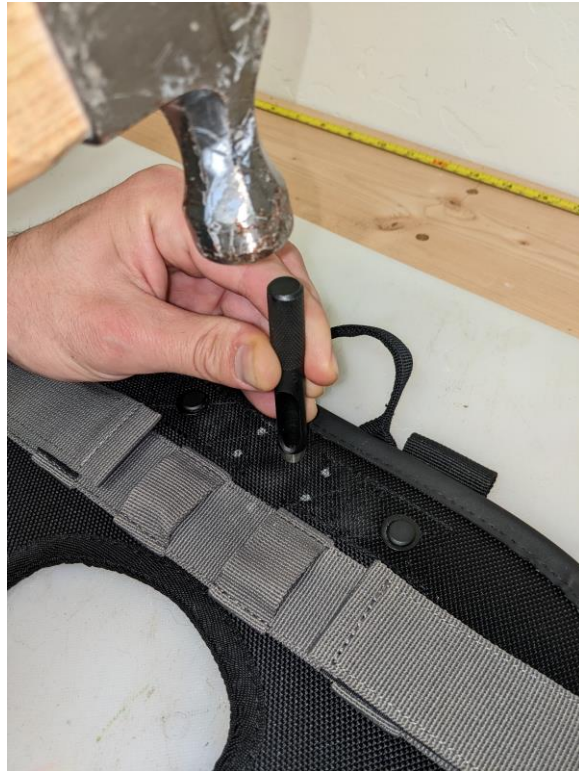


For more information contact us at moskomoto@moskomoto.com or 1-509-281-3211 for our USA team and moskoeu@moskomoto.com or +49 151 74212658 for our EU team



6. Use the 9mm leather punch or a 23/64 drill bit to make the center locking screw hole. Alternatively, a 23/64 drill bit can be used to make the hole – be sure to run the drill through a few times to clear any excess material





For more information contact us at moskomoto@moskomoto.com or 1-509-281-3211 for our USA team and moskoeu@moskomoto.com or +49 151 74212658 for our EU team



7. Next use the 7mm leather punch to make the four mounting screw holes in the harness. Alternatively, a 9/32 drill bit can be used to make the hole – be sure to run the drill through a few times to clear any excess material



For more information contact us at moskomoto@moskomoto.com or 1-509-281-3211 for our USA team and moskoeu@moskomoto.com or +49 151 74212658 for our EU team



8. Mount the Goblin onto the harness using the 4mm hex key. See below images for location and orientation of the Goblin parts



For more information contact us at moskomoto@moskomoto.com or 1-509-281-3211 for our USA team and moskoeu@moskomoto.com or +49 151 74212658 for our EU team



9. Reinstall the foam on the underside of the harness. Using an MSR fuel bottle or similar size water bottle, trace the base of the bottle onto the foam with the dark color marker



For more information contact us at moskomoto@moskomoto.com or 1-509-281-3211 for our USA team and moskoeu@moskomoto.com or +49 151 74212658 for our EU team



For more information contact us at moskomoto@moskomoto.com or 1-509-281-3211 for our USA team and moskoeu@moskomoto.com or +49 151 74212658 for our EU team



10. Remove the foam from the harness and cut out the circle that was traced



For more information contact us at moskomoto@moskomoto.com or 1-509-281-3211 for our USA team and moskoeu@moskomoto.com or +49 151 74212658 for our EU team



11. Reinstall the foam onto the bottom of the harness. The Gnoblin is now installed on the harness and ready to be mounted onto a bike equipped with the Gnoblin button



Please note that the Gnoblin button (the bike mounted attachment piece) can be mounted to a tail rack or directly through fender plastics (thicker fender plastics with multiple layers recommended)



For more information contact us at moskomoto@moskomoto.com or 1-509-281-3211 for our USA team and moskoeu@moskomoto.com or +49 151 74212658 for our EU team