



Backcountry 35L Pannier Kit Installation



Tools Required:

- 4mm Hex Key (included)

1. Remove the wedge from the frame as shown in image below (bag not pictured for clarity).





2. Mount the wedge to the pannier rack on the motorcycle as shown below using the provided blue pucks (Qty 8), 40mm screws (Qty 16) and double hole washers (Qty 8) pictured below.





3. Make sure the brackets are parallel to the wedge, uneven pressure may cause damage.

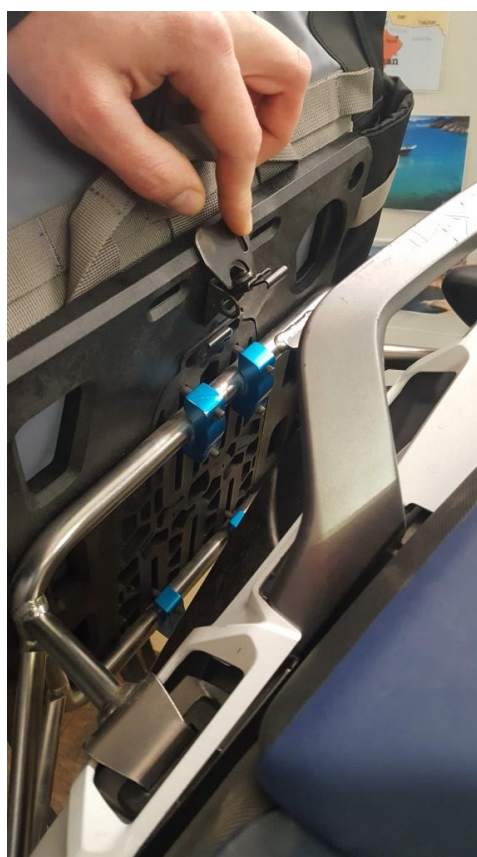


4. Caution! Do not over tighten the mounting screws. Using a power drill may cause damage, hand tighten only. Using the provided 4mm hex key, tighten the screws until they are snug, then turn them another $\frac{1}{2}$ turn. Check periodically for tightness.



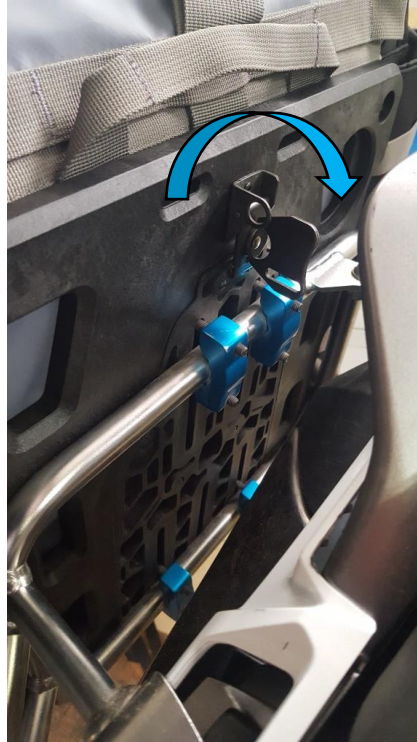
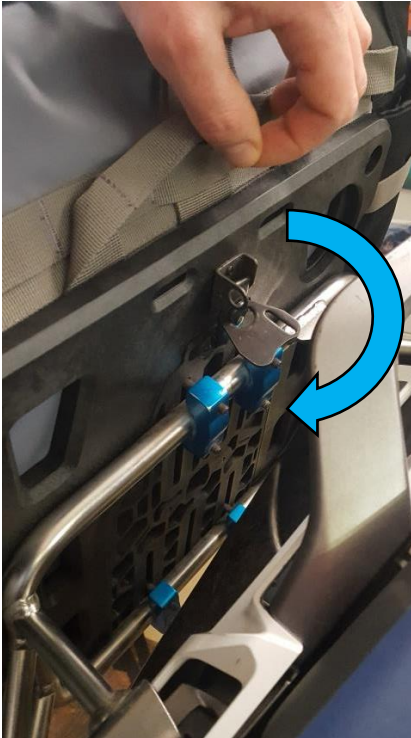


5. Install the bag onto the wedge by sliding it on from above as shown. Note: if the locking loop on the latch interferes with the grab handles or frame of the motorcycle the loop can be removed with metal snips, angle grinder or a hacksaw.





6. Fasten the latch by rotating as shown. Be sure the latch engages with the keeper on the wedge. Always check latches are secure before each ride.



Note: All fasteners on panniers are 2mm or 4mm hex head. These size hex keys are provided for in the field re-torquing or repair.