



2013-2018 BMW F800GS Adventure Adaptor Kit Installation Instructions

Included Parts:

Adaptor, right side (quantity 1)



Large puck (quantity 1)



Large elongated washers (quantity 1)



Adaptor, left side (quantity 1)



M6x25mm wedge fasteners (quantity 4)



Wedge fastener nuts (quantity 4)





M6x30mm right side adaptor lower puck fasteners (quantity 4)



Padded tape, 24" (quantity 1)



Additional Parts Used (included with Pannier Kit):

Standard pucks (quantity 8)



M6x40mm puck fasteners (quantity 16)



Standard elongated washers (quantity 8)



Torx Key (quantity 1)



Hex Key, 4mm (quantity 1)





Adaptor Installation - Left Side

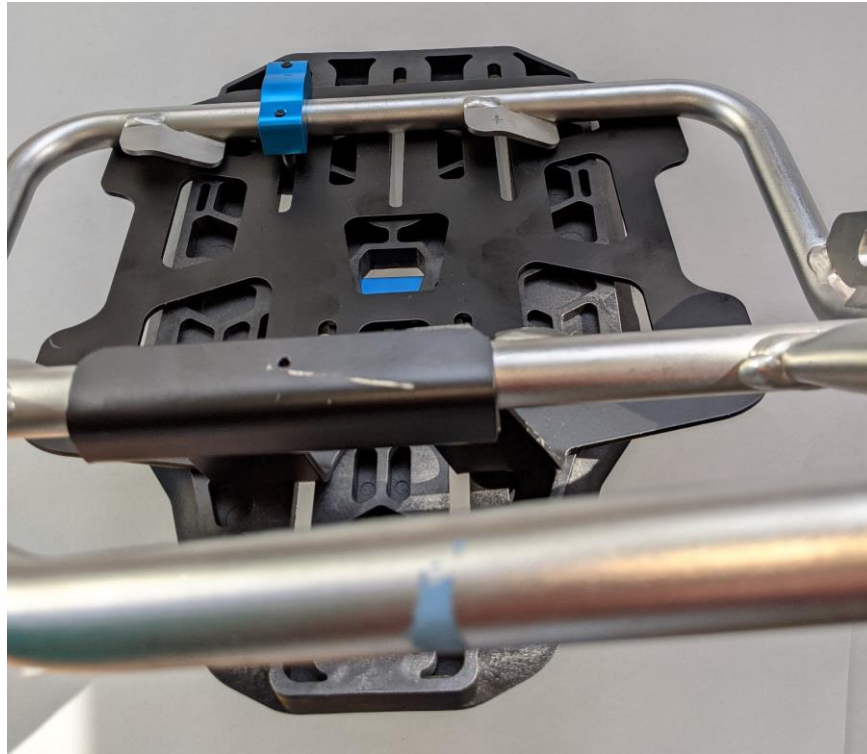
1. Cut padded tape to width of the three adaptor top hook surfaces. Place tape on the underside of the top of the hook first then both sides. Trim as desired.





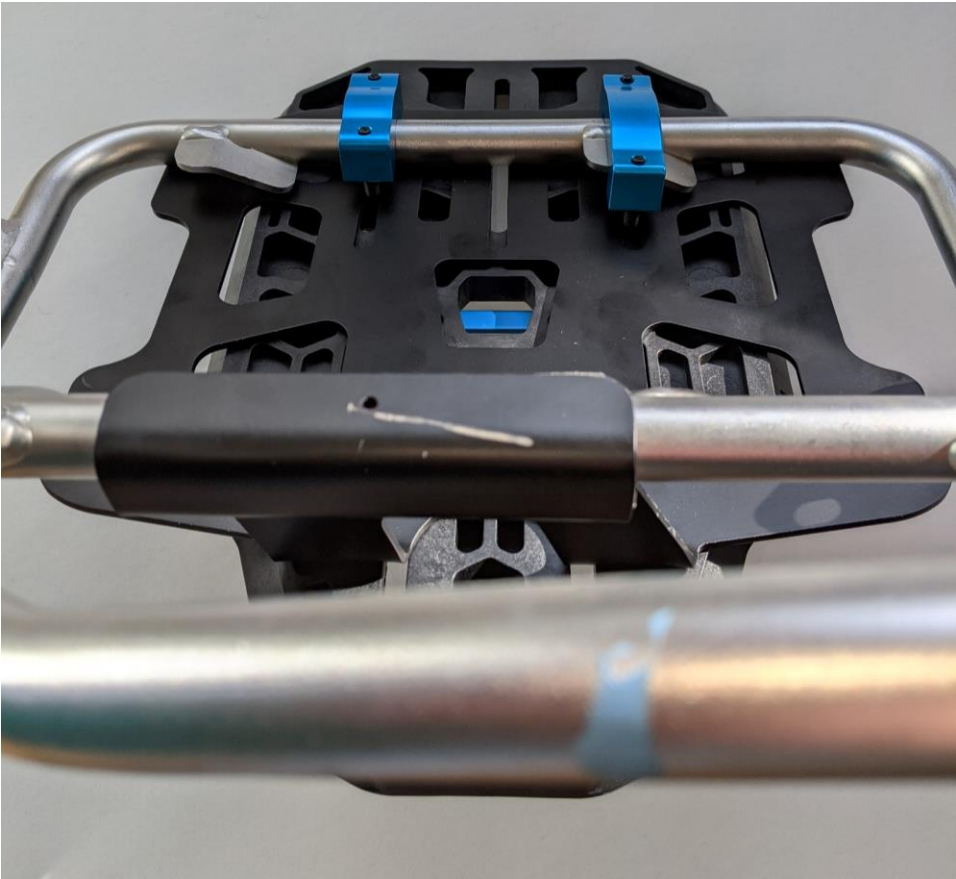
- Center the adaptor aft top hook between the two mount bars on the top of the rack. Using one standard elongated washer, two M6x40mm puck fasteners and one standard puck attach the wedge to the adaptor and rack through the lower forward slot. Tighten the fasteners down evenly, alternating between the two to maintain uniform clamping. Snug but do not tighten fully.





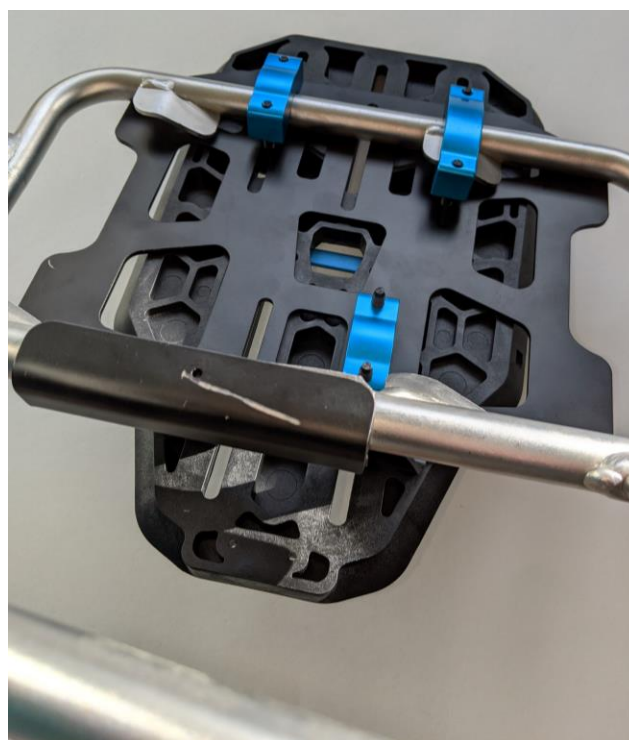
3. Repeat step 2 on the lower aft slot using one large elongated washer, two M6x40mm puck fasteners and one large puck. Position the puck on the inside of the rack over the tab on the lower bar of the rack. Tighten the fasteners down evenly, snug but do not tighten fully.

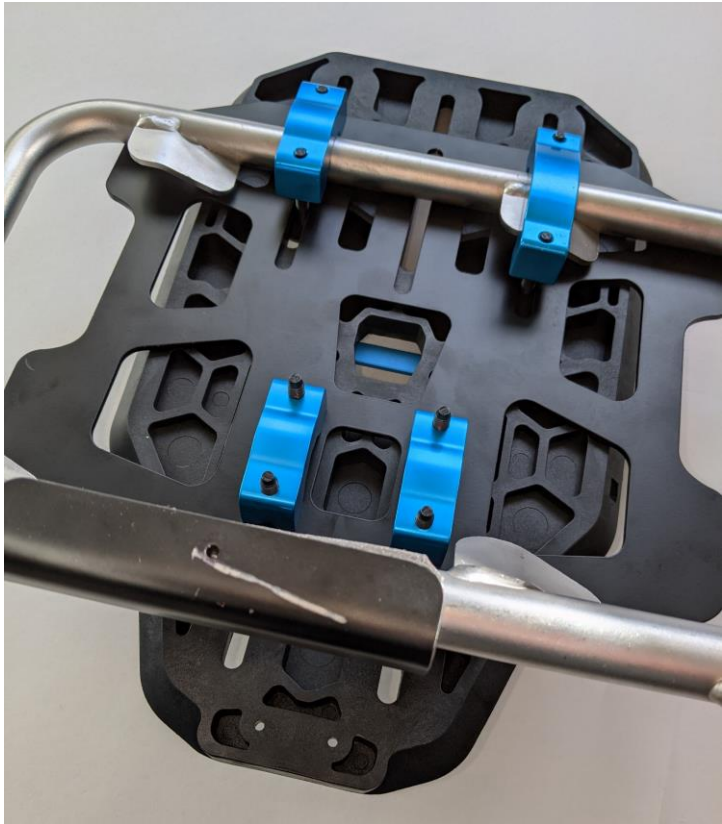






4. Use one standard elongated washer, two M6x40mm puck fasteners and one standard puck to attach through one of the upper slots of the wedge to the adaptor. Repeat for the second upper slot. Note that these pucks do not go around the rack but do secure the wedge to the adaptor. Snug but do not tighten fully.







5. Before tightening the hardware down, adjust the vertical placement of the wedge to the desired height. Typical installation places the bag as low on the motorcycle as possible for a lower center of gravity, however bike height and riding conditions may dictate placing the bags higher on the rack. Bag height is set by the wedge height. Once the desired wedge / bag height is achieved fully tighten the fasteners down, alternating between the two on each puck to maintain uniform clamping. Tighten the fasteners to a final torque of 8 N*m (5.9 ft-lbs).

Adaptor Installation - Right Side

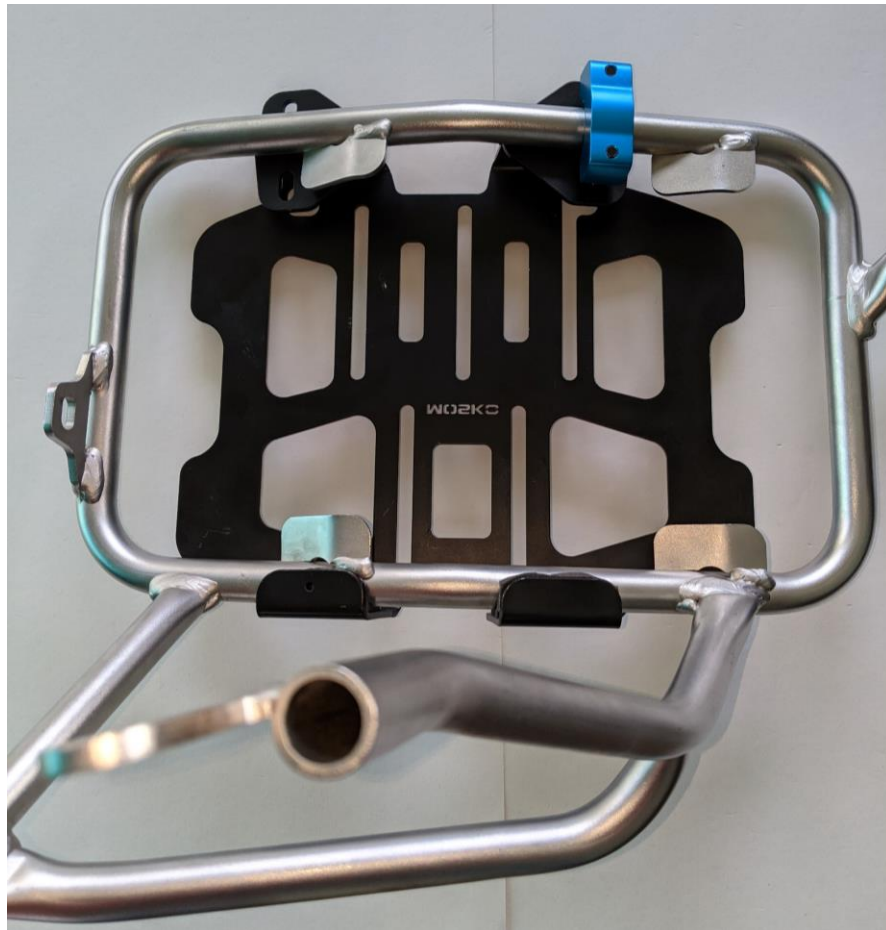
1. Cut padded tape to width of the six adaptor top hook surfaces. Place tape on the underside of the top of the hook first then both sides. Trim as desired.

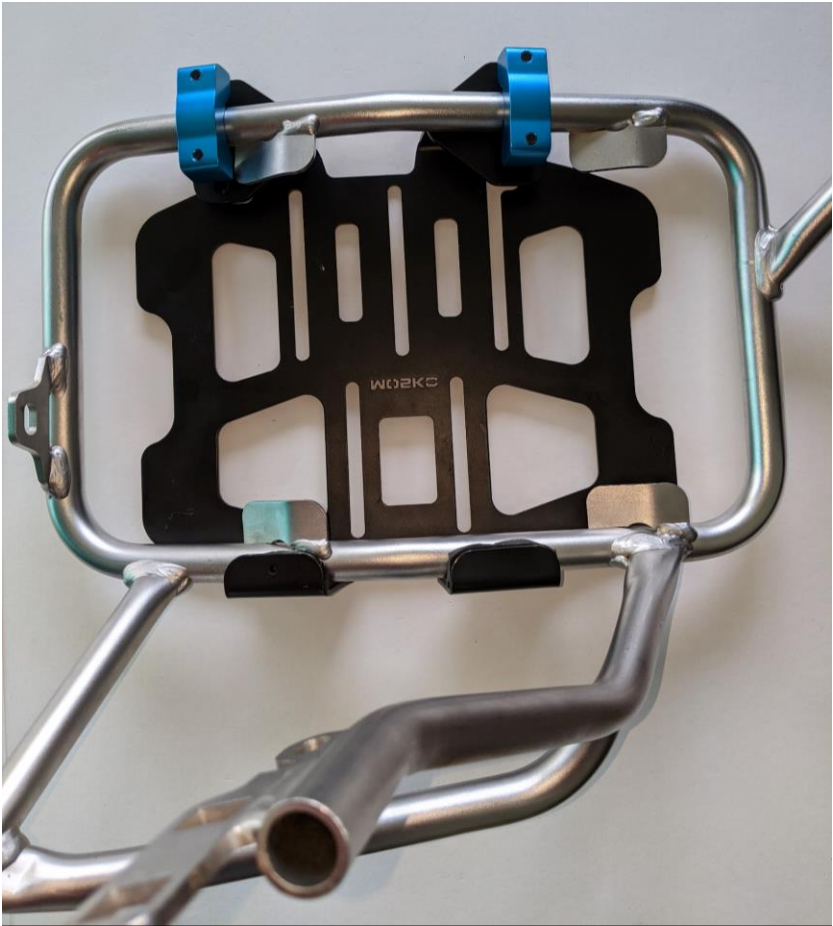
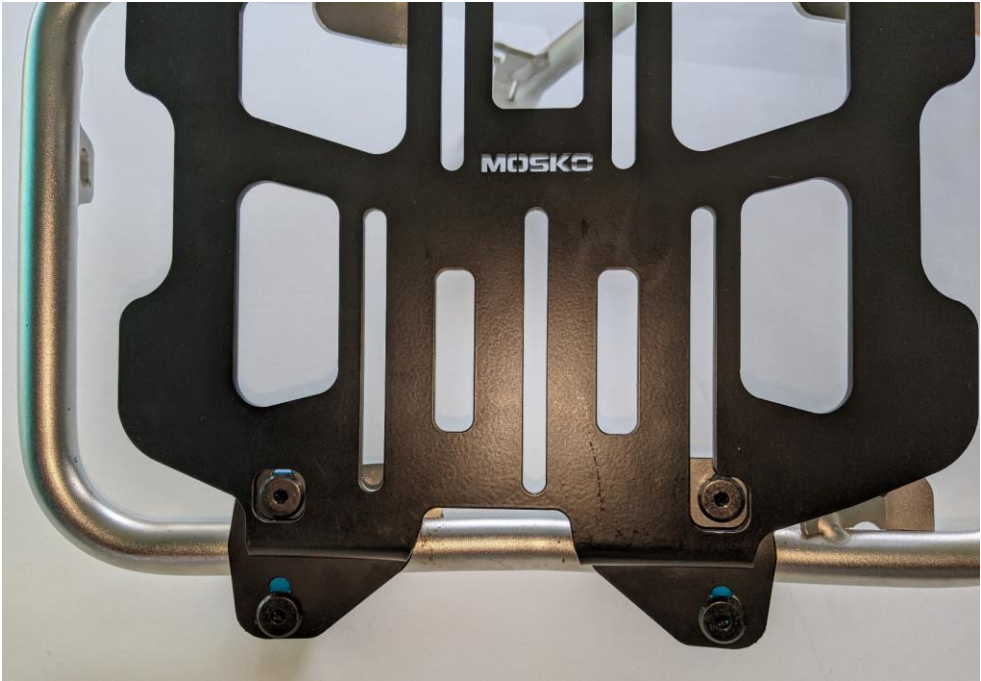




- Center the adaptor on the rack. The two bottom mounting tabs should sit flush to the bottom bar of the rack. Position one of the standard pucks on the inside of the rack around the lower bar. Thread two M6x30mm right side adaptor lower puck fasteners through the slots in one of the bottom mounting tabs. Tighten the fasteners down evenly, alternating between the two to maintain uniform clamping. Snug but do not tighten fully. Repeat for the other bottom mounting tab. Note: The top fasteners for each mounting tab must go through the rectangular cut outs at the bottom of the adaptor for them to go through the top holes on the mounting tab.

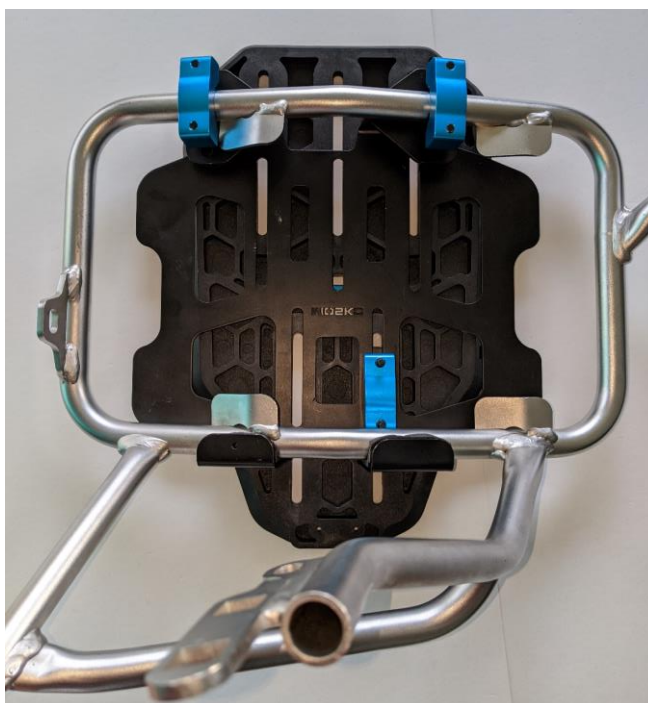


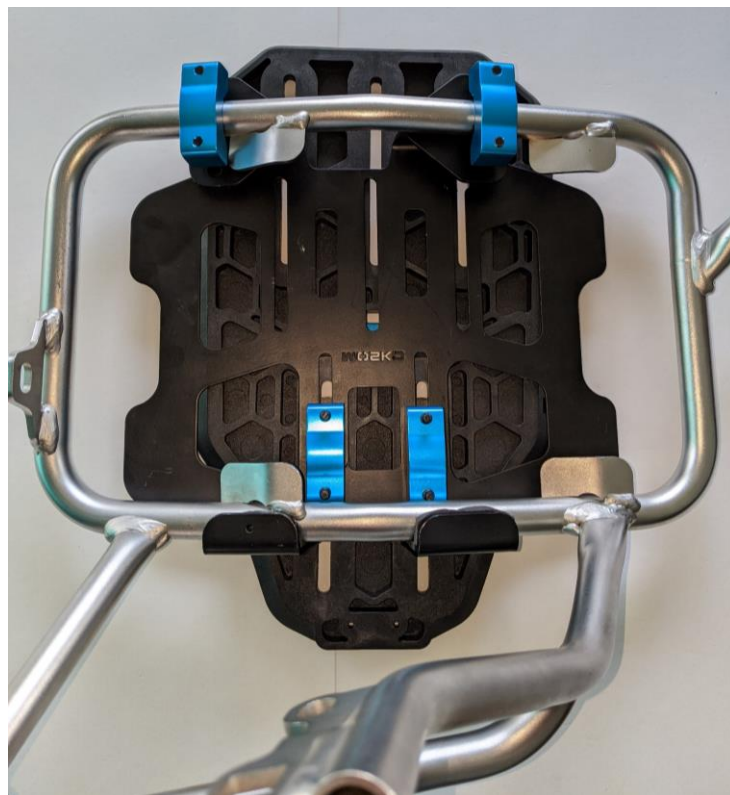






3. Use one standard elongated washer, two M6x40mm puck fasteners and a standard puck to attach the wedge to the adaptor through one of the upper slots. Repeat for the second upper slot. Note that these pucks do not go around the rack but do secure the wedge to the adaptor. Snug but do not tighten fully.

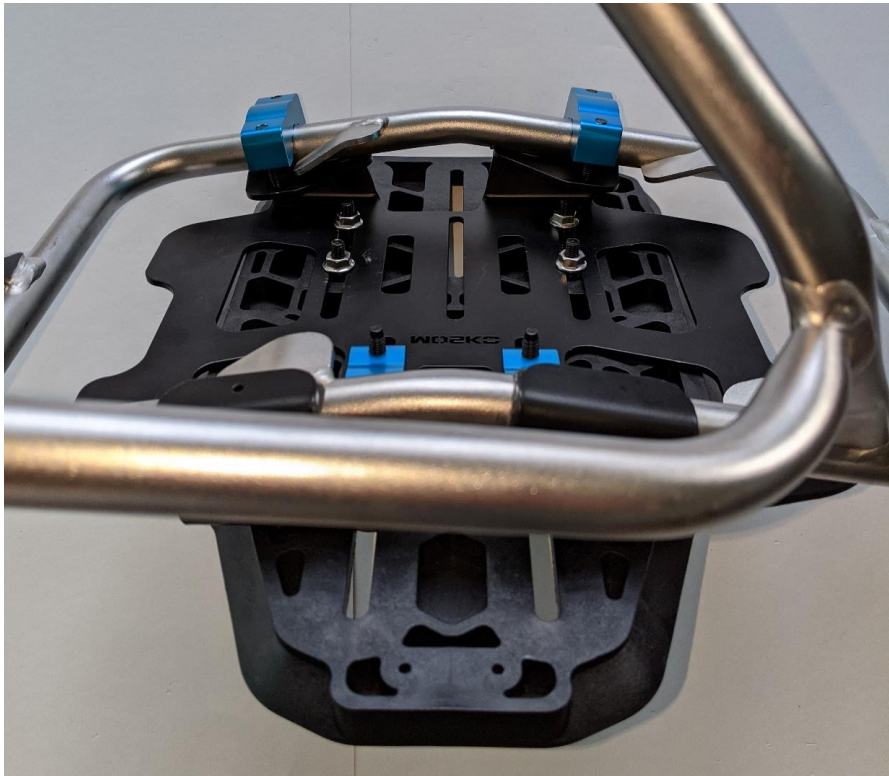






4. Place a standard elongated washer in the lower aft slot of the wedge and thread two of the M6x25mm wedge fasteners through it into two of the wedge fastener nuts. Tighten the fasteners down, snug but do not tighten fully. Repeat for the lower forward slot.







5. Before tightening the hardware down, adjust the vertical placement of the wedge to the desired height. Typical installation places the bag as low on the motorcycle as possible for a lower center of gravity, however bike height and riding conditions may dictate placing the bags higher on the rack. Bag height is set by the wedge height. Once the desired wedge / bag height is achieved fully tighten the fasteners down, alternating between the two on each puck to maintain uniform clamping. Tighten the four M6x30mm right side adaptor lower puck fasteners to 5 N*m (3.7 ft-lbs). Tighten all remaining fasteners to a final torque of 8 N*m (5.9 ft-lbs).