



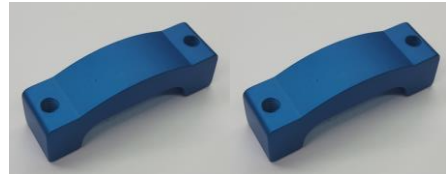
2005-2013 BMW GS1200 Adventure (Oil/Air Cooled) Adaptor Kit Installation Instructions

Included Parts:

Adaptor (quantity 1)



Large puck (quantity 2)



Large elongated washer (quantity 2)



Padded tape, 24" (quantity 1)



Additional Parts Used (included with Pannier Kit):

Standard puck (quantity 8)



Standard elongated washer (quantity 8)





M6x40mm puck fastener (quantity 16)



Torx Key (quantity 1)



Wedge (quantity 1)



Adaptor Installation - Exhaust Side (Left Side of Bike)

1. Cut padded tape to width of the six adaptor top hook surfaces. Place tape on the underside of the top of the hook first then both sides. Trim as desired.

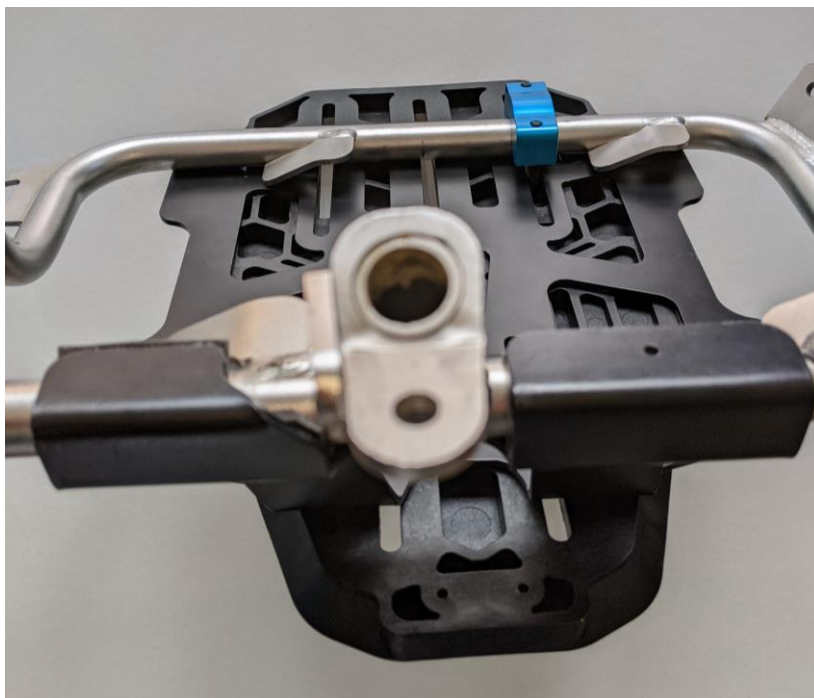




2. Center the adaptor aft top hook between the two mount bars on the top of the rack. Using the Torx key, one standard elongated washer, two M6x40mm puck fasteners and one standard puck attach the wedge to the adaptor and rack through the lower aft slot. Tighten the fasteners down evenly, alternating between the two to maintain uniform clamping. Snug but do not tighten fully.

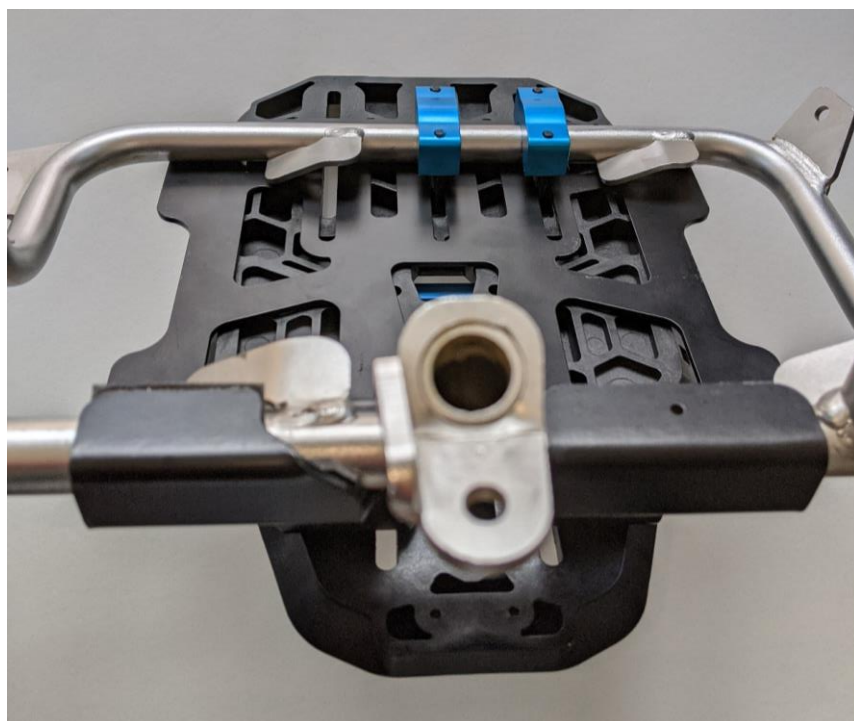






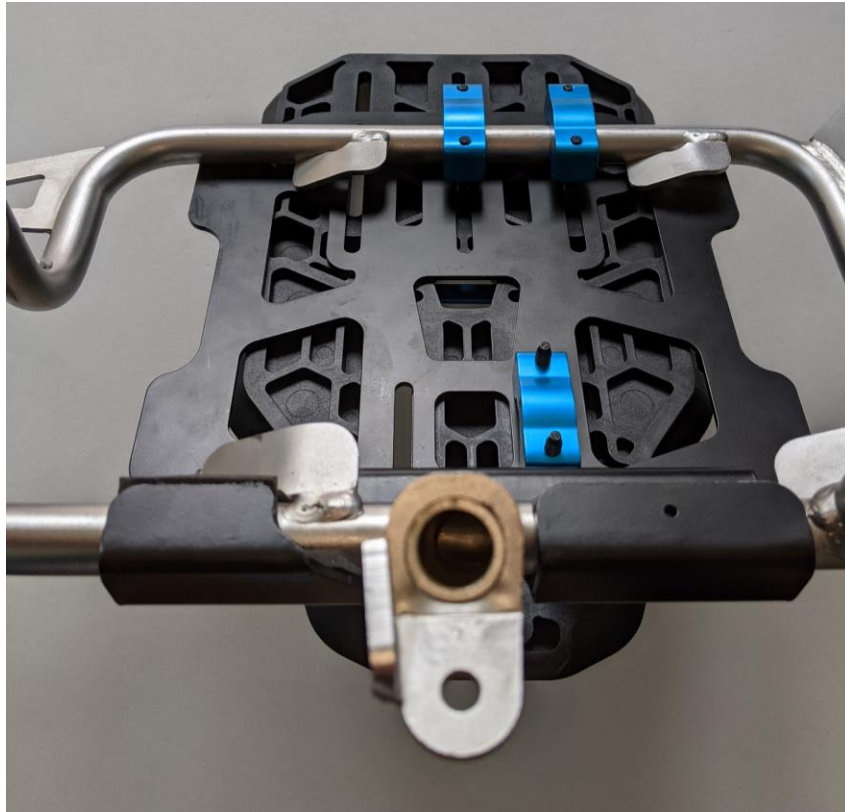
3. Repeat step 2 on the lower center slot using one standard puck, two M6x40mm puck fasteners and one standard elongated washer (Note: the forward lower slot is not used on this side due to the placement of the exhaust). Tighten the fasteners down evenly, snug but do not tighten fully.

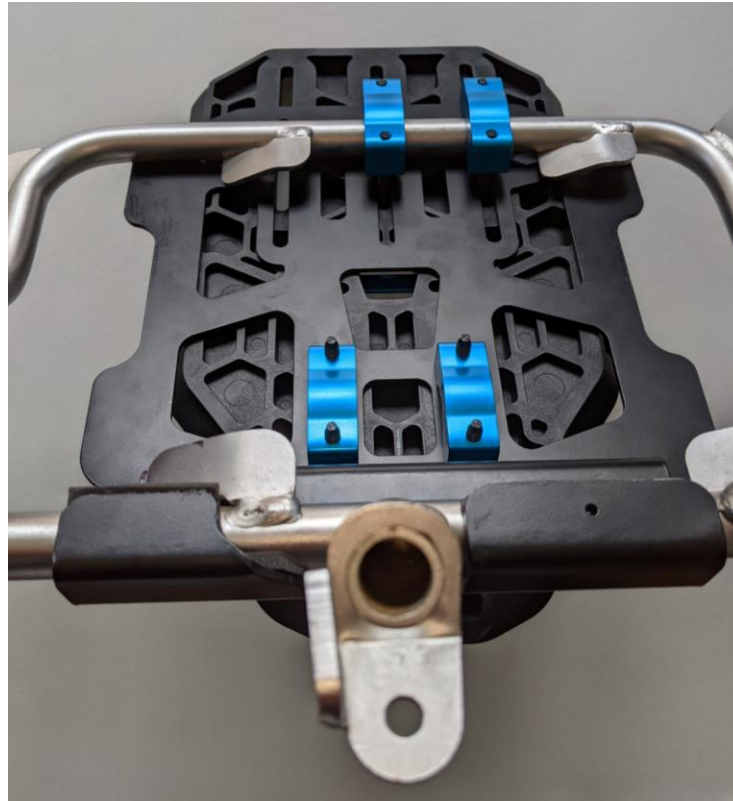




4. Use one standard elongated washer, two M6x40mm puck fasteners, and one standard puck to attach the wedge to the adaptor through one of the upper slots. Repeat for the second upper slot. Note that these pucks do not go around the rack, but do secure the wedge to the adaptor. Snug but do not tighten fully.







5. Before tightening the hardware down, adjust the vertical placement of the wedge to the desired height. Typical installation places the bag as low on the motorcycle as possible for a lower center of gravity, however bike height and riding conditions may dictate placing the bags higher on the rack. Bag height is set by the wedge height. Once the desired wedge / bag height is achieved fully tighten the fasteners down, alternating between the two on each puck to maintain uniform clamping. Tighten the fasteners to a final torque of 8 N*m (5.9 ft-lbs).

Non-Adaptor (Non-Exhaust) Side – Right Side of Bike

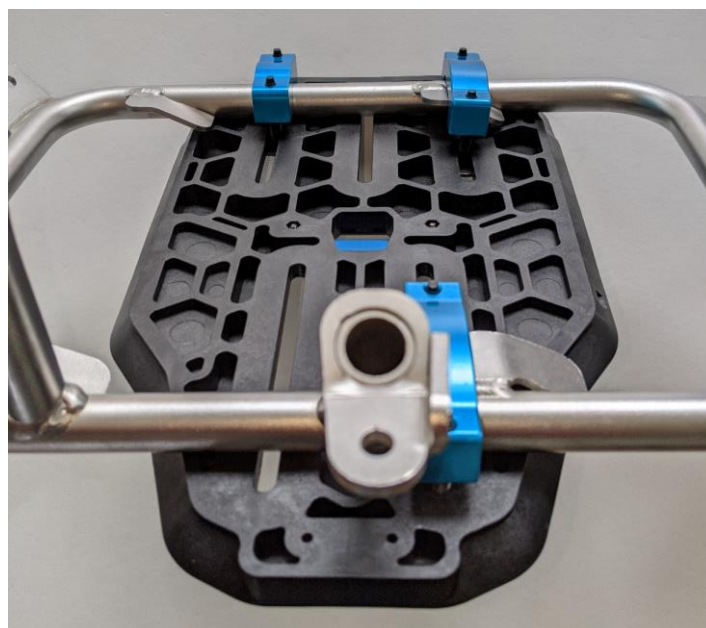
1. Center the wedge on the pannier rack so that the upper forward slot sits just forward of the upper mount bar. Using one large elongated washers, two M6x40mm puck fasteners and one large puck attach the wedge through the upper forward slot to the rack. Position the puck on the inside of the rack over the tab on the upper bar of the rack. Tighten the fasteners down evenly, alternating between the two to maintain uniform clamping. Snug but do not tighten fully. Repeat this process for the lower forward wedge slot using one large elongated washers, two M6x40mm puck fasteners and one large puck.

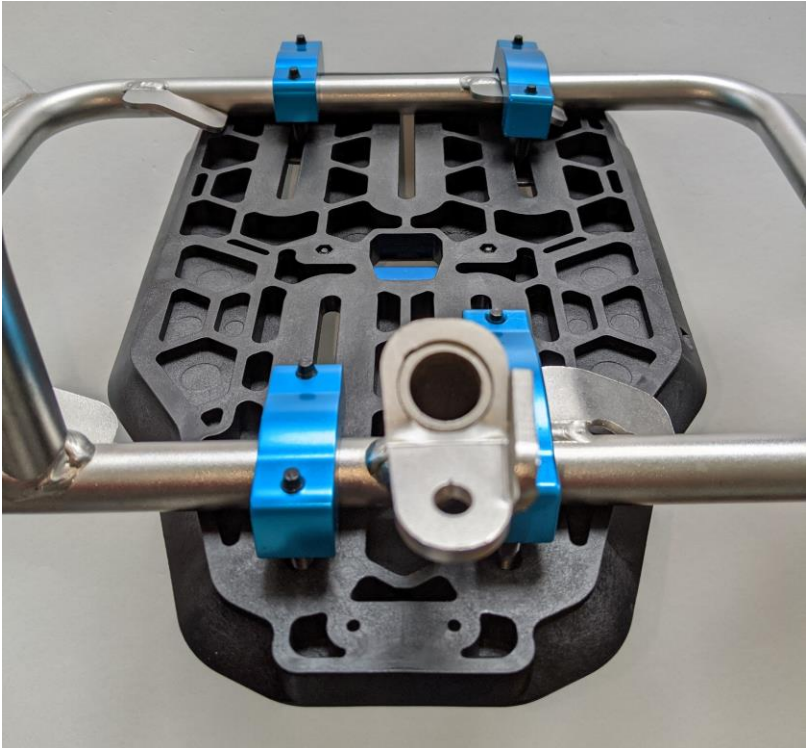
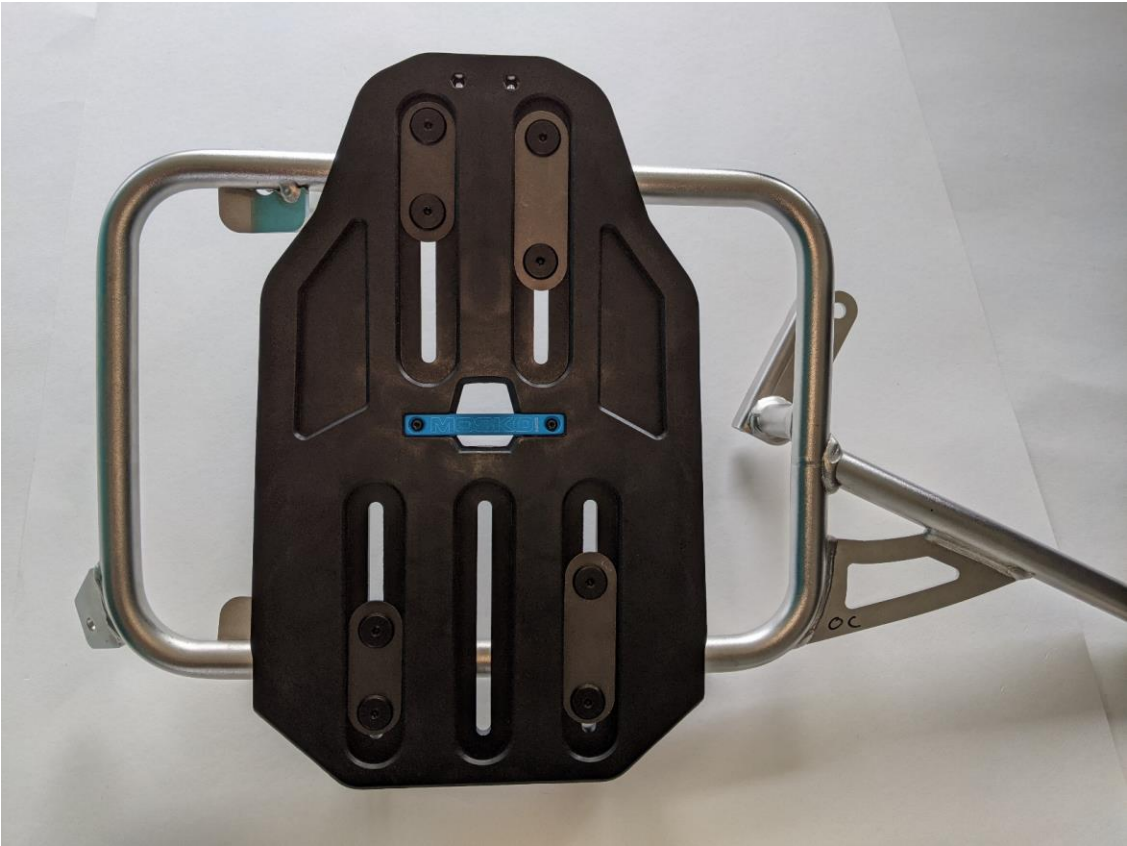


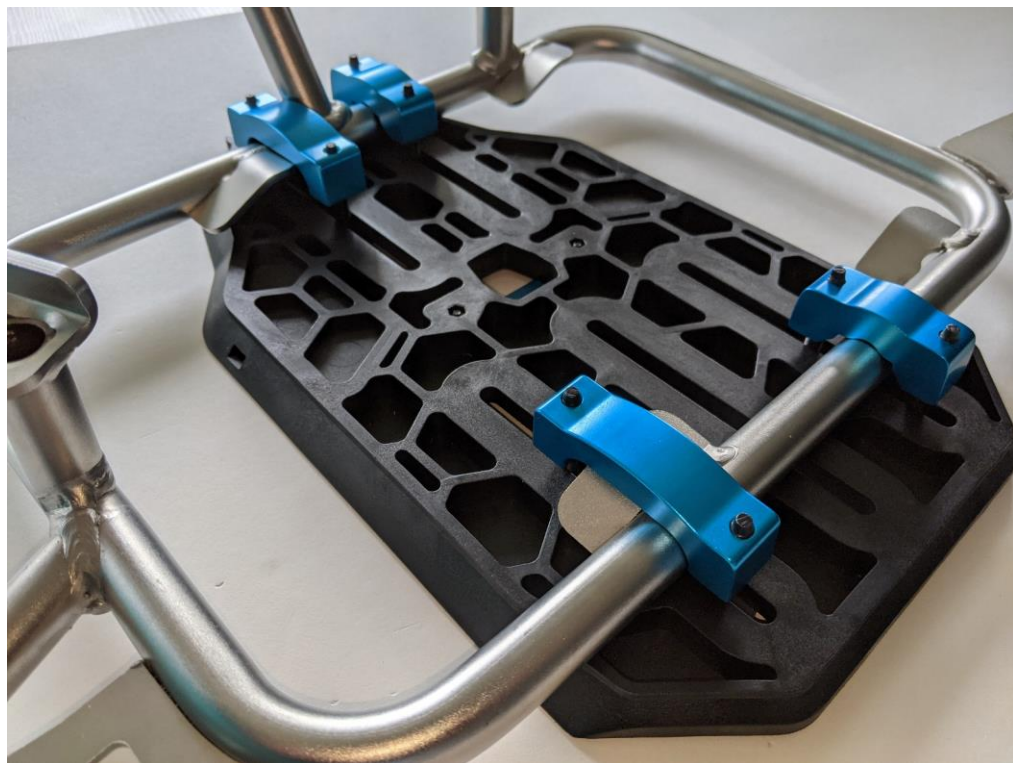
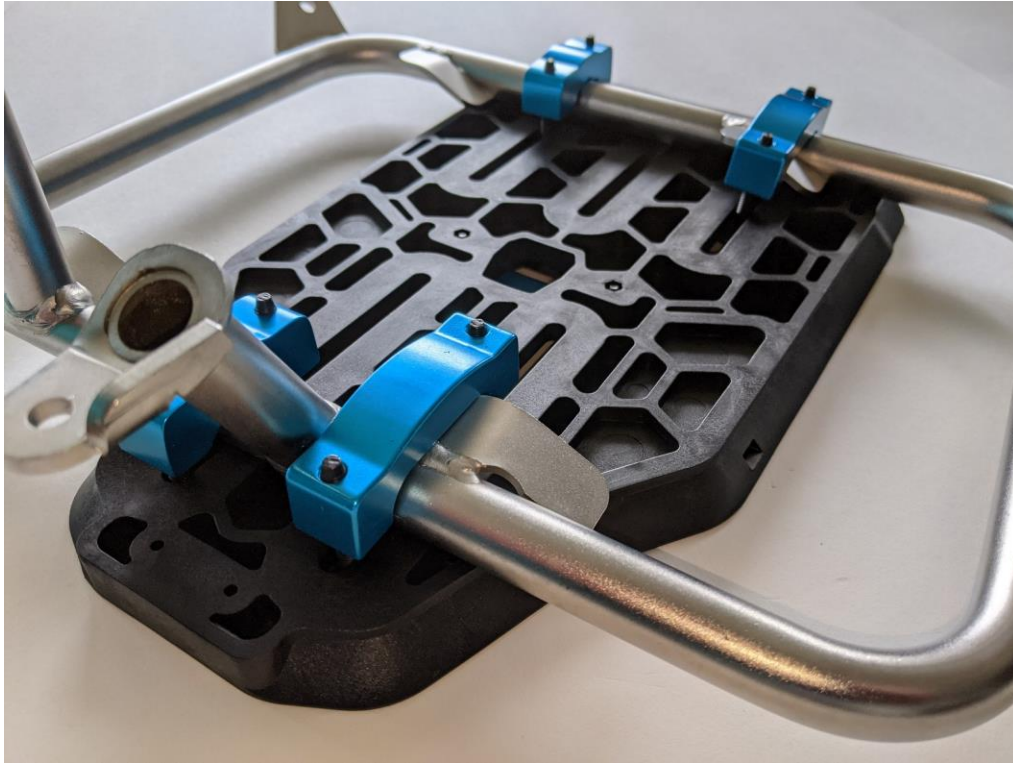




2. For the upper and lower aft slots use one standard elongated washer, two M6x40mm puck fasteners and one standard puck. Tighten the fasteners down evenly, snug but do not tighten fully.









3. Before tightening the hardware down, adjust the vertical placement of the wedge to the desired height. Typical installation places the bag as low on the motorcycle as possible for a lower center of gravity, however bike height and riding conditions may dictate placing the bags higher on the rack. Bag height is set by the wedge height. Once the desired wedge / bag height is achieved fully tighten the fasteners down, alternating between the two on each puck to maintain uniform clamping. Tighten the fasteners to a final torque of 8 N*m (5.9 ft-lbs).

