



Tips

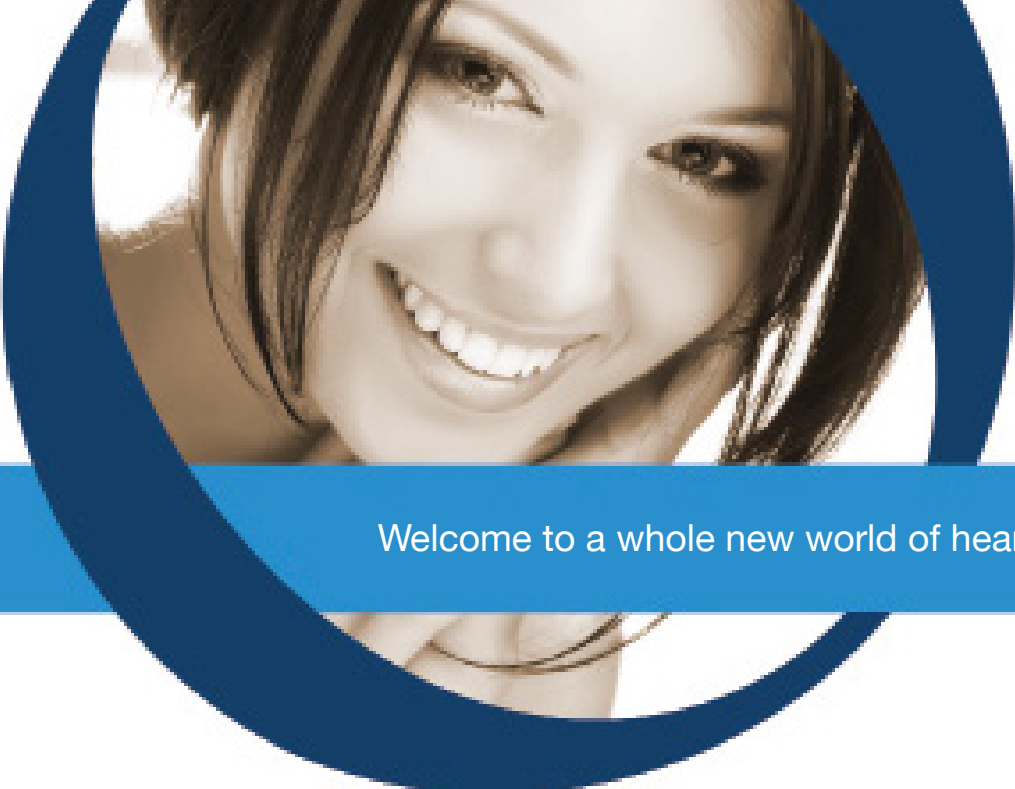
Three tips have been included with your hearing aid. These can be used if you experience any whistling (feedback) or to improve on the physical comfort. The three tips are different sizes: small, medium and large. The tips are pushed onto the end of the hearing aid, over the end with the wax guard. Please ensure you have pushed on the tip as far as possible before inserting the tip and hearing aid into your ear.

Memory Adjustment (HD250)

Push Button



Your device may have a Multi-Memory Push Button which provides up to four custom settings useful for different listening situations. After opening the battery door, the device starts in memory one. Push one time on the Push Button and the program will cycle up to the next memory. The number of beeps that you hear corresponds to the memory that you have set. The memories will cycle in sequence 1,2,3,4,1,2,3,4...etc.



Welcome to a whole new world of hearing™

Welcome back to the world of sound!™

A belief that in order to succeed, you must have a certain passion and desire to give your every endeavor your very best. We forge this very commitment to excellence into every hearing instrument in our portfolio.

HD90 HD150
HD250 HD390



HearingDirect Ltd
Unit 4 Nine Mile Water
Nether Wallop
SO20 8DR
United Kingdom



1-800-216-2331



CustomerCare@HearingDirect.com



HearingDirect.com

UG / HDGEN / USA 8 © 16



A rare combination of state of the art technology and custom craftsmanship brings you the best instruments available today. Currently, our products are distributed all over the world. We thank you for allowing us to assist with your hearing needs.

These instructions along with the guidance from HearingDirect.com will help you attain maximum benefit from your hearing instrument(s).

Identifying your device



Every instrument has a unique identifier. The first two numbers indicate the year it was manufactured, the next two letters indicate the instrument model, and the final numbers are the serial number of the instrument.

Company
00 XY 12345

Wax Protection It is very important to check that the wax filter is clean before every use. Use a soft brush to brush away any accumulated debris. The wax guard will need regular replacing. The Hear Clear wax guard is used on your hearing aid.

Inserting / Removing

Inserting your device

Before insertion, make sure the battery door is closed properly. To insert your instrument, hold it with your thumb and index finger. Slowly guide the instrument into your ear canal until you feel resistance. Gently push the instrument into your ear until it sits comfortably in your canal.



To ease insertion, you may wish to pull up slightly on the top of your ear with your other hand as you push the hearing instrument into your ear.

Removing your device

To remove, gently pull on the instrument by the pull string with your thumb and index finger, do not pull by battery door. Don't forget to turn the instrument off, by opening the battery door after you remove it from your ear.

Powering your device

Batteries - This device uses a 10A battery.

ON - With your finger, gently open the door. Insert battery and close the door. If your instrument is equipped with a power on delay, you will be given several seconds to seat the device comfortably in your ear before it turns on.



When placing the battery in your instrument, be sure to position the positive (+) symbol on the side of the battery to line up with the positive (+) symbol shown on the battery door.

OFF - To turn your hearing instrument off, simply open the battery door wide enough so that the internal contacts are no longer touching the battery. Store in a safe dry place.

CAUTION: Batteries are dangerous if swallowed! Keep batteries out of the reach of children. Never put batteries in your mouth for any reason they are easily swallowed. In the event a battery has been swallowed, seek immediate medical attention. For more information call the National Battery Hotline at 202-625-3333.

AirTouch™ Multi Memory (HD390 Only)

AirTouch Memory allows you to select between memories with the greatest of ease. Simply tap the outer part of your ear canal and the sound pressure triggers AirTouch. This device does not require buttons or switches and does not need to be touched to change memories.



With your fingers together, lightly tap the ear canal area. This will toggle successively from the first memory through the fourth, and then back to the first.

A few minutes of practice should be sufficient for you to become comfortable with AirTouch Technology.

