

# Just Delivered: Accell DisplayPort 1.2 to HDMI 2.0 Active Adapter

**Subject:** [General Tech](#) | February 11, 2016 - 04:48 PM | [Ken Addison](#)

**Tagged:**

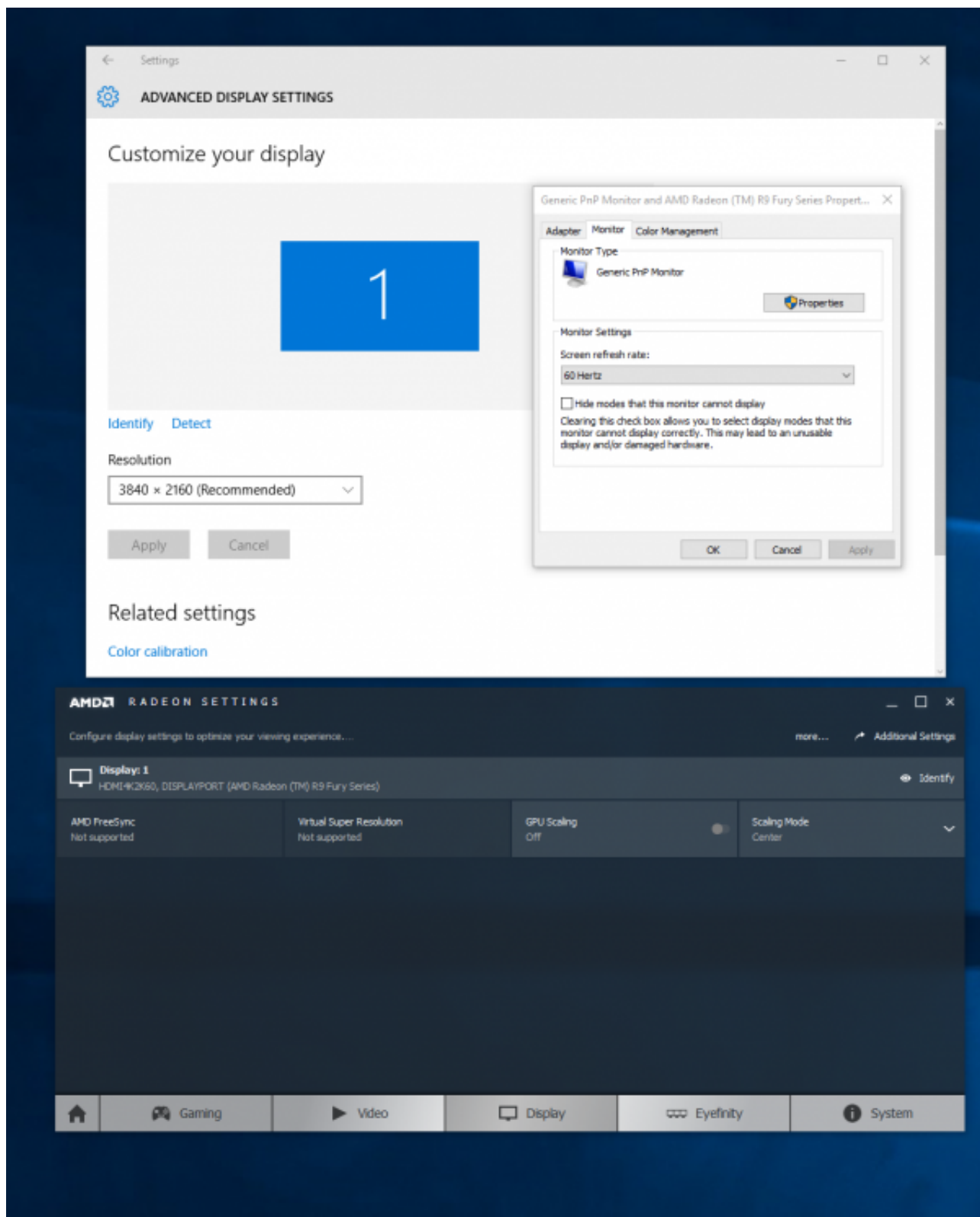
Fabled to be "coming soon" since the launch of the AMD R9 Fury X back in June, today we finally got our hands on our first DisplayPort 1.2 to HDMI 2.0 adapter.



Coming from Accell, the aptly named DisplayPort 1.2 to HDMI 2.0 Active Adapter is a fairly self explanatory product. This adapter sits inline between your DisplayPort video card and HDMI TV in order to convert between the two interfaces. Previously, the only available adapters supported up to HDMI 1.4a, which only allowed for 30Hz connectivity at 4K.



Users looking to connect their 4K TV to a PC had their GPU options severely limited to exclude all current AMD video cards and NVIDIA video cards below the GTX 950.



A quick test with the Accell DisplayPort 1.2 to HDMI 2.0 adapter with the AMD R9 Nano alongside [our trusty Wasabi Mango UHD420 display](#) proved that this adapter did indeed bring full 4K support at 60Hz and 4:4:4 color via HDMI on the Nano. This helps the R9 Nano become more useful in [compact, HTPC builds](#).

