




ankur[®]

Seeing Is Truly Believing
Since 1979



Edition 2020-21

The People

Xpertz Ankur Lights private limited, incepted in the year 2006, a sister concern of **Ankur Lighting** which was founded by Late Shri **R.K. Shah in 1979** with the philosophy of manufacturing lighting fixtures with a vision of  ergonomically designed, thermally strong and simple to install. Ankur Lighting has hugely risen over the last 40 years from the modest manufacturer to one of the **leading LED luminaries original equipment manufacturer (OEM) , exporter and corporate retailer** in the lighting industry.

Today, Xpertz Ankur lights, having **the manufacturing base at Sahibabad industrial area, Ghaziabad**, command leadership amongst the LED luminaries like tracks, vintage Chandeliers collection, panels, down lighters, street lights, flood lights, high bays, bollards, floor lights, hanging lights, spikes, strips, wall lights, facade lights, spot lights, underwater, burial lights and customized smart lighting automation through programmable dimming and colour temperature.

We have a continuous product upgradation through stringent **In-house R&D facility**, adapting to the latest technological advancements and better understanding of the customer's lighting needs.

Xpertz Ankur Lighting has a total commitment to a "**Customer First**" attitude and to develop, test and deploy energy efficient and eco friendly lighting solutions that are best suited to Indian environment. We, at Xpertz Ankur Lights always strive hard to realize our motto.

"Seeing is Truly Believing"

WHY ?



- 
BIS APPROVED
LED DRIVERS
- 
PAN INDIA
AFTER SALES
SERVICE SUPPORT
- 
IN - HOUSE
MANUFACTURING
BASE AT SAHIBABAD
- 
HIGH QUALITY
COMPONENT
LEVEL USAGE
- 
MADE
FOR
INDIA
ADAPTED AS PER
INDIAN DIVERSE
POWER CONDITIONS

SALIENT FEATURES & BENEFITS OF THE LED TECHNOLOGY



Long, Maintenance- Free Life
More than 30,000 hrs



Energy Efficient
60% more saving than conventional lights



High Power Factor
more than 90 Percent



Eco - Friendly, No Mercury



High Light Output
3 times brighter than conventional
light sources of similar wattage



Uniform Light Distribution

CONTENT

	About us	Page Number 01		LED Track Light & Accessories	Page Number 25-29
	Content / LED Salient Features	Page Number 02		LED Wall Washer	Page Number 30
	LED Lamp	Page Number 03-04		LED Up Down Light	Page Number 31-32
	LED Module Lamp	Page Number 05-06		LED Spike Light	Page Number 33-34
	LED Batten / Tubelight	Page Number 07-08		LED Burial Light	Page Number 35-36
	LED Linea	Page Number 09-10		LED Highbay	Page Number 37-38
	LED Recess Panel	Page Number 11-13		LED Street Light	Page Number 39-40
	LED Surface Panel	Page Number 14-16		LED Flood Light	Page Number 41-42
	LED Panel 2' x 2' / 1' x 4'	Page Number 17-18		Modular Casing	Page Number 43
	LED Down Lighter	Page Number 19-21		Euro Series / LED Filament lamp	Page Number 44
	LED Spot Light	Page Number 22		Wall Light / Bollard	Page Number 45
	LED Strip Light	Page Number 23-24		Hanging / Step Light / Vintage	Page Number 46

ankur[®] LED Glo Lamp

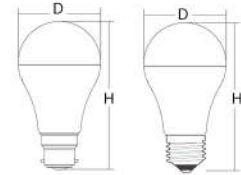


BIS Approved Driver

Ergonomically and aesthetically designed LED Spherical lamps with B22 and E27 base, offering energy savings of up to 80% to replace the incandescent and CFL lamps. Equipped with high grade poly carbonate diffuser for effective light distribution and the thick aluminium base plate for the efficient thermal management for the longer life.



Input Operating Voltage: 100-300V AC
 Lumen Efficiency: 90 -100 lm/w
 Colour Temperature(CCT): 3000K/6500K/R/G/B/Y
 Power Factor (PF): > 0.90 above than 3W
 CRI: Ra > 80
 Light Beam Angle: 180°
 Surge Protection: 2.5 KVA
 Optics: Poly carbonate Diffuser
 Operating Temperature Range: -20°C to +55°C
 Humidity Working Range: 0 to 95%



B-22 Base lamp E-27 Base lamp

LED Chip: **OSRAM EDISON** 25,000Hrs



Wattage	Product Description	Lumen Output			Dimensions		Product Code
		3000K	4000K	6500K	D x H(mm)		
0.5W	GLO LED LAMP	45 lm	47.5 lm	50 lm	42 x 72		XAL-GLO/LP-A42/0.5W/WW-B22
3W	GLO LED LAMP	270 lm	285 lm	300 lm	50 x 87		XAL-GLO/LP-A50/3W/CW-B22
5W	GLO LED LAMP	450 lm	475 lm	500 lm	54 x 95		XAL-GLO/LP-A54/5W/CW-B22
7W	GLO LED LAMP	630 lm	665 lm	700 lm	57 x 103		XAL-GLO/LP-A57/7W/WW-B22
9W	GLO LED LAMP	810 lm	855 lm	900 lm	57 x 103		XAL-GLO/LP-A57/9W/WW-B22
12W	GLO LED LAMP	1080 lm	1140 lm	1200 lm	67 x 110		XAL-GLO/LP-A67/12W/CW-B22
15W	GLO LED LAMP	1350 lm	1425 lm	1500 lm	67 x 117		XAL-GLO/LP-A67/15W/CW-B22
18W	GLO LED LAMP	1620 lm	1710 lm	1800 lm	75 x 125		XAL-GLO/LP-A75/18W/WW-B22
10W	GLO LED T-LAMP	900 lm	950 lm	1000 lm	L-255		XAL-GLO/T-LP-10W/CW-B22

*Also Available in E27 / E16 and E14 Lamp base /Candle Lamps.

Application Areas



ankur[®] LED Module Lamp



BIS Approved Driver

Aesthetically designed LED MR module lamps GU10 , ZR and SPEEDO to fit into various modular casings, providing the different light colours,wattages and offering energy savings of up to 80%, equipped with high grade aluminium PDC housing with the bigger fins for the efficient thermal management.

Input Operating Voltage: AC 100-300V, 50/60 Hz
 Lumen Efficiency: 100 - 115 lm/W
 Colour Temperature(CCT): 3000K / 4000K / 6500K
 Power Factor (PF): > 0.90 above than 3W
 CRI: Ra > 80
 Light Beam Angle: 12°/ 24°/ 36°/ 48°/ 60°
 Surge Protection: 2.5 Kva
 Optics: Glass / PMMA
 Total Harmonic Distortion (THD): <10%
 Operating Temperature Range: -20°C to +55°C



LED Chip: **OSRAM EDISON** 25,000Hrs



Product Code	Wattage	Lumen output	
		3000K	6500K
XAL-ZR/ML-3W/WW	3W	300 lm	330 lm
XAL-ZR/ML-5W/WW	5W	500 lm	550 lm
XAL-ZR/ML-7W/WW	7W	700 lm	770 lm
XAL-ZR/ML-12W/WW	12W	1200 lm	1320 lm
XAL-ZR/ML-30W/WW	30W	3000 lm	3300 lm
XAL-ZR/ML-40W/WW	40W	4000 lm	4400 lm
XAL-SPDO/ML-3W/WW	3W	300 lm	330 lm
XAL-SPDO/ML-5W/WW	5W	500 lm	550 lm

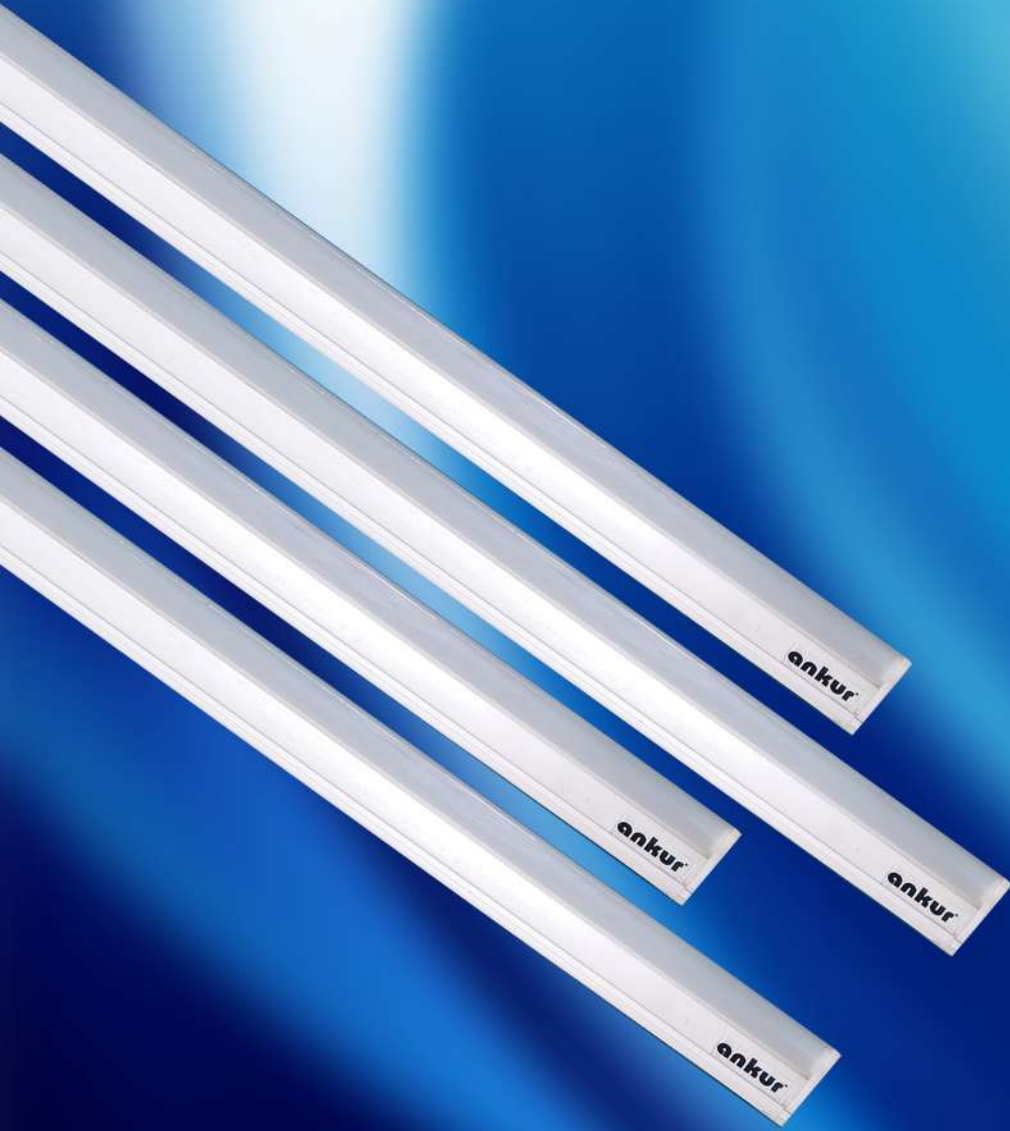
Product Code	Wattage	Lumen output	
		3000K	6500K
XAL-SPDO/ML-7W/WW	7W	700 lm	770 lm
XAL-SPDO/ML-9W/WW	9W	900 lm	990 lm
XAL-SPDO/ML-12W/WW	12W	1200 lm	1320 lm
XAL-SPDO/ML-15W/WW	15W	1500 lm	1650 lm
XAL-GU/ML-3W/WW	3W	300 lm	300 lm
XAL7-GU/ML-5W/WW	5W	500 lm	500 lm
XAL-GU/ML-6W/WW	6W	600 lm	600 lm
XAL-GU/ML-7W/WW	7W	700 lm	700 lm

Application Areas

- Shopping Malls
- Retail Stores/ Showrooms
- Hospital/ Institutions
- Residential
- Super Markets
- Corporate Offices
- Restaurants/ Hotels
- Art Galleries/ Museum



ankur[®] LED Batten / Tube Light



BIS Approved Driver

T-8 / T-5 Led Batten tube lights maintains high level of luminous flux over the greater period of life, have flicker free operation, are equipped with poly carbonate housing with anti glare diffuser, in built heat sink for better thermal management, 3KVA surge protection with the energy efficient electronic driver.



ankur
Smart Ankur Lights Private Limited

LED BATTEN / TUBELIGHT



Input Operating Voltage: 90-270VAC / 50-60 Hz

Lumen Efficiency: 90 - 105 lm/w

Colour Temperature(CCT): 3000K/4000K/6000K

Power Factor (PF): > 0.90

CRI: Ra > 80

Light Beam Angle: 120°

Surge Protection: 3 KVA

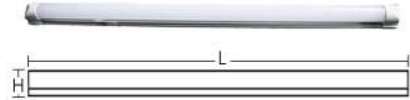
Electronic Driver Efficiency: >85%

Optics: Polycarbonate Diffuser

Operating Temperature Range: -10°C to + 50°C

Electronic Driver: **ankur** PHILIPS **FULHAM**

LED Chip: PHILIPS LUMILEDS OSRAM EDISON **25,000Hrs**



Wattage	Product Description	Lumen Output			Dimensions (L x H)mm	Product Code
		3000K	4000K	6500K		
6W	T-5 LED Batten	540 lm	570 lm	630 lm	310 x 36	XAL-BATTEN/T5-6W/CW
12W	T-5 LED Batten	1080 lm	1140 lm	1260 lm	610 x 36	XAL-BATTEN/T5-12W/CW
20W	T-5 LED Batten	1900 lm	1900 lm	2100 lm	1200 x 36	XAL-BATTEN/T5-20W/CW
10W	T-8 LED Tube Light	900 lm	950 lm	1000 lm	610 x 36	XAL-TUBE/T8-10W/CW
20W	T-8 LED Tube Light	1900 lm	1900 lm	2100 lm	1200 x 36	XAL-TUBE/T8-20W/CW

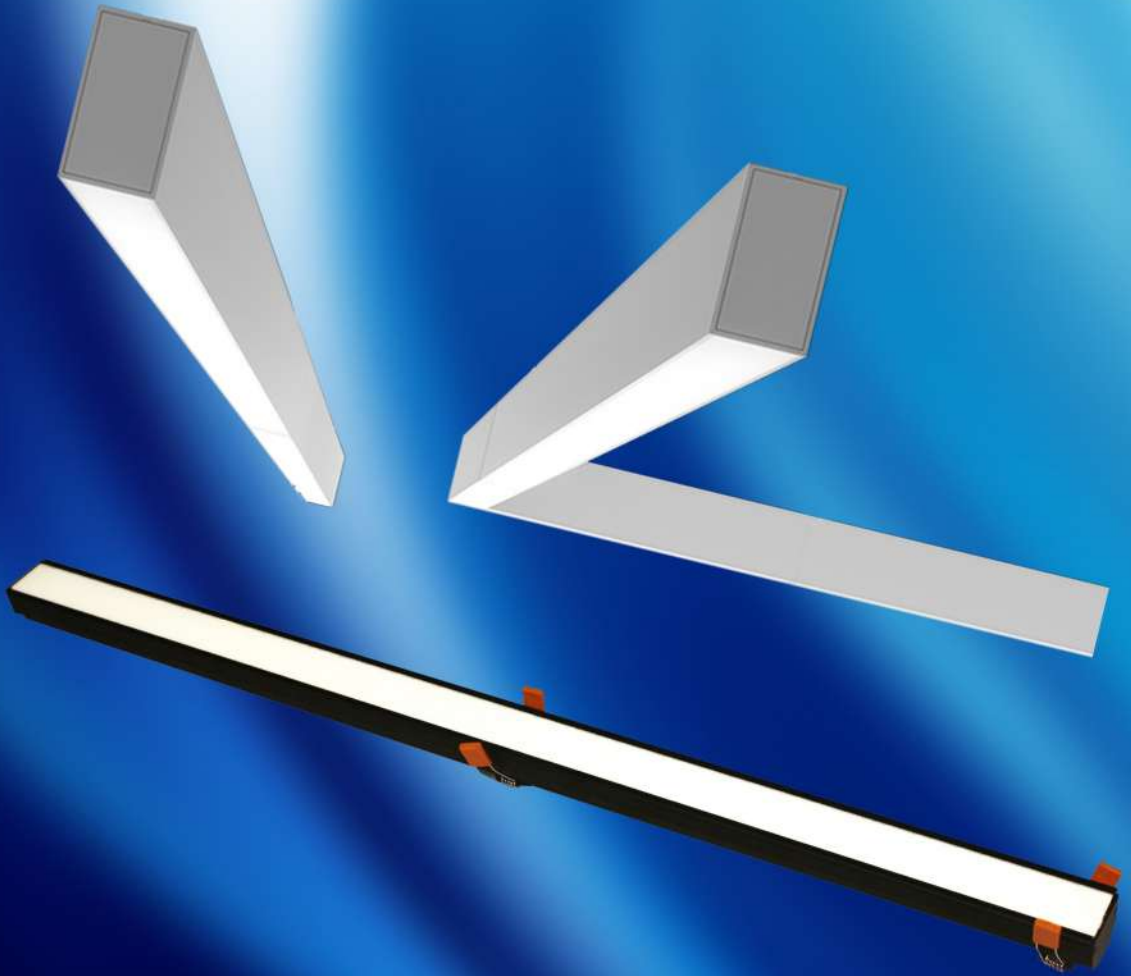
*Also Available in T-8 / T-5 retro-fitting.

Application Areas

- Advertisement Box
- Retail Stores/ Showrooms
- Hospital/ Institutions
- Residential
- Super Markets
- Factories/ Offices
- Restaurants/ Hotels
- Commercial Complexes



ankur[®] LED Linea Profile Light



BIS Approved Driver

LED Linea offers a uniquely clean, simple lighting system, involves uniform lines of light across walls and ceilings. The minimal design offers a total-light effect providing outstanding visual comfort with reductions in luminance levels. The numerous installation variants fulfill the needs of the most demanding lighting designers and thus make it the ideal solution for spaces of every shape.



ankur
Specialty Ankur Lights Private Limited

LED LINEA PROFILE LIGHT



Input Operating Voltage: 90-270VAC / 50-60 Hz

Lumen Efficiency: 100-110 lm/w

Colour Temperature(CCT): 3000K/4000K/6000K

Power Factor (PF): >0.90

CRI: Ra > 80

Light Beam Angle: 120°

Surge Protection: 2.5 KVA

Electronic Driver Efficiency: >85%

Optics: Polycarbonate Diffuser

Operating Temperature Range: -10°C to +50°C

Electronic Driver: **ankur** PHILIPS **FULHAM**

LED Chip: PHILIPS LUMILEDS OSRAM EDISON

30,000Hrs



Product Description	Linea Width (mm)	Wattage Per Meter	Product Code
LED Linea Surface	14mm	10W	XAL-LINEA/L14-10W/NW
LED Linea Recessed / Surface	25mm	20W	XAL-LINEA/L25-20W/NW
LED Linea Recessed / Surface	45mm	20W	XAL-LINEA/L45-20W/NW
LED Linea Recessed / Surface	45mm	40W	XAL-LINEA/L45-40W/NW
LED Linea Recessed / Surface	50mm	40W	XAL-LINEA/L50-40W/NW

*Linea widths above 14mm are also available with hanging arrangements as per profile requirements.

Application Areas

- Shopping Malls
- Retail Stores/ Showrooms
- Hospital/ Institutions
- Residential
- Super Markets
- Corporate Offices
- Restaurants/ Hotels
- Commercial Complexes



ankur[®] LED Liva Recess Panel



BIS Approved Driver

LED recess mounted aesthetically designed panels equipped with die-cast aluminium housing having smooth powder coated finish and anti-glare UV stabilized polycarbonate diffuser allowing 95% of uniform lux spread over. In built heat sink for better thermal management with the energy efficient electronic driver having 3 KVA surge protection.

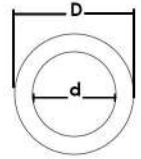
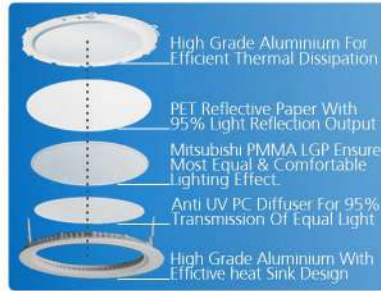


ankur
Ankur Lights Private Limited

LED LIVA RECESS PANEL



Input Operating Voltage: 90-300VAC / 50-60 Hz
 Lumen Efficiency: 90 - 105 lm/w
 Colour Temperature(CCT): 3000K/4000K/6500K
 Power Factor (PF): >0.95
 CRI: Ra > 80
 Light Beam Angle: 120°
 Surge Protection: 3 KVA
 Electronic Driver Efficiency: >85%
 Optics: Polycarbonate Diffuser
 Operating Temperature Range: -10°C to +50°C



Diameter: D
Cutout Diameter: d

Electronic Driver: **ankur** PHILIPS FULHAM

LED Chip: PHILIPS LUMILEDS OSRAM EDISON 30,000Hrs



Wattage	Lumen Output			Dimensions (D)mm	Cutout (d)mm	Product Code
	3000K	4000K	6500K			
6W	540 lm	570 lm	630 lm	115	95	XAL-LIVA/RPL-RD/6W/NW
9W	810 lm	855 lm	945 lm	115	95	XAL-LIVA/RPL-RD/9W/NW
12W	1080 lm	1140 lm	1260 lm	165	145	XAL-LIVA/RPL-RD/12W/NW
15W	1350 lm	1425 lm	1575 lm	165	145	XAL-LIVA/RPL-RD/15W/NW
18W	1620 lm	1710 lm	1890 lm	200	175	XAL-LIVA/RPL-RD/18W/NW
22W	1980 lm	2090 lm	2310 lm	200	175	XAL-LIVA/RPL-RD/22W/NW

Application Areas

- Shopping Malls
- Retail Stores/ Showrooms
- Hospital/ Institutions
- Residential
- Super Markets
- Corporate Offices
- Restaurants/ Hotels
- Commercial Complexes





ankur
Near 12 Ankur Lights Private Limited

LED LIVA RECESS PANEL



Input Operating Voltage: 90-300VAC / 50-60 Hz

Lumen Efficiency: 90 -105 lm/w

Colour Temperature(CCT): 3000K/4000K/6500K

Power Factor (PF): >0.95

CRI: Ra > 80

Light Beam Angle: 120°

Surge Protection: 3 KVA

Electronic Driver Efficiency: >85%

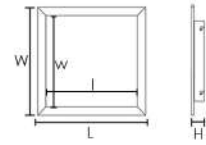
Optics: Polycarbonate Diffuser

Operating Temperature Range: -10°C to +50°C

Electronic Driver: **ankur** PHILIPS **FULHAM**

LED Chip: PHILIPS LUMILEDS OSRAM EDISON

30,000Hrs



Dimension: L X W
Cutout Dimension: l x w



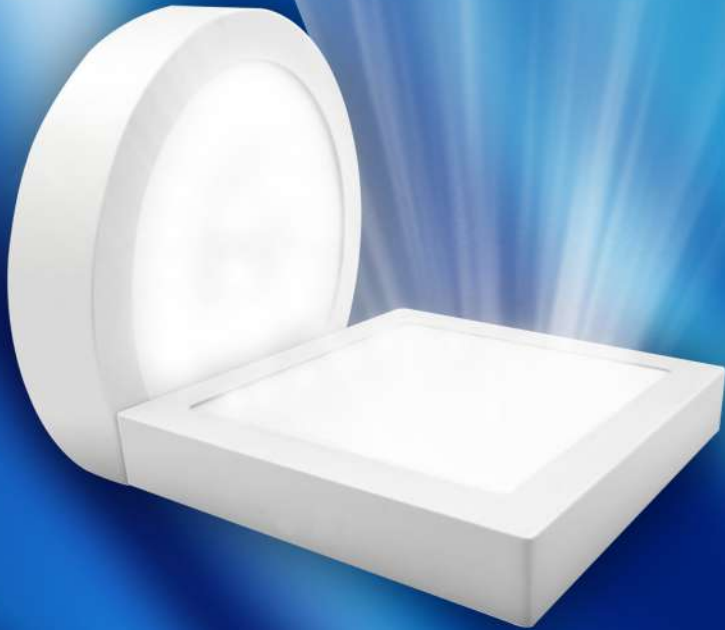
Wattage	Lumen Output			Dimensions (L x W)mm	Cutout (l x w)mm	ProductCode
	3000K	4000K	6500K			
6W	540 lm	570 lm	630 lm	115 x 115	95 x 95	XAL-LIVA/RPL-SQ/6W/WW
9W	810 lm	855 lm	945 lm	115 x 115	95 x 95	XAL-LIVA/RPL-SQ/9W/WW
12W	1080 lm	1140 lm	1260 lm	165 x 165	145 x 145	XAL-LIVA/RPL-SQ/12W/WW
15W	1350 lm	1425 lm	1575 lm	165 x 165	145 x 145	XAL-LIVA/RPL-SQ/15W/WW
18W	1620 lm	1710 lm	1890 lm	200 x 200	185 x 185	XAL-LIVA/RPL-SQ/18W/WW
22W	1980 lm	2090 lm	2310 lm	200 x 200	185 x 185	XAL-LIVA/RPL-SQ/22W/WW

Application Areas

- Shopping Malls
- Retail Stores/ Showrooms
- Hospital/ Institutions
- Residential
- Super Markets
- Corporate Offices
- Restaurants/ Hotels
- Commercial Complexes



ankur[®] LED Liva Surface Panel



BIS Approved Driver

LED surface mounted sterdy ergonomically designed panels equipped with die-cast aluminium housing having smooth powder coated finish and anti-glare UV stabilized polycarbonate diffuser allowing 95% of uniform lux spread over. In built heat sink for better thermal management with the energy efficient electronic driver having 2.5 KVA surge protection.



ankur
Ankur Lights Private Limited

LED LIVA SURFACE PANEL



Input Operating Voltage: 90-300VAC / 50-60 Hz

Lumen Efficiency: 90 - 105 lm/w

Colour Temperature(CCT): 3000K/4000K/6500K

Power Factor (PF): >0.95

CRI: Ra > 80

Light Beam Angle: 120°

Surge Protection: 2.5 KVA

Electronic Driver Efficiency: >85%

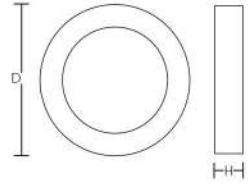
Optics: Polycarbonate Diffuser

Operating Temperature Range: -10°C to +50°C

Electronic Driver: **ankur** PHILIPS **FULHAM**

LED Chip: PHILIPS LUMILEDS OSRAM EDISON

30,000Hrs



Wattage	Lumen Output			Dimensions (D)mm	Product Code
	3000K	4000K	6500K		
6W	540 lm	570 lm	630 lm	105	XAL-LIVA/SPL-RD/6W/WW
9W	810 lm	855 lm	945 lm	105	XAL-LIVA/SPL-RD/9W/WW
12W	1080 lm	1140 lm	1260 lm	155	XAL-LIVA/SPL-RD/12W/WW
15W	1350 lm	1425 lm	1575 lm	155	XAL-LIVA/SPL-RD/15W/WW
18W	1620 lm	1710 lm	1890lm	205	XAL-LIVA/SPL-RD/18W/WW
22W	1980 lm	2090 lm	2310 lm	205	XAL-LIVA/SPL-RD/22W/WW

Application Areas

- Shopping Malls
- Retail Stores/ Showrooms
- Hospital/ Institutions
- Residential
- Super Markets
- Corporate Offices
- Restaurants/ Hotels
- Commercial Complexes



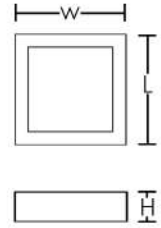
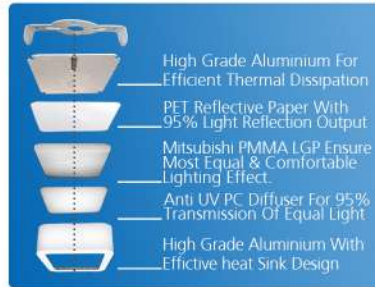


ankur
Specialty Ankur lights Private limited

LED LIVA SURFACE PANEL



Input Operating Voltage: 90-300VAC / 50-60 Hz
 Lumen Efficiency: 90 - 105 lm/w
 Colour Temperature(CCT): 3000K/4000K/6500K
 Power Factor (PF): >0.95
 CRI: Ra > 80
 Light Beam Angle: 120°
 Surge Protection: 2.5 KVA
 Electronic Driver Efficiency: >85%
 Optics: Polycarbonate Diffuser
 Operating Temperature Range: -10°C to +50°C



Electronic Driver: **ankur** PHILIPS **FULHAM**

LED Chip: PHILIPS LUMILEDS OSRAM EDISON 30,000Hrs



Wattage	Lumen Output			Dimensions (L x W)mm	Product Code
	3000K	4000K	6500K		
6W	540 lm	570 lm	630 lm	105 x 105	XAL-LIVA/SPL-SQ/6W/WW
9W	810 lm	855 lm	945 lm	105 x 105	XAL-LIVA/SPL-SQ/9W/WW
12W	1080 lm	1140 lm	1260 lm	155 x 155	XAL-LIVA/SPL-SQ/12W/WW
15W	1350 lm	1425 lm	1575 lm	155 x 155	XAL-LIVA/SPL-SQ/15W/WW
18W	1620 lm	1710 lm	1890 lm	205 x 205	XAL-LIVA/SPL-SQ/18W/WW
22W	1980 lm	2090 lm	2310 lm	205 x 205	XAL-LIVA/SPL-SQ/22W/WW

Application Areas

- Shopping Malls
- Retail Stores/ Showrooms
- Hospital/ Institutions
- Residential
- Super Markets
- Corporate Offices
- Restaurants/ Hotels
- Commercial Complexes



ankur[®] LED Ambo Panel Light



BIS Approved Driver

"Aesthetically designed ultra slim edge lit recessed mounted LED panels equipped with die-cast aluminium housing having smooth powder coated finish and anti-glare UV stabilized polycarbonate diffuser allowing 95% of uniform lux spread over. In - built heat sink for better thermal management with the energy efficient electronic driver having 2.5 KVA surge protection."

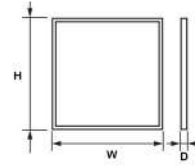


ankur
Expert LED Lights Private Limited

LED AMBO PANEL LIGHT



Input Operating Voltage: 90-300VAC / 50-60 Hz
 Minimum Lumen Efficiency: 100 - 115 lm/W
 Colour Temperature (CCT): 3000K/4000K/6500K
 Power Factor (PF): >0.95
 CRI: Ra > 80
 Light Beam Angle: 120° (optional 45° / 60° / 90°)
 Surge Protection: 2.5 Kva
 Total Harmonic Distortion (THD): <10%
 Electronic Driver Efficiency: >85%
 Optics: Polycarbonate Diffuser
 Operating Temperature Range: -20°C to +55°C



Electronic Driver: **PHILIPS** **FULHAM** **MIW**

LED Chip: **PHILIPS LUMILEDS** **OSRAM** **EDISON** **50,000Hrs**



Wattage	Lumen Output			Dimensions (H x W)mm	Product Code
	3000K	4000K	6500K		
30W	3000 lm	3150 lm	3450 lm	600 x 600	XAL-AMBO/RPL-30W/CW-WH
36W	3600 lm	3780 lm	4140 lm	600 x 600	XAL-AMBO/RPL-36W/CW-WH
42W	4200 lm	4410 lm	4830 lm	600 x 600	XAL-AMBO/RPL-42W/CW-WH
48W	4800 lm	5040 lm	5520 lm	600 x 600	XAL-AMBO/RPL-48W/CW-WH

* Also available in size 1' x 4' and hanging arrangement option.

Application Areas

- Shopping Malls
- Retail Stores/ Showrooms
- Hospitals
- Institutions
- Super Markets
- Corporate Offices
- Restaurants/ Hotels
- Commercial Complexes



ankur[®] LED Downlighter



BSI Approved Driver

Aesthetically designed Recess mounted / Surface mounted down lights with pressure die-cast aluminium housing, effective heat sink & PC diffuser in white powder coated finish with energy efficient electronic driver with 2.5 Kva surge protection driver. Deliver overall excellent illumination & comfort in high ceiling areas with no harmful UV & IR radiations.



ankur
Specialty Ankur Lights Private Limited

LED RECESSES COB DOWN LIGHTER



Input Operating Voltage: 90-300VAC / 50-60 Hz

Lumen Efficiency: 100 - 115 lm/w

Colour Temperature (CCT): 3000K/4000K/6500K

Power Factor (PF): >0.95

CRI: Ra > 80

Light Beam Angle: 24° / 36° / 45° / 60°

Surge Protection: 2.5 KVA

Electronic Driver Efficiency: >85%

Optics: Polycarbonate Diffuser

Operating Temperature Range: -10°C to +50°C

Electronic Driver: **ankur** PHILIPS FULHAM

LED Chip: PHILIPS LUMILEDS OSRAM EDISON

Available as



*d: Cut-out diameter

30,000Hrs



Wattage	Product Description	Lumen Output			Dimensions (D x H x d)mm	Product Code
		3000K	4000K	6500K		
3W	LED Cosglo Downlight	300 lm	315 lm	345 lm	90 x 45 x 75	XAL-COSGLO/DL-3W/WW
6W	LED Cosglo Downlight	600 lm	630 lm	690 lm	90 x 45 x 75	XAL-COSGLO/DL-6W/WW
9W	LED Cosglo Downlight	900 lm	945 lm	1035 lm	90 x 45 x 75	XAL-COSGLO/DL-9W/NW
15W	LED Frazor Downlight	1500 lm	1650 lm	1800 lm	90 x 55 x 70	XAL-FRAZOR/DL-15W/NW
20W	LED Frazor Downlight	2000 lm	2200 lm	2400 lm	90 x 55 x 70	XAL-FRAZOR/DL-20W/NW
30W	LED Frazor Downlight	3000 lm	3300 lm	3600 lm	90 x 55 x 70	XAL-FRAZOR/DL-30W/NW
40W	LED Frazor Downlight	4000 lm	4400 lm	4800 lm	90 x 55 x 70	XAL-FRAZOR/DL-40W/NW

Application Areas

Shopping Malls	Retail Stores/ Showrooms	Hospital/ Institutions	Residential
Super Markets	Corporate Offices	Restaurants/ Hotels	Art Galleries/ Museum



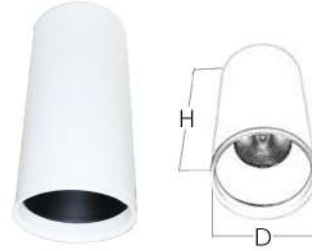


ankur
Export Ankur Lights Private Limited

LED QBEC SURFACE DOWN LIGHTER



Input Operating Voltage: 90-300VAC / 50-60 Hz
 Lumen Efficiency: 100 - 115 lm/w
 Colour Temperature(CCT): 3000K/4000K/6500K
 Power Factor (PF): >0.95
 CRI: Ra > 80
 Light Beam Angle: 30° (optional 14° / 24° / 36° / 60°)
 Surge Protection: 2.5 KVA
 Electronic Driver Efficiency: >85%
 Optics: PMMA Diffuser
 Operating Temperature Range: -10°C to +50°C



Electronic Driver: **ankur** PHILIPS FULHAM

LED Chip: PHILIPS LUMILEDS OSRAM EDISON 30,000Hrs



Wattage	Lumen Output			Dimensions (H x D)mm	Product Code
	3000K	4000K	6500K		
6W	600lm	630lm	690lm	155 x 75	XAL-QBEC/DL-RD/6W/WW
9W	900lm	945lm	1035lm	155 x 75	XAL-QBEC/DL-RD/9W/WW
12W	1200lm	1260lm	1380lm	155 x 75	XAL-QBEC/DL-RD/12W/WW
15W	1500lm	1575lm	1725lm	155 x 75	XAL-QBEC/DL-RD/15W/WW

*Available in higher wattages upto 25W and in square shape also.

Application Areas

- Shopping Malls
- Retail Stores/ Showrooms
- Hospital/ Institutions
- Residential
- Super Markets
- Corporate Offices
- Restaurants/ Hotels
- Art Galleries/ Museum



ankur[®] LED Glee Spot Light



BIS Approved Driver

Aesthetically designed recess mounted circular COB LED Spot Light with high grade die-cast aluminium housing along with powder coated finish. Equipped with specially designed heat sink, anti glare diffuser and separate energy efficient electronic driver. Available in different beam angle variants for versatile application.

Wattage	Lumen Output			Dimensions (D x H)mm	Cut Out (d)mm	Product Code
	3000K	4000K	6500K			
2W	190	200	210	45 x 20	30	XAL-GLEE/SPT-RD/2W/WW
3W	285	300	315	45 x 20	30	XAL-GLEE/SPT-RD/3W/WW
4W	380	400	420	70 x 40	52	XAL-GLEE/SPT-RD/4W/WW
6W	570	600	620	70 x 40	52	XAL-GLEE/SPT-RD/6W/WW

*Also Available in both fixed and adjustable variants.



Application Areas

- Shopping Malls
- Retail Stores/ Showrooms
- Hospital/ Institutions
- Residential
- Super Markets
- Corporate Offices
- Resturants/ Hotels
- Art Galleries/ Museum



ankur[®] LED Strip Light



BIS Approved Driver

High Lumen efficacy Flexible LED Strip Light up to 24W available to enhance the overall aesthetic effect with wide viewing angle of 120 degrees, offers IP20 and IP65 ingress protection for indoor and outdoor application respectively. Available in RGB also with remote for creating various lighting effects equipped with efficient driver.

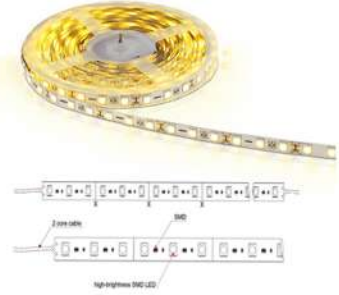


ankur
Smart LED Lights Private Limited

LED STRIP LIGHT



Input Operating Voltage: 12V / 24V
 Lumen Efficiency: 95-105 lm/w
 Colour Temperature(CCT): 3000K/4000K/6500K/ RGB
 Power Factor (PF): >0.95
 CRI: Ra > 80
 Light Beam Angle: 120°
 Surge Protection: 2.5 KVA
 Electronic Driver Efficiency: >85%
 Optics: Not Available For IP33 / For IP65 - Silica Gel
 Operating Temperature Range: -10°C to +50°C
 Electronic Driver: **PHILIPS** **FULHAM** **AW**



LED Chip: **PHILIPS LUMILEDS** **OSRAM** **EDISON**

30,000Hrs



Wattage	Product Description	Lumen Output (Per Meter)	Dimensions (L x W)mm	Product Code
24W	LED STRIP/12V	450-500	5000 x 8	XAL-STRIP/3528-24W/WW-60L
30W	LED STRIP/12V	570-630	5000 x 8	XAL-STRIP/2835-30W/NW-60L
50W	LED STRIP/12V	950-1050	5000 x 8	XAL-STRIP/2835-50W/NW-120L
75W	LED STRIP/12V	1425-1575	5000 x 8	XAL-STRIP/2835-75W/NW-120L
36W	LED STRIP/24V	690-750	5000 x 10	XAL-STRIP/5050-36W/NW-30L
75W	LED STRIP/24V	1425-1575	5000 x 10	XAL-STRIP/5050-75W/NW-60L

*36W/ 75W in 5050 LED strip are available with 24V / IP65 / RGB. (Price on request)

*6W 120L/ 9W 180L Tunable IP20 LED strips are available with 2835 chip/ 12V.(Price on request)

Application Areas

Advertisement Box	Retail Stores/ Showrooms	Hotels	Residential
Super Markets	Party Lawns	Restaurants	Commercial Complexes



ankur[®] LED Track Light



BIS Approved Driver

The new line of modern-styled track lighting solutions delivers a controlled, powerful, and clean beam of light on high-end retail, gallery exhibits, from just about any mounting height without a visible heat sink or venting as part of its fire retardant modest high grade alluminium casing with energy efficient electronic driver with 2.5 Kva surge protection.



ankur
Specialty Ankur Lights Private Limited

LED ZEXX TRACK LIGHT



Input Operating Voltage: 90-300VAC / 50-60 Hz

Lumen Efficiency: 105 - 120 lm/w

Colour Temperature (CCT): 3000K/4000K/6500K

Power Factor (PF): >0.95

CRI: Ra > 90

Light Beam Angle: 15° / 24° / 38° / 60°

Surge Protection: 2.5 KVA

Electronic Driver Efficiency: >85%

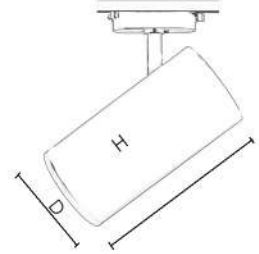
Optics: Clear Glass




Operating Temperature Range: -10°C to +50°C

Electronic Driver: **PHILIPS** **FULHAM** **MW**

LED Chip: **PHILIPS LUMILEDS** **OSRAM** **EDISON**

30,000Hrs



Available colours:   



Wattage	Lumen Output			Dimensions (D x H)mm	Product Code
	3000K	4000K	6500K		
10W	1050 lm	1100 lm	1200 lm	60 x 180	XAL-ZEXX/TL-10W/NW
15W	1575 lm	1650 lm	1800 lm	75 x 165	XAL-ZEXX/TL-15W/NW
20W	2100 lm	2200 lm	2400 lm	75 x 165	XAL-ZEXX/TL-20W/NW
30W	3150 lm	3300 lm	3600 lm	75 x 180	XAL-ZEXX/TL-30W/NW
40W	4200 lm	4400 lm	4800 lm	90 x 170	XAL-ZEXX/TL-40W/NW

Application Areas

Art Galleries	Retail Stores	Jewellery shops	Showrooms
Museums	Exhibitions	Restaurants/ Hotels	Commercial Complexes





ankur
Specialty Ankur Lights Private Limited

LED ZINGO TRACK LIGHT



Input Operating Voltage: 90-300VAC / 50-60 Hz

Lumen Efficiency: 105 -120 lm/w

Colour Temperature(CCT): 3000K/4000K/6500K

Power Factor (PF): >0.95

CRI: Ra >90

Light Beam Angle: 14°/ 24°/ 36°/ 60°

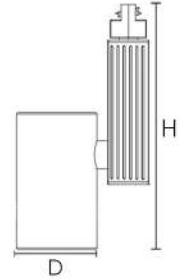
Surge Protection: 2.5 KVA

Electronic Driver Efficiency: >85%

Optics: Clear Glass

Operating Temperature Range: -10°C to +50°C

Electronic Driver: **PHILIPS** **FULHAM** **MW**



LED Chip: **PHILIPS LUMILEDS** **OSRAM** **EDISON**

30,000Hrs

Available colours:



Wattage	Lumen Output			Dimensions (D x H)mm	Product Code
	3000K	4000K	6500K		
15W	1575 lm	1650 lm	1800 lm	88 x 136	XAL-ZINGO/TL-15W/WW
20W	2100 lm	2200 lm	2400 lm	88 x 136	XAL-ZINGO/TL-20W/WW
30W	3150 lm	3300 lm	3600 lm	88 x 136	XAL-ZINGO/TL-30W/WW
35W	3675 lm	3850 lm	4200 lm	88 x 145	XAL-ZINGO/TL-35W/WW
40W	4200 lm	4400 lm	4800 lm	88 x 145	XAL-ZINGO/TL-40W/WW

Application Areas

- Art Galleries
- Retail Stores
- Jewellery shops
- Showrooms
- Museums
- Exhibitions
- Restaurants/ Hotels
- Commercial Complexes





ankur
Export Ankur Lights Private Limited

LED ZOXX TRACK LIGHT



Input Operating Voltage: 90-300VAC / 50-60 Hz

Lumen Efficiency: 95 - 120 lm/w

Colour Temperature (CCT): 3000K/4000K/6500K

Power Factor (PF): >0.95

CRI: Ra > 90

Light Beam Angle: 14° / 24° / 36°

Surge Protection: 2.5 KVA

Electronic Driver Efficiency: >85%




Optics: Clear Glass

Operating Temperature Range: -10°C to +50°C

Electronic Driver: **PHILIPS** **FULHAM** **AMW**



LED Chip: **PHILIPS LUMILEDS** **OSRAM** **EDISON** **30,000Hrs**

Available colours:   



Wattage	Lumen Output			Dimensions (D x H)mm	Product Code
	3000K	4000K	6500K		
6W	570 lm	600 lm	720 lm	57 x 119	XAL-ZOXX/TL-6W/WW
9W	855 lm	900 lm	1080 lm	57 x 119	XAL-ZOXX/TL-9W/WW
12W	1140 lm	1200 lm	1440 lm	57 x 152	XAL-ZOXX/TL-12W/WW
15W	1425 lm	1500 lm	1800 lm	57 x 152	XAL-ZOXX/TL-15W/WW

Application Areas

Art Galleries	Retail Stores	Jewellery shops	Showrooms
Museums	Exhibitions	Restaurants/ Hotels	Commercial Complexes





Single phase track



XAL-TRK/1P-1M/WH
XAL-TRK/1P-2M/WH
L:1M/2M
Colors:



Three phase track



XAL-TRK/3P-1M/WH
XAL-TRK/3P-2M/WH
L: 1M/2M
Colors:



Suspension kit



XAL-SSPN-KIT (Includes)

- CLUTCH WIRE WITH PUSH SYSTEM.
- TRACK SLIDER.
- JO9 BASE.

Colors:

Three phase recessed track



XAL-TRK/R/3P-1M/WH
XAL-TRK/R/3P-2M/WH
L: 1M/2M
Colors:-



Track Accessories

STRAIGHT CONNECTOR	STRAIGHT CONNECTOR	L- CONNECTOR	JACK
 XAL - CNT/ST/1P-WH	 XAL - CNT/ST/3P-BK	 XAL- CNT/L/3P-WH	 XAL- JACK/1P-WH
 XAL - CNT/T/3P-BK	 XAL - CNT/4-WAY/3P-WH	 XAL - CNT/FLX/3P-BK	 XAL- JACK/3P-WH
T - CONNECTOR	4-WAY CONNECTOR	FLEXIBLE CONNECTOR	JACK

ankur® LED Glitz Wall Washer



BIS Approved Driver

LED Wall Washer offers a optimum guided luminous efficacy, best suited for the various light highlighting themes, equipped with the high grade Aluminium pressure die-cast housing with the efficient heat sink for thermal and Aluminium coated non glare reflector with the beam angle options to suit the different lighting needs.



Wattage per meter	lumen Output per meter	Product Code
12W	1200-1440	XAL-GLITZ/WW-12W/RGB-IP65
24W	2400-2880	XAL-GLITZ/WW-24W/RGB-IP65
36W	3600-4320	XAL-GLITZ/WW-36W/RGB-IP65

Input Operating Voltage: 100-300VAC / 24V
 Lumen Efficiency: 100 -120 lm/w
 Colour Temperature (CCT): 3000K/4000K/6500K/RGB
 Power Factor (PF): >0.95
 CRI: Ra > 80
 Light Beam Angle: 14°/24°/ 36°/ 90°
 Surge Protection: 5 Kva
 Electronic Driver Efficiency: >85%
 Optics: Glass Diffuser
 Operating Temperature Range: -20°C to +55°C
 Available in 0.5 to 8 ft lengths as per requirement

Application Areas

- Shopping Malls
- Banquets / Party Lawn
- Monuments
- Statues
- Museum
- Prestigious Buildings
- Restaurants/ Hotels
- Art Galleries



ankur[®] LED Vivi Up down Light



BIS Approved Driver

"Surface mounted aesthetically designed LED Up Down light with high grade die-cast aluminium housing having smooth powder coated finish offers various lighting patterns through beam angle variants. Equipped with the IP65 protection option, suitable for outdoor wall mounting application, having in-built heat sink for better thermal management.



ankur
Year12 Ankur Lights Private Limited

LED VIVI UP DOWN LIGHT



Input Operating Voltage: 90-300VAC / 50-60 Hz
 Lumen Efficiency: 100 - 115 lm/W
 Colour Temperature(CCT): 3000K/4000K/6500K
 Power Factor (PF): >0.95
 CRI: Ra > 80
 Light Beam Angle: 12°/18°/24°/36°/45°/60°
 Surge Protection: 2.5 / 5.0 KVA
 Electronic Driver Efficiency: >85%
 Optics: Clear Glass
 Operating Temperature Range: -10°C to +50°C



Electronic Driver: **ankur** PHILIPS FULHAM

LED Chip: PHILIPS LUMILEDS OSRAM EDISON 30,000Hrs



Wattage (W)	Lumen Output			Dimensions (D x H)mm	Product Code
	3000K	4000K	6500K		
2X3	200 lm	210 lm	230 lm	63 x 205	XAL-VIVI/UDL-RD/2x3W/NW
2X4	300 lm	315 lm	345 lm	63 x 205	XAL-VIVI/UDL-RD/2x4W/NW
2X5	400 lm	410 lm	430 lm	63 x 205	XAL-VIVI/UDL-RD/2x5W/NW
2X6	500 lm	525 lm	575 lm	63 x 205	XAL-VIVI/UDL-RD/2x6W/NW
2X7	600 lm	630 lm	690 lm	63 x 205	XAL-VIVI/UDL-RD/2x7W/NW
2X9	700 lm	735 lm	805 lm	63 x 205	XAL-VIVI/UDL-RD/2x9W/NW

* Also available in cubical shapes/1 way, 3 way and 4 way lighting patterns.

Application Areas

- Shopping Malls
- Reception areas/Lobbies
- Stairways
- Facade
- Corridors
- Corporate Offices
- Restaurants/ Hotels
- Residential



ankur[®] LED Lumi Spike Light



BIS Approved Driver

Specially crafted Stylish, Robust, Reliable Spike light equipped with Die-cast Aluminium housing, offers uniform light distribution with IP65 protection suitable to provide accent lighting for variety of outdoor application. In built heat sink for better thermal management with the energy efficient electronic driver having 5 KVA surge protection.



ankur
Specialty Ankur Lights Private Limited

LED LUMI SPIKE LIGHT



Input Operating Voltage: 90-300VAC / 50-60 Hz

Lumen Efficiency: 100 - 115 lm/w

Colour Temperature(CCT): 3000K/4000K/6500K

Power Factor (PF): >0.95

CRI: Ra >70

Light Beam Angle: 18°/24°/30°/36°/42°/50°

Surge Protection: 5 KVA

Electronic Driver Efficiency: >85%

Optics: PMMA Diffuser

Operating Temperature Range: -20°C to +55°C

Electronic Driver: **ankur PHILIPS FULHAM**

LED Chip: **PHILIPS LUMILEDS OSRAM EDISON CREE**

30,000Hrs



Wattage	Lumen Output			Dimensions (D x L)mm	Product Code
	3000K	4000K	6500K		
5W	500 lm	525 lm	575 lm	79 x 175	XAL-LUMI/SPK-5W/NW-IP65
6W	600 lm	630 lm	690 lm	79 x 175	XAL-LUMI/SPK-6W/NW-IP65
7W	700 lm	735 lm	805 lm	79 x 175	XAL-LUMI/SPK-7W/NW-IP65
9W	900 lm	945 lm	1035 lm	79 x 175	XAL-LUMI/SPK-9W/NW-IP65
12W	1200 lm	1260 lm	1380 lm	79 x 175	XAL-LUMI/SPK-12W/NW-IP65
15W	1500 lm	1575 lm	1725 lm	105 x 210	XAL-LUMI/SPK-15W/NW-IP65

Application Areas

- Landscapes
- Lighting of trees and bushes
- Monuments And Statues
- Commercial decoration
- Flower beds
- Garden pathways
- Lawns



ankur[®] LED Aura Burial Light



BIS Approved Driver

Sustainable Stylish, Aesthetic and Robust designs keeping in view the global warming considerations, with high grade aluminum housing offers uniform effective light distribution, having narrow beam angle variants along with the efficient thermal dissipation. Equipped with IP65/ IP66 safety features to avoid any short circuit due to water pilferage.



ankur
Specialty Ankur Lights Private Limited

LED AURA BURIAL LIGHT



Input Operating Voltage: 100-300V AC
 Lumen Efficiency: 95 - 115 lm/W
 Colour Temperature(CCT): 3000K/4000K/6500K
 Power Factor (PF): >0.95
 CRI: Ra > 80
 Light Beam Angle: 15°/18°/24°/30°/48°/60°
 Surge Protection: 5 KVA
 Electronic Driver Efficiency: >85%
 Optics: Glass / PMMA Diffuser
 Operating Temperature Range: -20°C to +55°C
 Humidity Working Range: 0 to 95%
 Total Harmonic Distortion (THD) <10%



Electronic Driver: **PHILIPS** **FULHAM** **MW**

LED Chip: **PHILIPS LUMILEDS** **OSRAM** **EDISON** **50,000Hrs**



Wattage	Lumen Output			Dimensions (D x H)mm	Product Code
	3000k	4000K	6500k		
2W	285lm	315lm	345lm	78 x 65	XAL-AURA/BRL-2W/WW-BL
6W	570lm	630lm	1035lm	78 x 65	XAL-AURA/BRL-6W/WW-BL
9W	855lm	945lm	1035lm	80 x 140	XAL-AURA/BRL-9W/WW-BL
12W	1140lm	1260lm	1380lm	80 x 140	XAL-AURA/BRL-12W/WW-BL
18W	1710lm	1890lm	2070lm	80 x 140	XAL-AURA/BRL-18W/WW-BL
25W	2375lm	2625lm	2875lm	125 x 130	XAL-AURA/BRL-25W/WW-BL
30W	2850lm	3150lm	3450lm	125 x 130	XAL-AURA/BRL-25W/WW-BL

Application Areas

- Landscapes
- Lighting of trees and bushes
- Monuments And Statues
- Commercial decoration
- Flower beds
- Garden pathways
- Lawns



ankur[®] LED Luxo High Bay



BIS Approved Driver

Aesthetically designed & robust LED Highbay with high lumen efficacy equipped with specially designed heat sink for better thermal management and energy efficient electronic driver with 5 KVA surge protection to meet the different requirement across industrial application. Providing a highly productive and safe environmental lighting to increase work efficiency.

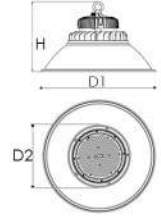


ankur
Export Ankur Lights Private Limited

LED LUXO HIGH BAY



Input Operating Voltage: 90-300VAC / 50-60 Hz
 Lumen Efficiency: 100 - 115 lm/w
 Colour Temperature (CCT): 3000K/4000K/6500K
 Power Factor (PF): >0.95
 CRI: Ra > 80
 Light Beam Angle: 120° (optional 45° / 60° / 90°)
 Surge Protection: 5 Kva
 Total Harmonic Distortion (THD): <10%
 Electronic Driver Efficiency: >85%
 Optics: Polycarbonate Diffuser
 Operating Temperature Range: -20°C to +55°C



Electronic Driver: **PHILIPS** **FULHAM** **MW** (MEAN WELL)

LED Chip: **PHILIPS LUMILEDS** **OSRAM** **EDISON** **50,000Hrs**



Wattage	Lumen Output			Dimensions (D1 x H / D2)mm	Product Code
	3000K	4000K	6500K		
50W	5000 lm	5500 lm	5750 lm	490 x 385 / 300	XAL-LUXO/HB-50W/CW
100W	10000 lm	11000 lm	11500 lm	490 x 385 / 300	XAL-LUXO/HB-100W/CW
150W	15000 lm	16500 lm	17250 lm	585 x 350 / 280	XAL-LUXO/HB-150W/CW
200W	20000 lm	22000 lm	23000 lm	585 x 350 / 280	XAL-LUXO/HB-200W/CW

Application Areas

- Facades
- Roadways
- Stadium
- Warehouse
- Airport
- Chemical industry
- Ship Yard
- Construction site



ankur[®] LED Street Light



BIS Approved Driver

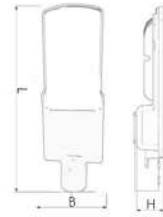
Ergonomically designed high powered LED Street Light equipped with poly-carbonate IP Lens diffuser. Specially designed powder coated aluminium die-cast housing with bigger fins for the efficient thermal management and energy efficient electronic driver with 10KVA Surge protection device.



ankur LED STREET LIGHT



Input Operating Voltage: 100-300V AC
 Lumen Efficiency: 100 - 110 lm/w
 Colour Temperature(CCT): 4000K/6500K
 Power Factor (PF): >0.95
 CRI: Ra > 70
 Light Beam Angle: 120° / 85° / 60°
 Surge Protection: 10 KVA
 Electronic Driver Efficiency: >85%
 Optics: Poly carbonate Diffuser
 Operating Temperature Range: -20°C to +55°C
 Humidity Working Range: 0 to 95%
 Total Harmonic Distortion (THD) <10%



Electronic Driver: **PHILIPS** **FULHAM** **MW** **50,000Hrs**

LED Chip: **PHILIPS LUMILEDS** **OSRAM** **EDISON**



Wattage	Product Description	Lumen Output		Dimensions (L x B x H)mm	Product Code
		4000k	6500K		
15W	Elite - PC Plain Lens	1500 lm	1650 lm	200 x 118 x 45	XAL-ELITE/SL-15W/CW
25W	Elite - PC Plain Lens	2500 lm	2750 lm	266 x 100 x 65	XAL-ELITE/SL-25W/CW
35W	Elite - PC Plain Lens	3500 lm	3850 lm	229 x 100 x 68	XAL-ELITE/SL-35W/CW
45W	Elite - PC Plain Lens	4500 lm	4950 lm	229 x 100 x 68	XAL-ELITE/SL-45W/CW
60W	Pro - PC IP Lens	6000 lm	6600 lm	350 x 100 x 65	XAL-PRO/SL-60W/CW
90W	Pro - PC IP Lens	9000 lm	9900 lm	300 x 184 x 65	XAL-PRO/SL-90W/CW
120W	Pro - PC IP Lens	12000 lm	13200 lm	480 x 230 x 93	XAL-PRO/SL-120W/CW

* Elite series - 2835 chip / Pro series - 3535 chip / available in higher wattages maximum upto 240 watts.

Application Areas

- Residential Colonies
- Peripheral Roads
- Arterial Roads
- Boundary Walls
- Road lights
- Highways
- Compound Areas
- City Main Roads



ankur[®] LED Turbo Flood Light



BIS Approved Driver

Ergonomically designed high powered LED Flood Light equipped with especially designed heat sink, having powder coated aluminium die-cast housing with energy efficient electronic driver with 10KVA Surge protection device. Available in Back Choke as well as Front choke housing design with 120°/ 60°/ 45°/ 30° angles to suit various heights.



ankur
Export Ankur Lights Private Limited

LED TURBO FLOOD LIGHT



Input Operating Voltage: AC 100-300V, 50/60 Hz

Lumen Efficiency: 100 - 110 lm/w

Colour Temperature(CCT): 4000K/6500K

Power Factor (PF): >0.95

CRI: Ra > 70

Light Beam Angle: 120° / 90° / 60° / 45° / 30°

Surge Protection: 10 Kva

Electronic Driver Efficiency: >85%

Optics: Glass

Total Harmonic Distortion (THD): <10%

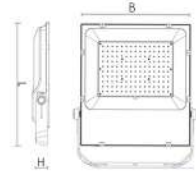
Operating Temperature Range: -20°C to +55°C

Electronic Driver: **PHILIPS FULHAM**



50,000Hrs

LED Chip: **PHILIPS LUMILEDS OSRAM EDISON**



Wattage	Lumen Output		Dimensions (L x B x H)mm	Product Code
	4000k	6500K		
30W	3000 lm	3450 lm	217 x 199 x 56	XAL-TURBO/FL-30W/CW
50W	5000 lm	5750 lm	217 x 199 x 56	XAL-TURBO/FL-50W/CW
100W	10000 lm	11500 lm	281 x 388 x 56	XAL-TURBO/FL-100W/CW
150W	15000 lm	17250 lm	281 x 388 x 56	XAL-TURBO/FL-150W/CW
200W	20000 lm	24000 lm	350 x 670 x 56	XAL-TURBO/FL-200W/CW
300W	30000 lm	36000 lm	350 x 670 x 56	XAL-TURBO/FL-300W/CW

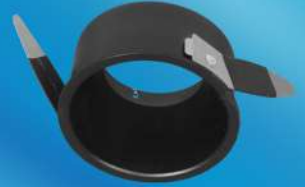
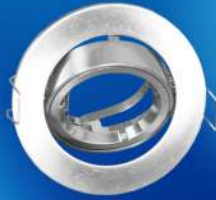
* Available with 2835 / 3030 / 3535 / 5050 LED chip variant with IP lens option also.

Application Areas

- Compound Areas
- Building & Monuments
- Assembly Areas
- Play Grounds
- Facade lighting
- Warehouse Areas
- Tunnels
- Refineries & Power Plants



ankur® Module Lamp Casing



BIS Approved Driver

Aesthetically designed MR 16 recessed casing made up from high grade pressure die-cast Aluminium for GU10 / ZR Module / Speedo module. Available in Round and Square design with the option of swivel adjusting angle of $\pm 20^\circ$.

Product Description	Dimensions [L / D x H]mm	Product Code
H-70 Casing	100 x 70	XAL-CASE/H70-RD/100-WH
H-45 Casing	115 x 70	XAL-CASE/H45-SQ/115-BL
3D Casing	95 x 25	XAL-CASE3D/H25-RD/95-WH
Baffle (Tilttable)	85 x 45	XAL-CASE/BFL/T-RD/85-BL
Baffle (Fixed)	80 x 45	XAL-CASE/BFL/F-RD/80-BL
Fab Casing (Tilttable)	95 x 45	XAL-CASE/FAB/T-RD/95-WH

IK 07



Application Areas

- Shopping Malls
- Retail Stores/ Showrooms
- Hospital/ Institutions
- Residential
- Super Markets
- Corporate Offices
- Restaurants/ Hotels
- Art Galleries/ Museum



Euro Series powered by **Cree** with dimmable driver



Edison LED Filament Lamp



*Euro series / LED Filament lamp pricing and technical specifications are on request.



Wall Light



4608



4608



4609



2086



38230



32007



4611



LPG-027



4604



0379

Bollard



010S



0537



001B



0546



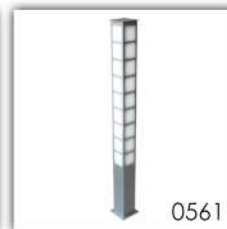
017T



0566



0556



0561



0565



0552

* Above product line price and technical specifications are on request.

Hanging



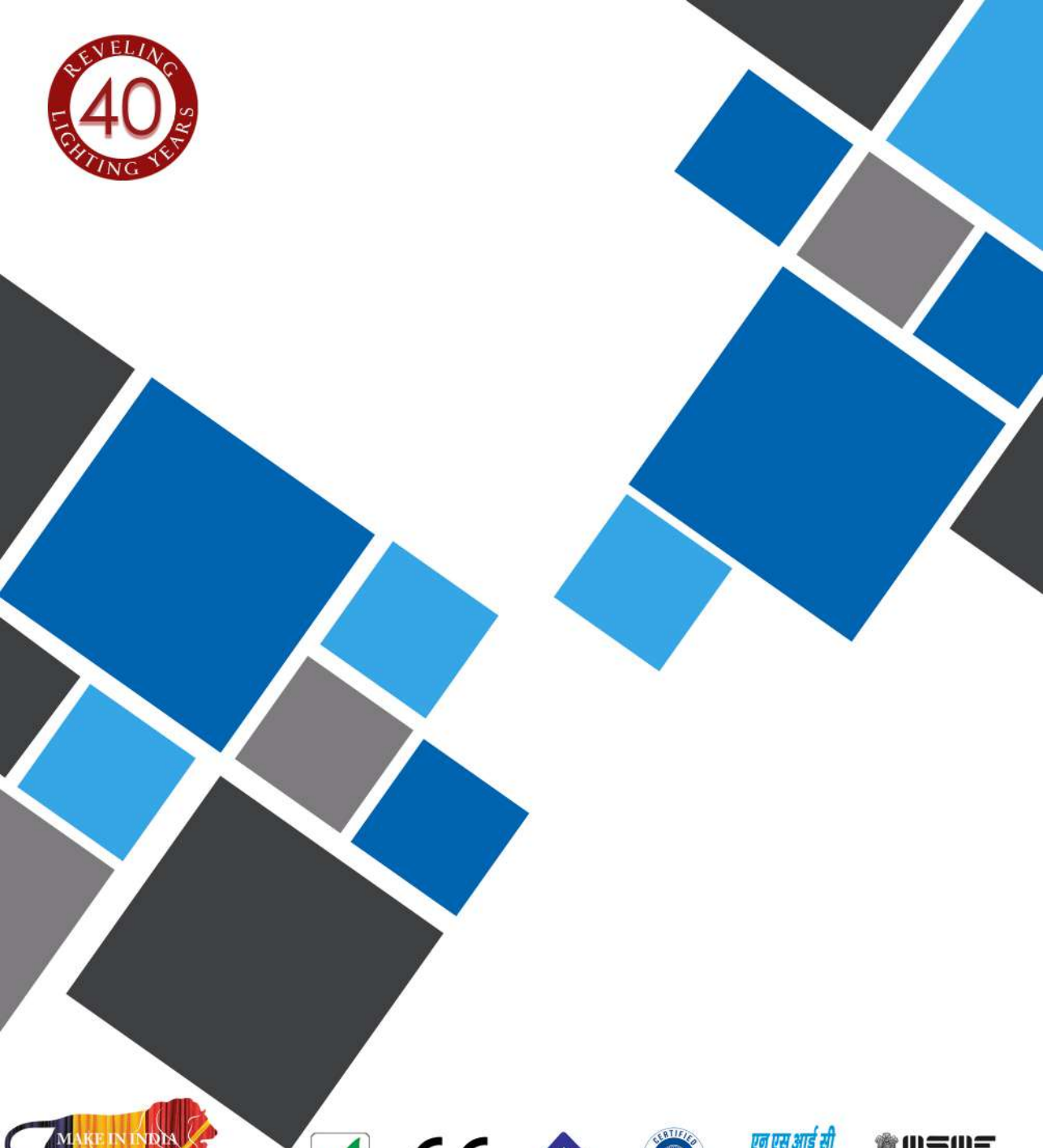
Step Light



Vintage



*Above product line price and technical specifications are on request.



ankur
XpertZ Ankur lights Private Limited

f /AnkurLights

📷 /AnkurLighting

t AnkurLighting



Delhi - Khan Market | East of Kailash | Gagan Vihar | Tel +91-11-47220000/47270000
www.ankurlighting.com | sales@ankurlighting.com | aftersales@ankurlighting.com