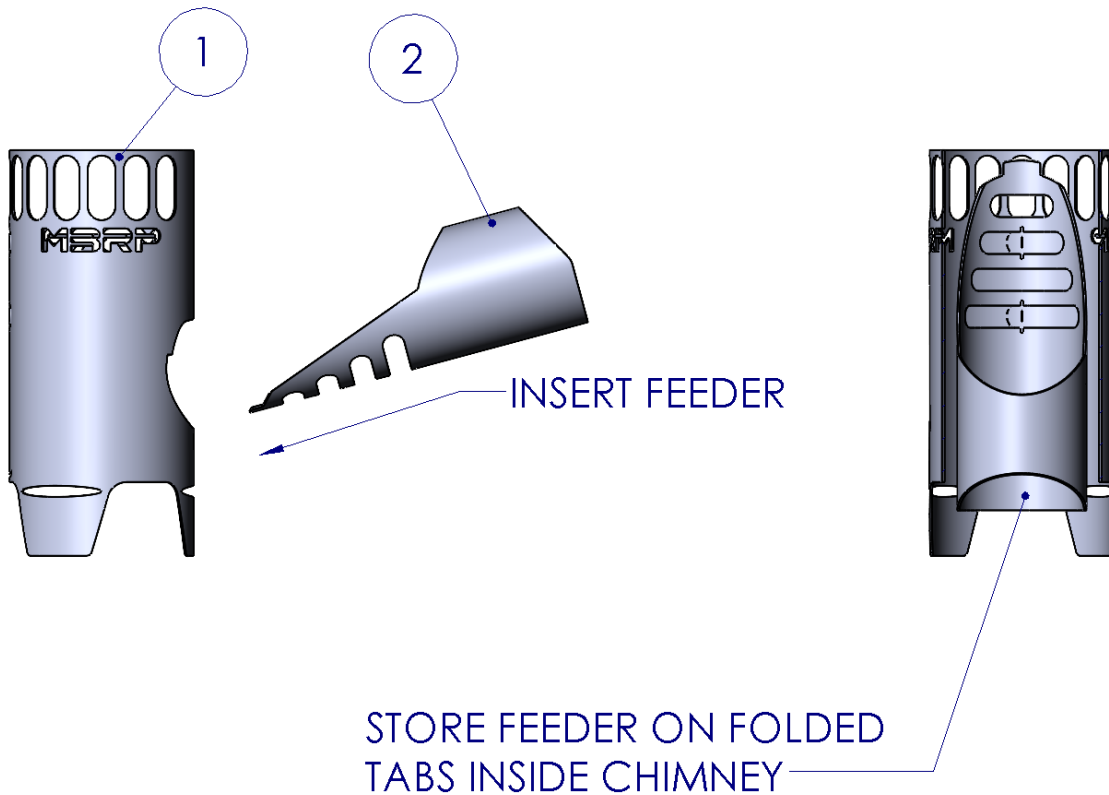


A115188
5" ROCKET STOVE KIT

MBRP®



ITEM	DESCRIPTION	QTY
1	CHIMNEY	1
2	FEEDER	1

Refer to this LOT NUMBER when contacting customer service: _____

PLEASE READ BEFORE STARTING INSTALLATION

While MBRP has made every effort to ensure that all components of this kit are of superior quality and properly packaged, it is the installer's responsibility to ensure the following:

- that ALL components shown above are present.
- that ALL mating components fit together.
- that there are no damaged components.
- that you have read and understand these instructions.

MBRP®

Rocket Stove Assembly

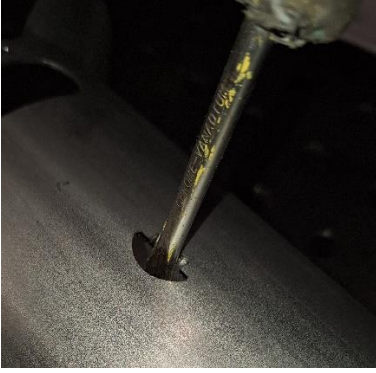


Figure 1



Figure 2



Figure 3



Figure 4

1. Push both mounting tabs into **Chimney** from the outside using a screwdriver or similar tool.

Refer to Figure 1.

2. Finish folding both tabs in to be 90 degrees with inside surface of **Chimney**.

Refer to Figure 2.

3. bend each leg outward using an adjustable wrench until the gap in the slot is completely closed.

Refer to Figure 3.

4. Insert the Feeder into the Chimney and align the tab into the slot.

Refer to Figure 4.