

# Corning® Brand Equipment Product Selection Guide



# Equipment



Corning® Cell Counter .....	2
<b>Liquid Handling Equipment</b> .....	3
Corning Lambda™ EliteTouch™ Single-channel, 8-channel, and 12-channel Pipettors, and Accessories .....	3
Corning Lambda EliteTouch Starter Kit .....	3
Corning Lambda Plus Single-channel, 8-channel, and 12-channel Pipettors and Accessories .....	4
Corning Lambda Plus Starter Kit .....	4
Costar® 8-Pette® and 12-Pette Multi-channel Pipettors .....	5
Corning Stripettor™ Ultra Pipet Controller and Accessories .....	5
Corning Aspirator Device and Accessories .....	5
Transtar®-96 Liquid Transfer System .....	5
Costar Reagent Reservoirs .....	5
Corning Step-R™ Repeating Pipettor and Syringe Tips .....	6
Corning Step-R Starter Pack .....	6
<b>Centrifugation Equipment</b> .....	7
Corning LSE™ Mini Microcentrifuge and Accessories .....	7
Corning LSE High Speed Microcentrifuge and Accessories .....	8
Corning LSE Compact Centrifuge, Rotors, and Adapters .....	9
<b>Agitation Equipment</b> .....	10
Corning LSE Vortex Mixer and Accessories .....	10
Corning LSE Digital Microplate Shaker .....	10
Corning LSE Low Speed Orbital Shaker .....	11
Corning LSE Orbital Shaker and Accessories .....	11
Corning LSE Platform Rocker .....	12
Corning LSE Digital Vortexer .....	12
<b>Constant Temperature Equipment</b> .....	13
Corning LSE Benchtop Shaking Incubator .....	13
Corning LSE 49L Shaking Incubator .....	13
Corning LSE 71L Shaking Incubator .....	14
Corning LSE 6 Liter Digital Water Bath .....	15
Corning LSE Digital Dry Bath Heater .....	15
Corning LSE Digital Dry Bath Heater Accessories .....	16
Corning Digital Hot Plates, Stirrers, and Stirring Hot Plates .....	17
Corning Analog Hot Plates, Stirring Hot Plates, and Stirrers .....	18
Stir Bars and Stir Bar Retriever .....	20
Temperature Controller and Accessories .....	20
<b>Index</b> .....	21

## Product Ordering Information

For information on Purchasing Options, Terms and Conditions of Sale, Return and Repair Policies, and Warranty/Guarantee Registration, visit our website at [www.corning.com/how-to-buy](http://www.corning.com/how-to-buy).

# Corning® Cell Counter



The new Corning Cell Counter is the first automated cell counter that combines the best of both worlds and is:

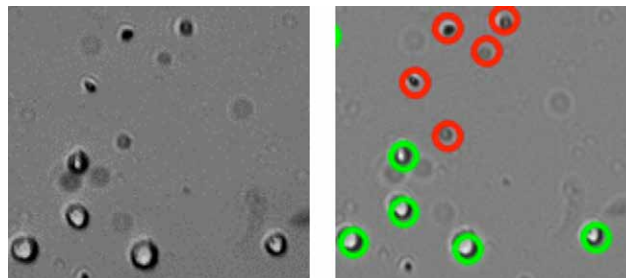
- ▶ Fast – thanks to its online image processing
- ▶ Accurate – thanks to its cloud-based machine learning algorithm.
- ▶ Low-cost – works with common reusable glass hemocytometer. No consumables required.

## Specifications

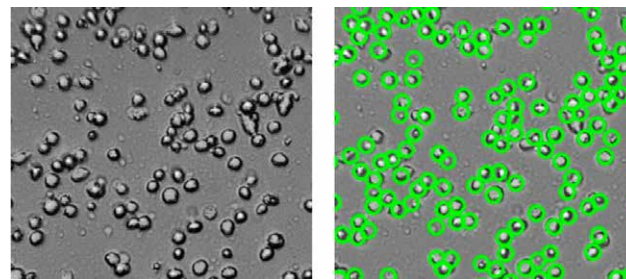
Counting range	5 x 10 <sup>4</sup> to 1.0 x 10 <sup>7</sup> cells/mL
Counting range	4 to 70 µm
Measurement time	<3 sec.*
Compatibility	Reusable and disposable counting chambers
Sample volume	10 µL
Weight	1.0 kg
Field of view	Selectable 1.96 mm <sup>2</sup> or 3 mm <sup>2</sup>
Magnification	200X
Image resolution	2048 x 1536
Exported formats	PNG
Light source	LED
Camera	5 MP CMOS
Unit dimensions	122 x 122 x 125 mm (L x W x H)
Operating environment	5°C to 40°C, 20% to 95% humidity

\*Measured using a 73 Mbps download speed and a 20 Mbps upload speed. Actual speed can vary depending on the internet connection.

Cat. No.	Description	Qty/Cs
6749	Corning Cell Counter	1
480200	Counting Chamber	1



**Figure 1.** Dead cells stained with Trypan blue are detected by the image analysis algorithm. Red circles represent dead cells, green circles represent live cells.



**Figure 2.** The image analysis algorithm is able to detect clusters of cells. Red circles represent dead cells, green circles represent live cells.

### Three-second Cell Counts

The Corning Cell Counter uses cloud-based image processing to perform a single cell count in less than three seconds. This is much faster than most automated cell-counting systems.

### Higher Accuracy

The Corning Cell Counter uses a state-of-the-art image analysis software to ensure optimal accuracy. Trypan Blue can be added (Figure 1) to detect cell viability. The Corning Cell Counter can also detect clusters of cells, which leads to accurate cell counts of “highly concentrated samples” (up to 1 x 10<sup>7</sup> cells/mL; Figure 2).

### Low Cost

The Cell Counter uses a reusable glass counting chamber, enabling automated cell counting without the cost of disposable slides.

# Liquid Handling Equipment



## Corning® Lambda™ EliteTouch™ Single-channel, 8-channel, and 12-channel Pipettors

- ▶ Ergonomic handle design is a perfect fit for both the right and left hand
- ▶ Convenient one-hand volume setting with auto-lock system prevents accidental volume change during work
- ▶ 4-digit counter provides greater precision and is perfectly positioned for visibility at all times
- ▶ Single-channel pipettors are compatible with very narrow tubes
- ▶ Fully autoclavable and UV-resistant for sample protection against contaminations
- ▶ The multi-channel shafts retract individually for perfect tip loading and easier tip ejection
- ▶ Unique ejector lever system enables effortless tip ejection
- ▶ Easy in-lab calibration helps you quickly adjust your pipettor to various liquid types
- ▶ Individually tested and supplied with a certificate of quality
- ▶ Additional colored pushbuttons (included) enable easy size identification and reduce the risk of cross-contamination.
- ▶ 3-year warranty

### Corning Lambda EliteTouch Pipettors

#### Single-channel

Cat. No.	Volume Range (µL)	Accuracy (%)	Precision (%)	Non-filtered Tip (µL)	Qty/Cs
6050	0.1 - 2	±40.0 to ±1.5	≤12.0 to ≤0.7	10	1
6051	0.5 - 10	±4.0 to ±1.0	≤2.8 to ≤0.4	10	1
6052	2 - 20	±3.5 to ±0.8	≤1.5 to ≤0.3	200	1
6053	5 - 50	±3.5 to ±0.8	≤1.3 to ≤0.3	200	1
6054	10 - 100	±3.0 to ±0.8	≤1.0 to ≤0.2	200	1
6055	20 - 200	±2.0 to ±0.6	≤0.7 to ≤0.2	200	1
6056	100 - 1,000	±2.5 to ±0.6	≤0.6 to ≤0.2	1,000	1

#### 8-channel

6057	0.5 - 10	±10.0 to ±2.0	≤8.0 to ≤1.2	10	1
6058	5 - 50	±4.0 to ±1.6	≤2.5 to ≤0.6	200	1
6059	20 - 200	±3.0 to ±1.0	≤1.5 to ≤0.6	200/300	1
6060	30 - 300	±3.0 to ±1.0	≤1.5 to ≤0.6	300	1

#### 12-channel

6061	0.5 - 10	±10.0 to ±2.0	≤8.0 to ≤1.2	10	1
6062	5 - 50	±4.0 to ±1.6	≤2.5 to ≤0.6	200	1
6063	20 - 200	±3.0 to ±1.0	≤1.5 to ≤0.6	200/300	1
6064	30 - 300	±3.0 to ±1.0	≤1.5 to ≤0.6	300	1

### Corning Lambda EliteTouch Starter Kit

Cat. No.	Description	Qty/Cs
6065	Corning Lambda EliteTouch Starter Kit Includes: 4 single-channel pipettors: 0.5 to 10 µL (Cat. No. 6051), 2 to 20 µL (Cat. No. 6052), 20 to 200 µL (Cat. No. 6055), 100 to 1000 µL (Cat. No. 6056); universal linear stand for four single-channel pipettors (Cat. No. 6066); Corning DeckWorks pipet tips: 10 µL (Cat. No. 4135), 200 µL (Cat. No. 4138), 1000 µL (Cat. No. 4140); 3 colored pushbuttons (4 sets)	1

#### Accessories

Cat. No.	Description	Qty/Cs
4088	Pipettor stand for one single-channel, 8-channel, or 12-channel pipettor	1
6066	Universal linear stand for four pipettors, orange (four single-channel, maximum of two 8-channel or 12-channel pipettors)	1
6067	Universal linear stand for four pipettors, transparent (four single-channel, maximum of two 8-channel or 12-channel pipettors)	1
6068	Universal linear stand for six pipettors, transparent (six single-channel, maximum of three 8-channel or 12-channel pipettors)	1





Corning Lambda Plus single-channel pipettor



Corning Lambda Plus 8-channel and 12-channel pipettor



## Corning® Lambda™ Plus Single-channel, 8-channel, and 12-channel Pipettors

- ▶ Low pipetting forces
- ▶ Volume lock prevents accidental change
- ▶ Fully autoclavable and UV-resistant
- ▶ Designed for universal fit with many common brands of pipet tips
- ▶ Adjustable tip ejector
- ▶ Factory calibrated to strict ISO 8655 standards
- ▶ 3-year warranty

### Single-channel

Cat. No.	Volume Range (µL)	Accuracy (%)	Precision (%)	Non-filtered Tip (µL)*	Qty/Cs
4070	0.1 - 2	±4.0 to ±1.5	≤12 to ≤0.7	10	1
4071	0.5 - 10	±4.0 to ±0.5	≤2.8 to ≤0.4	10	1
4072	2 - 20	±3.0 to ±0.8	≤1.5 to ≤0.3	200	1
4073	10 - 100	±1.6 to ±0.8	≤0.8 to ≤0.2	200	1
4074	20 - 200	±1.2 to ±0.6	≤0.6 to ≤0.02	200	1
4075	100 - 1,000	±1.6 to ±0.6	≤0.40 to ≤0.15	1,000	1

### 8-channel

4080	1 - 10	±8.0 to ±2.0	≤6.0 to ≤1.2	10	1
4081	5 - 50	±4.0 to ±1.6	≤2.5 to ≤0.6	200	1
4082	20 - 200	±3.0 to ±1.0	≤1.5 to ≤0.6	200/300	1
4083	50 - 300	±1.6 to ±1.0	≤1.5 to ≤0.6	300	1

### 12-channel

4084	1 - 10	±8.0 to ±2.0	≤6.0 to ≤1.2	10	1
4085	5 - 50	±4.0 to ±1.6	≤2.5 to ≤0.6	200	1
4086	20 - 200	±3.0 to ±1.0	≤1.5 to ≤0.6	200/300	1
4087	50 - 300	±1.6 to ±1.0	≤1.5 to ≤0.6	300	1

\* Non-filtered tip size suggestion

## Corning Lambda Plus Starter Kit

Cat. No.	Description	Qty/Cs
4069	Lambda Plus Starter Kit Includes: 4 single-channel pipettors: 0.5 to 10 µL (Cat. No. 4071), 2 to 20 µL (Cat. No. 4072), 20 to 200 µL (Cat. No. 4074), 100 to 1000 µL (Cat. No. 4075); Universal carousel rack for six single-channel pipettors (Cat. No. 4078; Corning DeckWorks pipet tips: 10 µL (Cat. No. 4135), 200 µL (Cat. No. 4138), 1000 µL (Cat. No. 4140)	1

### Accessories

Cat. No.	Description	Qty/Cs
4078	Corning Universal carousel rack for six Corning Lambda Plus single-channel pipettors	1
4079	Corning Universal linear rack for Corning Lambda Plus single- and multi-channel pipettors	1
4088	Corning Pipettor stand for Corning 8- and 12-channel pipettors	1
6066	Universal linear stand for four pipettors, orange (four single-channel, maximum of two 8-channel or 12-channel pipettors)	1
6067	Universal linear stand for four pipettors, transparent (four single-channel, maximum of two 8-channel or 12-channel pipettors)	1
6068	Universal linear stand for six pipettors, transparent (six single-channel, maximum of three 8-channel or 12-channel pipettors)	1



### Costar® 8-Pette® and 12-Pette Multi-channel Pipettors

These multi-channel pipettors feature a unique, ergonomic trigger-style aspiration and dispense control mechanism designed to reduce thumb fatigue during repetitive pipetting.

Cat. No.	Volume Range (µL)	Channels	Qty/Pk	Qty/Cs
4880	20 - 200	12	1	1
4888	20 - 200	8	1	1



### Corning® Stripettor™ Ultra Pipet Controller

The Stripettor Ultra pipet controller is designed for use with glass and plastic serological pipets from 0.5 to 100 mL. When fully charged, the batteries enable up to 8 hours of continuous use. Aspirating and dispensing speed is controlled through the finger triggers.

- ▶ LCD display for continuous visualization of speed, modes, and battery status
- ▶ Colored nose pieces for user or application identification
- ▶ 2-year warranty

Cat. No.	Description	Qty/Pk	Qty/Cs
4099	Stripettor Ultra Pipet Controller	1	1



#### Accessories

Cat. No.	Description	Qty/Pk	Qty/Cs
4991	Hydrophobic PTFE filter 0.2 µm (5 pcs)	5	5
4992	Hydrophobic PTFE filter 0.45 µm (5 pcs)	5	5
4993	Silicone pipet holder	1	1
4994	Battery set, 3 x AAA, NiHM	3	3
4995	Battery cover	1	1
4996	Universal power supply, 9V with set of adaptors (EU, US, UK, and AUS)	1	1
4997	Colored nose pieces, set of 4 (orange, yellow, green, red)	4	4



### Corning Aspirator Device and Accessories

Cat. No.	Description	Qty/Pk	Qty/Cs
4930	Aspirator device (includes hand piece, grommet for accessory attachment, and single-channel adapter for use with disposable pipet tips)	1	1
4931	8-channel adapter for use with disposable pipet tips	1	1
9016	Aspirating pipet, without graduations, unplugged, sterile, paper/plastic wrapped	50	500



### Transtar®-96 Liquid Transfer System

- ▶ A portable, autoclavable liquid handling device for use with 96-well plates
- ▶ A sterile 96 tip disposable cartridge, which loads into the Transtar system, enables liquids to be aspirated, transferred, and dispensed over a volume range of 25 to 200 µL in 5 µL increments
- ▶ Transtar-96 system accuracy is rated at ±5% at all volume levels

Cat. No.	Description	Sterile	Qty/Pk	Qty/Cs
7605	Transtar-96, adjustable-volume pipettor	N/A	1	1
7606	Transtar elevator	N/A	1	1
7610	Transtar disposable cartridges	Yes	1	24
4876	Transtar disposable reservoir liner, open	Yes	1	100
4877	Transtar disposable reservoir liner, 12-channel	Yes	1	100
4878	Transtar disposable reservoir liner, 8-channel	Yes	1	100



### Costar® Reagent Reservoirs

The reagent reservoirs are manufactured from modified polystyrene, are sterile, and disposable.

Cat No.	Volume (mL)	Color	Qty/Pk	Qty/Cs
4870	50	White	5	200
4871	50	White	1	100
4872	100	White	5	200
4873	100	White	1	100



## Corning® Step-R™ Repeating Pipettor and Syringe Tips

The Corning Step-R Repeating Pipettor is suitable to dispense volatile, dense, viscous, or foaming liquids, and for all applications where long dosing series are required. It works with 8 syringe tip sizes to dispense doses from 1 µL up to 5 mL.

- ▶ Easy volume setting: Volume selection chart conveniently located on the device
- ▶ Fast and precise multiple dispensing: Up to 48 pipetting doses without refilling the syringe tip
- ▶ Wide range of polypropylene syringe tips: 8 different sizes, sterile and non-sterile versions available
- ▶ Positive displacement syringe tips: Dedicated to work with high density or vapor pressure liquids such as glycerol or ethanol
- ▶ Maintenance-free
- ▶ 3-year warranty on the instrument

Cat. No.	Description	Qty/Pk	Qty/Cs
4217	Corning Step-R Repeating Pipettor	–	1
6620	Syringe tips, 0.05 mL	100	100
6628	Syringe tips, 0.05 mL, sterile	1	100
6621	Syringe tips, 0.5 mL	100	100
6629	Syringe tips, 0.5 mL, sterile	1	100
6622	Syringe tips, 1.25 mL	100	100
6630	Syringe tips, 1.25 mL, sterile	1	100
6623	Syringe tips, 2.5 mL	100	100
6631	Syringe tips, 2.5 mL, sterile	1	100
6624	Syringe tips, 5 mL	100	100
6632	Syringe tips, 5 mL, sterile	1	100
6625	Syringe tips, 12.5 mL	100	100
6633	Syringe tips, 12.5 mL, sterile	1	100
6626	Syringe tips, 25 mL	25	25
6634	Syringe tips, 25 mL, sterile	1	25
6627	Syringe tips, 50 mL	25	25
6635	Syringe tips, 50 mL, sterile	1	25

### Accessories

Cat. No.	Description	Qty/Cs
4218	Adapter for 25 mL syringe tips	1
4219	Adapter for 50 mL syringe tips	1

## Corning Step-R Starter Pack

The Corning Step-R starter kit contains:

- ▶ Corning Step-R Repeating Pipettor (Cat. No. 4217)
- ▶ Adapter for 25 mL syringe tips (Cat. No. 4218) and 50 mL syringe tips (Cat. No. 4219)
- ▶ Syringe tips (5/pk) of 0.05 mL (Cat. No. 6620), 2.5 mL (Cat. No. 6623), 5 mL (Cat. No. 6624), 12.5 mL (Cat. No. 6625)
- ▶ Syringe tips (2/pk) of 25 mL (Cat. No. 6626), and 50 mL (Cat. No. 6627)

Cat. No.	Description	Qty/Cs
6636	Corning Step-R Starter Pack	1 kit



Corning Step-R Starter Pack

# Centrifugation Equipment

## Corning® LSE™ Mini Microcentrifuge



The Corning LSE Mini Microcentrifuge is a personal bench top instrument that operates at a fixed speed of 6,000 rpm (RCF 2,000 x g) and was designed for quick spin downs of micro-samples.

- ▶ Quick release rotor system eliminates the need for tools to exchange rotors
- ▶ Electronic braking provides rapid deceleration for more efficient sample prep
- ▶ Compact, rugged design withstands heavy use in crowded lab environment
- ▶ Dual lid switch provides safe operation
- ▶ Ergonomic design allows for comfortable handling
- ▶ Certifications CE, cTUVus

Cat. No.	Description	Voltage	Plug Type	Speed (rpm)	Weight	Dimensions (H x W x D)	Qty/Cs
6770	LSE Mini microcentrifuge	110-240V, 50/60Hz	Universal	6,000	2.3 lbs. (1.1 kg)	6.8 x 5.8 x 4.8 in. (17.4 x 14.8 x 12.2 cm)	1

### Accessories included in Cat. No. 6770 and also sold separately:

Cat. No.	Description	Qty/Cs
6770-RT	Rotor, holds 8 x 1.5/2.0 mL tubes	1
6770-RTS	Rotor, holds 4 x 8-strip tubes	1
6770-RTA.20	Adapter, 0.20 for rotor (Cat. No. 6770-RT)	8
6770-RTA.25	Adapter, 0.25 for rotor (Cat. No. 6770-RT)	8
6770-RTA.5	Adapter, 0.5 for rotor (Cat. No. 6770-RT)	8
401025	Power adapter, 24V	1





## Corning® LSE™ High Speed Microcentrifuge

The Corning LSE high speed microcentrifuge features an easy-to-use, digital control interface, and high-speed performance for quick nucleic acid and protein separations. Two control knobs are used to precisely set rotor speed and run time, and parameters are shown on the easy-to-read LED displays. Press the “Speed/G-force” knob to toggle the display between rpm and calculated g-force.

The LSE high speed microcentrifuge incorporates a brushless drive and unique air cooling system to both reduce noise and minimize sample heating even during prolonged runs at maximum speed.

- ▶ Fast acceleration to a maximum speed 13,300 rpm/16,300 x g
- ▶ Complete with easy access, 24 x 1.5/2.0 mL rotor
- ▶ Precise, digital control system
- ▶ Set and view rotor speed in rpm or g-force
- ▶ Quiet and cool running, even at maximum speed

Cat. No.	Description	Voltage	Plug Type	Speed (rpm)	Weight	Dimensions (H x W x D)	Qty/Cs
6765-HS	LSE high speed microcentrifuge	120V, 50/60Hz	US	500 - 13,300	18 lbs. (8.1 kg)	9.25 x 11.5 x 8.5 in. (23.5 x 29.3 x 21.6 cm)	1
6766-HS	LSE high speed microcentrifuge	230V, 50/60Hz	EU	500 - 13,300	18 lbs. (8.1 kg)	9.25 x 11.5 x 8.5 in. (23.5 x 29.3 x 21.6 cm)	1
6767-HS	LSE high speed microcentrifuge	230V, 50/60Hz	UK	500 - 13,300	18 lbs. (8.1 kg)	9.25 x 11.5 x 8.5 in. (23.5 x 29.3 x 21.6 cm)	1
6768-HS	LSE high speed microcentrifuge	100V, 50/60Hz	JP	500 - 13,300	18 lbs. (8.1 kg)	9.25 x 11.5 x 8.5 in. (23.5 x 29.3 x 21.6 cm)	1

### Accessories

Cat. No.	Description	Qty/Pk
480134	Individual adaptors for 0.5/0.4 mL tubes	6
480135	Individual adaptors for 0.2 mL tubes	6

## Corning® LSE™ Compact Centrifuge

The Corning LSE compact centrifuge is a space saving centrifuge ideal for use in life science and industrial research labs.

Four angle rotors are available for this centrifuge, including an innovative combination rotor designed by Corning to allow for greater versatility. This multi-purpose rotor can accommodate various tube sizes including a 5 mL microcentrifuge tube, as well as round and conical bottom 15 mL and 50 mL centrifuge tubes. Tubes are inserted at an increased fixed angle to allow for improved efficiency of cellular pelleting. An equal g-force is applied to the samples when spinning 15 mL and 50 mL tubes simultaneously. In addition, the LSE compact centrifuge can accommodate a swing-out rotor for 6 x 5 mL.

The centrifuge's control panel features a large digital display and a convenient turn knob for setting parameter values. An internal microprocessor maintains precise control over operation with ten levels of acceleration and deceleration and a speed range from 200 rpm to 6,000 rpm. For safety considerations, the centrifuge is equipped with an electronic lid lock system, over speed protection, and an automatic shut off imbalance detection system.

- ▶ Maximum capacity: 6 x 50 mL
- ▶ Maximum speed: 6,000 rpm/4,185 x g
- ▶ Accepts both conical and round bottom tubes
- ▶ Space saving footprint: 11" x 14.6" x 10"



Cat. No.	Description	Voltage	Plug Type	Speed (rpm)	Weight (kg)	Dimensions (L x W x D)	Qty/Cs
6755	LSE compact centrifuge	120V, 50/60Hz	US	200 - 6,000	33 lbs. (15 kg)	11 x 14.6 x 10.2 in. (28 x 37 x 26 cm)	1
6756	LSE compact centrifuge	100V, 50/60Hz	JP	200 - 6,000	33 lbs. (15 kg)	11 x 14.6 x 10.2 in. (28 x 37 x 26 cm)	1
6758	LSE compact centrifuge	230V, 50/60Hz	UK	200 - 6,000	33 lbs. (15 kg)	11 x 14.6 x 10.2 in. (28 x 37 x 26 cm)	1
6759	LSE compact centrifuge	230V, 50/60Hz	EU	200 - 6,000	33 lbs. (15 kg)	11 x 14.6 x 10.2 in. (28 x 37 x 26 cm)	1

### Rotors

Cat. No.	Description	Max. Speed (rpm)	Max. RCF	Qty/Cs
480136	LSE 6 x 50 mL fixed angle rotor	6,000	3,820	1
480137	LSE 12 x 15 mL fixed angle rotor	6,000	4,180	1
480138	LSE 6 x 5 mL swing-out rotor	3,500	1,450	1
480139	LSE 18 x 1.5 mL fixed angle rotor	6,000	2,930	1
480143	LSE combination rotor for 5, 15, and 50 mL tubes	6,000	3,820	1

### Adapters

Cat. No.	Description	Qty/Cs
480140	LSE adapters for 10 and 15 mL tubes in 50 mL rotor	6
480141	LSE adapters for 5 and 7 mL tubes in 50 mL rotor	6
480142	LSE adapters for 5, 7, and 10 mL tubes in 15 mL rotor	6



6 x 50 mL fixed angle rotor (Cat. No. 480136)



12 x 15 mL fixed angle rotor (Cat. No. 480137)



6 x 5 mL swing-out rotor (Cat. No. 480138)



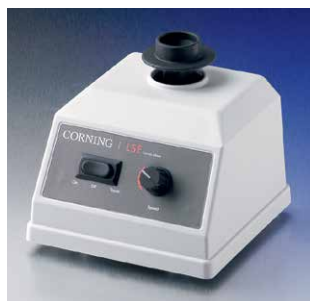
18 x 1.5 mL fixed angle rotor (Cat. No. 480139)



Combination rotor (Cat. No. 480143)

# Agitation Equipment

## Corning® LSE™ Vortex Mixer



The Corning LSE variable speed vortex mixer provides fast, efficient mixing with minimal vibration. The unit features a powerful, counter-balanced motor drive, and continuous or “touch” mix modes. A range of accessories are available for all common sample tubes and containers.

- ▶ Variable speed for gentle to vigorous mixing
- ▶ Optimized counter balance for minimal vibration
- ▶ Lightweight and portable
- ▶ Includes cup head for all standard microtubes and centrifuge tubes
- ▶ Mix a variety of tubes and plates with optional accessory heads
- ▶ Touch and continuous mix modes



Accessory heads for Corning LSE vortex mixer

Cat. No.	Description	Voltage	Plug Type	Speed (rpm)	Weight	Dimensions (L x W x D)	Qty/Cs
6775	LSE vortex mixer	120V, 50/60Hz	US	0 - 3,400	4.8 lbs. (2.2 kg)	5.5 x 6.3 x 5.1 in. (14 x 16 x 13 cm)	1
6776	LSE vortex mixer	230V, 50/60Hz	EU	0 - 2,850	4.8 lbs. (2.2 kg)	5.5 x 6.3 x 5.1 in. (14 x 16 x 13 cm)	1
6777	LSE vortex mixer	230V, 50/60Hz	UK	0 - 2,850	4.8 lbs. (2.2 kg)	5.5 x 6.3 x 5.1 in. (14 x 16 x 13 cm)	1
6778	LSE vortex mixer	100V, 50/60Hz	JP	0 - 2,850	4.8 lbs. (2.2 kg)	5.5 x 6.3 x 5.1 in. (14 x 16 x 13 cm)	1

### Accessories

Cat. No.	Description	Qty/Cs
480100	Optional head, 3 inch, for processing larger numbers of tubes	1
480101	Optional head for 24 x 1.5/2.0 mL tubes, 24 x 0.5 mL tubes, and 32 x 0.2 mL tubes (or 4 tube strips)	1
480102	Optional head for 1 microplate, or 64 x 0.2 mL tubes, or 8 x 0.2 mL tube strips	1
480103	Optional head for 8 x 15 mL and 8 x 12/13 mm diameter tubes	1
480104	Optional head attachment for 6 x 50 mL tubes	1
480105	Optional head for 12 x 1.5/2.0 mL tubes, held horizontally	1
480106	Optional head for 4 x 15 mL tubes, held horizontally	1
480107	Optional head for 2 x 50 mL tubes, held horizontally	1

## Corning LSE Digital Microplate Shaker



The Corning LSE digital microplate shaker features digital control of shaking speed and run time. A single control knob is used to set parameters, and values are shown on a large 3-digit display. A sturdy base encloses the motor for quiet, vibration-free operation.

The included stainless steel platform accommodates up to 4 microplates (standard or deep well), and the shaker is safe for use in temperature controlled environments from 4°C to 65°C.

- ▶ Large capacity – process up to 4 microplates
- ▶ 3 mm orbit for resuspending, homogenizing, or vortexing
- ▶ Large digital display with single-knob control of speed time
- ▶ Suitable for cold room or incubator use

Cat. No.	Description	Voltage	Plug Type	Speed (rpm)	Weight	Dimensions (L x W x D)	Qty/Cs
6780-4	LSE digital microplate shaker	120V, 50/60Hz	US	100 - 1,400	9.5 lbs. (4.3 kg)	6.6 x 10.98 x 6 in. (16.8 x 27.9 x 15.3 cm)	1
6781-4	LSE digital microplate shaker	230V, 50/60Hz	EU	100 - 1,200	9.5 lbs. (4.3 kg)	6.6 x 10.98 x 6 in. (16.8 x 27.9 x 15.3 cm)	1
6782-4	LSE digital microplate shaker	230V, 50/60Hz	UK	100 - 1,200	9.5 lbs. (4.3 kg)	6.6 x 10.98 x 6 in. (16.8 x 27.9 x 15.3 cm)	1

## Corning® LSE™ Low Speed Orbital Shaker



The Corning LSE low speed orbital shaker includes a 30 x 30 cm platform and is ideal for staining and destaining gels, washing blots and general mixing applications. Speed can be set from 3 to 60 rpm and the timer can be set for up to 2 hours or for continuous operation.

- ▶ Ideal for staining and washing of fragile gels
- ▶ Gentle motion prevents foaming of liquids
- ▶ Simple analog control with easy-turn knobs
- ▶ 19 mm orbit for blotting, gel staining, and general mixing
- ▶ Safe for cold room and incubator use

Cat. No.	Description	Voltage	Plug Type	Speed (rpm)	Weight	Dimensions (L x W x D)	Qty/Cs
6780-FP	LSE low speed orbital shaker	120V, 50/60Hz	US	3 - 60	11 lbs. (5 kg)	10 x 12.6 x 6.3 in. (25.5 x 32 x 16 cm)	1
6781-FP	LSE low speed orbital shaker	230V, 50/60Hz	EU	3 - 60	11 lbs. (5 kg)	10 x 12.6 x 6.3 in. (25.5 x 32 x 16 cm)	1
6782-FP	LSE low speed orbital shaker	230V, 50/60Hz	UK	3 - 60	11 lbs. (5 kg)	10 x 12.6 x 6.3 in. (25.5 x 32 x 16 cm)	1

## Corning LSE Orbital Shaker



Orbital shaker with optional clamps and flasks

The Corning LSE orbital shaker meets a variety of shaking and mixing applications. A powerful brushless motor and counter-balanced shaker mechanism provides smooth operation for years of trouble-free use. Different platforms (order separately) are available and are easily interchangeable.

- ▶ Two stainless steel platform options
- ▶ 19 mm orbit for aeration of cultures and staining gels
- ▶ Large digital display with single-knob control
- ▶ Digital control of shaking speed and time
- ▶ Safe for cold room or incubator use
- ▶ Maximum capacity: 4 x 1L, 5 x 500 mL, 9 x 250 mL, or 16 x 125 mL

Cat. No.	Description	Voltage	Plug Type	Speed (rpm)	Weight	Dimensions (L x W x D)	Qty/Cs
6780-NP	LSE orbital shaker	120V, 50/60Hz	US	20 - 300	16 lbs. (7.3 kg)	10.1 x 12.5 x 5 in. (25.6 x 31.8 x 12.7 cm)	1
6781-NP	LSE orbital shaker	230V, 50/60Hz	EU	20 - 300	16 lbs. (7.3 kg)	10.1 x 12.5 x 5 in. (25.6 x 31.8 x 12.7 cm)	1
6782-NP	LSE orbital shaker	230V, 50/60Hz	UK	20 - 300	16 lbs. (7.3 kg)	10.1 x 12.5 x 5 in. (25.6 x 31.8 x 12.7 cm)	1

### Accessories

Cat. No.	Description	Qty/Cs
480108	Flat platform with rubber mat	1
480109	Flask clamp platform (without clamps)	1
480110*	Clamp for 25 mL flask	1
480111*	Clamp for 50 mL flask	1
480112*	Clamp for 125 mL flask	1
480113*	Clamp for 250 mL flask	1
480114*	Clamp for 500 mL flask	1
480115*	Clamp for 1L flask	1

\*Also fits the 49L and 71L shaking incubators, see pages 13 and 14.

For a full listing of polycarbonate Erlenmeyer baffled flasks, see the **Bioprocess Product Selection Guide** (Corning Lit. Code CLS-BP-028).

### Corning® LSE™ Platform Rocker



The Corning LSE Platform Rocker is a compact yet high capacity rocker that is ideal for western blotting and general mixing applications.

- ▶ Low profile and compact size (11 lbs./5 kg)
- ▶ 11-pound load capacity
- ▶ Non-slip rubber pads to prevent sample containers from moving during operation
- ▶ Double platform model available for increased capacity
- ▶ 5-year warranty



Cat. No.	Description	Platform	Voltage	Speed (Tilts/min.)	Weight	Dimensions (L x W x H)	Qty/Cs
6703	LSE platform rocker	Single	115V, 50/60Hz	5 - 120	11.7 lbs. (5.3 kg)	12.8 x 14.2 x 5.7 in. (32.5 x 36 x 14.5 cm)	1
6704	LSE platform rocker	Single	230V, 50/60Hz	5 - 120	11 lbs. (5 kg)	12.8 x 14.2 x 5.7 in. (32.5 x 36 x 14.5 cm)	1
6705	LSE platform rocker	Double	115V, 50/60Hz	5 - 120	12.7 lbs. (5.8 kg)	12.8 x 14.2 x 5.7 in. (32.5 x 36 x 14.5 cm)	1
6706	LSE platform rocker	Double	230V, 50/60Hz	5 - 120	12.7 lbs. (5.8 kg)	12.8 x 14.2 x 5.7 in. (32.5 x 36 x 14.5 cm)	1

### Corning LSE Digital Vortexer



The Corning Digital Vortexer is a multipurpose shaker dedicated to a variety of shaking and mixing applications. The interchangeable platforms accommodate many different sample containers such as flasks, bottles, tube racks, microplates, boxes, and dishes.

- ▶ Three versatile platform options (available separately)
- ▶ Compact design with easy-access control panel
- ▶ Non-slip rubber mat to keep containers in place
- ▶ Safe for cold room or incubator use
- ▶ 5-year warranty



Cat. No.	Description	Voltage	Speed (rpm)	Weight	Dimensions (L x W x H)	Qty/Cs
6709	LSE digital vortexer	115V/60Hz	100 - 1200	4.4 lbs. (2 kg)	10.3 x 13.3 x 5.1 in. (26.2 x 33.7 x 13 cm)	1
6710	LSE digital vortexer	230V/50Hz	100 - 1200	4.4 lbs. (2 kg)	10.3 x 13.3 x 5.1 in. (26.2 x 33.7 x 13 cm)	1
48010	Platform for four microplates	—	—	—	—	1
48011	Platform with non-slip rubber mat	—	—	—	—	1
48012	Spring loaded platform for flasks, bottles, or tube racks	—	—	—	—	1



Platform for four microplates (Cat. No. 48010)



Platform with non-slip rubber mat (Cat. No. 48011)



Spring loaded platform for flasks, bottles, or tube racks (Cat. No. 48012)



# Constant Temperature Equipment

## Corning® LSE™ Benchtop Shaking Incubator



Truly a benchtop style, the lid on the Corning benchtop shaking incubator has a low pivot point which provides a space-saving size sure to fit on the lab bench and under shelves. Each unit includes a software package, which provides the option of saving data to an external computer or monitoring rpm and temperature throughout runs. The maximum capacity is 4 x 1L flasks.

### Specifications

Temperature Range	Ambient +5°C to +70°C
Operation Temperature Range	4°C to 65°C
Shaker Speed	20 to 300 rpm
Shaker Timer	1 minute to 99 hours or continuous
Temperature Increments	0.1°C
Speed Increments	1 rpm
Platform Dimensions	11.8 x 11.8 in. (30 x 30 cm)
Dimensions (W x D x H)	14.6 x 20.9 x 15.7 in. (37 x 53 x 40 cm)
Weight	43 lbs. (19.5 kg)
Height Lid Open	21.7 in. (55 cm)
Communication Port	USB to monitor temperature and rpm



Universal platform  
(Cat No. 480144)



Plastic clamps  
(Cat Nos. 480149/50/51/52)

Cat. No.	Description	Qty/Cs
6790	LSE Benchtop shaking incubator with platform, 120V	1
6791	LSE Benchtop shaking incubator with platform, 230V (EU plug)	1
480144	Universal platform, 30 x 30 cm	1
480145	Petri dish shelf	1
480146	Sticky mat, 150 x 150 x 30 mm	1
480147	Microtiter hotel, holds maximum 3 microplates	1
480148	Combination tube holder, 6 x 15/50 mL tubes	1
480149	Plastic clamp, 125 mL	1
480150	Plastic clamp, 250 mL	1
480151	Plastic clamp, 500 mL	1
480152	Plastic clamp, 1000 mL	1
480167	Clamp for 2,000 mL flask (for use with 71L shaking incubator only)	1
480156	Universal Spring loaded clamp platform	1

## Corning LSE 49L Shaking Incubator



This cabinet-style incubator has a compact footprint and can also be stacked to maximize space efficiency. The built in orbital shaker accepts a large assortment of platforms and clamps that can accommodate flasks, Petri dishes, and test tube racks. The maximum capacity is 4 x 1L flasks. For accessories, see page 14.

### Specifications

Chamber Volume	49L/1.7 cu. ft.
Temperature Range/Display	Ambient +5°C to 80°C in 0.1°C increments/digital
Temperature Uniformity/Accuracy	±0.25°C/±0.1°C
Shaker Speed	20 to 400 rpm (maximum 300 rpm when stacked)
Shaker Timer	0 to 99 minutes or continuous
Shaker Orbit	19 mm
Flask Capacity	4 x 1L, 5 x 500 mL, 9 x 250 mL, 16 x 125 mL
Construction	Interior: Mirrored stainless steel Exterior: Cold rolled steel
Chamber (W x D x H)	13.5 x 14.75 x 15 in. (34.3 x 37.5 x 38.1 cm)
Exterior (W x D x H)	23 x 19.25 x 22.25 in. (42.5 x 55 x 58 cm)
Weight	83 lbs. (37.7 kg)



Universal spring loaded clamp platform (Cat. No. 480156)

Cat. No.	Description	Qty/Cs
6750	Corning® LSE™ Shaking incubator, 49 Liters, 120V	1
6752	Corning LSE Shaking incubator, 49 Liters, 230V (EU and UK plug)	1
480153	Flask clamp platform, pre-drilled	1
480154	Flat platform with non-slip rubber mat (300 x 300 mm)	1
480155	Double flat platform with non-slip rubber mat (300 x 300 mm)	1
480156	Universal spring loaded clamp platform	1
480157	Shelf, full, for Cat. Nos. 6750 and 6752	1
480158	Stacking adapter for Cat. Nos. 6750 and 6752	1

### Corning LSE™ 71L Shaking Incubator

This high performance shaking incubator has a full size glass door and internal light that allows easy viewing of samples without disturbing the chamber contents. Mechanical convection provides a safe, stable temperature environment and fast chamber temperature recovery after opening the door. The maximum capacity is 4 x 2L/6 x 1L flasks.



#### Specifications

Chamber Volume	71L/2.5 cu. ft.
Temperature Range/Display	Ambient +5°C to 80°C
Temperature Uniformity/Accuracy	±0.2°C at 37°C
Temperature Display	0.1°C
Shaker Speed	20 to 300 rpm
Shaker Orbit	19 mm
Shaker Timer	0 to 99 minutes or continuous
Dimensions (W x D x H)	Chamber: 17.4 x 15.6 x 16 in. (44.2 x 39.6 x 40.6 cm) Exterior: 22.6 x 21.4 x 25 in. (57.4 x 54.4 x 63.5 cm)
Weight	140 lbs. (63.6 kg)

Cat. No.	Description	Qty/Cs
6753	LSE Shaking incubator, 71L, 120V	1
6754	LSE Shaking incubator, 71L, 230V (EU and UK plug)	1
480159	Shaking platform pre-drilled for flask clamps	1
480160	Flat shaker platform with non-slip rubber mat (390 x 330 mm)	1
480161	Platform with 4 x 2L flask clamps	1
480162	Platform with 6 x 1L flask clamps	1
480163	Platform with 8 x 500 mL flask clamps	1
480164	Platform with 12 x 250 mL flask clamps	1
480165	Platform with 20 x 125 mL flask clamps	1
480166	Platform with 30 x 50 mL flask clamps	1
480156	Universal spring loaded clamp platform	1
480167	Clamp for 2,000 mL flask (for use with 71L shaking incubator only)	1
480168	Rack holder for 15 mL test tubes	1
480169	Rack holder for 50 mL test tubes	1
480170	Shelf, full, for Cat. Nos. 6753 and 6754	1



Cat. No. 480160



Cat. No. 480161



Cat. No. 480162



Cat. No. 480163



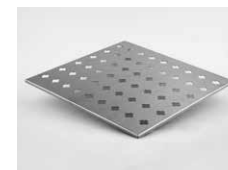
Cat. No. 480164



Cat. No. 480166



Cat. Nos. 480168/69



Cat. No. 480170



## Corning® LSE™ 6 Liter Digital Water Bath

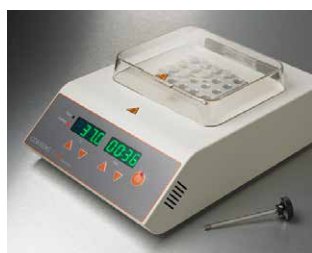
The Corning LSE Digital Water Bath is constructed from corrosion-resistant stainless steel and can accommodate up to 6 liters of water or can serve as a dry bath when using thermal beads.

- ▶ Compact design
- ▶ Stainless steel cover to retain heat and minimize evaporation
- ▶ Powerful 500W heater programmed by LED digital controller
- ▶ Precise temperature control by hydraulic thermostat

### Specifications

Chamber capacity	6L
Chamber construction	Stainless steel
Chamber maximum load	20 lbs. (9.09 kg)
Temperature range	Ambient +5°C to 99°C
Exterior dimensions (W x D x H)	14.9 x 11.4 x 9.0 in. (12.9 in. with cover) 38 x 29 x 23 cm (33 cm with cover)
Chamber dimensions	12.6 x 6.7 x 6.9 in. (32 x 17 x 18 cm)
Weight	19 lbs. (8.6 kg)

Cat. No.	Description
6783	Digital water bath, 6L, 120V
6784	Digital water bath, 6L, 230V (EU and UK plug)



Single block digital dry bath heater

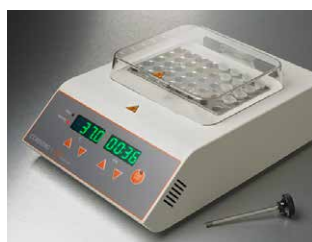
## Corning LSE Digital Dry Bath Heater

The Corning Digital Dry Bath Heaters are available in single, dual, and four block configurations (blocks not included, sold separately) and provide a broad temperature range up to 150°C, which makes them useful for a variety of applications in molecular biology, histology, clinical, environmental, and industrial laboratories. They have been designed to incorporate the best combination of features including block capacity, dual displays, and an external temperature probe that gives life science researchers the confidence and efficiency they need when working with precious samples.

- ▶ Single, dual, and four block capacity to maximize sample processing (blocks not included, sold separately)
- ▶ Dual display allows for easy monitoring of temperature and time
- ▶ USB connectivity enables traceability of data
- ▶ Molded block chamber provides excellent temperature uniformity
- ▶ 3-year warranty

### Specifications

Cat. No.	6875-SB, 6885-DB, 6895-FB
Dimensions	
Single and dual block	8.3 x 12.4 x 4.7 in. (21 x 29 x 12 cm)
Four block	8.3 x 16.3 x 4.7 in. (21 x 39 x 12 cm)
Capacity	1, 2, 4 blocks
Temperature Range	Ambient +5°C to 150°C
Temperature Accuracy	±0.3°C
Temperature Uniformity	±0.2°C
Temperature Increments	0.1°C
Digital Display	Dual
External Temperature Probe	Yes, optional accessory
Chamber Construction	Uniformly molded
Block Lid	Yes, included
Interface	USB
Certifications	CE/TUV/CSA



Dual block digital dry bath heater



Four block digital dry bath heater



Digital dry bath heaters

Cat. No.	Description	Block Capacity	Voltage	Plug	Weight	Dimensions (L x W x H)	Qty/Cs
6875-SB	LSE digital dry bath heater	Single	120V	US	7.0 lbs. (3.2 kg)	8.3 x 12.4 x 4.7 in. (21 x 29 x 12 cm)	1
6885-DB	LSE digital dry bath heater	Dual	120V	US	7.0 lbs. (3.2 kg)	8.3 x 12.4 x 4.7 in. (21 x 29 x 12 cm)	1
6895-FB	LSE digital dry bath heater	Four	120V	US	9.6 lbs. (4.4 kg)	8.3 x 16.3 x 4.7 in. (21 x 39 x 12 cm)	1
6876-SB	LSE digital dry bath heater	Single	230V	EU	7.0 lbs. (3.2 kg)	8.3 x 12.4 x 4.7 in. (21 x 29 x 12 cm)	1
6886-DB	LSE digital dry bath heater	Dual	230V	EU	7.0 lbs. (3.2 kg)	8.3 x 12.4 x 4.7 in. (21 x 29 x 12 cm)	1
6896-FB	LSE digital dry bath heater	Four	230V	EU	9.6 lbs. (4.4 kg)	8.3 x 16.3 x 4.7 in. (21 x 39 x 12 cm)	1
6877-SB	LSE digital dry bath heater	Single	230V	UK	7.0 lbs. (3.2 kg)	8.3 x 12.4 x 4.7 in. (21 x 29 x 12 cm)	1
6887-DB	LSE digital dry bath heater	Dual	230V	UK	7.0 lbs. (3.2 kg)	8.3 x 12.4 x 4.7 in. (21 x 29 x 12 cm)	1
6897-FB	LSE digital dry bath heater	Four	230V	UK	9.6 lbs. (4.4 kg)	8.3 x 16.3 x 4.7 in. (21 x 39 x 12 cm)	1
6878-SB	LSE digital dry bath heater	Single	100V	JP	7.0 lbs. (3.2 kg)	8.3 x 12.4 x 4.7 in. (21 x 29 x 12 cm)	1
6888-DB	LSE digital dry bath heater	Dual	100V	JP	7.0 lbs. (3.2 kg)	8.3 x 12.4 x 4.7 in. (21 x 29 x 12 cm)	1
6898-FB	LSE digital dry bath heater	Four	100V	JP	9.6 lbs. (4.4 kg)	8.3 x 16.3 x 4.7 in. (21 x 39 x 12 cm)	1



Digital dry bath heater accessories

### Accessories

Cat. No.	Description	Qty/Cs
480116	Single block, 48 x 0.2 mL PCR tubes or 6 x 0.2 mL strips	1
480117	Single block, 20 x 2.0 mL tubes	1
480118	Single block, 24 x 0.5 mL tubes	1
480119	Single block, 24 x 1.5 mL tubes	1
480120	Single block, 35 x 6 mm tubes	1
480121	Single block, 20 x 10 mm tubes	1
480122	Single block, 20 x 12 mm tubes	1
480123	Single block, 20 x 13 mm tubes	1
480124	Single block, 12 x 15 mL centrifuge tubes	1
480125	Single block, 12 x 16 mm tubes	1
480126	Single block, 12 x 17 mm tubes	1
480127	Single block, 6 x 20 mm tubes	1
480128	Single block, 6 x 25 mm tubes	1
480129	Single block, 5 x 50 mL centrifuge tubes (for single block unit only)	1
480130	Single block, 96-well PCR microplate, skirted or nonskirted	1
480131	Dual block, 96-well microplate or 4 slides (for dual block unit only)	1
480132	Dual block, 96-well PCR microplate, skirted, or nonskirted (for dual block unit only)	1
480133	Dual block, 384-well PCR microplate (for dual block unit only)	1

## Corning® Digital Hot Plates, Stirring Hot Plates, and Stirrers

Corning digital hot plates, stirrers, and stirring hot plates are made with the same durability and quality Corning has been putting into Pyroceram® top products since 1964. All models include a Pyroceram top.



Model PC-400D



Model PC-410D



Model PC-420D

- ▶ Twin display stirring hot plate shows both temperature and stirring speed on separate digital displays to ensure accuracy
- ▶ Temperature accuracy within  $\pm 2^{\circ}\text{C}$  and stirring speeds at  $\pm 5\%$  of the speed setting you choose
- ▶ Digital displays indicate when set temperature and stirring speeds are reached
- ▶ Safety indicators – power button and hot top indicators warn if unit is plugged in or is too hot to touch
- ▶ Angled front panel and large knobs minimize damage from spills
- ▶ PC-400D/410D/420D top plate size: 5 x 7 in. (12.7 x 17.8 cm)
- ▶ PC-600D/610D/620D top plate size: 10 x 10 in. (25.4 x 25.4 cm)
- ▶ 2-year warranty

### Digital Hot Plates

Cat. No.	Model	Voltage	Temperature Range	Dimensions (L x W x D)
6795-400D	PC-400D	120V/60Hz	5°C to 550°C	4.3 x 7.7 x 11 in. (10.8 x 19.7 x 28 cm)
6795-600D	PC-600D	120V/60Hz	5°C to 550°C	4.6 x 7.7 x 15.4 in. (11.75 x 19.7 x 39.1 cm)
6796-400D*	PC-400D	230V/50Hz	5°C to 550°C	4.3 x 7.7 x 11 in. (10.8 x 19.7 x 28 cm)
6796-600D*	PC-600D	230V/50Hz	5°C to 550°C	4.6 x 7.7 x 15.4 in. (11.75 x 19.7 x 39.1 cm)
6797-400D	PC-400D	100V/60Hz	5°C to 550°C	4.3 x 7.7 x 11 in. (10.8 x 19.7 x 28 cm)
6797-600D	PC-600D	100V/60Hz	5°C to 550°C	4.6 x 7.7 x 15.4 in. (11.75 x 19.7 x 39.1 cm)
6798-400D	PC-400D	230V/50Hz	5°C to 550°C	4.3 x 7.7 x 11 in. (10.8 x 19.7 x 28 cm)
6798-600D	PC-600D	230V/50Hz	5°C to 550°C	4.6 x 7.7 x 15.4 in. (11.75 x 19.7 x 39.1 cm)

### Digital Stirring Hot Plates

Cat. No.	Model	Voltage	Temperature/ Stir Range (rpm)	Dimensions (L x W x D)
6795-420D	PC-420D	120V/60Hz	5°C - 550°C/60 - 1,150	4.3 x 7.7 x 11 in. (10.8 x 19.7 x 28 cm)
6795-420KIT <sup>†</sup>	PC-420D	120V/60Hz	5°C - 550°C/60 - 1,150	4.3 x 7.7 x 11 in. (10.8 x 19.7 x 28 cm)
6795-620D	PC-620D	120V/60Hz	5°C - 550°C/60 - 1,150	4.6 x 7.7 x 15.4 in. (11.75 x 19.7 x 39.1 cm)
6795-620KIT <sup>†</sup>	PC-620D	120V/60Hz	5°C - 550°C/60 - 1,150	4.6 x 7.7 x 15.4 in. (11.75 x 19.7 x 39.1 cm)
6796-420D	PC-420D	230V/50Hz	5°C - 550°C/60 - 1,150	4.3 x 7.7 x 11 in. (10.8 x 19.7 x 28 cm)
6796-620D	PC-620D	230V/50Hz	5°C - 550°C/60 - 1,150	4.6 x 7.7 x 15.4 in. (11.75 x 19.7 x 39.1 cm)
6797-420D	PC-420D	100V/60Hz	5°C - 550°C/60 - 1,150	4.3 x 7.7 x 11 in. (10.8 x 19.7 x 28 cm)
6797-620D	PC-620D	100V/60Hz	5°C - 550°C/60 - 1,150	4.6 x 7.7 x 15.4 in. (11.75 x 19.7 x 39.1 cm)
6798-420D	PC-420D	230V/50Hz	5°C - 550°C/60 - 1,150	4.3 x 7.7 x 11 in. (10.8 x 19.7 x 28 cm)
6798-620D	PC-620D	230V/50Hz	5°C - 550°C/60 - 1,150	4.6 x 7.7 x 15.4 in. (11.75 x 19.7 x 39.1 cm)

<sup>†</sup> 6795-420KIT and 6795-620KIT includes: One stirring hot plate (Cat No 6795-420D in 6795-420KIT or Cat No. 6795-620D in 6795-620KIT); external temperature controller (Cat. No. 6795PR); vertical support rod (Cat. No 440129) supplied as two 9-inch (22.9 cm) support rods that can be screwed together (18 inches); stir bar retriever (Cat. No. 6970SR).

Available for purchase separately and not included in the Kits: Bosshead clamp (Cat. No. 440140) and holding rod (Cat. No. 440141).

### Digital Stirrers

Cat. No.	Model	Voltage	Stir Range (rpm)	Dimensions (L x W x D)
6795-410D	PC-410D	120V/60Hz	60 to 1,150	4.3 x 7.7 x 11 in. (10.8 x 19.7 x 28 cm)
6795-610D	PC-610D	120V/60Hz	60 to 1,150	4.6 x 7.7 x 15.4 in. (11.75 x 19.7 x 39.1 cm)
6796-410D	PC-410D	230V/50Hz	60 to 1,150	4.3 x 7.7 x 11 in. (10.8 x 19.7 x 28 cm)
6796-610D	PC-610D	230V/50Hz	60 to 1,150	4.6 x 7.7 x 15.4 in. (11.75 x 19.7 x 39.1 cm)
6797-410D	PC-410D	100V/60Hz	60 to 1,150	4.3 x 7.7 x 11 in. (10.8 x 19.7 x 28 cm)
6797-610D	PC-610D	100V/60Hz	60 to 1,150	4.6 x 7.7 x 15.4 in. (11.75 x 19.7 x 39.1 cm)
6798-410D	PC-410D	230V/50Hz	60 to 1,150	4.3 x 7.7 x 11 in. (10.8 x 19.7 x 28 cm)
6798-610D	PC-610D	230V/50Hz	60 to 1,150	4.6 x 7.7 x 15.4 in. (11.75 x 19.7 x 39.1 cm)



## Corning® Analog Hot Plates, Stirring Hot Plates, and Stirrers

### PC-200 Hot Plates

Corning's exclusive glass-ceramic Pyroceram® top is standard.

- ▶ Micro-chemistry size
- ▶ Hot top indicator light
- ▶ 2-year warranty



Cat. No.	Model	Power	Top Size	Temperature	Weight	Dimensions (H x W x D)
6795-200	PC-200	120V/60Hz/ 253W/2.1A	4" x 5"	77°F - 896°F (25°C - 480°C)	4 lbs. (1.8 kg)	4.4 x 5.8 x 7.3 in. (11.2 x 14.7 x 18.5 cm)
6796-200*	PC-200	230V/50Hz/ 253W/1.1A	4" x 5"	77°F - 896°F (25°C - 480°C)	4 lbs. (1.8 kg)	4.4 x 5.8 x 7.3 in. (11.2 x 14.7 x 18.5 cm)
6797-200	PC-200	100V/60Hz/ 253W/2.1A	4" x 5"	77°F - 896°F (25°C - 480°C)	4 lbs. (1.8 kg)	4.4 x 5.8 x 7.3 in. (11.2 x 14.7 x 18.5 cm)

\*230 volt 6796 hot plate comes with UK plug.

### Corning Scholar PC-170 Hot Plates

An economically priced hot plate that has a white enameled steel top plate that provides heat transfer up to 360°C. Dual heat shields dissipate heat and keep the case cool to the touch.

- ▶ Compact, saves on bench space
- ▶ UL/CUL approved
- ▶ 1-year warranty



Cat. No.	Model	Power	Top Size	Temperature	Weight	Dimensions (H x W x D)
6795-170	PC-170	120V/60Hz/ 250W/2.1A	5" x 5"	140°F - 680°F (60°C - 360°C)	3 lbs. (1.3 kg)	4 x 5 x 5 in. (10.2 x 12.7 x 12.7 cm)
6796-170	PC-170	230V/50Hz/ 250W/1.1A	5" x 5"	140°F - 680°F (60°C - 360°C)	3 lbs. (1.3 kg)	4 x 5 x 5 in. (10.2 x 12.7 x 12.7 cm)
6797-170	PC-170	100V/60Hz/ 250W/2.5A	5" x 5"	140°F - 680°F (60°C - 360°C)	3 lbs. (1.3 kg)	4 x 5 x 5 in. (10.2 x 12.7 x 12.7 cm)

\*230 volt 6796 hot plate comes with UK plug.

### PC-220 Hot Plate/Stirrers

Hot plate/stirrer units come with Corning's exclusive Pyroceram top.

- ▶ Micro-chemistry size
- ▶ Hot top indicator light
- ▶ Glass ceramic top
- ▶ 2-year warranty



Cat. No.	Model	Power	Top Size	Stir Range (rpm)	Temperature	Weight	Dimensions (L x W x D)
6795-220	PC-220	120V/60Hz/ 283W/2.4A	4" x 5"	60 - 1,100	77°F - 896°F (25°C - 480°C)	5.0 lbs. (2.3 kg)	4.4 x 5.8 x 7.3 in. (11.2 x 14.7 x 18.5 cm)
6796-220*	PC-220	230V/50Hz/ 288W/1.3A	4" x 5"	60 - 1,100	77°F - 896°F (25°C - 480°C)	5.0 lbs. (2.3 kg)	4.4 x 5.8 x 7.3 in. (11.2 x 14.7 x 18.5 cm)
6797-220	PC-220	100V/60Hz/ 280W/2.8A	4" x 5"	60 - 1,100	77°F - 896°F (25°C - 480°C)	5.0 lbs. (2.3 kg)	4.4 x 5.8 x 7.3 in. (11.2 x 14.7 x 18.5 cm)

\*230 volt 6796 hot plate/stirrer comes with UK plug.

### Accessory

Cat. No.	Description
411007	Power cord, 120V (PC-200 and 400)

## PC-210 Stirrers

PC-210 stirrers come with Corning's Pyroceram® top.

- ▶ Micro-chemistry size
- ▶ 2-year warranty



Cat. No.	Model	Power	Top Size	Stir Range (rpm)	Weight	Dimensions (L x W x D)
6795-210	PC-210	120V/60Hz/ 33W/0.3A	4" x 5"	60 - 1,100	4.5 lbs. (2 kg)	4.4 x 5.8 x 7.3 in. (11.2 x 14.7 x 18.5 cm)
6796-210*	PC-210	230V/50Hz/ 38W/0.17A	4" x 5"	60 - 1,100	4.5 lbs. (2 kg)	4.4 x 5.8 x 7.3 in. (11.2 x 14.7 x 18.5 cm)
6797-210	PC-210	100V/60Hz/ 30W/0.3A	4" x 5"	60 - 1,100	4.5 lbs. (2 kg)	4.4 x 5.8 x 7.3 in. (11.2 x 14.7 x 18.5 cm)

\*230 volt 6796 stirrer comes with UK plug.

## PC-611 Stirrer

The PC-611 is designed to stir large volumes of liquid with ease. The stirrer is designed for 5 gallon vessels (19L) but can stir up to 10 gallons. This powerful stirring is achieved with a very compact design that conserves bench space. The stirrer uses a magnet that is constructed out of rare earth metals for exceptional coupling strength. The magnet's strength also centers the stir bar quickly inside the vessel. Heavy duty motor and rugged plastic (ABS) top will provide years of reliable service. UL/CUL approved. Special features: The PC-611 achieves vigorous stirring with a more compact unit at a lower cost than competitive units. This high volume stirrer can handle many applications that previously required an overhead stirrer. One-year warranty.



Cat. No.	Model	Power	Top Size	Stir Range (rpm)	Weight	Dimensions (L x W x D)
6795-611	PC-611	120V/50-60Hz/ 144W/1.2A	11" x 11"	100 - 1,500	11.0 lbs. (5 kg)	4.8 x 12.0 x 14.4 in. (1.9 x 4.7 x 5.7 cm)

## Corning® Scholar PC-171 Stirrer

The Corning Scholar PC-171 stirrer provides compact design, vigorous stirring with alternating current motor for longer life and rugged construction. UL/CUL approved, 1-year warranty.



Cat. No.	Model	Power	Top Size	Stir Range (rpm)	Weight	Dimensions (L x W x D)
6795-171	PC-171	120V/60Hz/ 30W/0.25A	5" x 5"	100 - 1,600	4 lbs. (1.8 kg)	3.2 x 5.0 x 5.0 in. (1.3 x 2 x 2 cm)

## SS2I Stirrer

One-position slow speed stirrer with integral control to accommodate up to a 2L vessel. One-position model allows the user to spend less and save valuable bench space compared to multiple-position units. Integral speed control and glass-filled resin platform material.



Cat. No.	Model	Power	Speed Range (rpm)	No. Pos.	Nom. Stir Vol. per Pos.	Max. Vessel Diam. (mm)	Dimensions (mm) (L x W x D)	Weight (kg)	Motor Type
440811	SS2I	120V/ 60Hz	10 - 150	1	2L	150	150 x 150 x 70	0.9	DC, stepper

## SS10I Stirrer

One-position slow speed stirrer with integral control to accommodate up to a 10L vessel. Smooth reliable stirring at slow speeds helps promote healthy cell growth. Integral speed control and glass-filled resin platform material.



Cat. No.	Model	Power	Speed Range (rpm)	No. Pos.	Nom. Stir Vol. per Pos.	Max. Vessel Diam. (mm)	Dimensions (mm) (L x W x D)	Weight (kg)	Motor Type
440812	SS10I	120V/ 60Hz	10 - 150	1	10L	280	260 x 260 x 70	2.6	DC, stepper

## SS4I Stirrer



Four-position slow speed stirrer with integral control to accommodate up to four 1L vessels. Multiple positions allow the user to duplicate stirring conditions in up to four vessels. Integral speed control and glass-filled resin platform material.

Cat. No.	Model	Power	Speed Range (rpm)	No. Pos.	Nom. Stir Vol. per Pos.	Max. Vessel Diam. (mm)	Dimensions (mm) (L x W x D)	Weight (kg)	Motor Type
440814	SS4I	120V/60Hz	10 - 150	4	1L	130	260 x 260 x 70	3	DC, stepper





## MP4I, MP5I, and MP9I Multiple Position Stirrers with Integral Control

Corning now offers stirrers that stir up to nine vessels at the same time. These stirring platforms come in 4-, 5-, and 9-position models. The unit's magnets and DC motor provide smooth, well-coupled stirring up to 2,000 rpm. The speed of all positions on the units is set simultaneously with the integral knob. Integral speed control and glass-filled resin platform material.

Cat. No.	Model	Power	Speed Range (rpm)	No. Pos.	Nom. Stir Vol. per Pos.	Max. Vessel Diam. (mm)	Dimensions (mm) (L x W x D)	Weight (kg)	Motor Type
440824	MP4I	120V/60Hz	350 - 2,000	4	1L	130	260 x 260 x 70	3.1	DC
440825	MP5I	120V/60Hz	350 - 2,000	5	400 mL	95	260 x 260 x 70	3.2	DC
440826	MP9I	120V/60Hz	350 - 2,000	9	250 mL	75	260 x 260 x 70	3.8	DC

401023 Corning 120V power supply for slow speed and multiple position stirrers.

 Stir bar, 3/8" x 1" (Cat. No. 401435)

 Stir bar, 3/8" x 2" (Cat. No. 400430)

 Stir bar, 3/4" x 3" (Cat. No. 409000)

## Stir Bars and Stir Bar Retriever

Corning® magnetic stir bars are polytetrafluoroethylene (PTFE)-coated for increased chemical resistance. The Corning stir bar retriever contains a strong magnet to remove a stir bar from all glass and plastic containers used in the laboratory. The container must be taken off the magnetic stirrer before using the retriever as the high powered magnet in the stirrer cancels out the one in the retriever. The handle is designed for ergonomic and easy retrieval.

Cat. No.	Description	Use with Model	Qty/Pk	Qty/Cs
401435	Stir bar, 3/8" x 1"	PC-210/220/410D/420D	1	1
400430	Stir bar, 3/8" x 2"	PC-610D/620D	1	1
409000	Stir bar, 3/4" x 3"	PC-611	1	1
6970SR	Magnetic stir bar retriever	All Corning stirrers and hot plate/stirrers	1	1



Magnetic stir bar retriever (Cat. No. 6970SR)

## Temperature Controller and Accessories

When used with the digital hot plate or stirring hot plate, the external temperature controller ensures precision temperature accuracy of the liquid inside the vessel as opposed to the temperature of the hot plate top.

Cat. No.	Description	Use with Model
6795-PR*	Temperature controller for digital hot plates and stirring hot plates	PC-400D/420D/600D/620D
6795KIT	Corning Digital Hot Plate and Stirring Hot Plate Accessory Kit Includes: External temperature controller (Cat. No. 6795PR), 18" support rods (Cat. No. 440129), and stir bar retriever (Cat. No. 6970SR). Available for purchase separately and not included in the kit (boss head clamp (Cat. No. 440140 and holding rod (Cat. No. 440141).	PC-400D/420D/600D/620D
440129	Stainless steel support rod, two 9" (45.7 cm) rods, 5/16" diameter. Rods can be screwed together to 18"	All digital and PC-200/210/220
409831	Stainless steel support rod, 24" (61.0 cm), 7/16" diameter	PC-600D/610D/620D
400084	Stainless steel support rod, 12" (30.5 cm), 5/16" diameter	All digital and PC-200/210/220
440140†	Boss head clamp for use with 5/16" support rod and holding rod	All hot plates with 5/16" or smaller support rod
440141	Holding rod, thermocouple, stainless steel	All hot plates

\*Temperature controllers are not available for use with stirrer only units.

†Bosshead clamps to support rod; holding rod connects to bosshead. Temperature controller slides into holding rod.



Digital hot plate accessories

# Catalog Number Index

Cat. No.	Page No.	Cat. No.	Page No.	Cat. No.	Page No.	Cat. No.	Page No.	Cat. No.	Page No.
4069	4	6064	3	6781-FP	11	6885-DB	16	480123	16
4070	4	6065	3	6781-NP	11	6886-DB	16	480124	16
4071	4	6066	3,4	6782-4	10	6887-DB	16	480125	16
4072	4	6067	3,4	6782-FP	11	6888-DB	16	480126	16
4073	4	6068	3,4	6782-NP	11	6895-FB	16	480127	16
4074	4	6620	6	6783	15	6896-FB	16	480128	16
4075	4	6621	6	6784	15	6897-FB	16	480129	16
4078	4	6622	6	6790	13	6898-FB	16	480130	16
4079	4	6623	6	6791	13	6970SR	20	480131	16
4080	4	6624	6	6795-170	18	7605	5	480132	16
4081	4	6625	6	6795-171	19	7606	5	480133	16
4082	4	6626	6	6795-200	18	7610	5	480134	8
4083	4	6627	6	6795-210	19	9016	5	480135	8
4084	4	6628	6	6795-220	18	48010	12	480136	9
4085	4	6629	6	6795-400D	17	48011	12	480137	9
4086	4	6630	6	6795-410D	17	48012	12	480138	9
4087	4	6631	6	6795-420D	17	400084	20	480139	9
4088	3	6632	6	6795-420KIT	17	400430	20	480140	9
4088	4	6633	6	6795-600D	17	401023	20	480141	9
4099	5	6634	6	6795-610D	17	401025	7	480142	9
4217	6	6635	6	6795-611	19	401435	20	480143	9
4218	6	6636	6	6795-620D	17	409000	20	480144	13
4219	6	6703	12	6795-620KIT	17	409831	20	480145	13
4870	5	6704	12	6795KIT	20	440129	20	480146	13
4871	5	6705	12	6795-PR	20	440140	20	480147	13
4872	5	6706	12	6796-170	18	440141	20	480148	13
4873	5	6709	12	6796-200	18	440811	19	480149	13
4876	5	6710	12	6796-210	19	440812	19	480150	13
4877	5	6749	2	6796-220	18	440814	20	480151	13
4878	5	6750	14	6796-400D	17	440824	20	480152	13
4880	5	6752	14	6796-410D	17	440825	20	480153	14
4888	5	6753	14	6796-420D	17	440826	20	480154	14
4930	5	6754	14	6796-600D	17	480100	10	480155	14
4931	5	6755	9	6796-610D	17	480101	10	480156	13,14
4991	5	6756	9	6796-620D	17	480102	10	480157	14
4992	5	6758	9	6797-170	18	480103	10	480158	14
4993	5	6759	9	6797-200	18	480104	10	480159	14
4994	5	6765-HS	8	6797-210	19	480105	10	480160	14
4995	5	6766-HS	8	6797-220	18	480106	10	480161	14
4996	5	6767-HS	8	6797-400D	17	480107	10	480162	14
4997	5	6768-HS	8	6797-410D	17	480108	11	480163	14
6050	3	6770	7	6797-420D	17	480109	11	480164	14
6051	3	6770-RT	7	6797-600D	17	480110	11	480165	14
6052	3	6770-RTA.20	2	6797-610D	17	480111	11	480166	14
6053	3	6770-RTA.25	3	6797-620D	17	480112	11	480167	14
6054	3	6770-RTA.5	1	6798-400D	17	480113	11	480168	14
6055	3	6770-RTS	7	6798-410D	17	480114	11	480169	14
6056	3	6775	10	6798-420D	17	480115	11	480170	14
6057	3	6776	10	6798-600D	17	480116	16	480200	2
6058	3	6777	10	6798-610D	17	480117	16		
6059	3	6778	10	6798-620D	17	480118	16		
6060	3	6780-4	10	6875-SB	16	480119	16		
6061	3	6780-FP	11	6876-SB	16	480120	16		
6062	3	6780-NP	11	6877-SB	16	480121	16		
6063	3	6781-4	10	6878-SB	16	480122	16		

For more specific information on claims, visit the Certificates page at [www.corning.com/lifesciences](http://www.corning.com/lifesciences).

**Warranty/Disclaimer:** Unless otherwise specified, all products are for research use only. Not intended for use in diagnostic or therapeutic procedures. Corning Life Sciences makes no claims regarding the performance of these products for clinical or diagnostic applications.

For additional product or technical information, visit [www.corning.com/lifesciences](http://www.corning.com/lifesciences) or call 800.492.1110. Outside the United States, call +1.978.442.2200 or contact your local Corning sales office.

# CORNING

**Corning Incorporated**  
*Life Sciences*

836 North St.  
Building 300, Suite 3401  
Tewksbury, MA 01876  
t 800.492.1110  
t 978.442.2200  
f 978.442.2476

[www.corning.com/lifesciences](http://www.corning.com/lifesciences)

#### ASIA/PACIFIC

**Australia/New Zealand**  
t 61 427286832

**China**  
t 86 21 3338 4338  
f 86 21 3338 4300

**India**  
t 91 124 4604000  
f 91 124 4604099

#### Japan

t 81 3-3586 1996  
f 81 3-3586 1291

**Korea**  
t 82 2-796-9500  
f 82 2-796-9300

**Singapore**  
t 65 6572-9740  
f 65 6735-2913

**Taiwan**  
t 886 2-2716-0338  
f 886 2-2516-7500

#### EUROPE

CSEurope@corning.com

**France**  
t 0800 916 882  
f 0800 918 636

**Germany**  
t 0800 101 1153  
f 0800 101 2427

**The Netherlands**  
t 020 655 79 28  
f 020 659 76 73

**United Kingdom**  
t 0800 376 8660  
f 0800 279 1117

#### All Other European Countries

t +31 (0) 206 59 60 51  
f +31 (0) 206 59 76 73

#### LATIN AMERICA

grupoLA@corning.com

**Brasil**  
t 55 (11) 3089-7400

**Mexico**  
t (52-81) 8158-8400