

SUMMER 2018

SAMOA

TENDANCES

*SAMOA FOREVER
FOREVER SAMOA*

Your New Blush Heroes,
Sizzling Looks, Glamour That Takes
You From Pool To Party

SAMOA

essence OF NATURE

NOURISHING
HAND & NAIL CREAM

CHAMOMILE & SHEA BUTTER BENEFITS
ALOE VERA RESTRUCTURING VIRTUES



Blend with nature and nurture your hands...
The "Essence Of Nature" hand and nail nourishing cream
contains the most **beneficial gifts of nature:**
CHAMOMILE, SHEA BUTTER AND ALOE VERA.
Provides **immediate moisturizing action** and relief,
restores deeply damaged dry hands.

Never Nude summer **NAIL KIT**

2 Nail Polishes
+ 1 **FREE** Hand & Nail
Cream



Essence of Nature
Nourishing
Hand & Nail
Cream
15ml



171
Coconut Cakes



172
Try Me



173
Orchide Me



174
Mad Heat

Your smoothest summer move
Don't let the heat cramp your style.

ESSENCE OF NATURE

is here to give your skin all the moisture it needs
to look and feel amazing.





LOTUS Mascara Travel KIT

MINI size with MAXI power

Don't leave home without them!

Whether you're looking for perfect poolside lashes
or seductive party peepers,
these travel kits are just right for popping in your handbag
or taking with you on your Insta-ready travels.



Black KIT

Mascara Black
Purity H2O
& 4 Cotton bads



Waterproof KIT

Mascara Waterproof
Purity 2 Phases
& 4 Cotton bads



INTERGALACTIC

*Moon-kissed temples on a rosy-cheek flush?
Or perhaps a dreamy sun-kissed bronze?*



BLUSH & GLOW is your new essential palette for the travel mood of the day...

But first, set the tone and tantalize your way with the new **AMORE MIO metallic** nail polish tones in **Fiction** and **Sci-fi**.

Blush & Glow Palette, Highlighter, Blush & Bronzer 2 Life in pink
Amore Mio100 Fiction
Ooh la lips! Matt liquid lipstick 509.

Looking for cheekbones
to die for?

Blush & GLOW

The new **BLUSH & GLOW** palette's got you covered with three essential products all in one place.

- **BRONZER** for that sunkissed glow.
- **BLUSH** for warmth and definition.
- **HIGHLIGHTER** for a touch of natural radiance. Perfect for daytime.

3, 2, 1... ready, set, GLOW!



2 Life in Pink



1 Life's Peach

BRONZER



BRONZE & SCULPT

This look is ideal for round or square shaped faces as it helps to give the illusion of length. Position your brush at your ear's midway point and apply from the hairline toward the mouth.

HIGHLIGHTER



Make your CHEEKBONES STAND OUT

This look suits all face shapes. Position your brush on the upper part of your cheekbones and apply from the center sweeping up toward your temples.



2 WAYS TO BRUSH YOUR BLUSH



GO CLASSIC

This look is your go-to for any occasion and suits all face shapes. Position your brush at your hairline on your cheekbone and apply toward the center.



HEALTHY GLOW

This look is great for long faces as it gives the illusion of wideness. Position your brush on the apple of your cheek and blend in circular motions.



REVIVE DUO BLUSH

GOOD THINGS **COME IN TWOS...**!

The new **REVIVE** duo blush gives you two colors to blend for a natural pop of fresh colors.

1 Rose Pop



2 Sun Fusion



3 Fresh Hint







COLOR GOES POP

Go magnetic
with this
electrifying
combination
of blue and green
for eyes.



You Broke My Heart eyeshadow 1 Fjord, Pure Kiss Silky eyeshadow 605, Bésame eyeliner 58
Magalash mascara, Revive blush 1 Rose Pop, Keep kissing lipstick 71, Amore Mio 96 Suzanna.



BRILLIANT HUES

Fuse with nature's bold and beautiful hues, and keep the spotlight on your eyes with gorgeous shades and flirty lashes...



You Broke My Heart eyeshadow 17 Blueberry, Oriental khol kajal 806 Turquoise, Megalash mascara, Revive blush 3 Fresh Hint, Keep kissing lipstick 66.



Discover 4 more reasons to **LOVE Ooh la lips!**



MATT LIQUID LIPSTICK SUPER LONGWEAR

- It's easy to apply and takes only 2-3 mins to dry.
- Only one coat gives you total coverage.
- 6+ hours of super comfortable wear.
- The result is vivid, MATT and voluptuous.



SAMOA

Ooh la lash!
maximeyes mascara
CARBON BLACK LOOK





Revive blush 3 Fresh Hint
Ooh La Lips! Matt Liquid Lipstick 506.

NAUGHTY BUT NICE

INNOCENT OR GUILTY?

It's up to you to decide with this **seductive** look that plays with **gorgeous** earthy tones of chocolate, bronze and gold.



You Broke My Heart eyeshadow
5 Flamboyant
Bésame eyeliner 57
Pure Kiss Silky eyeshadow 607
Ooh La Lash! mascara.



How did she get that *PEACHY LOOK?*

Here's how to take it home

Mattifying bronzer
Keep Kissing lipstick 71
Bésame khol kajal 62 & eyeliner 57
Clin d'œil eyeshadow 19 Reflets
Capteur Lumière
corrector concealer
1 Secret
Skin Shield, SPF30
protective foundation
Essential.





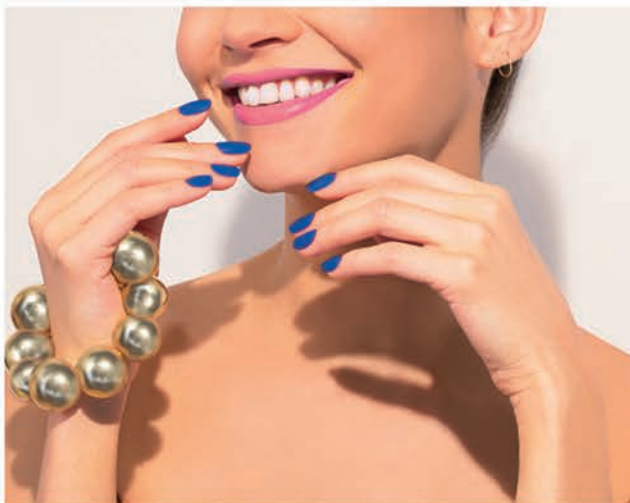
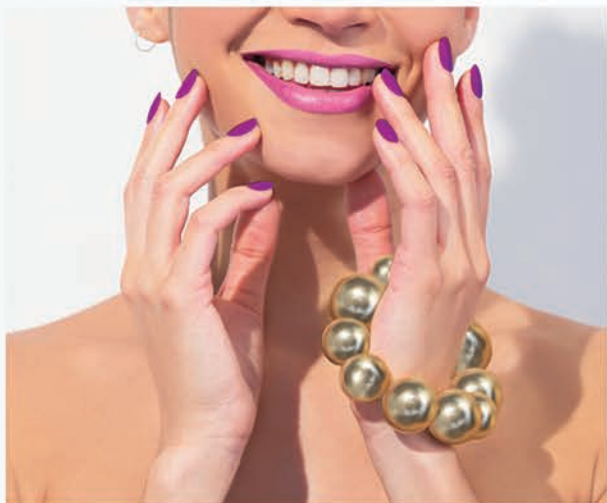
What's your COLOR CRUSH?

Don't miss out
on the hottest love affair
this summer.

These all new shades
take you through
every emotion
from sizzling passion
to icy cool,
and guarantee you
a look to **fall in love** with
over and over again.







WILD & WONDERFUL

Let your mood take full reign on your nails and express yourself with shades that grab the limelight.

It's time to dream in color, with **Madness**, **Utopia** and **Paradise Beach** all waiting to rock your world.



Lotus Super Longwear Lipliner 950
Ooh La Lips! Matt Liquid Lipstick 508



97
Madness



98
Utopia



99
Paradise Beach