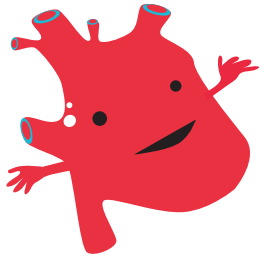
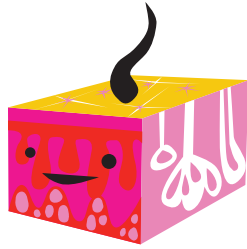


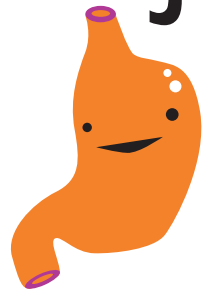
# guts in japanese!



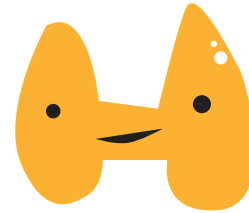
**heart**  
しんぞう  
shinzou



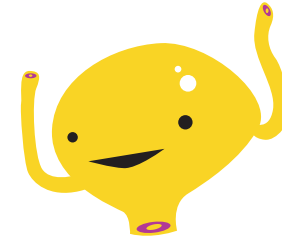
**skin**  
はだ  
hada



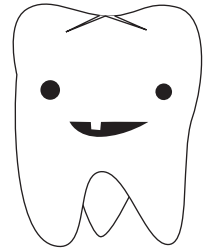
**stomach**  
いぶくろ  
ibukuro



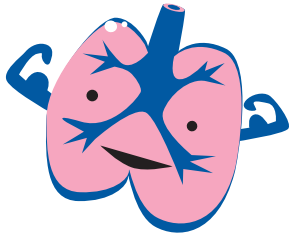
**thyroid**  
こうじょうせん  
koujousen



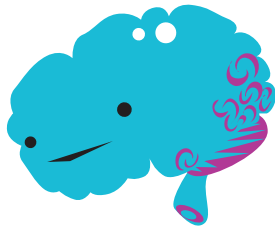
**bladder**  
ぼうこう  
boukou



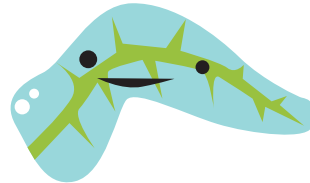
**tooth**  
は  
ha



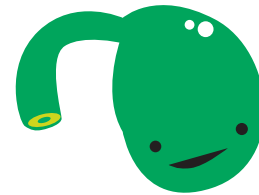
**lung**  
はい  
hai



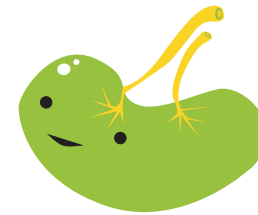
**brain**  
のう  
nou



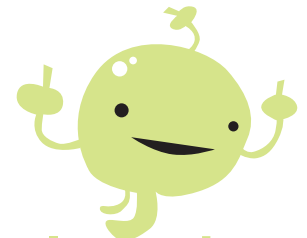
**pancreas**  
すいぞう  
suizou



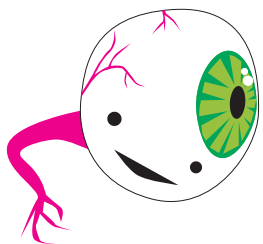
**pineal**  
しょうかせん  
shoukasen



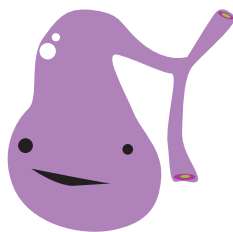
**spleen**  
ひぞう  
hizou



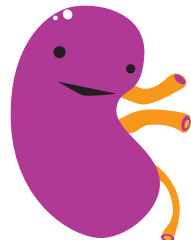
**lymph node**  
りんぱせつ  
rinpasetsu



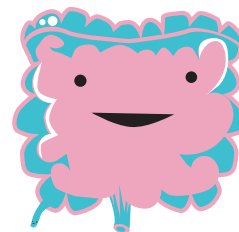
**eyeball**  
がんきゅう  
gankyuu



**gall bladder**  
たんのう  
tannou



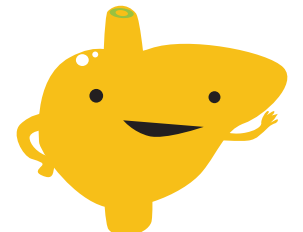
**kidney**  
じんぞう  
jinzou



**intestine**  
だいちょう  
daichou



**appendix**  
もうちょう  
mouchou



**liver**  
かんぞう  
kanzou