

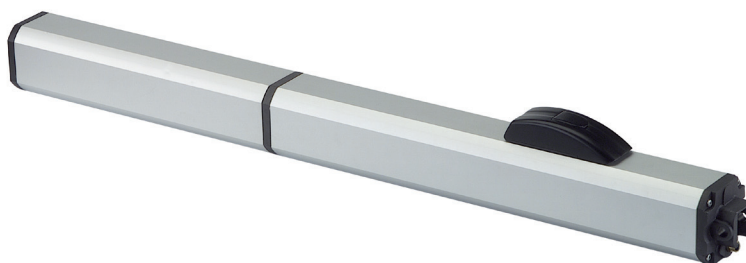
Hydraulic Swing Gate Operator

maximum leaf width

12-20 ft

maximum leaf weight

900-2000 lb



- Wide and versatile range from residential to heavy industrial gates
- Hydraulic lock of the gate in open and/or closed positions
- Quiet operation
- Self lubricating for long life
- Key protected manual release
- Compliant with UL325 for Class I,II,III, and IV applications

TECHNICAL SPECIFICATIONS

| Model | 400 CBC | 400 CBAC | 400 SB | 400 SBS | 400 CBACR | 400 CBAC EG | 400 SB EG |
|---|--|-----------------------|-----------------------|-----------------------|-----------------------|---------------------------------------|-----------------------|
| Input voltage | 115 VAC (+10% -6%) or 230 VAC (+6% -10%) | | | | | | |
| Power | 220 W | | | | | | |
| Current | 2A (115V) - 1 A (230V) | | | | | | |
| Motor | Asynchronous single phase | | | | | | |
| Thrust capacitor | 25uF (115V) - 8uF (230V) | | | | | | |
| Operating ambient temperature | 4°F - 131°F (-20 °C to +55 °C) | | | | | | |
| Thermal protection on motor | 248 °F (120 °C) | | | | | | |
| Weight | 19 lb (8.6 kg) | | | 22 lb (10 kg) | | | |
| Protection class | IP 55 | | | | | | |
| Dimensions (L x D x H) | 40.5 x 4.4 x 3.3 in (1,031x113x85 mm) | | | | | 50.6 x 4.4 x 3.3 in (1,285x113x85 mm) | |
| Hydraulic Locking (1) = Closing (2) = Opening and Closing | (1) | (2) | None | None | (2) | (2) | None |
| Minimum Leaf Length | 9.5 ft (2.9m) | 9.5 ft (2.9m) | 9.5 ft (2.9m) | 12.5 ft (3.8m) | 9.5 ft (2.9m) | 11.5 ft (3.5m) | 11.5 ft (3.5m) |
| Maximum Leaf Length | 16 ft (4.9 m) | 16 ft (4.9 m) | 18 ft (5.5 m) | 20 ft (6.1 m) | 12 ft (3.6 m) | 18 ft (5.5 m) | 20 ft (6.1 m) |
| Maximum Leaf Weight | 1300 lb (589 Kg) | 1300 lb (589 Kg) | 1600 lb (726 Kg) | 2000 lb (907 Kg) | 900 lb (408 Kg) | 1500 lb (680 Kg) | 1800 lb (816 Kg) |
| Thrust force | 1390 lbf (620 daN) | 1390 lbf (620 daN) | 1390 lbf (620 daN) | 1740 lbf (775 daN) | 1045 lbf (465 daN) | 1045 lbf (465 daN) | 1045 lbf (465 daN) |
| Pump flow rate | 1 l/m | 1 l/m | 1 l/m | 0.75 l/m | 1.5 l/m | 1.5 l/m | 1.5 l/m |
| 90° opening time | approx. 18 sec | approx. 18 sec | approx. 18 sec | approx. 24 sec | approx. 12 sec | approx. 18 sec | approx. 18 sec |
| Effective rod stroke | 10.25 in (260mm) | 10.25 in (260mm) | 10.25 in (260mm) | 10.25 in (260mm) | 10.25 in (260mm) | 15 in (380mm) | 15 in (380mm) |
| Use Frequency (cycles per hour) | 70 | 70 | 70 | 60 | 80 | 50 | 50 |

NOTE

- Mounting dimensions, wind factor and gate design will affect performance specification
- Use frequency is measured at an ambient temperature of 72 °F (20 °C) . Temperature variation will affect it
- An electric or magnetic lock is recommended for any gate longer than 12 ft (3.6 m)
- Positive gate stops, which limit gate travel, are required in the opened and closed positions

400

| Model | Shipping Wt (approx) | Voltage | Oil Type | Part No. |
|-------------------------------------|----------------------|---------|----------|--------------|
| 400 CBAC Standard Basic Single Kit | 54 lb (24.5 Kg) | 115V | Regular | 10420112.5 |
| | | | Arctic | 1042011277.5 |
| | | 230V | Regular | 1042011.5 |
| | | | Arctic | 1042011677.5 |
| 400 CBACR Rapid Basic Single Kit | 54 lb (24.5 Kg) | 115V | Regular | 10420712.5 |
| | | | Arctic | 1042071277.5 |
| | | 230V | Regular | 1042071.5 |
| | | | Arctic | 104207177.5 |
| 400 CBAC EG (long) Basic Single Kit | 54 lb (24.5 Kg) | 115V | Regular | 10420212.5 |
| | | | Arctic | 1042021277.5 |
| | | 230V | Regular | 1042021.5 |
| | | | Arctic | 104202177.5 |

The package 400 - Basic Single Kit 115V contains:

| Qty | Description | Part Number |
|-----|---|-------------|
| 1 | Operator 400 CBAC | Various |
| 1 | Prewired fiberglass enclosure 115V 14x16 in | 3300 |
| 1 | 455D control panel 115V | 790919 |
| 1 | Receiver 433 RC Plug In | 787741 |
| 2 | 4-channel transmitter XT4 433 RC | 787453 |
| 1 | Pair of XP 30 photobeam photocells | 785105 |
| 2 | XP 30 adapters for conduit connection | 401064 |

The package 400 - Basic Single Kit 230V contains:

| Qty | Description | Part Number |
|-----|---|-------------|
| 1 | Operator 400 CBAC | Various |
| 1 | Prewired fiberglass enclosure 230V 14x16 in | 3303 |
| 1 | 455D control panel 230V | 790926 |
| 1 | Receiver 433 RC Plug In | 787741 |
| 2 | 4-channel transmitter XT4 433 RC | 787453 |
| 1 | Pair of XP 30 photobeam photocells | 785105 |
| 2 | XP 30 adapters for conduit connection | 401064 |

To make the above kit a master/slave (bi-parting) system add one of the following:

| Model | Shipping Wt | Voltage | Oil Type | Part No. |
|----------------------------------|--------------------|---------|----------|------------|
| 400 CBAC Standard Operator only | 29 lb (13.2 Kg) | 115V | Regular | 104201125 |
| | | | Arctic | 1042011577 |
| | | 230V | Regular | 1042011 |
| | | | Arctic | 1042011677 |
| 400 CBACR Rapid Operator only | 29 lb (13.2 Kg) | 115V | Regular | 10420712 |
| | | | Arctic | 1042071277 |
| | | 230V | Regular | 1042071 |
| | | | Arctic | 104207177 |
| 400 CBAC EG (long) Operator only | 29 lb (13.2 Kg) | 115V | Regular | 104202125 |
| | | | Arctic | 1042021277 |
| | | 230V | Regular | 1042021 |
| | | | Arctic | 104202177 |

455D 115VAC / 230VAC Control Board

- Operates a single leaf or bi-parting gate
- Programmable opening and closing slow down
- 8 different function logics
- Built in closing timer
- Fail safe function for photocells
- Opening and closing delays selectable for overlapping gates
- Electrical thrust force adjustable

TECHNICAL SPECIFICATIONS

| | |
|--------------------------------|--|
| Input voltage | 115 VAC (+10% -6%) or 230 VAC (+6% -10%) |
| Input power | 10 W |
| Motor max. load | 800 W |
| Accessory max. load | 500 mA |
| Electric lock max load | 15 VA |
| Operating Temperature | -4°F - 131°F (-20°C - +55°C) |
| Dimensions overall (L x D x H) | 17.5 x 15.5 x 6.2" (445x393x157mm) |
| Weight (without batteries) | 15.5 Lbs (7 kg) |
| Protection class | NEMA type 3, 3R, 4, 4X, 12 and 13 |
| Number of operating logics | 8 |
| Protection Fuses | 2 |