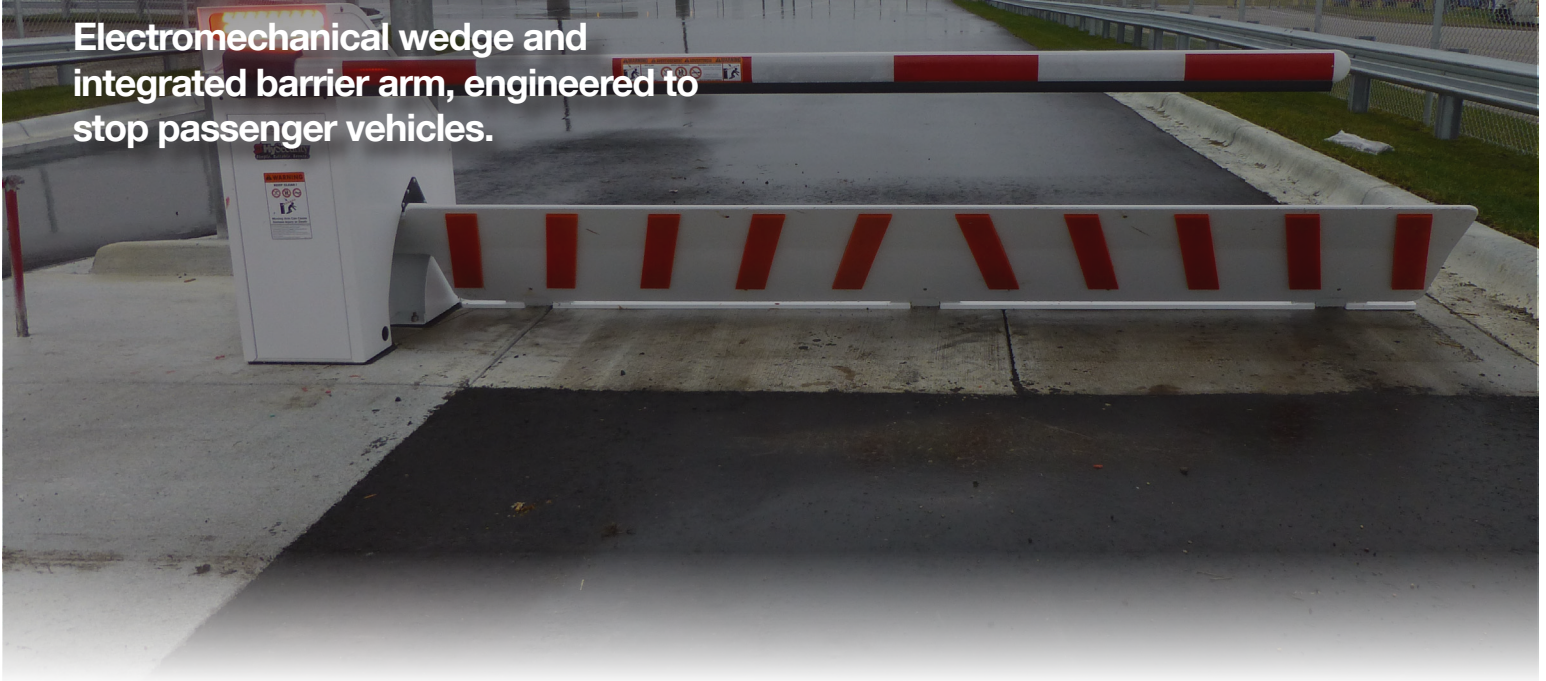


WedgeSmart™ DC

Security plus traffic control in one

Electromechanical wedge and integrated barrier arm, engineered to stop passenger vehicles.



Features:



Arm size:

Configurations to support lane widths of 9, 10, 12, or 14 ft



Reliable:

Operate for up to 150 cycles after AC power loss with optional UPS backup*



Installation:

Surface mount– Easy, quick installation



Programmable:

Customized, configurable settings for site specific requirements



Visible:

Integrated lighting for safety



Safety:

Breakaway, stop motion arm protects people and property in case of vehicle strike



Efficient:

Independently operated barrier arm for high traffic periods



Made in USA:

Designed, tested and built with global materials



Options:

Straight or articulated arm

WedgeSmart DC

Parking and Vehicle Theft Protection



powered by
SmartDC

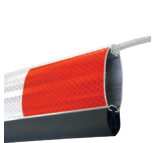
Technical Specifications

Model	WedgeSmart DC
Crash-Engineered*	ASTM F2656 SC40: Small Car, 2,430 lb @ 40 mph (1.1 MT @ 64 km/h) ASTM F2656 FS30: Full Size Sedan, 4,630 lb @ 30 mph (2.1 MT @ 48 km/h)
Lane Widths	9, 10, 12, 14 ft (2.7, 3, 3.7, 4.3 m)
Open/Close Time	5 seconds up / 5 seconds down
Arm Full Open Angle	Arm full open angle: Adjustable 90° ± 10°
Wedge Design	45° raised position; 21 inch plate height for 9, 10 ft lane width; 18 inch plate height for 12, 14 ft lane width; manual locking mechanism and rotary crank for manual operation
Handing	Left or right handing available
Arm Design	Aluminum arm with bumper, lights, HyProtect™ breakaway arm bracket & kill switch, 9, 10 ft (2.7, 3 m) Articulating aluminum arm with bumper, HyProtect™ breakaway arm bracket & kill switch; 7 ft clear/8 ft extended (2.1 m/2.4 m) 8 ft clear/10 ft extended (2.4 m/3 m) 9 ft clear/10 ft extended (2.7 m/3 m) Lights optional.
Duty Cycle	Continuous
UPS Battery Backup Cycles**	Two 12V, 50Ah batteries. Operates for over 150 cycles after AC power loss. Field configurable to fail open or secure when batteries deplete.
Operating Voltage	24VDC
Input Voltage	115VAC, 3A, 60/50 Hz, 208-230VAC, 1.5A, 60/50Hz
Accessory Power	12VDC and 24VDC 1A each
Temperature Rating	-13° to 158° F (-25° to 70° C)
Communication	USB, RS-232, RS-485, Ethernet & fiber option using HyNet™ Gateway accessory
User Controls	Smart DC Controller with 70+ configurable settings, 32 character LCD display and 5 tact buttons or a PC using S.T.A.R.T. software.
Relays	Two configurable user relays: 30VDC, 3A solid state and 250VAC, 10A electromechanical. Optional Hy8Relay™ for 8 additional relay outputs
Finish	Zinc plated with white powder coating
Foundation	To achieve ASTM F2656 rating, 3000 psi flat concrete required. 10 inch min. at anchor strap area. 6 inch min. all other areas. Area under chassis and wedge plate must be flat within 1/4 inch over entire length.
Electrical Certification	Control panel certified to UL 508A by ETL
Warranty	2 years w/product registration

* Engineered - No crash testing performed; speed rating assigned per technical specifications; penetration rating undetermined

** The actual number of arm/wedge cycles available from battery depends on arm length/weight, wedge plate weight, battery size, state of charge and health, ambient temperature, accessory power draw and frequency of arm/wedge cycles during power outage.

Optional Accessories - See website for complete list



Oval Aluminum Arm



Articulating Arm



Battery Mount Kit - Rear of Chassis



Hy5B™ Vehicle Detector



Hy8Relay™ Module



HyNet™ Gateway Integration



Photo Eye Kits



Contact HySecurity for an operator/parts distributor near you.
phone 253-867-3700 | 800-321-9947
hysecurity.com | sales@hysecurity.com

D0627 121820