

Thank you for purchasing this Snow Peak product. Although this product is expected to be complete, if you notice anything amiss please consult the store where you purchased this product or contact our User Service department.

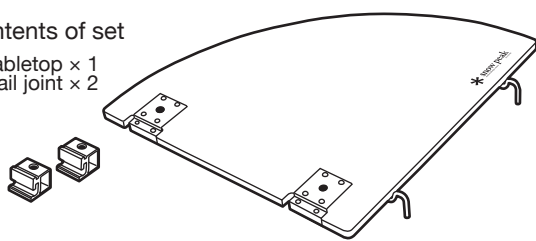
\*Legs are not included. A separately sold leg set (CK-109/112/113/114) is required.

This product is designed for use with the Iron Grill Table, a device that allows you to cook authentically outdoors with your choice of heat source: charcoal, gasoline, gas, etc. Although sufficient consideration has been given to safety, improper use could lead to the table tipping over, fire, burns, or other accident. Thoroughly read this instruction manual before use

### Contents of Set and Quality Labeling

#### • Contents of set

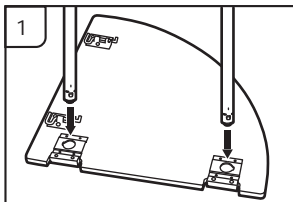
Tabletop × 1  
Rail joint × 2



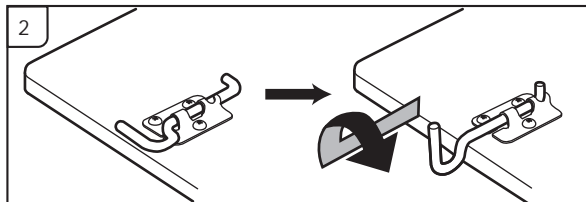
#### • Quality labeling

Size: 496 × 496 × 25mm  
Materials: Bamboo laminate  
15mm thick, aluminum,  
stainless steel  
Weight: 2.4kg  
The illustration shows the  
CK-118T.

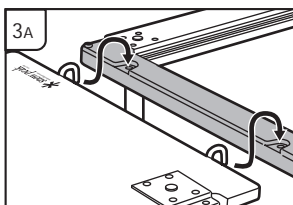
### Method of Use



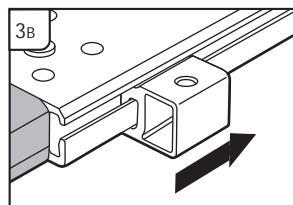
1 Turn the tabletop upside down, and secure the legs to it.



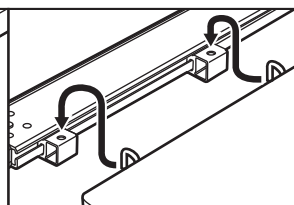
2 Pull out the hooks and rotate them.



3A Connect to the side (short side) of the Iron Grill Table.



3B Insert the rail joints into the rail (long side) on the Iron Grill Table.

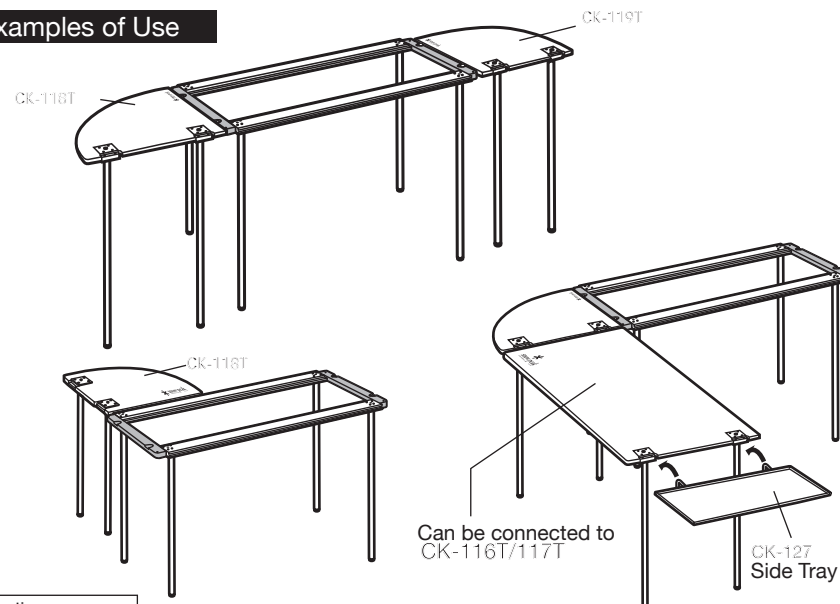


Connect the tabletop hooks.

### Handling Precautions

- Thoroughly read the instruction manual for the Iron Grill Table before use.
- Do not apply excessive force to the connecting hardware and hooks. They may become damaged.
- The connecting hardware and hooks are not completely secure. Inspect the connectors and legs for looseness during use, and confirm that everything is set up properly. Using with loose connectors or legs could cause them to come undone, resulting in the product falling, tipping over, fire, or burns.
- Do not apply horizontal force to the legs. This will cause the legs to bend or break.
- Use this product on firm, flat ground. Do not continue use in unstable usage conditions.
- Do not move with items connected together. This will apply excessive force to the connections and damage them. Separate everything before moving.
- The tabletop may become warped, distorted, or cracked depending on its usage conditions and storage conditions. Do not store or use in areas where a heater applies direct heat, areas with direct sunlight for long periods of time, or in a vehicle in the summertime.
- Leaving this product in the rain or in contact with water for an extended period of time will cause the water to permeate its coating, resulting in staining, discoloration, warping, and/or distortion.
- Do not scrub with hard or sharp objects, as they will scratch the surface.
- Do not place more than 30kg on the tabletop, and ensure that the load is distributed evenly on the surface. Otherwise, the unit could tip over or become damaged.
- This product is not meant for permanent use. Leaving heavy objects on the tabletop permanently could result in warping.
- Hitting the tabletop could damage its coating or make it easier for moisture to get inside, resulting in staining, discoloration, warping, and/or distortion.
- The tabletop may become discolored with use. Localized temperature increases may also encourage discoloration.
- This product is made of processed and laminated bamboo. Each one will vary in terms of color density and texture. Please enjoy its natural colors and textures.
- Do not attempt to modify this product. Doing so may impair its functionality or decrease its strength. Modification will result in the product no longer being eligible for after-sales services.

### Examples of Use



For question or concerns contact the Snow Peak Customer Service Department.  
**Snow Peak USA Branch**  
Tel. +1 503-697-3330 (9:00-17:00)  
Email: info@snowpeak.com

**Snow Peak Inc. A Corporation of Japan**  
410 NW 14th Ave., Portland Oregon, 97209, USA  
Tel. +1 503-697-3330 Fax. +1 503-699-1396  
www.snowpeak.com

**Snow Peak, Inc.**  
456, Nakanohara, Sanjo-shi Niigata 955-0147 Japan  
Tel. +81 256-46-5858 Fax. +81 256-46-5860  
www.snowpeak.co.jp

MADE IN CHINA