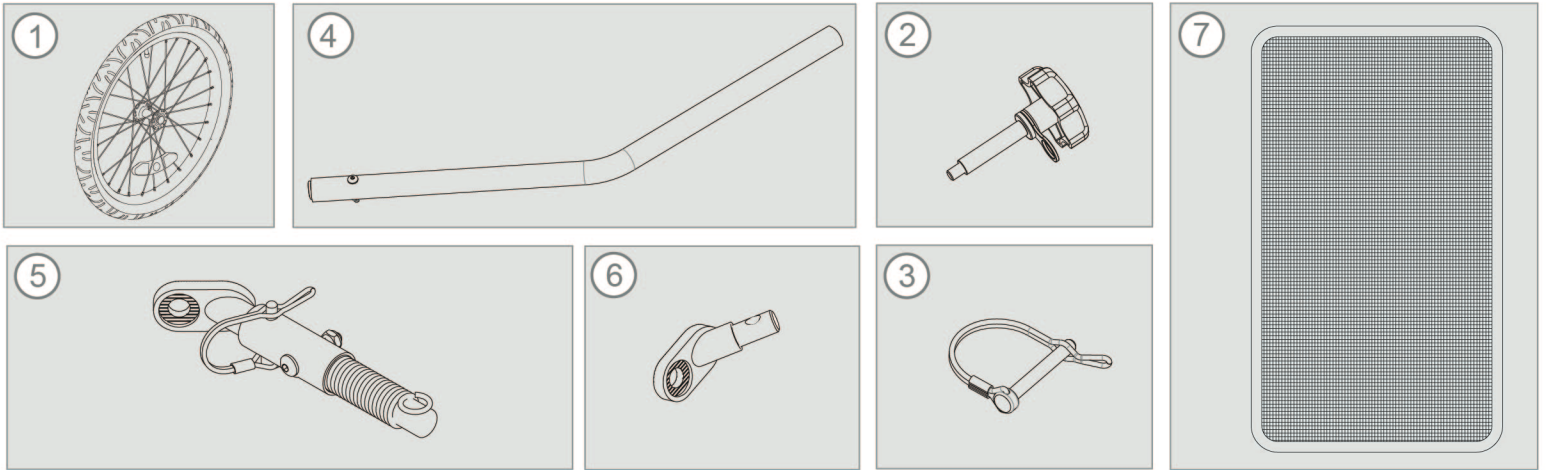


Pet Trailer Replacement Parts



Spare Parts: List

Number Numéro	Description	SKU
1	Rear wheel	30300000
2	Tow arm fix screw	30300001
3	Quick release Pin 50 MM	30300002
4	Tow arm assembly	30300003
5	Hitch assembly	30300004
6	Hitch connector	30300005
7	Replacement front window screen	30300006

everyday

everyday bicycles.com

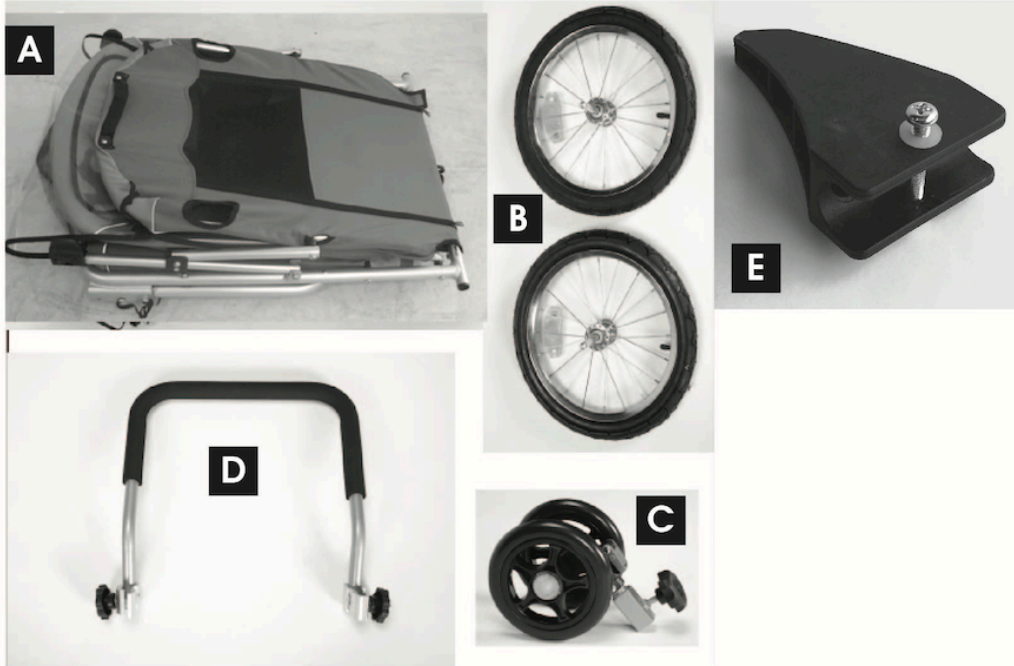


Owners Instructions and Safety Manual Everyday Pet Trailer

PET
TAIL'R
everyday



Assembling your Everyday Pet Trailer:

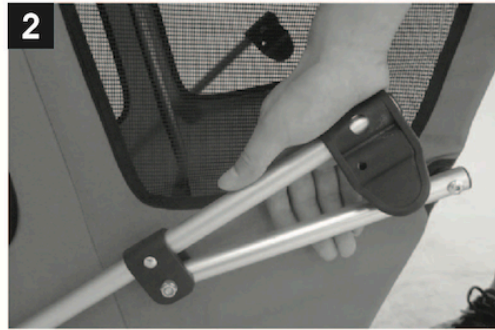


Remove all components from the box.

- (A) Stroller Body 1
- (B) Back Wheel 2
- (C) Front Wheel 1
- (D) Handle 1
- (E) Wheel Guard 2



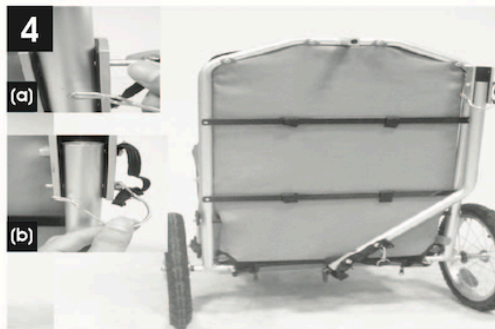
1
Lift both side bars to an upright position.
Please Note: The above steps must be completed within the canvas covering.



2
When two side frame tubes are parallel lock each side in place with the swivel clamps



3
Attach the larger back wheels into the frame of the stroller by pushing the wheel in until it clicks. To remove the wheels, lift the back of the trailer up and push the buttons located on the axle. Pull out the wheels.

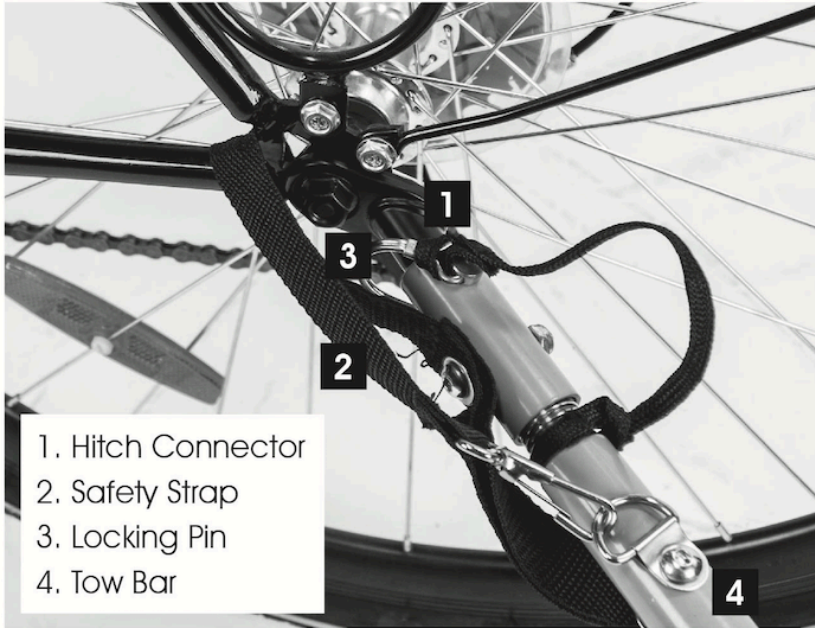


4
Lift the stroller up and remove the hitch arm-locking pin from the back hole in the hitch arm bracket. Fold the hitch arm out until it is parallel with the base frame (a). Lock the hitch arm into place by reinserting the safety pin through the front hole of the hitch arm bracket and secure with the wrap spring clip (b).



5
Attach wheel guards to each side of frame base using bolts and locknuts provided.

Attaching Pet Stroller to bicycle:



1. Hitch Connector
2. Safety Strap
3. Locking Pin
4. Tow Bar

To attach the trailer to your bicycle, you will need to remove the left side axle nut or quick release nut from your rear wheel. Install the Hitch Connector between the quick release or nut and your bicycle frame dropout (1). Tighten the quick release or axle nut according to the manufacturers recommended torque setting. Insert the Flex Connector onto the Hitch Connector. Insert the Locking Pin through the holes in both the Flex Connector and the Hitch Connector (2), and lock the pin by clipping the safety clasp over and onto the pin (3). Wrap the Safety Strap around the lower rear frame stay of the bike, and latch to the D-ring on the Tow Bar (4).

To remove the trailer from your bike, simply release the Safety Strap from the D-ring, open the Locking Pin, and slide it out from the end of the Tow Bar. The Hitch Connector can remain on your bicycle when the trailer is not in use.

To purchase additional Hitch Connectors for other bicycles that may use this trailer, visit www.everydaybicycles.com.



To use as a stroller:



Lift the stroller up and remove the hitch arm-locking pin from the back hole in the hitch arm bracket. Fold the hitch arm in and lock by reinserting the safety pin. Secure with the wrap spring clip (a). Attach the front stroller wheels by inserting the tube on the stroller into the tube on the wheel base.



Rotate the twist knob on the wheel base clockwise to fasten. To lock the stroller wheel in place, flip the red lever up. To allow the stroller wheel to swivel, flip the red lever down.



Attach the stroller handle by lining it up with the exposed metal on each side of the stroller frame and secure using the twist knobs on the handle. Turn knobs clockwise to secure.



Parts and accessories available at

everydaybicycles.com

facebook.com/everydaybicycles

twitter.com/everydaybicycle

Customer Service

service@everydaybicycles.com

855-249-1471 (Toll-Free)

416-479-0841 (Fax)

Everyday Bicycles

40 Anderson Blvd, Unit 3

Uxbridge ON L9P 0C7

Safety Warnings and Safe Usage Instructions

Service and Repair of Your Trailer

Service and repair can be performed by any bike shop. For any assembly questions or for replacement parts, **PLEASE DO NOT RETURN TO THE STORE!** Call Everyday Bicycles Customer Service at 855-249-1471, or email us at service@everydaybicycles.com. For cycling and trailering accessories, please visit us at www.everydaybicycles.com.

General Maintenance

From time to time, check your trailer for loose hardware, worn parts, torn material or stitching.

Repair or replace parts as needed. Over or under inflation of tires may cause handling issues for the trailer. Replace tires only with street tread tires.

We suggest you periodically clean all parts, wipe dry and then let air dry, especially if exposed to salt water, salt spray, beach sand etc.

WARNING! Do not make any modifications to the trailer. Be sure that the trailer and bike are in good working condition. A bike dealer can help you with inspection and maintenance. Do not use cleaning solvents. Clean only with mild soap and water.

Seasonal Storage of Your Trailer

Inspect the trailer and its parts before and after each use and storage. Check the working conditions of both trailer and bike before each use.

Store trailer in a dry area and always make sure trailer is dry before storing.

WARNING! To prevent color fading and eventual weakening of the fabrics or components, store the trailer out of direct sunlight.

WARNINGS!

Please read the warnings carefully. Failure to follow these warnings and assembly instructions could result in serious injury or death.

- Ensure that the load does not exceed 100lbs (45kg).
- Ensure that the weight of the tow bar at the Hitch Connector is greater than 2lbs (1kg) but does not exceed 20lbs (9kg) with a fully loaded trailer.
- Check that your cargo is securely loaded, and that weight is distributed evenly in the trailer.
- Do NOT carry children in this trailer.
- Ride slower than you would if you were riding without the trailer.
- You will require extra stopping distance. Use your brakes early. Take corners very gradually.
- Do not exceed a speed over 25 kph (15 mph) and reduce speed significantly when turning.

- Use on smooth roads only. Do not ride over curbs, potholes or off-road.
- Do not install a car seat or any other seating device to this trailer.
- Do not make any modifications to the trailer.
- Install a rear view mirror on your bike to observe the trailer while riding.
- Never allow children to assemble, fold, or disassemble this trailer.
- Periodically re-check all fasteners to make sure they are tight.

Pre-Ride Safety Check

Before every ride the following safety check should be performed.

- Check to ensure hitch connector is tight.
- Check to ensure hitch safety strap is secure.
- Check TIRE AIR PRESSURE. Always maintain 20in wheels between 40 PSI and 65 PSI (2.7 BAR and 4.4 BAR) and 12in wheels between 30 PSI and 50 PSI (2.1 BAR and 3.5 BAR) or as indicated on tire sidewall.

General Safety Guidelines

- Attach the hitch connector securely to the bicycle frame. The connector should be tightened and the safety strap wrapped around the stay or frame and the hook snapped into the D-ring.
- Do not overload the trailer. The load limit is 100lb (45kg).
- Use extra caution when turning on uneven pavement, and going downhill.
- This trailer is wide. Allow extra clearance near curbs, signs, parked cars, and other obstacles! A bicycle with trailer attached requires a wide turning radius.
- Do not turn sharply!
- Do not ride over curbs. Avoid bumps and holes. Always signal your turns.
- Never assume you will be given the right of way.
- Do not try to predict the actions of car drivers.
- Do not travel on the highways, busy streets or in areas unsafe for bicycling.
- Do not use trailer in snow or icy conditions.
- Do not travel or descend at high speeds.

IMPORTANT: The tow-bar must not bear any extra load.

Do not attempt to install seating systems in the trailer. It is not designed for car seats, stroller seats, infant beds, or any other type of seating. Use of any seating system will void the warranty, and may result in damage to the trailer or injury of the passengers.

Pulling this trailer affects the operation of the bicycle. Stopping, starting and turning are affected, depending on the weight of the cargo. To familiarize yourself with the changes, load the trailer to capacity and practice in a safe area. Do not use your trailer until you have become accustomed to how it affects your bicycle handling.

SUFFOCATION WARNING: Plastic bags can be dangerous. To avoid danger of suffocation, keep plastic bags away from babies and children.

everyday