

**Lightweight & robust, 63ltr Sump Capacity and 205kg Load**

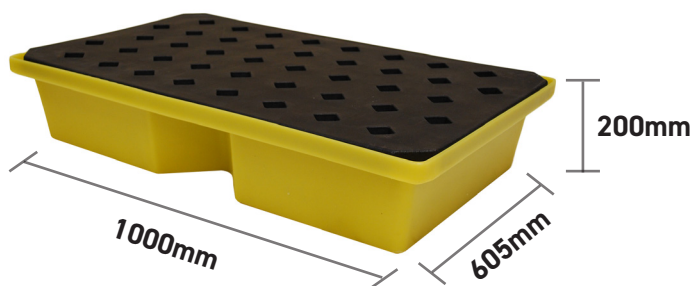
## DESCRIPTION

- Manufactured from medium density polyethylene
- Sump capacity of 63ltr
- 1 x removable plastic grid included
- Broad range chemical compatibility
- Lightweight & robust drip tray
- Ideal for good housekeeping of small containers
- Manufactured in the UK








## SPECIFICATIONS

CODE	ST60
HEIGHT	200mm
LENGTH	1000mm
WIDTH	605mm
SUMP CAPACITY	63ltr
COLOUR	Yellow
TARE WEIGHT	9.5kg
UDL	205kg



## FEATURES AND BENEFITS



-  100% polyethylene for chemical compatibility
-  Removable plastic grid for easy clean-up
-  Lightweight & robust
-  Ideal for good housekeeping of small containers
-  UV stabilised



## OTHER MODELS AVAILABLE

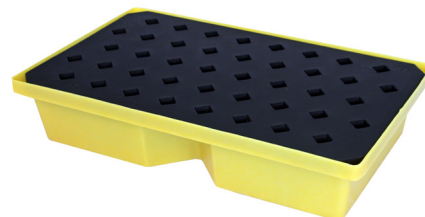
ST20



ST30



ST40



ST66



ST66WH



ST66BASE



**OTHER MODELS AVAILABLE**

ST70

ST70BASE

ST100



**FULL ST RANGE**

CODE	SUMP	LENGTH	WIDTH	HEIGHT	WEIGHT
ST20	22ltr	595mm	395mm	175mm	4kg
ST20BASE	22ltr	595mm	395mm	175mm	2.5kg
ST30	31ltr	805mm	405mm	170mm	4.75kg
ST30BASE	31ltr	805mm	405mm	170mm	2.75kg
ST40	43ltr	800mm	605mm	170mm	7kg
ST40BASE	43ltr	800mm	605mm	170mm	4kg
ST60	63ltr	1000mm	605mm	200mm	9.5kg
ST60BASE	63ltr	1000mm	605mm	200mm	5kg
ST66	66ltr	804mm	608mm	220mm	7kg
ST66WH	66ltr	933mm	608mm	938mm	13.5kg
ST66BASE	66ltr	804mm	608mm	220mm	4kg
ST70	70ltr	804mm	608mm	315mm	7.75kg
ST70BASE	70ltr	804mm	608mm	315mm	4.75kg
ST100	104ltr	1195mm	795mm	185mm	8kg
ST100BASE	104ltr	1195mm	795mm	185mm	14kg